

UNITED STATES  
DEPARTMENT OF THE INTERIOR  
BUREAU OF LAND MANAGEMENT

APPLICATION FOR PERMIT TO DRILL, DEEPEN, OR PLUG BACK

1a. Type of Work DRILL	5. Lease Number USA SF-078483-A Unit Reporting Number NM NM-0783272C
1b. Type of Well GAS	6. If Indian, All. or Tribe
2. Operator <b>BURLINGTON</b> RESOURCES Oil & Gas Company	7. Unit Agreement Name Allison Unit
3. Address & Phone No. of Operator PO Box 4289, Farmington, NM 87499 (505) 326-9700	8. Farm or Lease Name
4. Location of Well Unit M (SWSW), 375' FSL, 865' FWL  Latitude 36° 59.4181 Longitude 107° 31.4074	9. Well Number 77
	10. Field, Pool, Wildcat Los Pinos Frt Snd PC, South
	11. Sec., Twn, Rge, Mer. (NMPM) M Sec. 12, T32N, R7W API # 30-045-33659
14. Distance in Miles from Nearest Town	12. County San Juan
	13. State NM
15. Distance from Proposed Location to Nearest Property or Lease Line 375'	
16. Acres in Lease	17. Acres Assigned to Well 175.7 W/2 PC 169.35
18. Distance from Proposed Location to Nearest Well, Drlg, Compl, or Applied for on this Lease 53' - Allison Unit #13	
19. Proposed Depth 3423'	20. Rotary or Cable Tools Rotary
21. Elevations (DF, FT, GR, Etc.) 6591'	22. Approx. Date Work will Start
23. Proposed Casing and Cementing Program See Operations Plan attached	
24. Authorized by: <u>Patsy Clugst</u> Sr. Regulatory Specialist	<u>3/20/06</u> Date

PERMIT NO.

APPROVAL DATE

APPROVED BY

TITLE

DATE

Archaeological Report attached

Threatened and Endangered Species Report attached

NOTE: This format is issued in lieu of U.S. BLM Form 3160-3

Title 18 U.S.C. Section 1001, makes it a crime for any person knowingly and willfully to make to any department or agency of the United States any false, fictitious or fraudulent statements or presentations as to any matter within its jurisdiction.

NMOCDO

DISTRICT I  
1625 N. French Dr., Hobbs, N.M. 88240

DISTRICT II  
811 South First, Artesia, N.M. 88210

DISTRICT III  
1000 Rio Brazos Rd., Aztec, N.M. 87410

DISTRICT IV  
2040 South Pacheco, Santa Fe, NM 87505

State of New Mexico  
Energy, Minerals & Natural Resources Department

Form C-10  
Revised August 15, 200

OIL CONSERVATION DIVISION

2040 South Pacheco  
Santa Fe, NM 87505

Submit to Appropriate District Office  
State Lease - 4 Copies  
Fee Lease - 3 Copies

☐ AMENDED REPORT

WELL LOCATION AND ACREAGE DEDICATION PLAT

'API Number 30-045- 33659	'Pool Code 80690	'Pool Name Los Pinos; Frt Snd PC, South
'Property Code 6784	'Property Name ALLISON UNIT	'Well Number 77
'OGRID No. 14538	'Operator Name BURLINGTON RESOURCES OIL AND GAS COMPANY LP	'Elevation 6591'

10 Surface Location

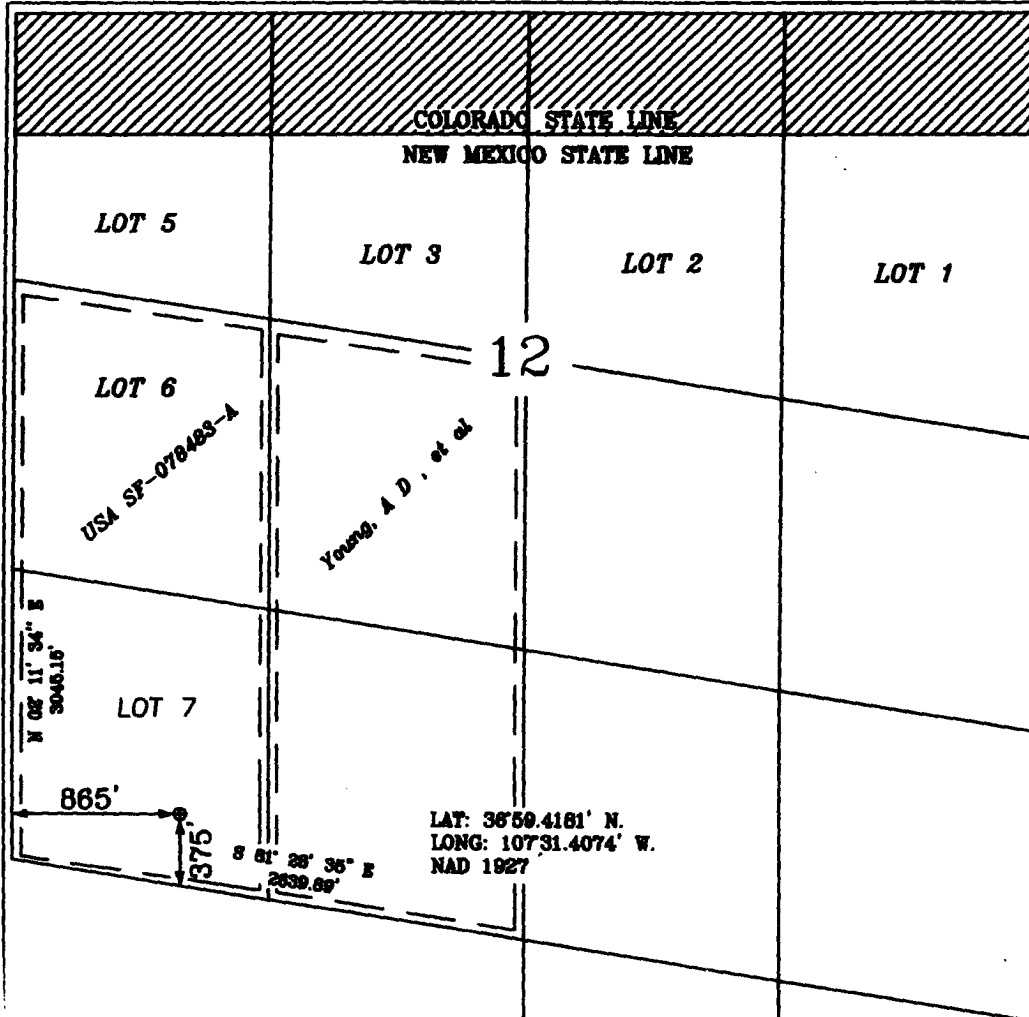
UL or lot no.	Section	Township	Range	Lot Idn	Feet from the	North/South line	Feet from the	East/West line	County
M	12	32-N	7-W	7	375'	SOUTH	865'	WEST	SAN JUAN

11 Bottom Hole Location If Different From Surface

UL or lot no. M	Section	Township	Range	Lot Idn	Feet from the	North/South line	Feet from the	East/West line	County
'Dedicated Acres PC 175.7 ac w2 1169.35					'Joint or Infill		'Consolidation Code		'Order No.

NO ALLOWABLE WILL BE ASSIGNED TO THIS COMPLETION UNTIL ALL INTERESTS HAVE BEEN CONSOLIDATED  
OR A NON-STANDARD UNIT HAS BEEN APPROVED BY THE DIVISION

16



17 OPERATOR CERTIFICATION

I hereby certify that the information contained herein is true and complete to the best of my knowledge and belief.

Signature  
Patsy Clugston  
Printed Name  
Sr. Regulatory Specialist  
Title  
2/14/2006  
Date

18 SURVEYOR CERTIFICATION

I hereby certify that the well location shown on this plat was plotted from field notes of actual surveys made by me or under my supervision, and that the same is true and correct to the best of my belief.

Date of Survey  
Signature  
NEW MEXICO  
15703  
LICENSED PROFESSIONAL SURVEYOR  
Certificate Number  
15703

Office

Energy, Minerals and Natural Resources

May 27, 2004

District I

1625 N. French Dr., Hobbs, NM 88240

District II

1301 W. Grand Ave., Artesia, NM 88210

District III

1000 Rio Brazos Rd., Aztec, NM 87410

District IV

1220 S. St. Francis Dr., Santa Fe, NM 87505

**OIL CONSERVATION DIVISION**

1220 South St. Francis Dr.

Santa Fe, NM 87505

WELL API NO.

30-045- 33659

5. Indicate Type of Lease

STATE ☐FEE ☐

6. State Oil &amp; Gas Lease No.

USA SF-078483-A

7. Lease Name or Unit Agreement Name

Allison Unit

8. Well Number

77

9. OGRID Number

14538

10. Pool name or Wildcat

Los Pinos Frt Snd PC, South

**SUNDRY NOTICES AND REPORTS ON WELLS**  
(DO NOT USE THIS FORM FOR PROPOSALS TO DRILL OR TO DEEPEN OR PLUG BACK TO A DIFFERENT RESERVOIR. USE "APPLICATION FOR PERMIT" (FORM C-101) FOR SUCH PROPOSALS.)

1. Type of Well:

Oil Well ☐Gas Well ☒

Other

2. Name of Operator

BURLINGTON RESOURCES OIL &amp; GAS COMPANY LP

3. Address of Operator

3401 E. 30TH STREET, FARMINGTON, NM 87402

4. Well Location

Unit Letter M : 375' feet from the South line and 865' feet from the West line  
 Section 12 Township 32N Rng 7W NMPM County San Juan

11. Elevation (Show whether DR, RKB, RT, GR, etc.)  
 6591'

Pit or Below-grade Tank Application

☐ or Closure ☐Pit type new drill Depth to Groundwater >100' Distance from nearest fresh water well>1000' Distance from nearest surface water >1000'

Pit Liner Thickness:

n/a

mil

Below-Grade Tank:

Volume

bbls;

Construction Material

## 12. Check Appropriate Box to Indicate Nature of Notice, Report or Other Data

**NOTICE OF INTENTION TO:**PERFORM REMEDIAL WORK ☐PLUG AND ABANDON ☐TEMPORARILY ABANDON ☐CHANGE PLANS ☐PULL OR ALTER CASING ☐MULTIPLE COMPL ☐

OTHER:

New Drill Pit ☒**SUBSEQUENT REPORT OF:**REMEDIAL WORK ☐ALTERING CASING ☐COMMENCE DRILLING OPNS. ☐P AND A ☐CASING/CEMENT JOB ☐OTHER: ☐

13. Describe proposed or completed operations. (Clearly state all pertinent details, and give pertinent dates, including estimated date of starting any proposed work). SEE RULE 1103. For Multiple Completions: Attach wellbore diagram of proposed completion or recompletion.

New Drill, Unlined:

Burlington Resources proposes to construct a new drilling pit and an associated vent/flare pit. Based on Burlington's interpretation of the Ecosphere's risk ranking criteria, the new drilling pit and vent/flare pit will be an unlined pit as detailed in Burlington's Revised Drilling / Workover Pit Construction / Operation Procedures dated November 11, 2004 on file at the NMOCD office. A portion of the vent/flare pit will be designed to manage fluids, and that portion will be unlined, as per the risk ranking criteria. Burlington Resources anticipates closing these pits according to the Drilling / Workover Pit Closure Procedure dated August 2, 2004 on file at the NMOCD office.

I hereby certify that the information above is true and complete to the best of my knowledge and belief. I further certify that any pit or below-grade tank has been/will be constructed or closed according to NMOCD guidelines ☐, a general permit ☒ or an (attached) alternative OCD-approved plan ☐.

SIGNATURE

TITLE

Sr. Regulatory Specialist

DATE

2/23/2006

Type or print name  
For State Use Only

Patsy Clugston

E-mail address:

pclugston@br-inc.com

Telephone No.

505-326-9518

APPROVED BY

TITLE

DEPUTY OIL &amp; GAS INSPECTOR, DIST. #3

DATE

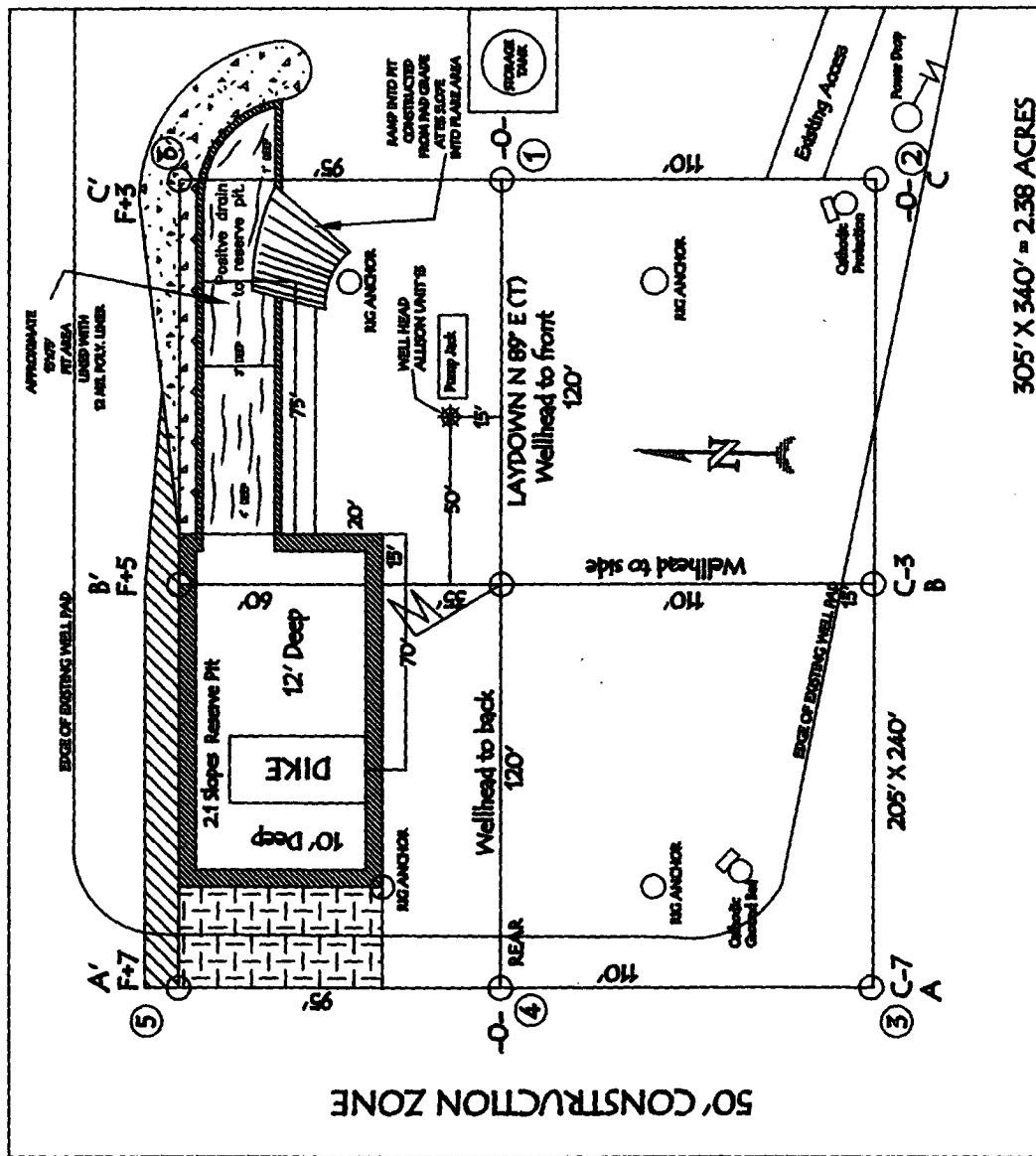
MAY 11, 2006

Conditions of Approval (if any):

BURLINGTON RESOURCES OIL & GAS COMPANY LP  
ALLISON UNIT 77, 375' FSL & 865' FWL  
SECTION 12, T-32-N, R-7-W, NMPM, SAN JUAN COUNTY, NM  
GROUND ELEVATION: 6591', DATE: JANUARY 5, 2006

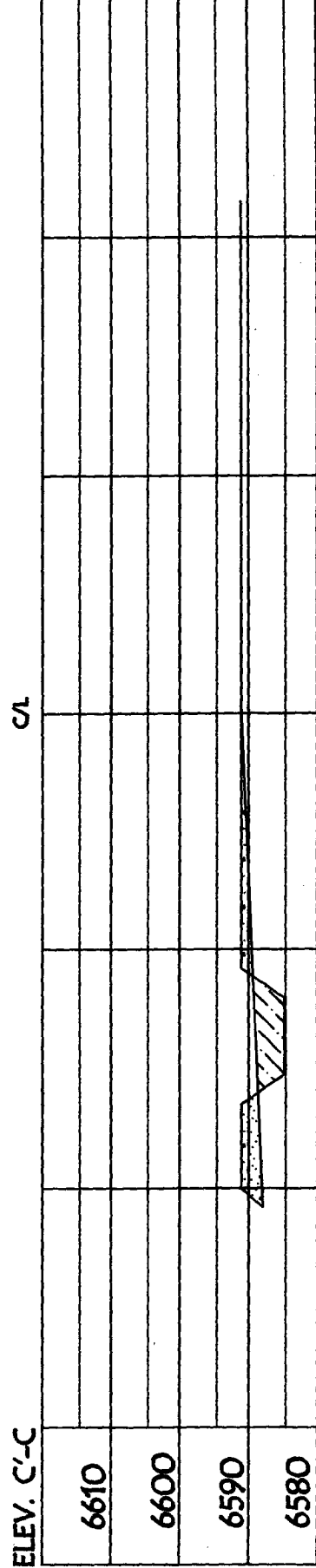
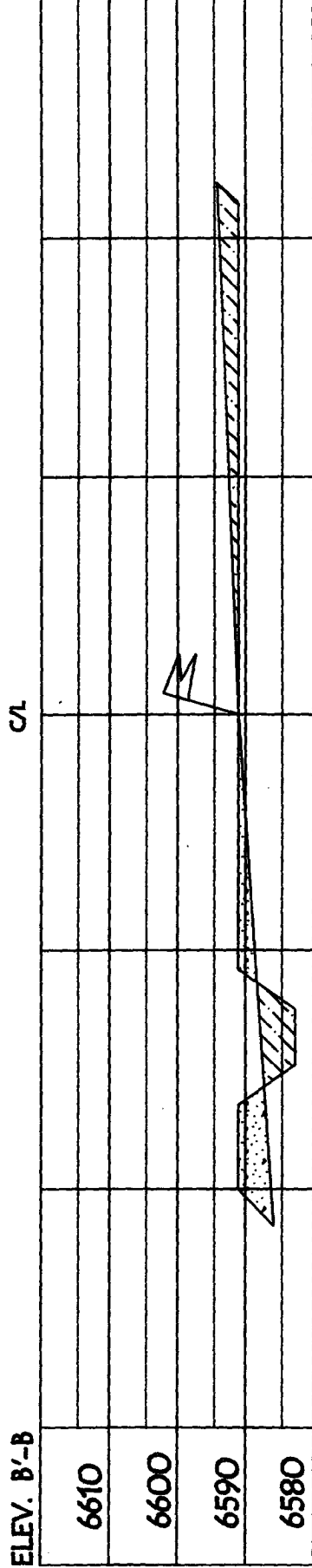
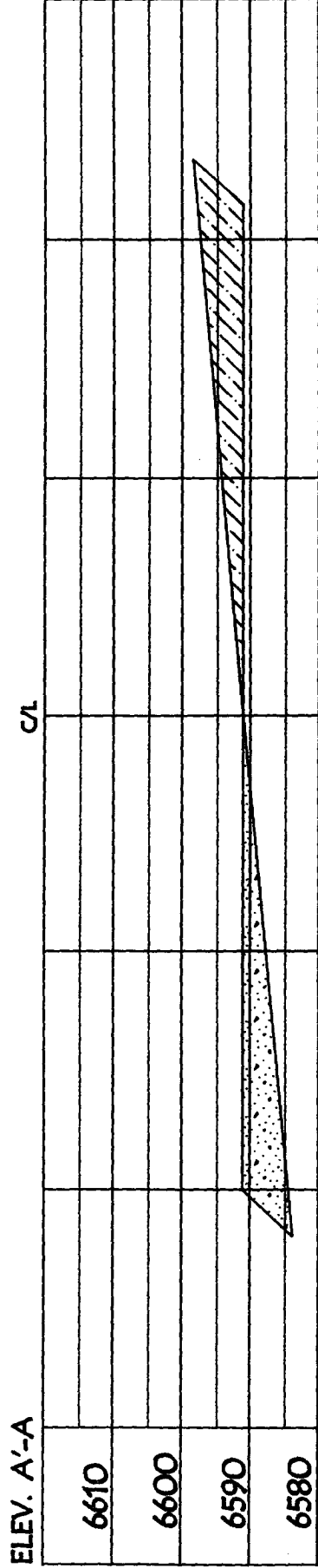
**RESERVE PIT DIKE, TO BE 8' ABOVE DEEP SIDE (OVERFLOW - 3' WIDE AND 1' ABOVE SHALLOW SIDE).**

NOTE: VECTOR SURVEYS IS NOT LIABLE FOR UNDERGROUND UTILITIES OR PIPELINES.  
CONTRACTOR SHOULD CALL ONE-CALL FOR LOCATION OF ANY MARKED OR UNMARKED BURIED  
PIPELINES OR CABLES ON WELL PAD AND OR ACCESS ROAD AT LEAST TWO (2) WORKING DAYS PRIOR TO CONSTRUCTION.



**LATITUDE: 36° 59.4181'N LONGITUDE: 107° 31.4074'W NAD27**

BURLINGTON RESOURCES OIL & GAS COMPANY LP  
 ALLISON UNIT 77, 375' FSL & 865' FWL  
 SECTION 12, T-32-N, R-7-W, NMMP, SAN JUAN COUNTY, NM  
 GROUND ELEVATION: 6591', DATE: JANUARY 5, 2006



NOTE: VECTOR SURVEYS IS NOT LIABLE FOR UNDERGROUND UTILITIES OR PIPELINES.  
 CONTRACTOR SHOULD CALL ONE-CALL FOR LOCATION OF ANY MARKED OR UNMARKED BURIED  
 PIPELINES OR CABLES ON WELL PAD AND OR ACCESS ROAD AT LEAST TWO (2) WORKING DAYS PRIOR TO CONSTRUCTION.

OPERATIONS PLAN

**Well Name:** Allison Unit #77  
**Location:** Unit M (SWSW) 375' FSL & 865' FWL, Section 12, T32N, R7W  
 San Juan County, New Mexico  
 Latitude 36° 59.4181'N; Longitude 107° 31.4074'W  
**Formation:** Los Pinos Frt Sand PC, South  
**Elevation:** 6591' GR

Formation:	Top	Bottom	Contents
Surface	San Jose		
Ojo Alamo	2376'		
Kirtland	2433'	3113'	gas
T/Fruitland	3113'		gas
Pictured Cliffs	3223'		
<b>Total Depth</b>	<b>3423'</b>		

**Logging Program:** None

**Mud Program:**

<u>Interval</u>	<u>Type</u>	<u>Weight</u>	<u>Vis. Fluid Loss</u>
0- 120'	Spud-Mud/Air/Air Mist	8.4-8.9	40-50 no control
120-3423'	Non-dispersed	8.4-9.5	30-60 no control

**Casing Program:**

<u>Hole Size</u>	<u>Depth Interval</u>	<u>Csg.Size</u>	<u>Wt.</u>	<u>Grade</u>
8 $\frac{3}{4}$ "	0 - 120'	7"	20.0#	J-55
6 $\frac{1}{4}$ "	0 - 3423'	4 1/2"	10.5#	J/K-55

**Tubing Program:**

0 - 3423'	2 3/8"	4.7#	J-55
-----------	--------	------	------

**Float Equipment:** 7" surface casing - guide shoe. Centralizers will be run in accordance with Onshore Order #2.

4 1/2" production casing - float shoe and float collar on bottom. Centralizers run every third joint above shoe to the base of the Ojo Alamo @ 2433'. Two turbolizing type centralizers - one below and one into the base of the Ojo Alamo @ 2433'. Standard centralizers thereafter every fourth joint up to the base of the surface pipe.

**Wellhead Equipment:** 7" x 4 1/2" x 2 3/8" x 11" 2000 psi xmas tree assembly.

March 1, 2006

**Cementing:**

7" surface casing Pre-Set Drilled - Cement with Type I, II cement with 20% flyash mixed at 14.5 ppg, 1.61 cu ft per sack yield. (Bring cement to surface). Wait on cement for 24 hours for pre-set holes before pressure testing or drilling out from under surface.

7" surface casing - Cement with 42 sx Type III cement with 0.25 pps Celloflake, 3% CaCl.  
(54cu ft of slurry @ 1.28 yield). 200% excess, bring cement to surface. Wait on cement for 8 hrs for conventionally set holes before pressure testing or drilling out from under surface.  
**WOC until cement establishes 250 psi compressive strength prior to NU of BOPE.**

4 1/2" production casing - Cement with 189sx (402 cf of slurry @ 2.13 yield) Premium Lite with 3% calcium chloride, 5 pps LCM-1, and 1/4#/sack celloflake, 0.4% FL-52, & 0.4% SMS. Tail with 90sx (124 cf of slurry @ 1.38 yield) Type III cmt with 1% calcium chloride, 1/4#/sack Celloflake and 0.2% FL-52. Total of 526 cf - 50% excess to circulate to surface.

**BOP and tests:**

Surface to TD - 11" 2000 psi (minimum double gate BOP stack (Reference Figure #1 and #2). Prior to drilling out surface casing, test <sup>rams</sup> ~~rams~~ to 600 psi/30 min.  
**BOPE**

Completion - 6" 2000 psi (minimum) double gate BOP stack (Reference Figure #2). Prior to completion operations, test rams and casing to 1500 psi/30 min.

From surface to TD - choke manifold (Reference Figure #3).

Pipe rams will be actuated at least once each day and blind rams actuated once each trip to test proper functioning. An upper kelly cock valve with handle and drill string safety valves to fit each drill string will be maintained and available on the rig floor.

**Additional information:**

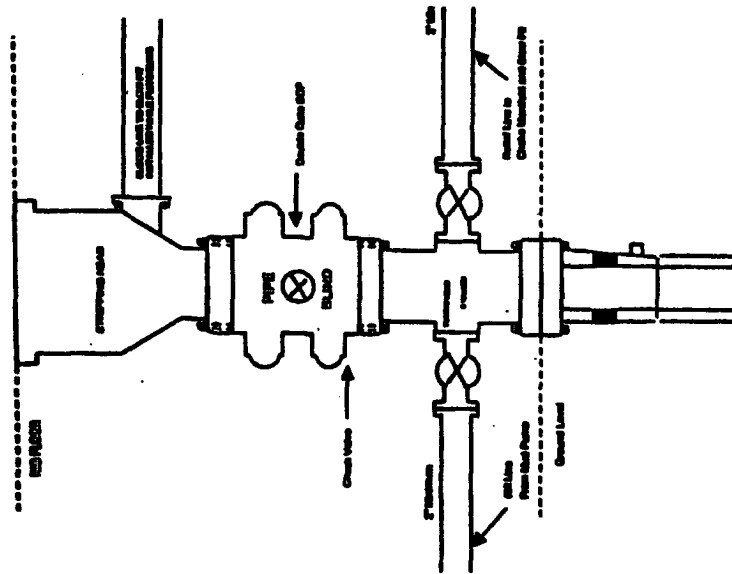
- \* The Fruitland Sands PC formation will be completed.
- \* Anticipated pore pressure for the Fruitland is between 600 - 700 psi.
- \* This gas is dedicated.
- \* The SW/4 of the section is dedicated to Fruitland Sands PC.
- \* New casing will be utilized.
- \* Pipe movement (either rotation or reciprocation) will be done if hole conditions permit.

Adam M. [Signature]  
Drilling Engineer

3/1/2006  
Date

# BURLINGTON RESOURCES

Completion/Workover Rig  
BOP Configuration  
2,000 psi System



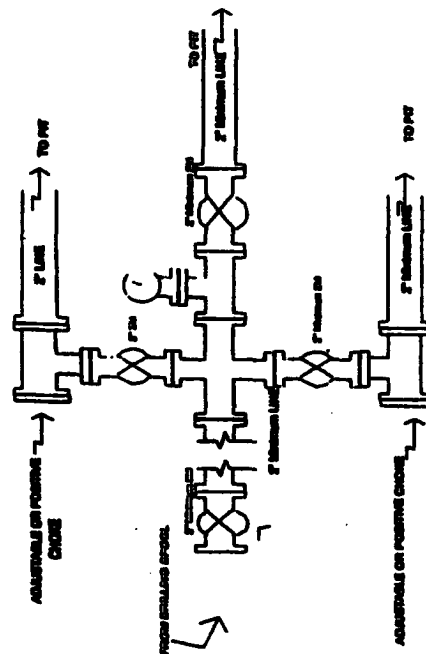
Minimum BOP Installation for all Completion/Workover Operations. 7-1/16" bore, 2000 psi minimum working pressure double gate BOP to be equipped with blind and pipe rams. A sheering head to be installed on the top of the BOP. All BOP equipment to 2000 psi working pressure or greater excluding 900 psi sheering head.

Figure #2

4-20-01

# BURLINGTON RESOURCES

Drilling Rig  
Choke Manifold Configuration  
2000 psi System



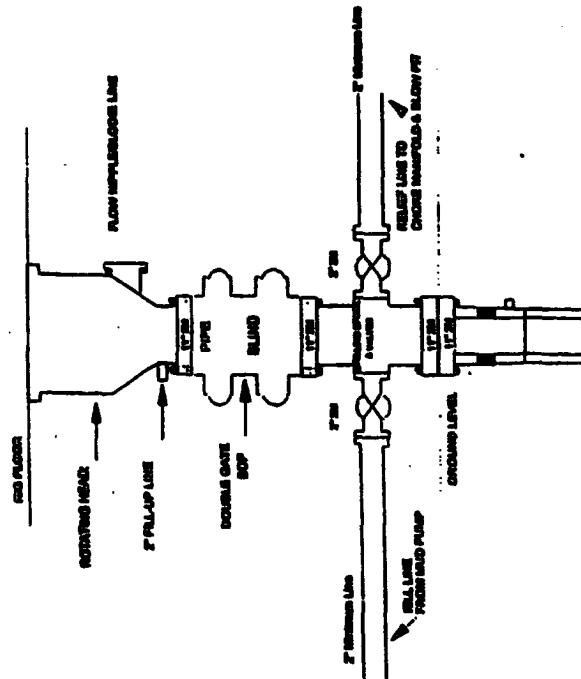
Choke manifold installation from Surface Casing Point to Total Depth. 2,000psi working pressure equipment with two chokes.

Figure #3

4-20-01

# Burlington Resources

Drilling Rig  
2000 psi System



BOP Installation from Surface Casing Point to Total Depth. 1 1/2" Bore 10" Minimum, 2000 psi working pressure double gate BOP to be equipped with blind and pipe rams. A sheering head to be installed on top of the BOP. All BOP equipment to 2,000 psi working pressure.

Figure #1