

District I  
PO Box 1980, Hobbs, NM 88241-1980

District II  
PO Drawer DD, Artesia, NM 88211-0719

District III  
1000 Rio Brazos Rd., Aztec, NM 87410

District IV  
PO Box 2088, Santa Fe, NM 87504-2088

State of New Mexico  
Energy, Minerals & Natural Resources Department

OIL CONSERVATION DIVISION  
PO Box 2088  
Santa Fe, NM 87504-2088

Form C-102  
Revised February 21, 1994  
Instructions on back  
Submit to Appropriate District Office  
State Lease - 4 Copies  
Fee Lease - 3 Copies

☐ AMENDED REPORT

WELL LOCATION AND ACREAGE DEDICATION PLAT

*API Number <b>30-045-32690</b>		*Pool Code <b>74599 771629</b>	*Pool Name <b><del>BASIN SAKOTA</del> / BASIN FRUITLAND COAL</b>
*Property Code	*Property Name <b>ALAMO 22</b>		*Well Number <b>08</b>
*GRID No. <b>173252</b>	*Operator Name <b>PATINA SAN JUAN, INC.</b>		*Elevation <b>5607'</b>

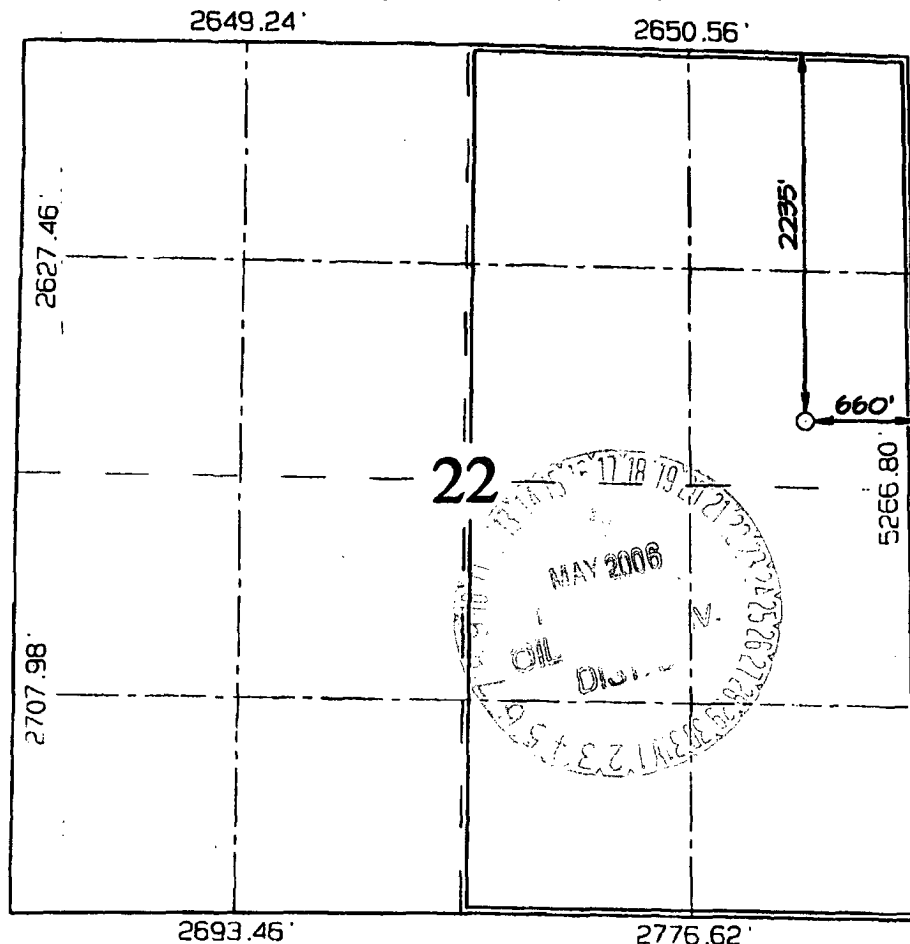
<sup>10</sup> Surface Location

UL or lot no.	Section	Township	Range	Lot 1ch	Feet from the	North/South line	Feet from the	East/West line	County
H	22	31N	13W		2235	NORTH	660	EAST	SAN JUAN

<sup>11</sup> Bottom Hole Location If Different From Surface

UL or lot no.	Section	Township	Range	Lot 1ch	Feet from the	North/South line	Feet from the	East/West line	County
*Dedicated Acres <b>320.0 Acres - (E/2)</b>					*Joint or Infill		*Consolidation Code		*Order No.

NO ALLOWABLE WILL BE ASSIGNED TO THIS COMPLETION UNTIL ALL INTERESTS HAVE BEEN CONSOLIDATED  
OR A NON-STANDARD UNIT HAS BEEN APPROVED BY THE DIVISION



<sup>17</sup> OPERATOR CERTIFICATION

I hereby certify that the information contained herein is true and complete to the best of my knowledge and belief

*James*  
Signature  
**JEAN M. MUSE**  
Printed Name  
**Reg/Engg Tech**  
Title  
**12/19/05**  
Date

<sup>18</sup> SURVEYOR CERTIFICATION

I hereby certify that the well location shown on this plat was plotted from field notes of actual surveys made by me or under my supervision, and that the same is true and correct to the best of my belief

Date Revised: FEBRUARY 16, 2005  
Survey Date: OCTOBER 8, 2004

Signature and Seal of Professional Surveyor



**JASON C. EDWARDS**  
Certificate Number 15269