

UNITED STATES  
DEPARTMENT OF THE INTERIOR  
BUREAU OF LAND MANAGEMENT

## Sundry Notices and Reports on Wells

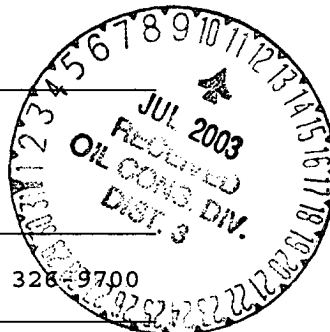
1. Type of Well  
GAS

2. Name of Operator  
**BURLINGTON**  
RESOURCES OIL & GAS COMPANY

3. Address & Phone No. of Operator  
PO Box 4289, Farmington, NM 87499 (505) 328-9700

4. Location of Well, Footage, Sec., T, R, M  
1725' FSL, 1850' FEL, Sec. 7, T-30-N, R-8-W, NMPM

5. Lease Number  
NMSF-078596
6. If Indian, All. or  
Tribe Name
7. Unit Agreement Name
8. Well Name & Number  
Pump Canyon SWD #1
9. API Well No.  
30-045-26970
10. Field and Pool  
Morrison Bluff Entrada
11. County and State  
San Juan Co, NM



## 12. CHECK APPROPRIATE BOX TO INDICATE NATURE OF NOTICE, REPORT, OTHER DATA

## Type of Submission

- ☒ Notice of Intent
- ☐ Subsequent Report
- ☐ Final Abandonment

## Type of Action

- ☐ Abandonment
- ☐ Recompletion
- ☐ Plugging Back
- ☒ Casing Repair
- ☐ Altering Casing
- ☐ Other -
- ☐ Change of Plans
- ☐ New Construction
- ☐ Non-Routine Fracturing
- ☐ Water Shut off
- ☐ Conversion to Injection

## 13. Describe Proposed or Completed Operations

It is intended to repair the casing in the subject well according to the attached procedure and wellbore diagram.

RECEIVED  
2003 JUL -8 AM 11:31  
070 Farmington, NM

## 14. I hereby certify that the foregoing is true and correct.

Signed [Signature] Title Regulatory Supervisor Date 7/7/03  
TLW

(This space for Federal or State Office use)

APPROVED BY [Signature] Title Pct. Eng. Date 7/8/03

CONDITION OF APPROVAL, if any:

Title 18 U.S.C. Section 1001, makes it a crime for any person knowingly and willfully to make to any department or agency of the United States any false, fictitious or fraudulent statements or representations as to any matter within its jurisdiction.

NMOC

**PUMP CANYON SWD #1**  
**Water Injection Well AIN: 327501**  
**Unit J, Section 7, T30N, R08W – 1725' FSL & 1850' FEL**  
**Lat 36.82285 – Long 107.71342**  
**6/16/2003 Casing Repair Procedure**

**Summary/Recommendation:**

The Pump Canyon SWD #1 water injection well was drilled and completed in 1988. 4-1/2" plastic lined tubing is landed in the Otis BWB packer at 7560'. Pressure testing of the 4-1/2" 10.5# K-55 tubing by 7" 23.0# N-80 casing annulus failed. We will blank the injection packer and pull the tubing to locate and remediate the hole in the 7" casing. All squeeze work will be done with Type III neat cement (1.37cuft/sx, 6.63gal/sx, 14.6ppg). KB – 12'.

1. Comply with all BLM, and BROG regulations. Conduct daily safety meetings for all personnel on location. **Notify BROG Regulatory (Peggy Cole 326-9727) and the appropriate Regulatory Agency 24 hours prior to pumping any cement job, planned or unplanned. Document approval in DIMS.**
2. Contact Joe Eudey – Expert Downhole to blank packer (327-7871). RU slickline truck. Shut in tubing pressure is 1900psi on 4-1/2" 10.5# K-55 plastic lined tubing. Set a blanking plug with slickline in the Otis BWB packer X-nipple (2.813" ID) at 7579'. There is an X-nipple (2.813" ID) in the tubing above the packer at 7559' – take steps to ensure the plug is not set in the tubing X-nipple. Bleed pressure off tubing to flow back tank to ensure that plug held. If blanking plug will not set notify Operations Engineer/Senior Rig Supervisor – prepare for snubbing operations to remove tubing from well.
2. MOL and RU workover rig. Obtain and record tubing, casing, and Bradenhead pressures. NU relief line on 7" by 4-1/2" annulus. ND WH and NU BOP. Test and record operation of BOP rams. Have wellhead and valves serviced as necessary. The secondary seal on both the 7" and 13-3/8" casing were tested OK on 6/18/03.
3. Release tubing from packer, TOO H and LD tubing. **UNSCREW TUBING IN LOW GEAR IN IDLE, LD WITH PROTECTORS, BE GENTLE AND PREPARE TO TAKE LONGER THAN USUAL TO LD TUBING.** Visually inspect tubing for corrosion or scale; replace any bad joints. Notify Operations Engineer/Senior Rig Supervisor of tubing condition.
4. TIH with RBP/packer combination for 7" 23# N-80 on 2-3/8" tbg. Set RBP at 7500'. Trip up hole one stand to approximately 7,440' and set packer; pressure test RBP to 500psi for 30min. Pressure test annulus to 2000psi and proceed up hole isolating holes in 7" 23.0# K-55 casing longstring with 2000psi. We believe the DV tool in the 7" casing at 7,369' is leaking. When holes are isolated establish a rate and pressure; notify Operations Engineer/Senior Rig Supervisor.
5. Prepare to squeeze holes with Type III neat cement (1.37cuft/sx, 6.63gal/sx, 14.6ppg). Spot 10gal sand on RBP and wait 1hr for sand to settle. Squeeze volume will be determined from hole location and injection parameters. Squeeze cement with workover packer and WOC overnight. Drill out squeeze and pressure test to 500psi for 30min.
6. TIH with 6-1/4" mill, X/O, and 4 3-1/2" DC's on 2-3/8" tubing. Drill out cement with H2O. Pressure test squeeze and 7" casing back to surface with 500psi for 30min. Record leak-off if any, if test squeeze does not hold prepare to re-squeeze.

7. TIH with retrieving tool for RBP and circulate sand off RBP at 7,500'. Release RBP and monitor for pressure. TOOH and lay down tubing. Lay down retrieving tool and RBP.
8. Make up seal assembly for Otis BWB packer and TIH with 4-1/2" 10.5# K-55 plastic lined tubing to packer at 7,560'. Load annulus with 148bbls of H2O mixed with 31gallons of BJ-Unichem Technihib 606 (oxygen scavenger-corrosion inhibitor). Sting into packer and land tubing.
9. Pressure test annulus to <sup>500</sup>300psi for 30min. Record any leakoff and report to Operations Engineer/Senior Rig Supervisor for contingency if pressure test fails. If pressure test holds, ND BOP and NU wellhead. RU slickline unit and retrieve blanking plug in X-nipple at 7,579' – be prepared for 1900psi. RD and MOL. Return well to injection.

Recommended:

Mike Wardinsky 7/1/03  
Operations Engineer  
Mike Wardinsky  
320-5113 (Cell)

Approved:

7-1-03  
Drilling Manager

Sundry Required:

YES NO

Approved:

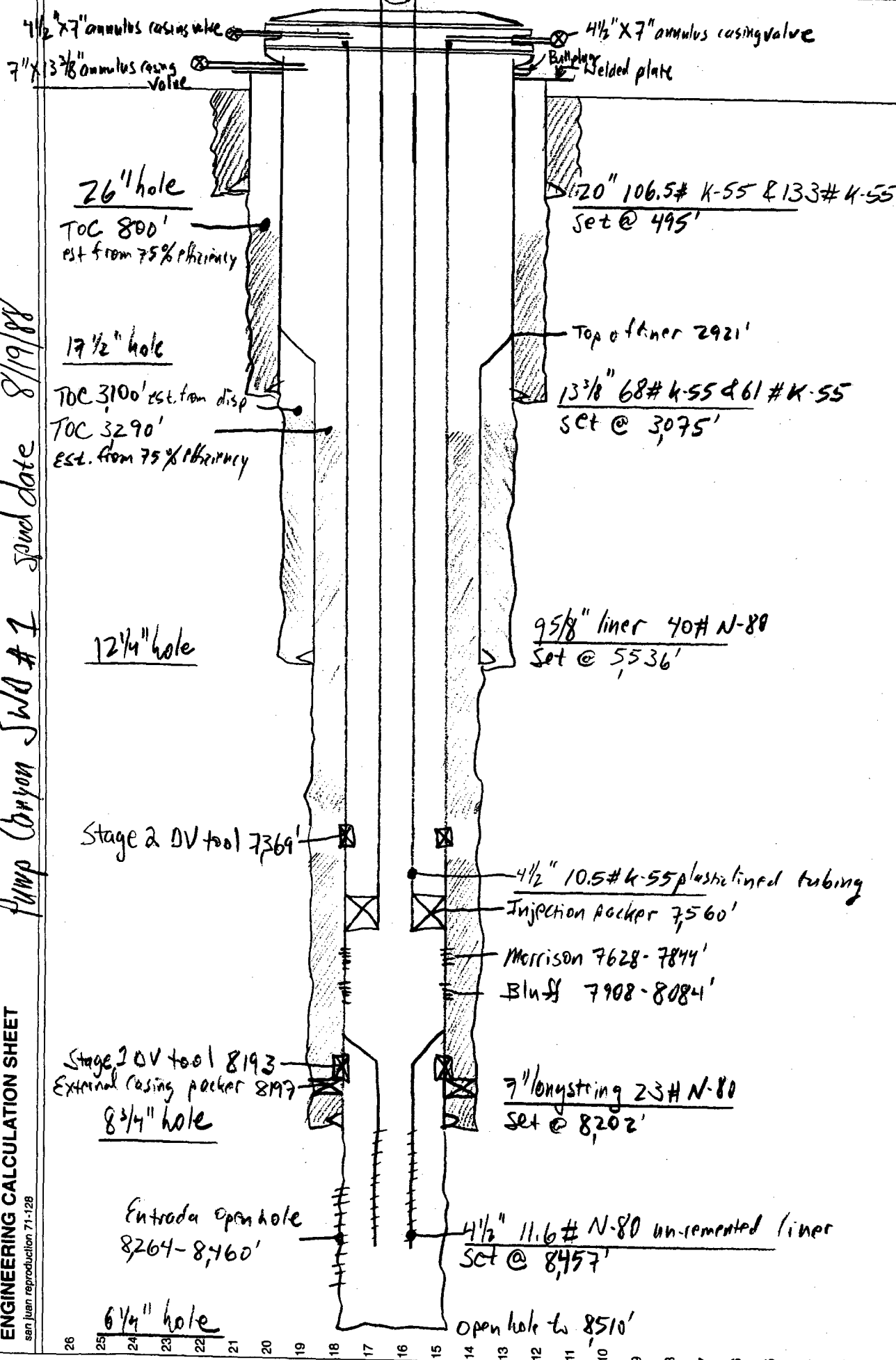
7-1-03  
Regulatory

Production Foreman	Hans Dube	326-9555 (Office)	949-2664 (Pager)
Specialist:	Les Hepner	320-2531 (Cell)	327-8619 (Pager)
Lease Operator:	Leroy Serrano	320-1364 (Cell)	324-7440 (Pager)

3D-045-26970000 -- Sect 7, 30N, 8W

Page 6/23/03  
Date 6/23/03  
By MHW

Pump Canyon SWD #1 sand date 8/19/88



41  
40  
39  
38  
37  
36  
35  
34  
33  
32  
31  
30  
29  
28  
27  
26  
25  
24  
23  
22  
21  
20  
19  
18  
17  
16  
15  
14  
13  
12  
11  
10  
9  
8  
7  
6  
5  
4  
3  
2  
1

# BURLINGTON RESOURCES

ENGINEERING CALCULATION SHEET

San Juan reproduction 71-128

3D-045-26970000 -- Sect 7, 30N, 8W

Pump Canyon SWD #1 sand date 8/19/88

Page 6/23/03  
Date 6/23/03  
By MHW

