

Submit 3 Copies To Appropriate District Office  
District I  
1625 N. French Dr., Hobbs, NM 88240  
District II  
1301 W. Grand Ave., Artesia, NM 88210  
District III  
1000 Rio Brazos Rd., Aztec, NM 87410  
District IV  
1220 S. St. Francis Dr., Santa Fe, NM 87505

State of New Mexico  
Energy, Minerals and Natural Resources

Form C-103  
May 27, 2004

OIL CONSERVATION DIVISION  
1220 South St. Francis Dr.  
Santa Fe, NM 87505

WELL API NO. 30-045-24554
5. Indicate Type of Lease STATE <input type="checkbox"/> FEE <input type="checkbox"/>
6. State Oil & Gas Lease No.
7. Lease Name or Unit Agreement Name H.J. Loe B
8. Well Number 2E
9. OGRID Number 131994
10. Pool name or Wildcat Basin Fruitland Coal / S. Blanco P.C.

<b>SUNDRY NOTICES AND REPORTS ON WELLS</b> (DO NOT USE THIS FORM FOR PROPOSALS TO DRILL OR TO DEEPEN OR PLUG BACK TO A DIFFERENT RESERVOIR. USE "APPLICATION FOR PERMIT" (FORM C-101) FOR SUCH PROPOSALS.)	
1. Type of Well: Oil Well <input type="checkbox"/> Gas Well <input checked="" type="checkbox"/> Other	
2. Name of Operator Four Star Oil and Gas Company	
3. Address of Operator P.O. Box 36366 Houston, TX 77236	
4. Well Location Unit Letter <u>E</u> : <u>1700</u> feet from the <u>North</u> line and <u>1050</u> feet from the <u>West</u> line Section <u>23</u> Township <u>29N</u> Range <u>12W</u> NMPM <u>San Juan</u> County	
11. Elevation (Show whether DR, RKB, RT, GR, etc.) 5657' GR	
Pit or Below-grade Tank Application <input type="checkbox"/> or Closure <input type="checkbox"/>	
Pit type _____ Depth to Groundwater _____ Distance from nearest fresh water well _____ Distance from nearest surface water _____	
Pit Liner Thickness: _____ mil Below-Grade Tank: Volume <u>95</u> bbls; Construction Material _____	

12. Check Appropriate Box to Indicate Nature of Notice, Report or Other Data

NOTICE OF INTENTION TO:

PERFORM REMEDIAL WORK ☐ PLUG AND ABANDON ☐  
TEMPORARILY ABANDON ☐ CHANGE PLANS ☐  
PULL OR ALTER CASING ☐ MULTIPLE COMPL ☐

OTHER: Tank Installation ☒

SUBSEQUENT REPORT OF:

REMEDIAL WORK ☐ ALTERING CASING ☐  
COMMENCE DRILLING OPNS. ☐ P AND A ☐  
CASING/CEMENT JOB ☐

OTHER: ☐

13. Describe proposed or completed operations. (Clearly state all pertinent details, and give pertinent dates, including estimated date of starting any proposed work). SEE RULE 1103. For Multiple Completions: Attach wellbore diagram of proposed completion or recompletion.

Four Star Oil and Gas Company respectfully requests permission for the installation of a below ground pit tank. A form C-144 to register the tank will be submitted once the tank is installed. Attached is a standard diagram of the pit tank for your use and review.



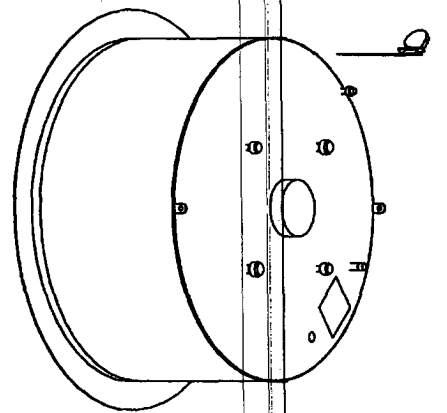
I hereby certify that the information above is true and complete to the best of my knowledge and belief. I further certify that any pit or below-grade tank has been/will be constructed or closed according to NMOC guidelines ☐, a general permit ☐ or an (attached) alternative OCD-approved plan ☐.

SIGNATURE Pamela Rainey TITLE Regulatory Assistant DATE 7/27/2006

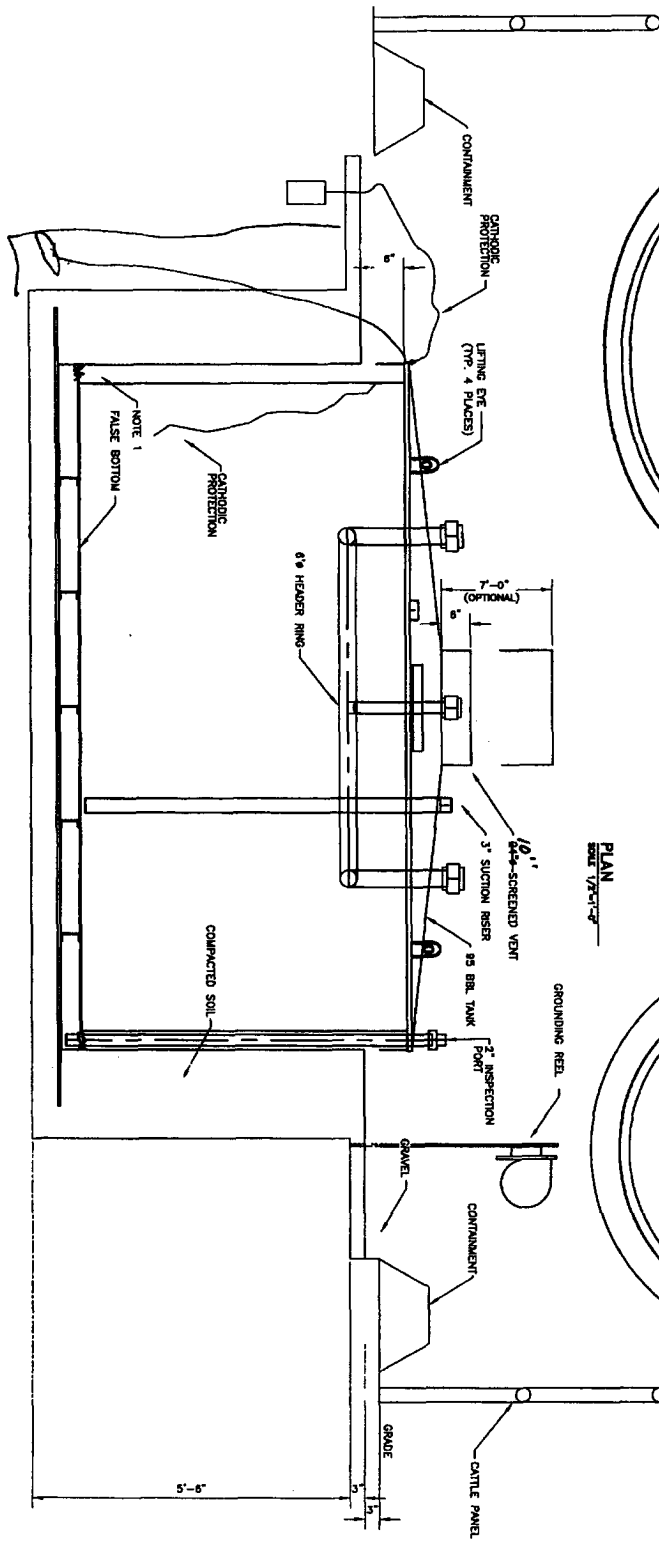
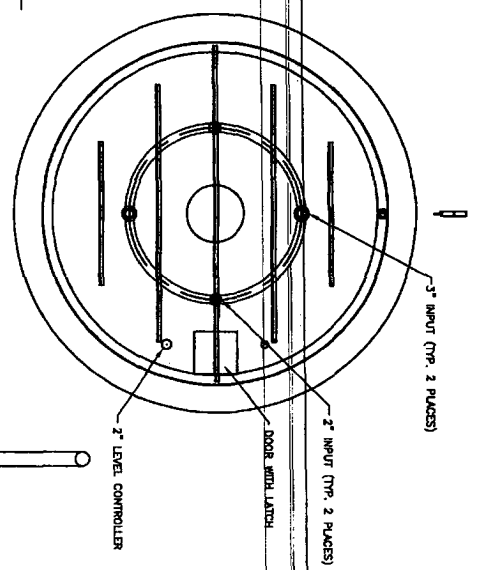
Type or print name Pamela Rainey E-mail address: prcx@chevron.com Telephone No. 281-561-4859

**For State Use Only**

APPROVED BY: [Signature] TITLE DEPUTY OIL & GAS INSPECTOR, DIST. 3 DATE JUL 28 2006  
Conditions of Approval (if any):



PLAN  
SCALE 1/8"=1'-0"



ELEVATION  
SCALE 1/8"=1'-0"

1. FABRICATOR TO PRESSURE TEST THE AREA BETWEEN THE TANK WALLS TO ENSURE LEAK-FREE DOUBLE CONTAINMENT.

REV	BY	DATE	REVISION
1	10/1/98	10/1/98	10/1/98
2	10/1/98	10/1/98	10/1/98
3	10/1/98	10/1/98	10/1/98
4	10/1/98	10/1/98	10/1/98
5	10/1/98	10/1/98	10/1/98
6	10/1/98	10/1/98	10/1/98
7	10/1/98	10/1/98	10/1/98
8	10/1/98	10/1/98	10/1/98
9	10/1/98	10/1/98	10/1/98
10	10/1/98	10/1/98	10/1/98
11	10/1/98	10/1/98	10/1/98
12	10/1/98	10/1/98	10/1/98
13	10/1/98	10/1/98	10/1/98
14	10/1/98	10/1/98	10/1/98
15	10/1/98	10/1/98	10/1/98
16	10/1/98	10/1/98	10/1/98
17	10/1/98	10/1/98	10/1/98
18	10/1/98	10/1/98	10/1/98
19	10/1/98	10/1/98	10/1/98
20	10/1/98	10/1/98	10/1/98
21	10/1/98	10/1/98	10/1/98
22	10/1/98	10/1/98	10/1/98
23	10/1/98	10/1/98	10/1/98
24	10/1/98	10/1/98	10/1/98
25	10/1/98	10/1/98	10/1/98
26	10/1/98	10/1/98	10/1/98
27	10/1/98	10/1/98	10/1/98
28	10/1/98	10/1/98	10/1/98
29	10/1/98	10/1/98	10/1/98
30	10/1/98	10/1/98	10/1/98
31	10/1/98	10/1/98	10/1/98
32	10/1/98	10/1/98	10/1/98
33	10/1/98	10/1/98	10/1/98
34	10/1/98	10/1/98	10/1/98
35	10/1/98	10/1/98	10/1/98
36	10/1/98	10/1/98	10/1/98
37	10/1/98	10/1/98	10/1/98
38	10/1/98	10/1/98	10/1/98
39	10/1/98	10/1/98	10/1/98
40	10/1/98	10/1/98	10/1/98
41	10/1/98	10/1/98	10/1/98
42	10/1/98	10/1/98	10/1/98
43	10/1/98	10/1/98	10/1/98
44	10/1/98	10/1/98	10/1/98
45	10/1/98	10/1/98	10/1/98
46	10/1/98	10/1/98	10/1/98
47	10/1/98	10/1/98	10/1/98
48	10/1/98	10/1/98	10/1/98
49	10/1/98	10/1/98	10/1/98
50	10/1/98	10/1/98	10/1/98
51	10/1/98	10/1/98	10/1/98
52	10/1/98	10/1/98	10/1/98
53	10/1/98	10/1/98	10/1/98
54	10/1/98	10/1/98	10/1/98
55	10/1/98	10/1/98	10/1/98
56	10/1/98	10/1/98	10/1/98
57	10/1/98	10/1/98	10/1/98
58	10/1/98	10/1/98	10/1/98
59	10/1/98	10/1/98	10/1/98
60	10/1/98	10/1/98	10/1/98
61	10/1/98	10/1/98	10/1/98
62	10/1/98	10/1/98	10/1/98
63	10/1/98	10/1/98	10/1/98
64	10/1/98	10/1/98	10/1/98
65	10/1/98	10/1/98	10/1/98
66	10/1/98	10/1/98	10/1/98
67	10/1/98	10/1/98	10/1/98
68	10/1/98	10/1/98	10/1/98
69	10/1/98	10/1/98	10/1/98
70	10/1/98	10/1/98	10/1/98
71	10/1/98	10/1/98	10/1/98
72	10/1/98	10/1/98	10/1/98
73	10/1/98	10/1/98	10/1/98
74	10/1/98	10/1/98	10/1/98
75	10/1/98	10/1/98	10/1/98
76	10/1/98	10/1/98	10/1/98
77	10/1/98	10/1/98	10/1/98
78	10/1/98	10/1/98	10/1/98
79	10/1/98	10/1/98	10/1/98
80	10/1/98	10/1/98	10/1/98
81	10/1/98	10/1/98	10/1/98
82	10/1/98	10/1/98	10/1/98
83	10/1/98	10/1/98	10/1/98
84	10/1/98	10/1/98	10/1/98
85	10/1/98	10/1/98	10/1/98
86	10/1/98	10/1/98	10/1/98
87	10/1/98	10/1/98	10/1/98
88	10/1/98	10/1/98	10/1/98
89	10/1/98	10/1/98	10/1/98
90	10/1/98	10/1/98	10/1/98
91	10/1/98	10/1/98	10/1/98
92	10/1/98	10/1/98	10/1/98
93	10/1/98	10/1/98	10/1/98
94	10/1/98	10/1/98	10/1/98
95	10/1/98	10/1/98	10/1/98
96	10/1/98	10/1/98	10/1/98
97	10/1/98	10/1/98	10/1/98
98	10/1/98	10/1/98	10/1/98
99	10/1/98	10/1/98	10/1/98
100	10/1/98	10/1/98	10/1/98

CHEVRON NORTH AMERICA  
EXPLORATION AND PRODUCTION  
85 BBL. SUMP  
DETAILS