

Submit 3 Copies To Appropriate District Office
District I
1625 N. French Dr., Hobbs, NM 88240
District II
1301 W. Grand Ave., Artesia, NM 88210
District III
1000 Rio Brazos Rd., Aztec, NM 87410
District IV
1220 S. St. Francis Dr., Santa Fe, NM 87505

State of New Mexico
Energy, Minerals and Natural Resources

OIL CONSERVATION DIVISION
1220 South St. Francis Dr.
Santa Fe, NM 87505

Form C-103
Revised May 08, 2003

SUNDRY NOTICES AND REPORTS ON WELLS (DO NOT USE THIS FORM FOR PROPOSALS TO DRILL OR TO DEEPEN OR PLUG BACK TO A DIFFERENT RESERVOIR. USE "APPLICATION FOR PERMIT" (FORM C-101) FOR SUCH PROPOSALS.)		WELL API NO. 30-039-26393
1. Type of Well: Oil Well <input type="checkbox"/> Gas Well <input checked="" type="checkbox"/> Other		5. Indicate Type of Lease STATE <input type="checkbox"/> FEE <input checked="" type="checkbox"/>
2. Name of Operator McElvain Oil & Gas Properties, Inc.		6. State Oil & Gas Lease No.
3. Address of Operator 1050 17th Street #1800 Denver, CO 80265		7. Lease Name or Unit Agreement Name Bear Com 23
4. Well Location Unit Letter D : 1100 feet from the North line and 1100 feet from the West line Section 23 Township 26N Range 2W NMPM County Rio Arriba		8. Well Number 1
11. Elevation (Show whether DR, RKB, RT, GR, etc.) 7496' GL		9. OGRID Number 22044
		10. Pool name or Wildcat Blanco Mesaverde

12. Check Appropriate Box to Indicate Nature of Notice, Report or Other Data

NOTICE OF INTENTION TO:

PERFORM REMEDIAL WORK ☐ PLUG AND ABANDON ☒
TEMPORARILY ABANDON ☐ CHANGE PLANS ☐
PULL OR ALTER CASING ☐ MULTIPLE COMPLETION ☐
OTHER: ☐

SUBSEQUENT REPORT OF:

REMEDIAL WORK ☐ ALTERING CASING ☐
COMMENCE DRILLING OPNS. ☐ PLUG AND ABANDONMENT ☐
CASING TEST AND CEMENT JOB ☐
OTHER: ☐

13. Describe proposed or completed operations. (Clearly state all pertinent details, and give pertinent dates, including estimated date of starting any proposed work). SEE RULE 1103. For Multiple Completions: Attach wellbore diagram of proposed completion or recompletion.

McElvain Oil & Gas Properties, Inc. proposes to P&A this well as per the attached procedure.



I hereby certify that the information above is true and complete to the best of my knowledge and belief.

SIGNATURE John D. Steuble TITLE Engineering Manager DATE 6/24/2003

Type or print name John D. Steuble Telephone No. 303-893-0933

(This space for State use)

APPROVED BY Charles Hess DEPUTY OIL & GAS INSPECTOR, DIST. 3 DATE JUN 26 2003

Conditions of approval, if any:

McElvain Oil and Gas Properties, Inc.

Bear Com 23-1

P&A Procedure.

Location: 1100' FNL, 1100' FWL, Sec. 23. T26N R2W NMPM

Casing:

Surface:

12 1/4" hole to 551

9 5/8" 36# ST&C set at 547'.

Cemented with 300 sx (354 cuft) class 'B' with 3% CC, 1/4 #/sx celloflake mixed 15.6#/gal. Yield 1.18. Cement circulated to surface.

Production:

8 3/4" hole to 6300, 7 7/8" hole to 8508.

5 1/2" 15.5# J-55 LT&C and 17# N-80 LT&C. Set at 8508. DV tools at 3295 and 5902.

Cemented in 3 stages as follows.

1st stage. 435 sx (700.35 cf) poz mix with 2.75% gel, .2% fl, 1/4 #/sx celloflake, .2% antifoamer. 12.6#/gal, yield 1.61. Circulated trace cement off DV at 5902.

2nd stage. 350 sx (878.5 cf) lite crete mixed 9.5 #/gal, yield 2.51. Followed by 125 sx (201.25 cf) 50/50 poz with 2.75% gel, .2% fl 1/4 #/sx cellophane, .2% antifoamer mixed 12.4 #/gal, yield 1.61. Circulated good cement off of DV at 3295.

3rd stage. 368 sx (1070.88 cf) class 'B' with 3% extender, 1/4 #/gal celloflake, 2% CC, .2% antifoamer. Mixed 11.4 #/gal, yield 2.91. No returns while mixing or displacing. Cement top 158 (bond log).

Formation Tops

~~Na~~

Ojo Alamo

~~Kirtland~~

Pictured Cliffs

Menefee

Point Lookout

Mancos

Dakota

3494

3678

3835

5700.

6034.

6174.

8056.

Fruitland ~~6034~~ 3695 H

Perforations and Plugs.

CIBP at 8223 capped with 35' cement

7600 to 7852, 23 holes. Gallup

7553 to 7454, 22 holes, Gallup.

7102 to 7378, 22 holes, Gallup.

CIBP at 7093 capped with 35' cement.

CIBP at 6174 capped with 35' cement.

6051 to 6080 with 2 spf. Point Lookout.

5678 to 5681 Menefee

5689 to 5696 Menefee.

Tubing:

Notched collar, 1 jt 2 3/8, Seating nipple, 186 jts 2 3/8. Set at 6052.

Bear Com 23-1
P&A Procedure.

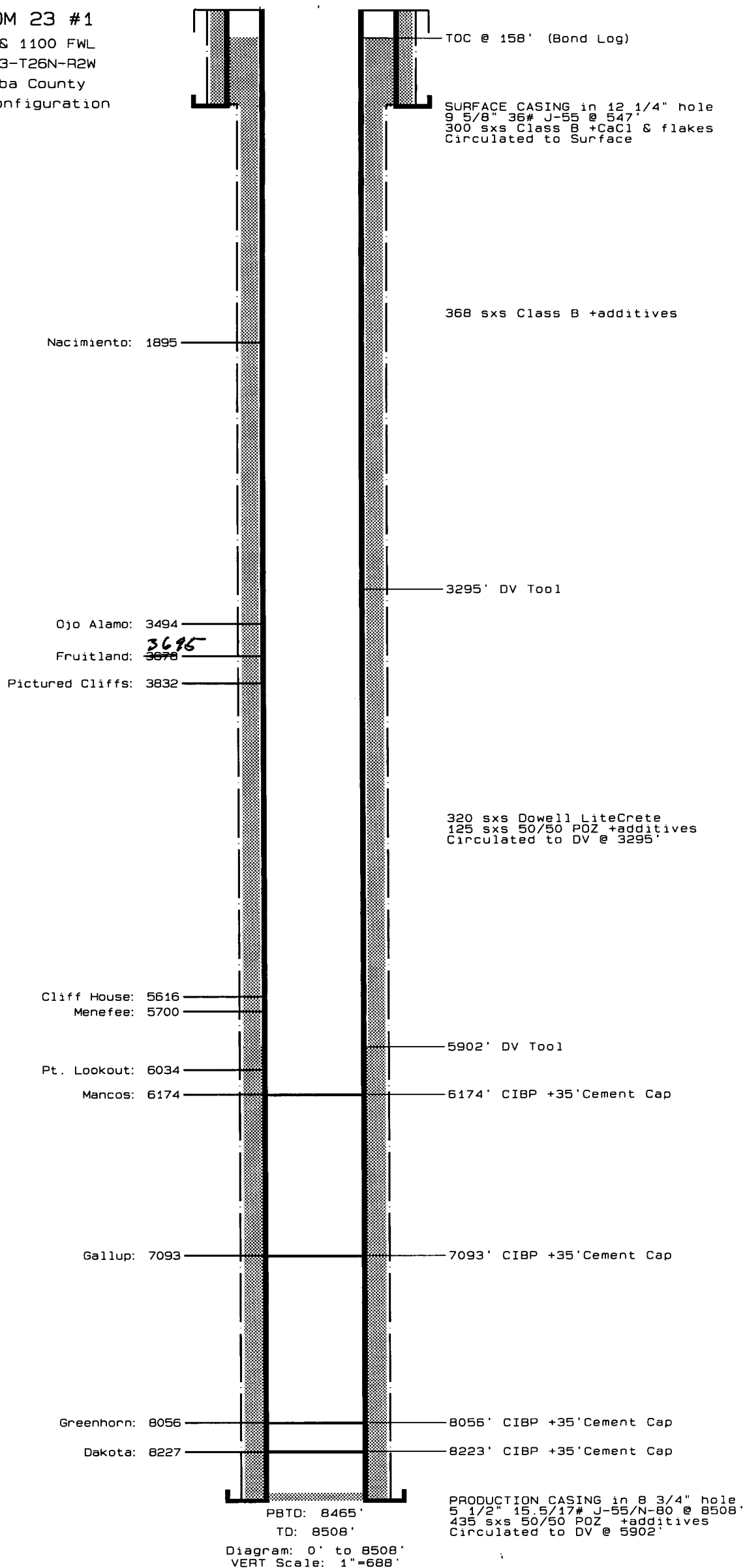
Proposed Procedure.

1. Rig up service unit.
2. Rig up BOP.
3. POOH and tally tubing
4. RUWL
5. RIH and set CIBP at 5616'
6. RDWL
7. RIH with tubing and tag CIBP
8. Circulate hole clean with fresh water.
9. Spot 10 sx plug on top of CIBP (80') ✓
10. Pull and lay down tubing to 3890'.
11. Spot 20 sx cement plug from 3890' to 3720'. (170' across PC)
12. Pull and lay down tubing to 3550'.
13. Spot 20 sx cement plug from 3550' to 3380'. (170' across Ojo Alamo)
14. Pull and lay down tubing to 1950
15. Spot 20 sx cement plug from 1950' to 1780'. (170' across Nacimiento)
16. Pull and lay down tubing to 600'.
17. Spot 20 sx plug from 600' to 430'. (170' across surface casing shoe)
18. Pull and lay down tubing to 50'.
19. Spot 7 sx plug from 50' to surface. *inside & outside casing*
20. Pull tubing and wash out remaining joints.
21. Dig out wellhead and cut off.
22. Run 1" down 9 5/8 and 5 1/2 annulus and cement with 40 sx to bring to top of surface.
23. Install dry hole marker.

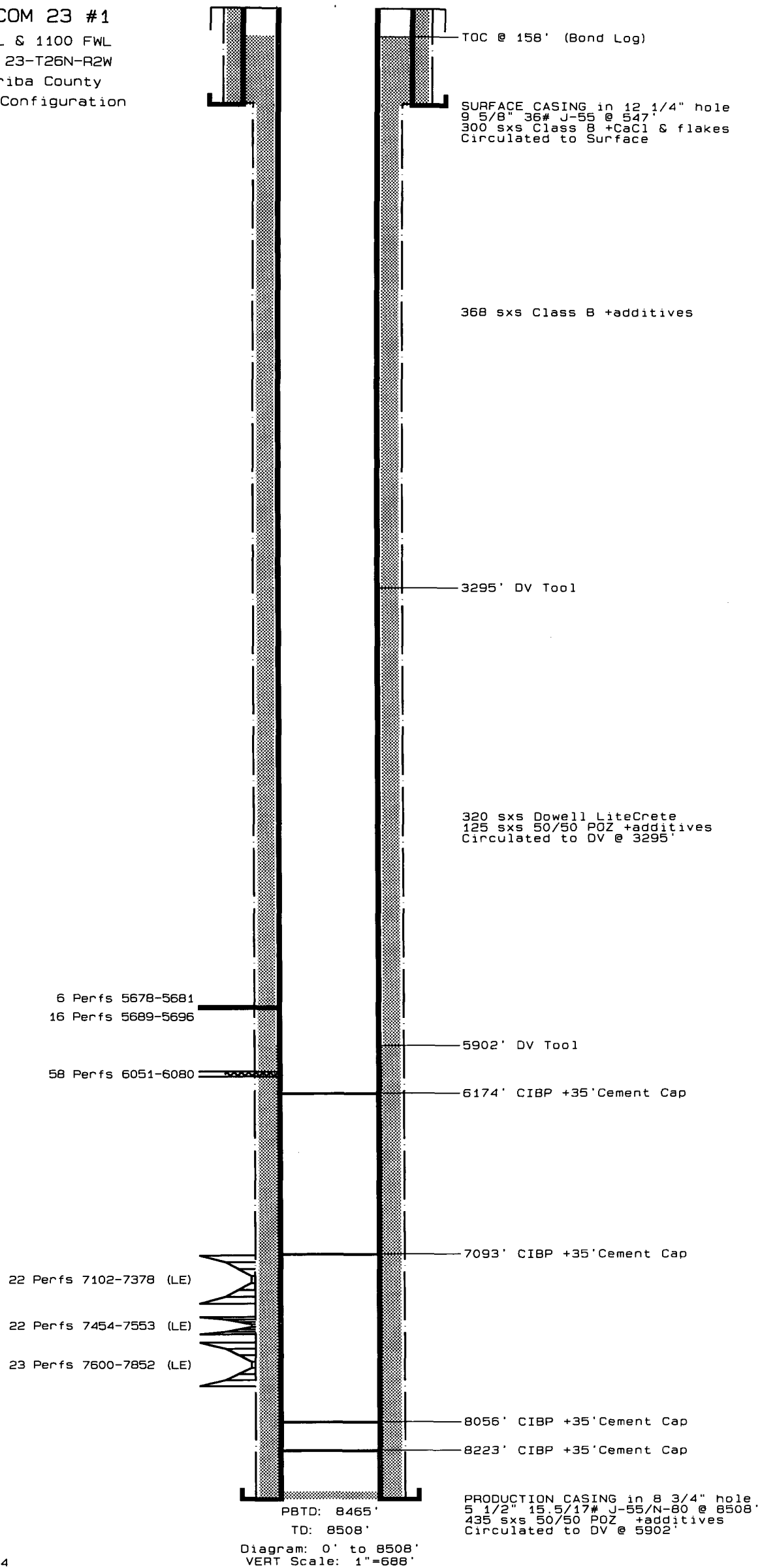
Additional Plugging RF

*Basin Fruitland Coal Top at 3695'
extend PC plug to 3595'*

BEAR COM 23 #1
 1100 FNL & 1100 FWL
 Section 23-T26N-R2W
 Rio Arriba County
 Existing Configuration

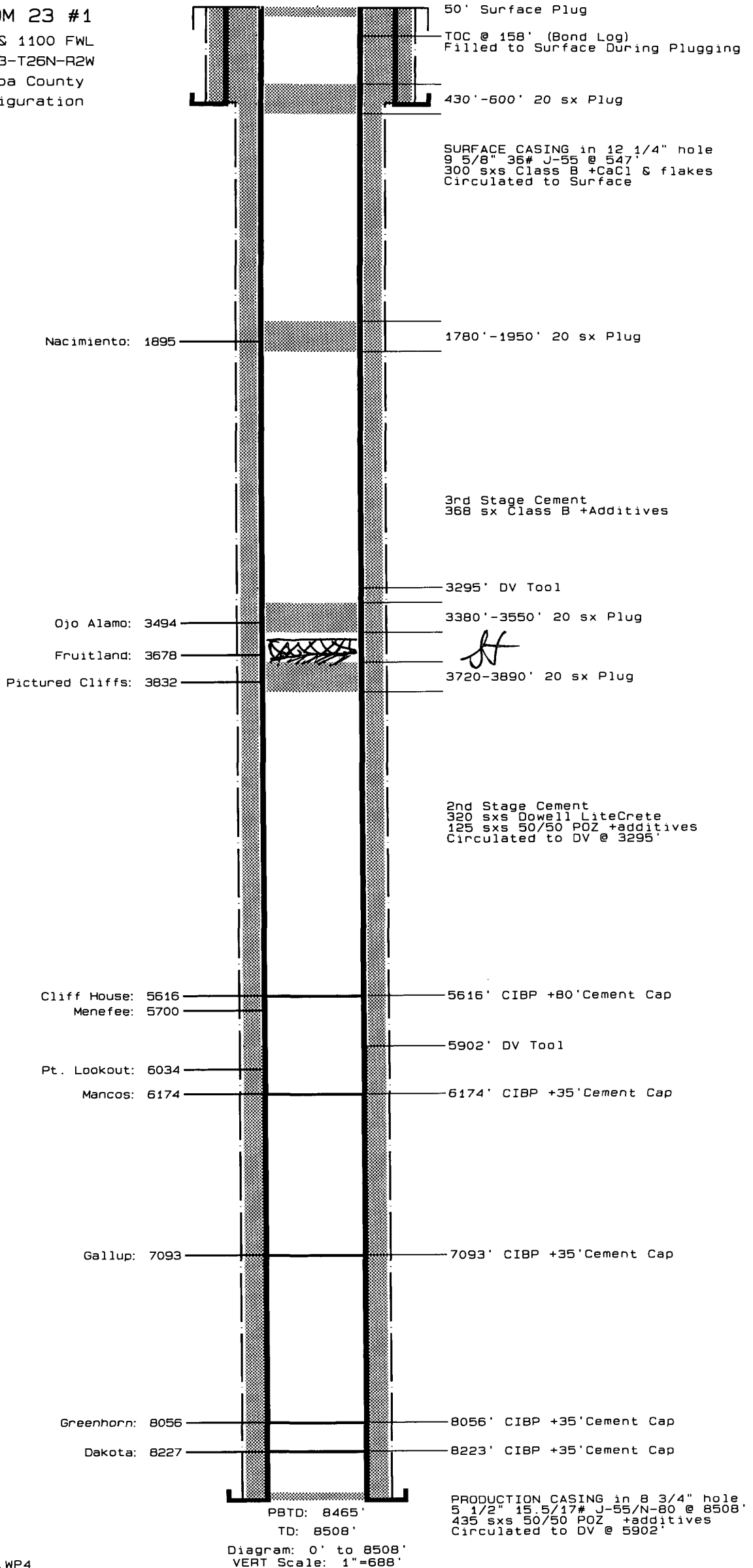


BEAR COM 23 #1
 1100 FNL & 1100 FWL
 Section 23-T26N-R2W
 Rio Arriba County
 Existing Configuration



BEAR COM 23 #1

1100 FNL & 1100 FWL
Section 23-T26N-R2W
Rio Arriba County
PSA Configuration



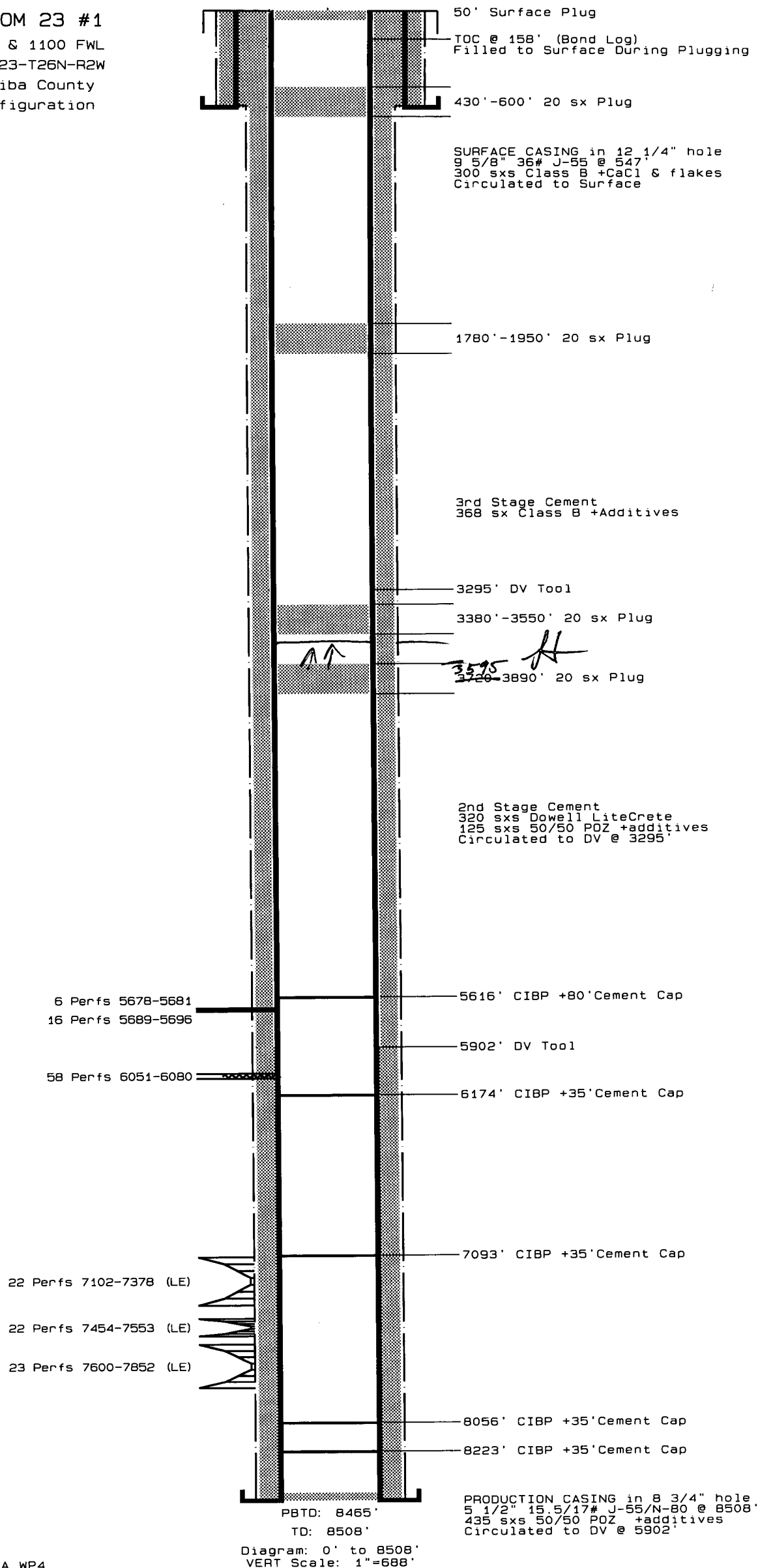
BEAR COM 23 #1

1100 FNL & 1100 FWL

Section 23-T26N-R2W

Rio Arriba County

PSA Configuration



24 Jun 2003

File: Bear23-1.PSA.WP4

Diagram: 0' to 8508'

VERT Scale: 1"=688'