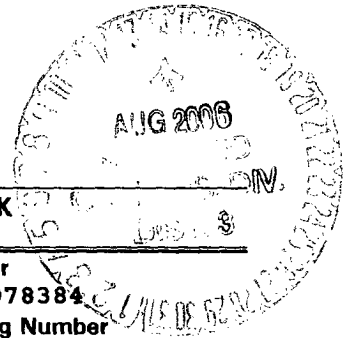


UNITED STATES  
DEPARTMENT OF THE INTERIOR  
BUREAU OF LAND MANAGEMENT



APPLICATION FOR PERMIT TO DRILL, DEEPEN, OR PLUG BACK

2006 AUG 2 PM 2 59

1a. Type of Work  
DRILL

5. Lease Number  
NMSF-078384  
Unit Reporting Number

RECEIVED  
OTO FARMINGTON NM

1b. Type of Well  
GAS

6. If Indian, All. or Tribe

2. Operator  
**BURLINGTON**  
RESOURCES Oil & Gas Company

7. Unit Agreement Name

3. Address & Phone No. of Operator  
PO Box 4289, Farmington, NM 87499  
  
(505) 326-9700

8. Farm or Lease Name  
Newsom B  
9. Well Number  
#7N

4. Location of Well  
Unit F (SENW), 1620' FNL, 1900' FWL

10. Field, Pool, Wildcat  
Basin Dakota

Latitude 36° 30.2771'N  
Longitude 107° 42.4439'W

F 11. Sec., Twn, Rge, Mer. (NMPM)  
Sec. 8, T26N, R8W

API # 30-045-33880

14. Distance in Miles from Nearest Town  
31.7 miles to Bloomfield, NM

12. County 13. State  
San Juan NM

15. Distance from Proposed Location to Nearest Property or Lease Line  
1620'

16. Acres in Lease

17. Acres Assigned to Well  
320 W/2

18. Distance from Proposed Location to Nearest Well, Drig, Compl, or Applied for on this Lease  
1120' - Newsom B #7

19. Proposed Depth  
6699'

20. Rotary or Cable Tools  
Rotary

21. Elevations (DF, FT, GR, Etc.)  
6329' GL

22. Approx. Date Work will Start

23. Proposed Casing and Cementing Program  
See Operations Plan attached

24. Authorized by: Amanda S. Smith  
Regulatory Analyst

8-2-06  
Date

PERMIT NO.

APPROVAL DATE

APPROVED BY

TITLE

DATE

Archaeological Report attached

Threatened and Endangered Species Report attached

NOTE: This format is issued in lieu of U.S. BLM Form 3160-3

Title 18 U.S.C. Section 1001, makes it a crime for any person knowingly and willfully to make to any department or agency of the United States any false, fictitious or fraudulent statements or presentations as to any matter within its jurisdiction.

NMOC

DISTRICT II  
1301 West Grand Avenue, Artesia, N.M. 88210DISTRICT III  
1000 Rio Brazos Rd., Aztec, N.M. 87410DISTRICT IV  
1220 S. St. Francis Dr., Santa Fe, NM 87505OIL CONSERVATION DIVISION  
1220 South St. Francis Dr.  
Santa Fe, NM 87505Submit to Appropriate District Office  
State Lease - 4 Copies  
Fee Lease - 3 Copies☐ AMENDED REPORT

## WELL LOCATION AND ACREAGE DEDICATION PLAT

*API Number 30-045 <b>33880</b>		*Pool Code 71599	*Pool Name Basin Dakota
*Property Code 7363	*Property Name NEWSOM B		*Well Number 7N
*OGRD No. 14538	*Operator Name BURLINGTON RESOURCES OIL AND GAS COMPANY LP		*Elevation 6329'

<sup>10</sup> Surface Location

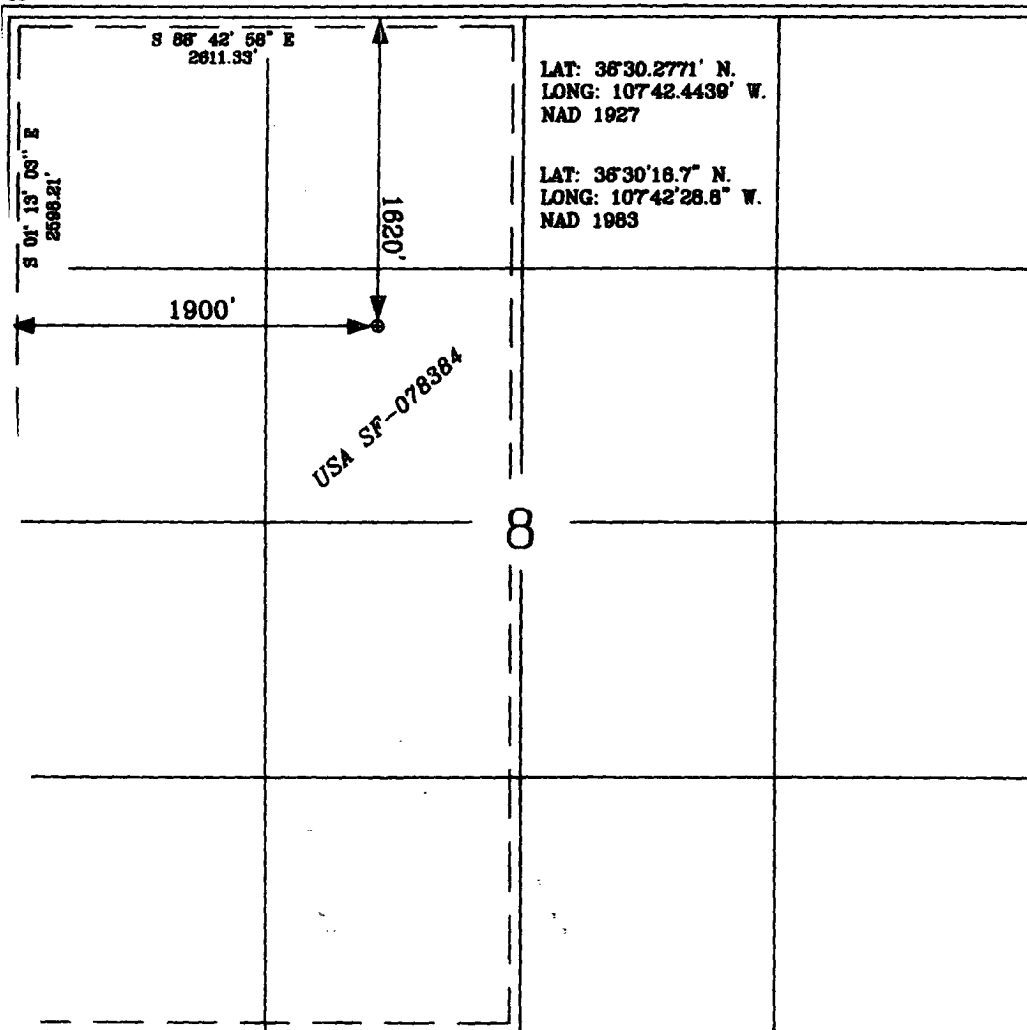
UL or lot no.	Section	Township	Range	Lot Idn	Feet from the	North/South line	Feet from the	East/West line	County
F	8	26-N	8-W		1820'	NORTH	1900'	WEST	SAN JUAN

<sup>11</sup> Bottom Hole Location If Different From Surface

UL or lot no.	Section	Township	Range	Lot Idn	Feet from the	North/South line	Feet from the	East/West line	County
<sup>12</sup> Dedicated Acres W/2 320 ac.			<sup>13</sup> Joint or Infill		<sup>14</sup> Consolidation Code		<sup>15</sup> Order No.		

NO ALLOWABLE WILL BE ASSIGNED TO THIS COMPLETION UNTIL ALL INTERESTS HAVE BEEN CONSOLIDATED  
OR A NON-STANDARD UNIT HAS BEEN APPROVED BY THE DIVISION

16

<sup>17</sup> OPERATOR CERTIFICATION

I hereby certify that the information contained herein is true and complete to the best of my knowledge and belief, and that this organization either owns a working interest or unleased mineral interest in the land including the proposed bottom hole location or has a right to drill this well at this location pursuant to a contract with an owner of such a mineral or a working interest, or to a voluntary pooling agreement or a compulsory pooling order heretofore entered by the division.

*Joni Clark*  
Signature  
Joni Clark  
Printed Name

<sup>18</sup> SURVEYOR CERTIFICATION

I hereby certify that the well location shown on this plat was plotted from field notes of actual surveys made by me or under my supervision, and that the same is true and correct to the best of my belief.

6-2-06  
Date of Survey  
Signature *Allen W. Russell*  
Allen W. Russell  
Professional Surveyor  
Certificate Number 15703

Office

Energy, Minerals and Natural Resources

May 27, 2004

District I

1625 N. French Dr., Hobbs, NM 88240

District II

1301 W. Grand Ave., Artesia, NM 88210

District III

1000 Rio Brazos Rd., Aztec, NM 87410

District IV

1220 S. St. Francis Dr., Santa Fe, NM 87505

**OIL CONSERVATION DIVISION**

1220 South St. Francis Dr.

Santa Fe, NM 87505

WELL API NO.

30-045- **33880**

5. Indicate Type of Lease

STATE ☐FEE ☐

6. State Oil &amp; Gas Lease No.

7. Lease Name or Unit Agreement Name

Newsom B

8. Well Number

#7N

9. OGRID Number

14538

10. Pool name or Wildcat

Basin Dakota

**SUNDRY NOTICES AND REPORTS ON WELLS**  
(DO NOT USE THIS FORM FOR PROPOSALS TO DRILL OR TO DEEPEN OR PLUG BACK TO A DIFFERENT RESERVOIR. USE "APPLICATION FOR PERMIT" (FORM C-101) FOR SUCH PROPOSALS.)

1. Type of Well:

Oil Well ☐Gas Well ☒

Other

2. Name of Operator

BURLINGTON RESOURCES OIL &amp; GAS COMPANY LP

3. Address of Operator

3401 E. 30TH STREET, FARMINGTON, NM 87402

4. Well Location

Unit Letter F : 1620' feet from the North line and 1900' feet from the West line  
Section 8 Township 26N Range 8W NMPM County San Juan

11. Elevation (Show whether DR, RKB, RT, GR, etc.)

6329'

Pit or Below-grade Tank Application

☐ or Closure ☐

Pit type

New Drill

Depth to Groundwater

&gt;100'

Distance from nearest fresh water well

&gt;1000'

Distance from nearest surface water

&lt;1000'

Pit Liner Thickness:

12

mil

Below-Grade Tank:

Volume

bbls;

Construction Material

## 12. Check Appropriate Box to Indicate Nature of Notice, Report or Other Data

**NOTICE OF INTENTION TO:**PERFORM REMEDIAL WORK ☐TEMPORARILY ABANDON ☐PULL OR ALTER CASING ☐PLUG AND ABANDON ☐CHANGE PLANS ☐MULTIPLE COMPL ☐

OTHER:

New Drill

☒**SUBSEQUENT REPORT OF:**REMEDIAL WORK ☐COMMENCE DRILLING OPNS. ☐CASING/CEMENT JOB ☐ALTERING CASING ☐P AND A ☐

OTHER:

☐

13. Describe proposed or completed operations. (Clearly state all pertinent details, and give pertinent dates, including estimated date of starting any proposed work). SEE RULE 1103. For Multiple Completions: Attach wellbore diagram of proposed completion or recompletion.

New Drill, Lined:

Burlington Resources proposes to construct a new drilling pit and an associated vent/flare pit. Based on Burlington's interpretation of the Ecosphere's risk ranking criteria, the new drilling pit will be a lined pit as detailed in Burlington's Revised Drilling / Workover Pit Construction / Operation Procedures dated November 11, 2004 on file at the NMOCD office. A portion of the vent/flare pit will be designed to manage fluids and that portion will be lined as per the risk ranking criteria. Burlington Resources anticipates closing these pits according to the Drilling / Workover Pit Closure Procedure dated August 2, 2004 on file at the NMOCD office

I hereby certify that the information above is true and complete to the best of my knowledge and belief. I further certify that any pit or below-grade tank has been/will be constructed or closed according to NMOCD guidelines ☐, a general permit ☒ or an (attached) alternative OCD-approved plan ☐.

SIGNATURE

TITLE

Regulatory Analyst

DATE

6/27/2006

Type or print name

Joni Clark

E-mail address:

jclark@br-inc.com

Telephone No.

505-326-9701

**For State Use Only**

APPROVED BY

TITLE

DEPUTY OIL &amp; GAS INSPECTOR, DIST. 63

DATE

AUG 14 2006

Conditions of Approval (if any):

NEWSOM B 7N, 1620' FNL & 1900' FWL

GROUND ELEVATION: 6329', DATE: MAY 22, 2006

**BLOW PIT; OVERFLOW PIPE 4' ABOVE BOTTOM OF BLOW PIT.**

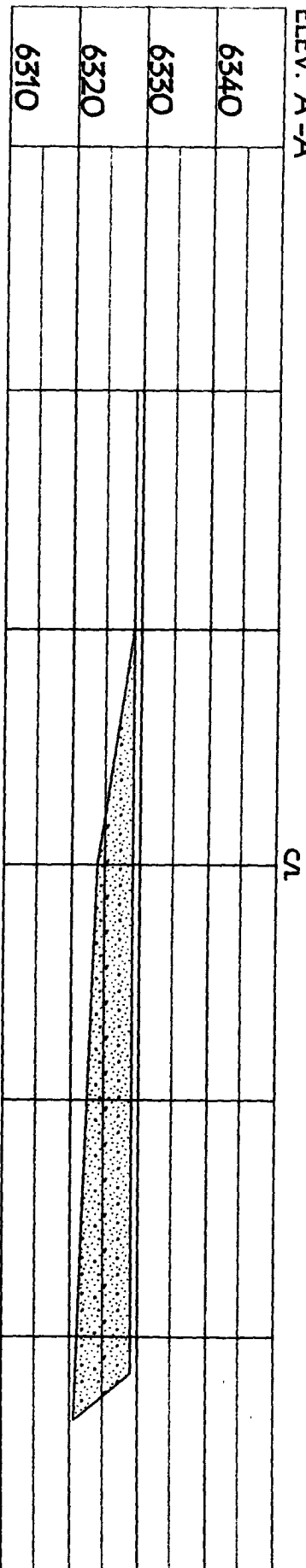


LAT: 36° 30.271' N LONG: 107° 42.4439' W NAD27

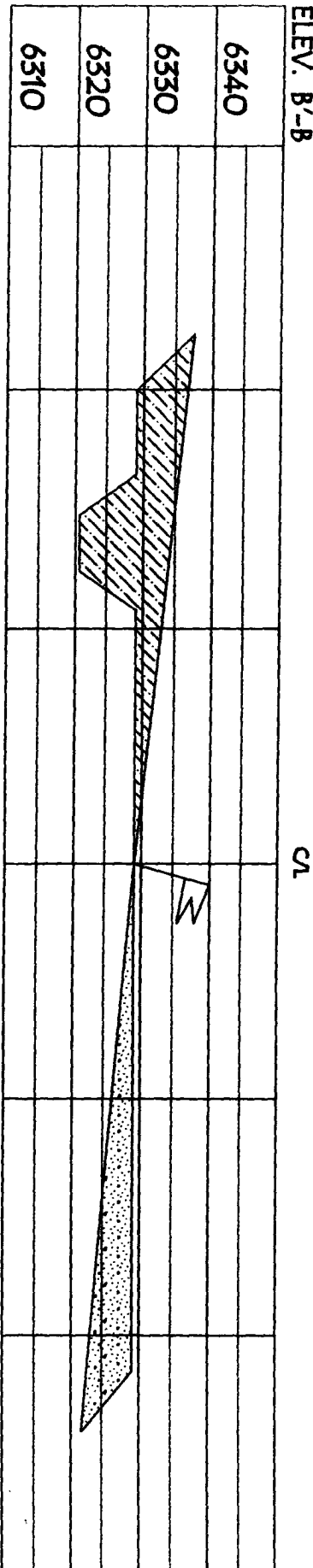
**PIPLINES OR CABLES ON WELL PAD AND OR ACCESS ROAD AT LEAST TWO (2) WORKING DAYS PRIOR TO CONSTRUCTION.**

**BURLINGTON RESOURCES OIL & GAS COMPANY LP**  
 NEWSOM B 7N, 1620' FNL & 1900' FWL  
 SECTION 8, T26N, R8W, NMPM, SAN JUAN COUNTY, NM  
 GROUND ELEVATION: 6329', DATE: MAY 22, 2006

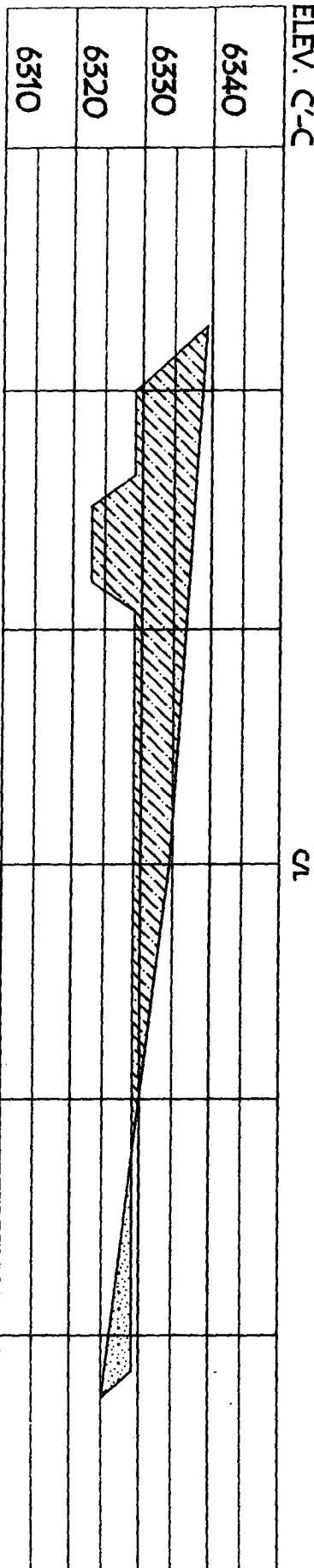
ELEV. A'-A



ELEV. B'-B



ELEV. C'-C



NOTE: VECTOR SURVEYS LLC IS NOT LIABLE FOR UNDERGROUND UTILITIES OR PIPELINES.  
 CONTRACTOR SHOULD CALL ONE-CALL FOR LOCATION OF ANY MARKED OR UNMARKED BURIED  
 PIPELINES OR CABLES ON WELL PAD AND OR ACCESS ROAD AT LEAST TWO (2) WORKING DAYS PRIOR TO CONSTRUCTION.

## OPERATIONS PLAN

**Well Name:** Newsom B #7N  
**Location:** 1620' FNL, 1900' FWL, Section 8, T-26-N, R-08-W  
San Juan County, New Mexico  
Latitude 36° 30.2771', Longitude 107° 42.4439'  
**Formation:** Basin Dakota  
**Elevation:** 6329' GL

<u>Formation Tops:</u>	<u>Top</u>	<u>Bottom</u>	<u>Contents</u>
Surface	San Jose	1349'	
Ojo Alamo	1349'	1451'	aquifer
Kirtland	1451'	1931'	gas
Fruitland	1931'	2111'	
Pictured Cliffs	2111'	2246'	gas
Lewis	2246'	2556'	gas
Huerfanito Bentonite	2556'	2986'	gas
Chacra	2986'	3668'	gas
Cliff House	3668'	3734'	
Menefee	3734'	4408'	gas
Point Lookout	4408'	4730'	gas
Mancos	4730'	5541'	gas
Gallup	5541'	6381'	gas
Greenhorn	6381'	6434'	gas
Graneros	6434'	6469'	gas
Two Wells	6469'	6544'	
Paguate	6544'	6602'	
Cubero	6602'	6679'	
Encinal	6679'	6699'	gas
TD	6699'		

### Logging Program:

Mud Logs/Coring/DST -  
Mud logs - none  
Coring - none  
DST - none  
Open hole - none  
Cased hole - Gamma Ray - surface to TD

### Mud Program:

<u>Interval</u>	<u>Type</u>	<u>Weight</u>	<u>Vis.</u>	<u>Fluid Loss</u>
0- 300'	Spud MUD/Air/Air Mist	8.4-9.0	40-50	no control
300'- 6699'	LSND	8.4-9.0	30-60	no control

### Casing Program (as listed, the equivalent, or better):

<u>Hole Size</u>	<u>Depth Interval</u>	<u>Csg. Size</u>	<u>Wt.</u>	<u>Grade</u>
12 1/4"	0' - 300'	8 5/8"	24.0#	J-55
7 7/8"	0' - 6699'	4 1/2"	10.5#	J-55

**Tubing Program:** 0' - 6699' 2 3/8" 4.7# J-55

### BOP Specifications, Wellhead and Tests:

#### Surface to Intermediate TD -

11" 2000 psi minimum double gate BOP stack (Reference Figure #1). After nipple-up prior to drilling out surface casing, ~~rams~~ and casing will be tested to 600 psi for 30 minutes.

#### Intermediate TD to Total Depth -

11" 2000 psi minimum double gate BOP stack (Reference Figure #1). After nipple-up prior to drilling out intermediate casing, rams and casing will be tested to 1500 psi for 30 minutes.

**Surface to Total Depth -**

2" nominal, 2000 psi minimum choke manifold (Reference Figure #3).

**Completion Operations -**

7 1/16" 2000 psi double gate BOP stack (Reference Figure #2). After nipple-up prior to completion, pipe rams, casing and liner top will be tested to 2000 psi for 15 minutes.

**Wellhead -**

8 5/8" x 4 1/2" x 2 3/8" x 2000 psi tree assembly.

**General -**

- Pipe rams will be actuated once each day and blind rams will be actuated once each trip to test proper functioning.
- An upper kelly cock valve with handle available and drill string valves to fit each drill string will be available on the rig floors at all times.
- BOP pit level drill will be conducted weekly for each drill crew.
- All BOP tests & drills will be recorded in daily drilling reports.
- Blind and pipe rams will be equipped with extension hand wheels.

**Cementing:**

8 5/8" surface casing conventionally drilled -

Cement with 321 sacks Type III cement with 0.25 pps Celloflake, 3% calcium chloride. (200% excess, bring cement to surface). Wait on cement appropriate time until cement achieves 250 psi compressive strength at 60 degrees F. prior to nipple up of BOPE. Wait on cement for 8 hrs for conventionally set holes before pressure testing or drilling out from under surface.

Saw tooth guide shoe on bottom. Bowspring centralizers will be run in accordance with Onshore Order #2.

4 1/2" Production Casing Two Stage -

Stage collar set @ 4258'. First Stage: Lead with w/269<sup>413</sup> sacks Premium Lite HS FM cmt w/0.25 pps celloflake, 0.3% CD-32, 6.25 pps LCM-1 and 1% FL-52. Second Stage: 460 sacks Premium Lite cmt w/3% calcium chloride, 0.4% metasilicate, 0.25 pps celloflake, 5 pps LCM-1 and 0.4% FL-52. (2259 cu ft - 50% excess, circulate to surface, run CBL/temperature survey if cement is not circulated to surface.)

Cement nose guide shoe on bottom with float collar spaced on top of shoe joint. Bowspring centralizers spaced every fourth joint off bottom, to the base of the Ojo Alamo @ 1451'. Two turbolating centralizers at the base of the Ojo Alamo 1451'. Bowspring centralizers spaced every fourth joint from the base of the Ojo Alamo to the base of the surface casing.

Note: If open hole logs are run, cement volumes will be based on 25% excess over caliper volumes.

If hole conditions permit, an adequate water spacer will be pumped ahead of each cement job to prevent cement/ mud contamination or cement hydration.

**Special Drilling Operations (Air/Mist Drilling):**

The following equipment will be operational while air/mist drilling:

- An anchored blooie line will be utilized to discharge all cuttings and circulating medium to the blow pit a minimum of 100' from the wellhead.
- The blooie line will be equipped with an automatic igniter or pilot light.
- Compressors will be located a minimum of 100' from the wellhead in the opposite direction from the blooie line.
- Engines will have spark arresters or water cooled exhaust.

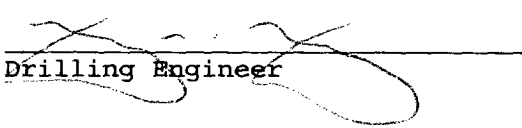
**Special Drilling Operations (Air/Mist Drilling):**

- The rotating head will be properly lubricated and maintained.
- A float valve will be utilized above the bit.
- Mud circulating equipment, water, and mud materials will be sufficient to maintain control of the well.

**Additional Information:**

- The Dakota formation will be completed.
- No abnormal temperatures or hazards are anticipated.
- Anticipated pore pressures are as follows:

Fruitland Coal	300 psi
Pictured Cliffs	600 psi
Mesa Verde	700 psi
Dakota	2500 psi
- Sufficient LCM will be added to the mud system to maintain well control, if lost circulation is encountered below the top of the Pictured Cliffs.
- The west half of Section 8 is dedicated to the Dakota formation.
- This gas is dedicated.

  
Drilling Engineer

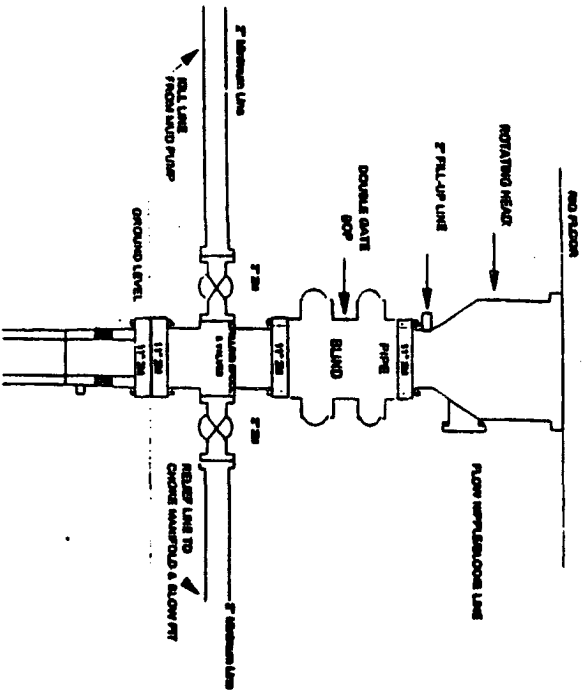
  
Date

7/5/06



# Burlington Resources

## Drilling Rig 2000 psi System



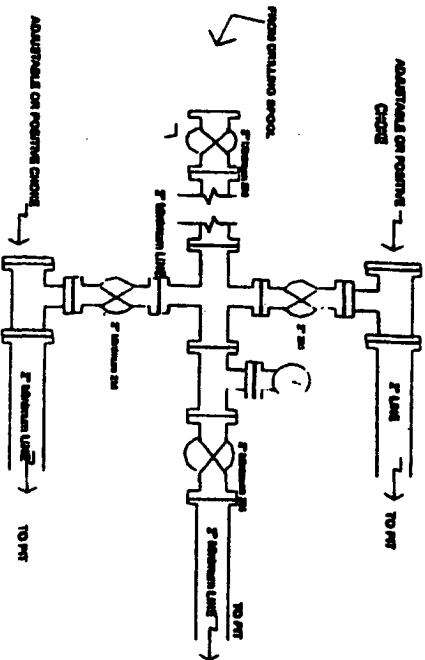
BCP installation from Surface Casing Point to Total Depth, 1 1/2\"/>

Figure #1

4-20-01

# BURLINGTON RESOURCES

## Drilling Rig Choke Manifold Configuration 2000 psi System



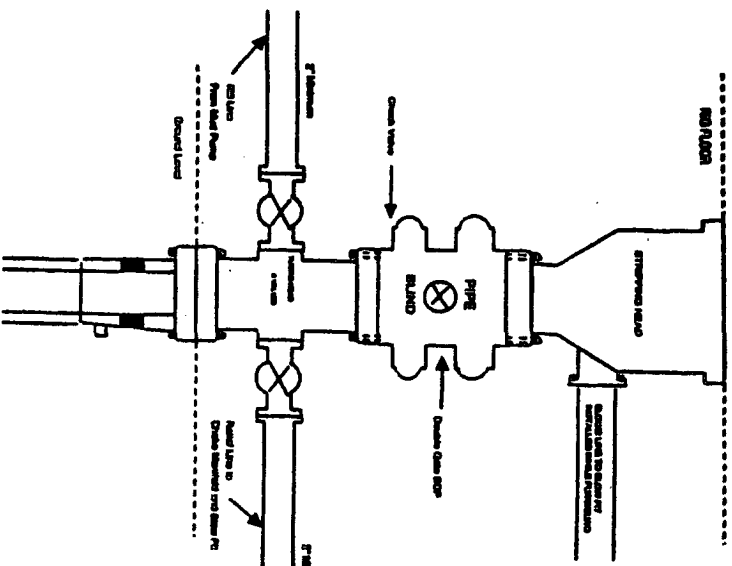
Choke manifold installation from Surface Casing Point to Total Depth, 2,000psi working pressure equipment with two chokes.

Figure #3

4-20-01

# BURLINGTON RESOURCES

## Completion/Workover Rig BCP Configuration 2,000 psi System



Minimum BOP installation for all Completion/Workover Operations, 7-1/16\"/>

Figure #2

4-20-01