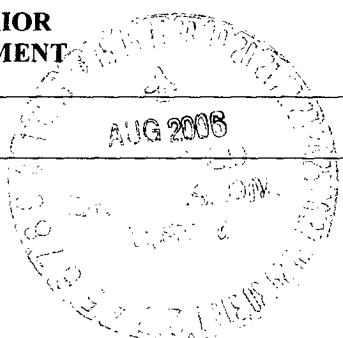


UNITED STATES  
DEPARTMENT OF THE INTERIOR  
BUREAU OF LAND MANAGEMENT

Sundry Notices and Reports on Wells



2006 AUG 15 8 32  
Lease Number  
NMSF-078388  
If Indian, All. or  
Tribe Name  
CTC FARMINGTON

1. Type of Well  
GAS

2. Name of Operator  
**BURLINGTON**  
RESOURCES OIL & GAS COMPANY LP

7. Unit Agreement Name

Huerfanito Unit

3. Address & Phone No. of Operator

PO Box 4289, Farmington, NM 87499 (505) 326-9700

8. Well Name & Number

Huerfanito Unit #91E  
API Well No.

4. Location of Well, Footage, Sec., T, R, M

30-045-33741

10. Field and Pool

Basin Dakota

Unit H (SENE), 1915' FNL & 810' FEL, Sec. 12, T26N, R9W, NMPM

11. County and State  
San Juan Co., NM

12. CHECK APPROPRIATE BOX TO INDICATE NATURE OF NOTICE, REPORT, OTHER DATA

Type of Submission

Type of Action

☒ Notice of Intent

☐ Abandonment

☐ Change of Plans

☒ Other - moved location

☒ Subsequent Report

☐ Recompletion

☐ New Construction

☐ Final Abandonment

☐ Plugging

☐ Non-Routine Fracturing

☐ Casing Repair

☐ Water Shut off

☐ Altering Casing

☐ Conversion to Injection

13. Describe Proposed or Completed Operations

The subject well was moved 30' to the east to avoid an Enterprise pipeline. The old footages were 1915' FNL & 780' FEL. Please make note of the new footages (shown in #4). Attached find the new plats, topo, cut & fill diagrams and proposed pipeline topo.

14. I hereby certify that the foregoing is true and correct.

Signed Patsy Clugston Title Sr. Regulatory Specialist Date 8/13/06

(This space for Federal or State Office use)

APPROVED BY [Signature] Title Branch Chief Date 8/15/06

CONDITION OF APPROVAL, if any

Title 18 U.S.C. Section 1001, makes it a crime for any person knowingly and willfully to make any department or agency of the United States any false, fictitious or fraudulent statements or representations as to any matter within its jurisdiction.

NMOC

8

District I  
PO Box 1980, Hobbs, NM 88241-1980

State of New Mexico  
Energy, Minerals & Natural Resources Department

Form O-1  
Revised February 21, 19

District II  
PO Drawer DD, Artesia, NM 88211-0719

OIL CONSERVATION DIVISION  
PO Box 2088  
Santa Fe, NM 87504-2088

Instructions on p.  
Submit to Appropriate District Office  
State Lease - 4 Copies  
Fee Lease - 3 Copies

District III  
1000 Rio Brazos Rd., Aztec, NM 87410

District IV  
PO Box 2088, Santa Fe, NM 87504-2088

☐ AMENDED REPORT

WELL LOCATION AND ACREAGE DEDICATION PLAT

<sup>1</sup> API Number 30-045-33741	<sup>2</sup> Pool Code 71599	<sup>3</sup> Pool Name Basin Dakota
<sup>4</sup> Property Code 7138	<sup>5</sup> Property Name HUERFANITO UNIT	<sup>6</sup> Well Number 91E
<sup>7</sup> GRID No. 14538	<sup>8</sup> Operator Name BURLINGTON RESOURCES OIL & GAS COMPANY, LP	<sup>9</sup> Elevation 6178'

<sup>10</sup> Surface Location


UL or lot no.	Section	Township	Range	Lot Idn	Feet from the	North/South line	Feet from the	East/West line	County
H	12	26N	9W		1915	NORTH	810	EAST	SAN JUAN

<sup>11</sup> Bottom Hole Location If Different From Surface

UL or lot no.	Section	Township	Range	Lot Idn	Feet from the	North/South line	Feet from the	East/West line	County

<sup>12</sup> Dedicated Acres 320 N2	<sup>13</sup> Joint or Infill	<sup>14</sup> Consolidation Code	<sup>15</sup> Order No.
---	-------------------------------	----------------------------------	-------------------------

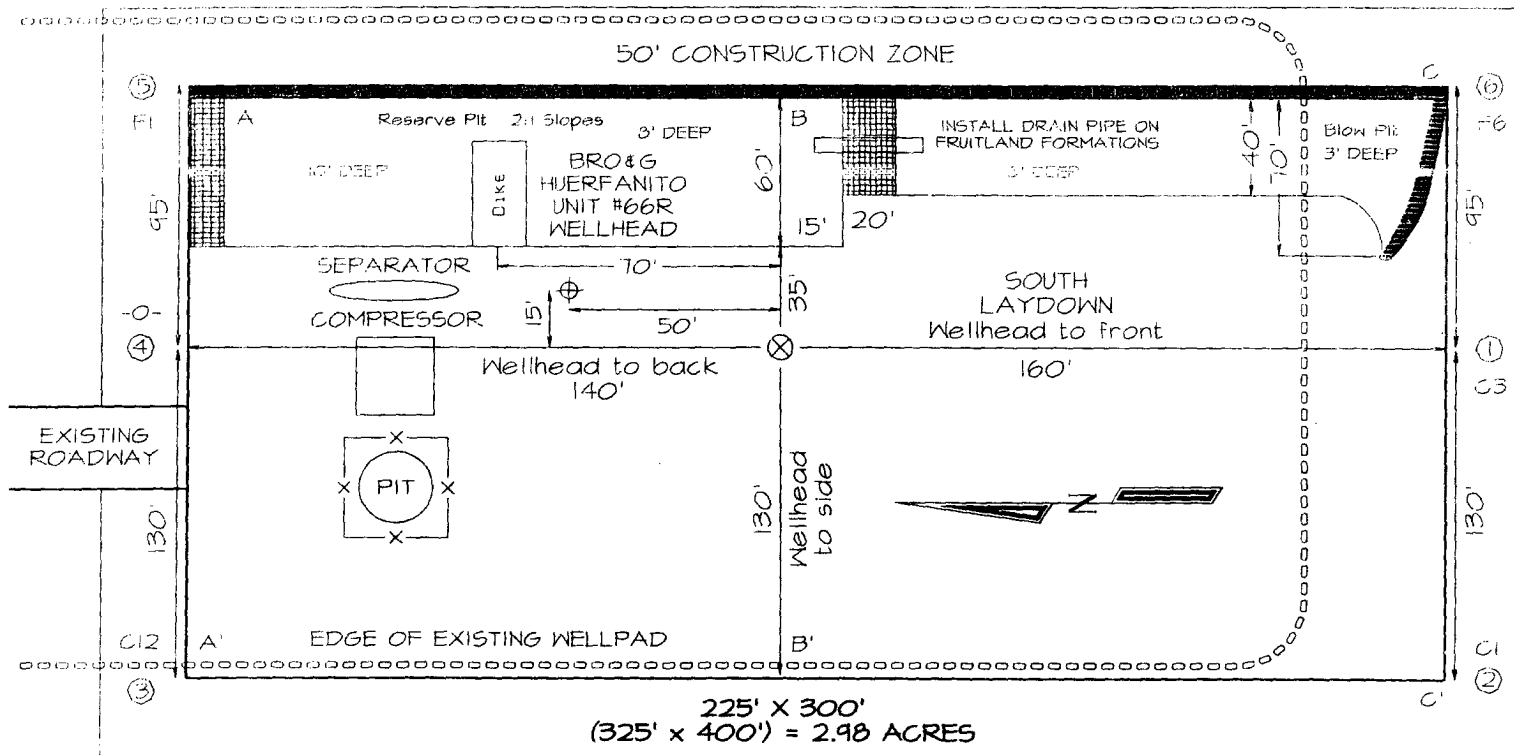
NO ALLOWABLE WILL BE ASSIGNED TO THIS COMPLETION UNTIL ALL INTERESTS HAVE BEEN CONSOLIDATED  
OR A NON-STANDARD UNIT HAS BEEN APPROVED BY THE DIVISION

<sup>16</sup> 5203.44' LEASE USA SF-078388 LAT: 36°30.2678' N LONG: 107°44.0607' W DATUM: NAD27 1790' 5271.42' 12 5208.72'	<sup>17</sup> OPERATOR CERTIFICATION I hereby certify that the information contained herein is true and complete to the best of my knowledge and belief  Signature Tracey N. Monroe  Printed Name Regulatory Analyst  Title 8/14/06  Date  <sup>18</sup> SURVEYOR CERTIFICATION I hereby certify that the well location shown on this plat was plotted from field notes of actual surveys made by me or under my supervision, and that the same is true and correct to the best of my belief.  Date of Survey: JULY 7, 2006  Signature and Seal of Professional Surveyor    JASON C. EDWARDS Certificate Number 15269
--	--

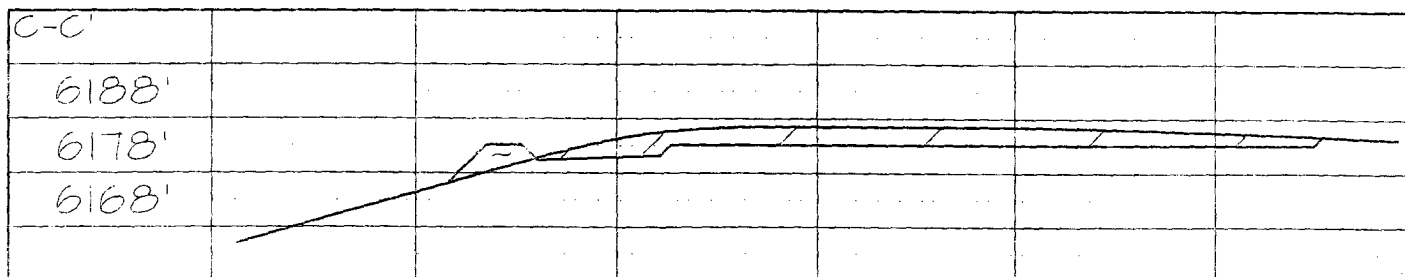
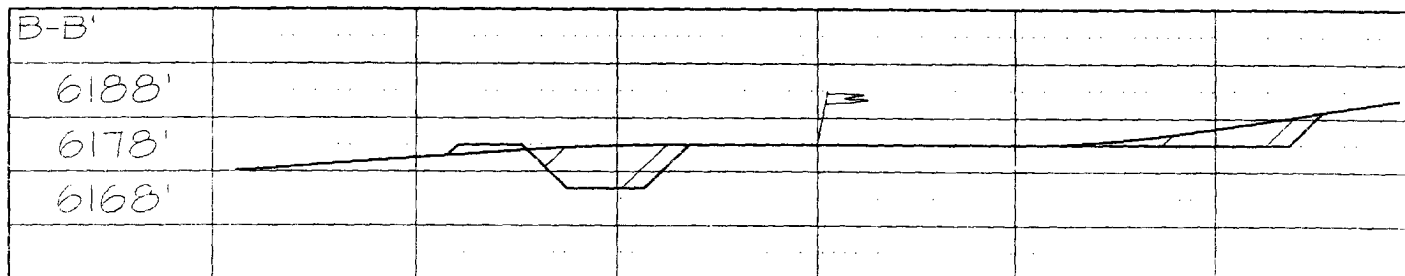
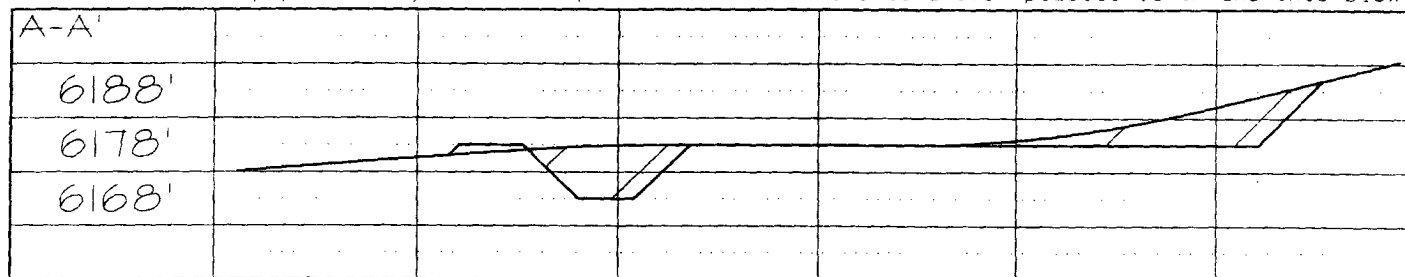
BURLINGTON RESOURCES OIL & GAS COMPANY, LP  
HUERFANITO UNIT #91B, 1915' FNL & 810' FEL  
SECTION 12, T26N, R9W, NMPM, SAN JUAN COUNTY, NM  
GROUND ELEVATION: 6178' DATE: JULY 7, 2006

LATITUDE: 36.50447° N  
LONGITUDE: 107.73496° W  
DATUM: NAD1983

ENTERPRISE P/L



Reserve Pit Dike: to be 8' above Deep side (overflow ~ 3' wide and 1' above shallow side).  
Blow Pit: overflow pipe halfway between top and bottom and to extend over plastic liner and into blow pit.

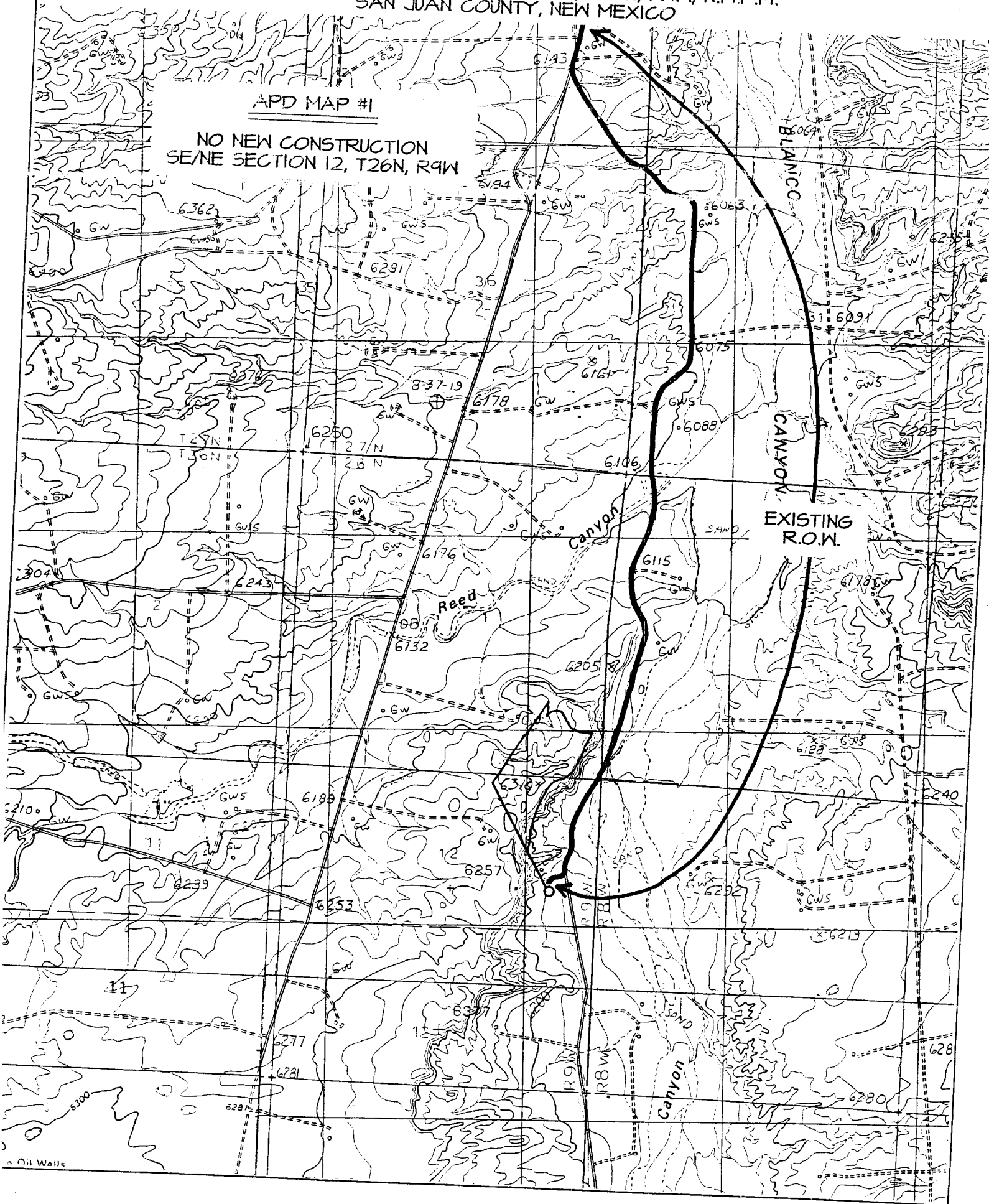


Note: Contractor should call One-Call for location of any marked or unmarked buried pipelines or cables on well pad and/or access road at least two (2) working days prior to construction.

BURLINGTON RESOURCES OIL & GAS COMPANY HUERFANITO UNIT #41E  
1915' FNL & 810' FEL, SECTION 12, T26N, R9W, N.M.P.M.  
SAN JUAN COUNTY, NEW MEXICO

APD MAP #1

NO NEW CONSTRUCTION  
SE/NE SECTION 12, T26N, R9W



**Directions from Intersection of US Hwy 550 & US Hwy 64 in Bloomfield, NM**

**to Burlington Resources Oil & Gas Company Huerfanito Unit #91E**

**1915' FNL & 810' FEL, Section 12, T26N, R9W, San Juan County, NM**

From the intersection of US Hwy 550 & US Hwy 64 in Bloomfield, NM, travel Easterly on US Hwy 64 for 10.5 miles across the San Juan River to Largo Road (County Road #4450);

Go right (South-easterly) on County Road #4450 for 3.7 miles to fork in road;

Go right (South-easterly) remaining on County Road #4450 across 5-mile bridge for 0.6 miles to fork in road;

Go left (South-easterly) remaining on County Road #4450 for 2.9 miles to fork in road;

Go right (South-westerly) on County Road #7007 for 5.1 miles to fork in road;

Go left which is straight (Southerly) remaining on County Road #7007 for 3.6 miles to fork in road;

Go left (South-easterly) for 2.9 miles to fork in road;

Go right (Westerly) for 0.1 miles to staked location which overlaps an existing wellpad.

35

36

31

**Enterprise Field Service****B.R.O.G.- Huerfanito Unit #91E****1915FNL, 780FEL Sec. 12 T26N., R09W****Surface owner: FEE; Lydia A. Chavez Lateral C-21****Tie's to: B.R.O.G.- Huerfanito Unit #66 (MC #92991/70893)****Survey footage: 221ft San Juan County, NM****Note: Center line survey on existing location,  
and location not built.**

CANYON

2

**36°30'16" N. 10°44'03" W**

7

11

12

14

13

18

Canyon

Blanco

MN  
11°0 5 1 MILE  
0 500 FEET 0 500 METERS

Printed from TOPO! ©2001 National Geographic Holdings (www.topo.com)