

District I
1625 N. French Dr., Hobbs, NM 88240
District II
811 South First, Artesia, NM 88210
District III
1000 Rio Brazos Rd., Aztec, NM 87410
District IV
1220 S. St. Francis Dr., Santa Fe, NM 87505

State of New Mexico
Energy, Minerals & Natural Resources Department

Form C-102
Revised August 15, 2000

OIL CONSERVATION DIVISION
1220 South St. Francis Dr.
Santa Fe, NM 87505

Submit to Appropriate District Office
State Lease - 4 Copies
Fee Lease - 3 Copies

WELL LOCATION AND ACREAGE DEDICATION PLAT



AMENDED
REPORT

¹ API Number 30-045-26180	² Pool Code 71280	³ Pool Name AZTEC PICTURED CLIFFS
⁴ Property Code 22658	⁵ Property Name BACA GAS COM A	⁶ Well Number 1A
⁷ OGRID No. 167067	⁸ Operator Name XTO Energy, Inc.	⁹ Elevation 5830'

¹⁰ Surface Location

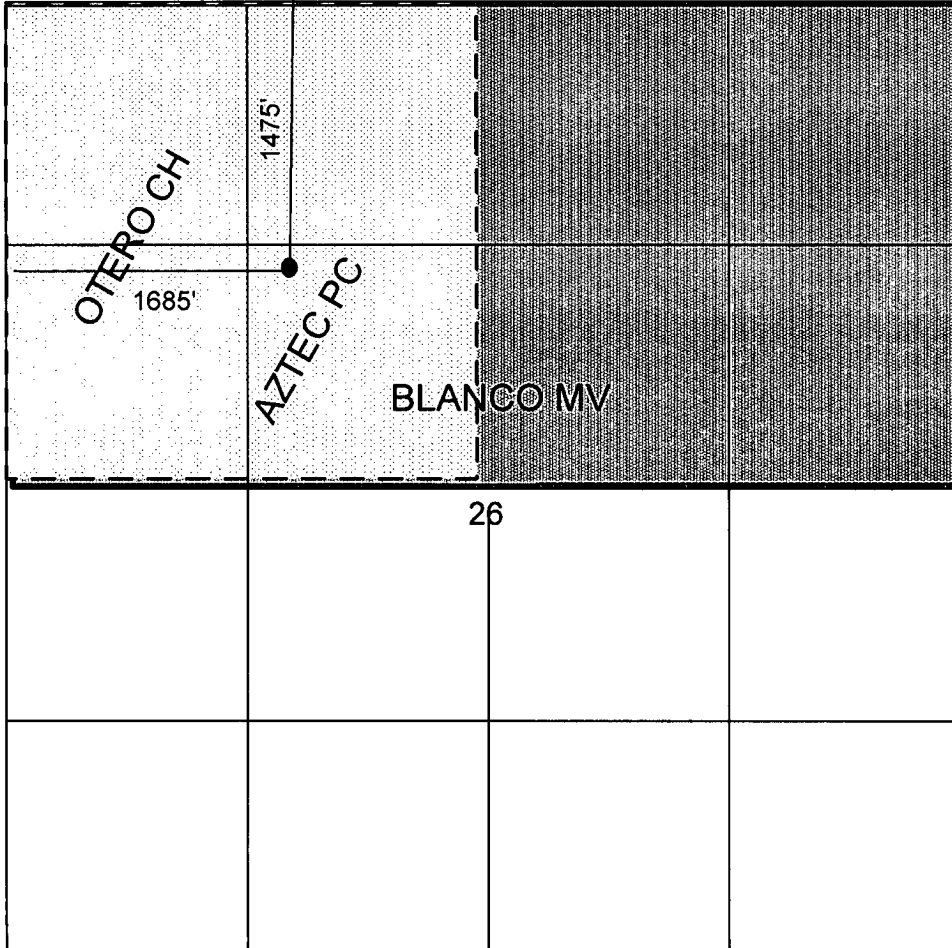
UL or lot no.	Section	Township	Range	Lot Idn	Feet from the	North/South line	Feet from the	East/West line	County
F	26	29N	10W		1475	NORTH	1685	WEST	SAN JUAN

¹¹ Bottom Hole Location If Different From Surface

UL or lot no.	Section	Township	Range	Lot Idn	Feet from the	North/South line	Feet from the	East/West line	County

¹² Dedicated Acres ac	¹³ Joint or Infill	¹⁴ Consolidation Code	¹⁵ Order No.
-------------------------------------	-------------------------------	----------------------------------	-------------------------

NO ALLOWABLE WILL BE ASSIGNED TO THIS COMPLETION UNTIL ALL INTERESTS HAVE BEEN CONSOLIDATED OR A NON-STANDARD UNIT HAS BEEN APPROVED BY THE DIVISION



OPERATOR CERTIFICATION

I hereby certify that the information contained herein is true and complete to the best of my knowledge and belief

Lorri D. Bingham
Signature

Lorri D. Bingham

Printed Name

Regulatory Compliance Tech

Title

8/24/06

Date

SURVEYOR CERTIFICATION

I hereby certify that the well location shown on this plat was plotted from field notes of actual surveys made by me or under my supervision, and that the same is true and correct to the best of my belief.

3-21-1985

Date of Survey

Original Survey Signed By:

JOHN A. VUKONICH

14831

Certificate Number

B