

District I
1625 N. French Dr., Hobbs, NM 88240
District II
1301 W. Grand Avenue, Artesia, NM 88210
District III
1000 Rio Brazos Rd., Aztec, NM 87410
District IV
1220 S. St. Francis Dr., Santa Fe, NM 87505

State of New Mexico
Energy, Minerals & Natural Resources Department
OIL CONSERVATION DIVISION
1220 South St. Francis Dr.
Santa Fe, NM 87505

Form C-102
Revised June 10, 2003
Submit to Appropriate District Office
State Lease - 4 Copies
Fee Lease - 3 Copies

☐ AMENDED REPORT

WELL LOCATION AND ACREAGE DEDICATION PLAT

* API Number 30-039-29876		* Pool Code 72319	* Pool Name BLANCO MESA VERDE
* Property Code 17029	* Property Name JICARILLA 93		* Well Number 14
* OGRID No. 120782	* Operator Name WILLIAMS PRODUCTION COMPANY		* Elevation 7155

10 Surface Location

UL or lot no.	Section	Township	Range	Lot Idn	Feet from the	North/South line	Feet from the	East/West line	County
H	32	27N	3W		1935	NORTH	105	EAST	RIO ARriba

11 Bottom Hole Location If Different From Surface

UL or lot no.	Section	Township	Range	Lot Idn	Feet from the	North/South line	Feet from the	East/West line	County

* Dedicated Acres 320 Ac E/2	* Joint or Infill	* Consolidation Code	* Order No.
--	-------------------	----------------------	-------------

NO ALLOWABLE WILL BE ASSIGNED TO THIS COMPLETION UNTIL ALL INTERESTS HAVE BEEN CONSOLIDATED OR A NON-STANDARD UNIT HAS BEEN APPROVED BY THE DIVISION

5288.84	5274.27	5283.80	5283.47	17 OPERATOR CERTIFICATION I hereby certify that the information contained herein is true and complete to the best of my knowledge and belief. Signature: <u>Larry Higgins</u> Printed Name: <u>Larry Higgins</u> Title and E-mail Address: <u>105 DRILLING CORP</u> Date: <u>4-12-06</u>
				18 SURVEYOR CERTIFICATION I hereby certify that the well location shown on this plat was plotted from field notes of actual surveys made by me or under my supervision, and that the same is true and correct to the best of my belief. Date of Survey: <u>AUGUST 26 B. 2005</u> Signature and Seal of Professional Surveyor: <u>[Signature]</u> Certificate Number: <u>9672</u>

8

Submit 3 Copies To Appropriate District Office
District I
1625 N. French Dr., Hobbs, NM 88240
District II
1301 W. Grand Ave., Artesia, NM 88210
District III
1000 Rio Brazos Rd., Aztec, NM 87410
District IV
1220 S. St. Francis Dr., Santa Fe, NM 87505

State of New Mexico
Energy, Minerals and Natural Resources

Form C-103
May 27, 2004

OIL CONSERVATION DIVISION
1220 South St. Francis Dr.
Santa Fe, NM 87505

SUNDRY NOTICES AND REPORTS ON WELLS (DO NOT USE THIS FORM FOR PROPOSALS TO DRILL OR TO DEEPEN OR PLUG BACK TO A DIFFERENT RESERVOIR. USE "APPLICATION FOR PERMIT" (FORM C-101) FOR SUCH PROPOSALS.)		WELL API NO.
1. Type of Well: Gas Well <input checked="" type="checkbox"/>		5. Indicate Type of Lease Federal (Indian)
2. Name of Operator Williams Production Company		6. State Oil & Gas Lease No.
3. Address of Operator P.O. Box 640, Aztec, NM 87410		7. Lease Name or Unit Agreement Name Jicarilla 93
4. Well Location Unit Letter J : 1935 feet from the North line and 105 feet from the East line. Section 32 Township 27N Range 3W NMPM County Rio Arriba		8. Well Number #14
11. Elevation (Show whether DR, RKB, RT, GR, etc.) 7155' GR		9. OGRID Number 120782
Pit or Below-grade Tank Application <input checked="" type="checkbox"/>		
Pit type <u>Drilling</u> Depth to Groundwater <u>>100'</u> Distance from nearest fresh water well <u>>1000'</u> Distance from nearest surface water <u>>500'<1000'</u>		
Pit Liner Thickness: 12 mil Below-Grade Tank: Volume bbls; Construction Material		

12. Check Appropriate Box to Indicate Nature of Notice, Report or Other Data

NOTICE OF INTENTION TO:

PERFORM REMEDIAL WORK ☐ PLUG AND ABANDON ☐
TEMPORARILY ABANDON ☐ CHANGE PLANS ☐
PULL OR ALTER CASING ☐ MULTIPLE COMPL ☐

OTHER: ☐

SUBSEQUENT REPORT OF:

REMEDIAL WORK ☐ ALTERING CASING ☐
COMMENCE DRILLING OPNS. ☐ P AND A ☐
CASING/CEMENT JOB ☐

OTHER: ☐

13. Describe proposed or completed operations. (Clearly state all pertinent details, and give pertinent dates, including estimated date of starting any proposed work). SEE RULE 1103. For Multiple Completions: Attach wellbore diagram of proposed completion or recompletion.

Drilling/Completion pit to be located approximately 50-75 feet from well head. Pit multi-use drilling and completion to avoid additional site disturbance and pit will be considered out of service once production tubing set. Reserve pit to be constructed in accordance with NMOCD Interim Pit and Below-Grade Tank Guidelines



I hereby certify that the information above is true and complete to the best of my knowledge and belief. I further certify that any pit or below-grade tank has been/will be constructed or closed according to NMOCD guidelines ☐, a general permit ☐ or an (attached) alternative OCD-approved plan ☐.

SIGNATURE Larry Higgins TITLE Drilling COM DATE 4-12-05

Type or print name Larry Higgins E-mail address: larry.higgins@williams.com Telephone No. (970) 563-3308

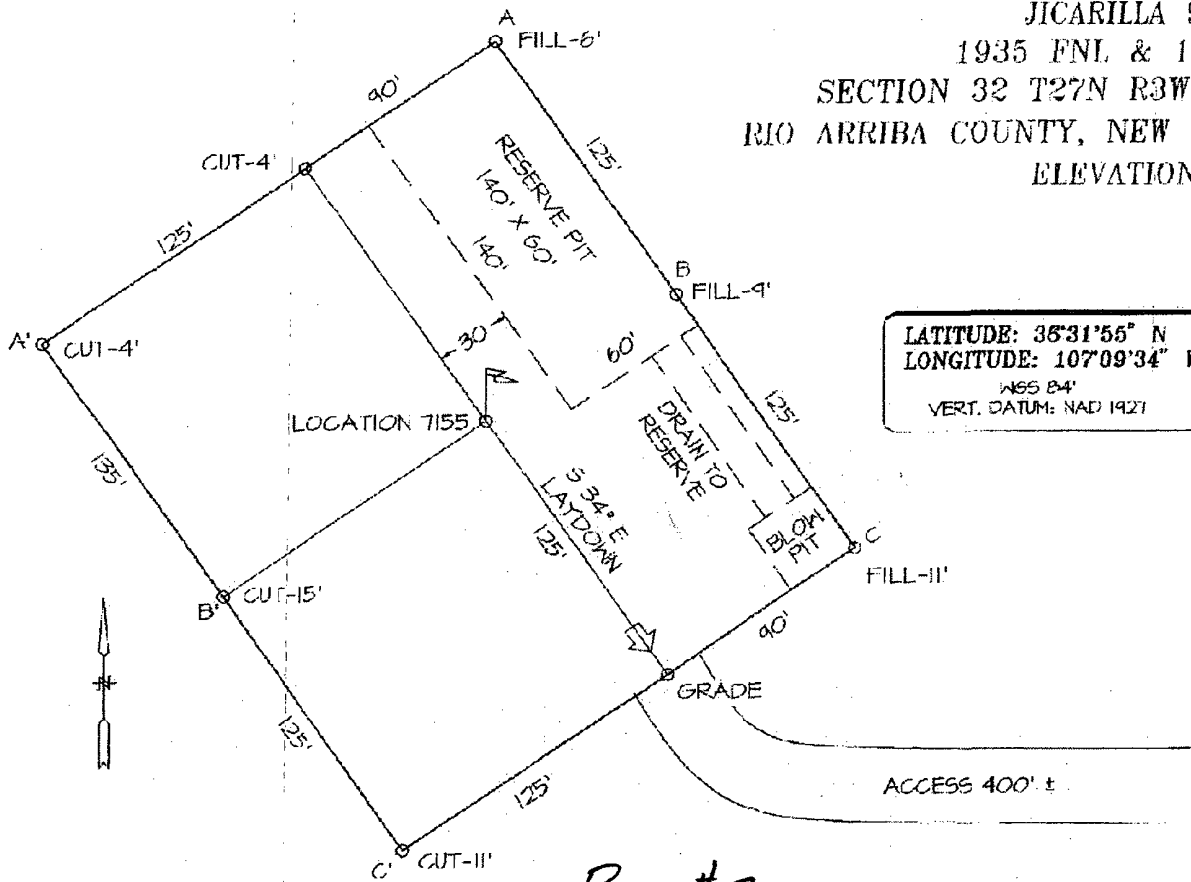
For State Use Only

DEPUTY OIL & GAS INSPECTOR, DIST. 8

SEP 15 2006

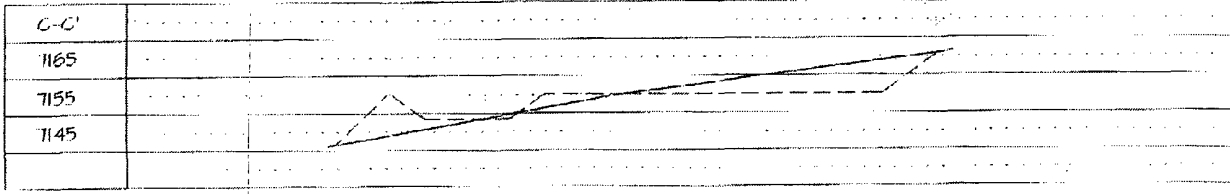
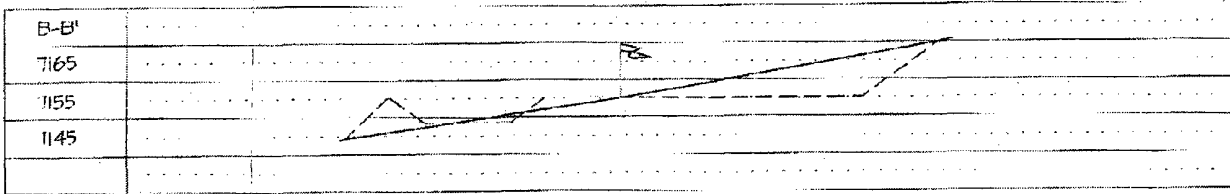
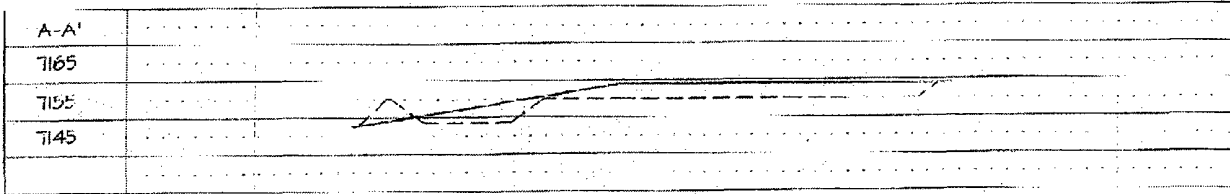
APPROVED BY: [Signature] TITLE _____ DATE _____

WILLIAMS PRODUCTION COMPANY
 JICARILLA 93 #11
 1935 FNL & 105 FEL
 SECTION 32 T27N R3W NMPM
 RIO ARriba COUNTY, NEW MEXICO
 ELEVATION: 7155



LATITUDE: 35°31'55" N
 LONGITUDE: 107°09'34" W
 WGS 84
 VERT. DATUM: NAD 1927

PLAT #2





WILLIAMS PRODUCTION COMPANY

Operations Plan

(Note: This procedure will be adjusted on site based upon actual conditions)

<u>DATE:</u>	4/12/2006	<u>FIELD:</u>	Blanco MV
<u>WELL NAME:</u>	Jicarilla 93 #14	<u>SURFACE:</u>	BOIA
<u>BH LOCATION:</u>	SENE Sec 32-27N-3W Rio Arriba, NM	<u>MINERALS:</u>	Jicarilla #93
<u>ELEVATION:</u>	7,155' GR	<u>LEASE #</u>	Jicarilla #93
<u>MEASURED DEPTH:</u>	6,494'		

I. GEOLOGY: Surface formation - San Jose

A. FORMATION TOPS: (KB)

Name	MD	Name	MD
Ojo Alamo	3,409	Cliff House	5,609
Kirtland	3,609	Menefee	5,739
Fruitland	3,679	Point Lookout	6,044
Picture Cliffs	3,904	Mancos	6,309
Lewis	4,124	TD	6,494
Huerfanito Bentonite	4,409		

B. MUD LOGGING PROGRAM: None

C. LOGGING PROGRAM: High Resolution Induction log from surface shoe to TD. GR and Density/ Neutron log over zones of interest. Onsite geologist will pick Density/ Neutron log intervals on logging runs.

D. NATURAL GAUGES: Gauge any noticeable increases in gas flow. Record all gauges in Tour book and on morning reports.

II. DRILLING

A. MUD PROGRAM: Clear water with benex to 7" casing point. Convert to a LSND mud to log and run pipe. Treat for lost circulation as necessary. Obtain 100% returns prior to cementing. Notify Engineering of any mud losses. Use air w/Air Hammer from 7 in. csg.to TD.

B. BOP TESTING: While drill pipe is in use, the pipe rams and the blind rams will be function tested once each trip. The anticipated reservoir is expected to be less than 1300 psi, so the BOPE will be tested to **250 psi (Low) for 5 minutes** and **1500 psi (High) for 10 minutes**. Utilize a BOPE Testing Unit with a recording chart and appropriate test plug for testing. The drum brakes will be inspected and tested each tour. **All tests and inspections will be recorded in the tour book as to time and results.**

III. MATERIALS**A. CASING PROGRAM:**

<u>CASING TYPE</u>	<u>HOLE SIZE</u>	<u>DEPTH (MD)</u>	<u>CASING SIZE</u>	<u>WT. & GRADE</u>
Surface	12-1/4"	+/- 300'	9-5/8"	36# K-55
Intermediate	8-3/4"	+/- 4,289'	7"	20# K-55
Prod. Liner	6-1/4"	+/- 4,189'-6,472'	4-1/2"	10.5# K-55

B. FLOAT EQUIPMENT:

1. SURFACE CASING: 9-5/8" notched regular pattern guide shoe. Run (1) standard centralizer on each of the bottom (3) joints of Surface Casing.
2. INTERMEDIATE CASING: 7" cement nose guide shoe with a self-fill insert float. Place float collar one joint above the shoe. Install (1) Turbulent centralizer on each of the bottom (3) joints and one standard centralizer every (3) joints to 2,500 ft. Run (1) Turbulent centralizer at 2,700 ft., 2,500 ft., 2,300ft., 2,000ft., 1,500 ft., and 1,000 ft. (NTL-FRA 90-1).
3. PRODUCTION CASING: 4-1/2" & 5-1/2" whirler type cement nose guide shoe with a latch collar on top of 20' bottom joint. Place marker joint above 5,400'. Place centralizers as needed across selected production intervals.

C. CEMENTING:

(Note: Volumes may be adjusted onsite due to actual conditions)

1. SURFACE: Slurry: 150sx (205 cu.ft.) of "Type III" + 2% CaCl₂ + 1/4 # of cello-flake/sk (Yield = 1.39 cu.ft./sk, Weight = 14.5 #/gal.). The 100% excess should circulate cement to the surface. WOC 12 hours. Test csg to 1500psi.
2. INTERMEDIATE: Lead - 550 sx (1,146) cu.ft.) of "Type III" 65/35 poz with 8% gel, 1% CaCl₂ and 1/4# cello-flake/sk (Yield = 2.09 cu.ft./sk, Weight = 12.1 #/gal.). Tail - 50 sx (70cu.ft.) of "Type III" with 1/4# cello-flake/sk, and 1% CaCl₂ (Yield = 1.4 cu.ft./sk, Weight = 14.5#/gal.). Use **100% excess in Lead Slurry** to circulate to surface. **No excess in Tail Slurry**. Total volume = 1,216 cu.ft. Bump Plug to 1,500 psi. Notify engineering if cement is not circulated to surface.
3. PRODUCTION LINER: 10 bbl Gelled Water space. Lead: 50sx (130ft³) of Premium Light HS + 1% FL-52 + .2% CD-32, 0.1% R-3, 3 #/sk CSE. (Yield = 2.59 cu.ft./sk, Weight = 11.6 #/gal.). Tail: 100 sx (215 ft³) of Premium Light HS + 1% FL-52 + .2% CD-32, 0.1% R-3, 3 #/sk CSE, 1/4 #/sk cello flake and 4% Phenoseal. (Yield = 2.15 ft³/sk, Weight = 12.3 #/gal.). Displace cement at a minimum of 8 BPM. The 20% excess in lead and tail should cover 100 ft into intermediate casing. Total volume 330 ft³. WOC 12 hours

IV COMPLETION**A. CBL**

1. Run Cement Bond Log across all intervals to be perforated and find Top of Cement behind all casing strings if cement is not circulated to surface.

B. PRESSURE TEST

1. Pressure test 7" & 4-1/2" casing to 3300# for 15 minutes.

C. STIMULATION

1. Perforate the Point Lookout as determined from the open hole logs.
2. Stimulate with approximately 9,300# of 14/30 LiteProp™ sand in slick water.
3. Isolate Point Lookout with a CIBP.
4. Perforate the Menefee/Cliff House as determined from the open hole logs.
5. Stimulate with approximately 9,300# of 14/30 LiteProp™ sand in slick water.
6. Test each zone before removing bridge plugs.

D. RUNNING TUBING

1. Mesa Verde: Run 2-3/8", 4.7#, J-55, EUE tubing with a SN (1.91" ID) on top of bottom joint. Land tubing approximately 25' above the bottom Point Lookout perforation.

for Gary Sizemore
Gary Sizemore
Sr. Drilling Engineer

Well Control Equipment Schematic for 2M Service

Attachment to Drilling Technical Program

Exhibit #1 Typical BOP setup

Location: San Juan Basin, New Mexico

Date: August 20, 2001

By: John Thompson (Walsh E&P)

