

**UNITED STATES  
DEPARTMENT OF THE INTERIOR  
BUREAU OF LAND MANAGEMENT**

## Sundry Notices and Reports on Wells

1. **Type of Well**  
GAS

2. **Name of Operator**  
**BURLINGTON**  
RESOURCES OIL & GAS COMPANY LP

3. **Address & Phone No. of Operator**

PO Box 4289, Farmington, NM 87499 (505) 326-9700

4. **Location of Well, Footage, Sec., T, R, M**  
Sec., T--N, R--W, NMPM

Unit C (NENW), 380' FNL & 1758' FWL, Sec. 34, T31N, R13W NMPM  
230

Lease Number  
SF-078463-A  
If Indian, All. or  
Tribe Name

Unit Agreement Name

8. **Well Name & Number**

9. **Lea Federal #1E  
API Well No.**

10. **Field and Pool**

11. **PC/DK  
County and State**  
San Juan, NM

**12. CHECK APPROPRIATE BOX TO INDICATE NATURE OF NOTICE, REPORT, OTHER DATA**

**Type of Submission:**

- ☐ Notice of Intent  
☒ Subsequent Report  
☐ Final Abandonment

**Type of Action:**

- ☐ Abandonment  
☐ Plugging  
☐ Casing Repair  
☐ Altering Casing  
☐ Change of Plans  
☐ Non-Routine Fracturing  
☐ Water Shut-off  
☐ Conversion to Injection

☒ Other : Plug Back PC & TA *DK Wellbore*

**13. Describe Proposed or Completed Operations**

Attached is a subsequent sundry for the PB of the PC & the TA of the DK. Burlington Resources would like to keep the TA status for the DK for as long as possible while it is in review.

TA approved until 9/11/07

**14. I hereby certify that the foregoing is true and correct.**

Signed *Philana Thompson* Philana Thompson Title Regulatory Tech Date 9/11/06

(This space for Federal or State Office use)

APPROVED BY \_\_\_\_\_ Title \_\_\_\_\_ Date \_\_\_\_\_

CONDITION OF APPROVAL, if any:

Title 18 U.S.C. Section 1001, makes it a crime for any person knowingly and willfully to make any department or agency of the United States any false, fictitious or fraudulent statements or representations as to any matter within its jurisdiction.

**ACCEPTED FOR RECORD**

SEP 12 2006

FARMINGTON FIELD OFFICE

**NMOCD**

B 9/28

*Sakota P&A 9-1-06  
Wellbore TA eff 9-1-06 pool 71629  
per Steve Hayden 9/28/06*

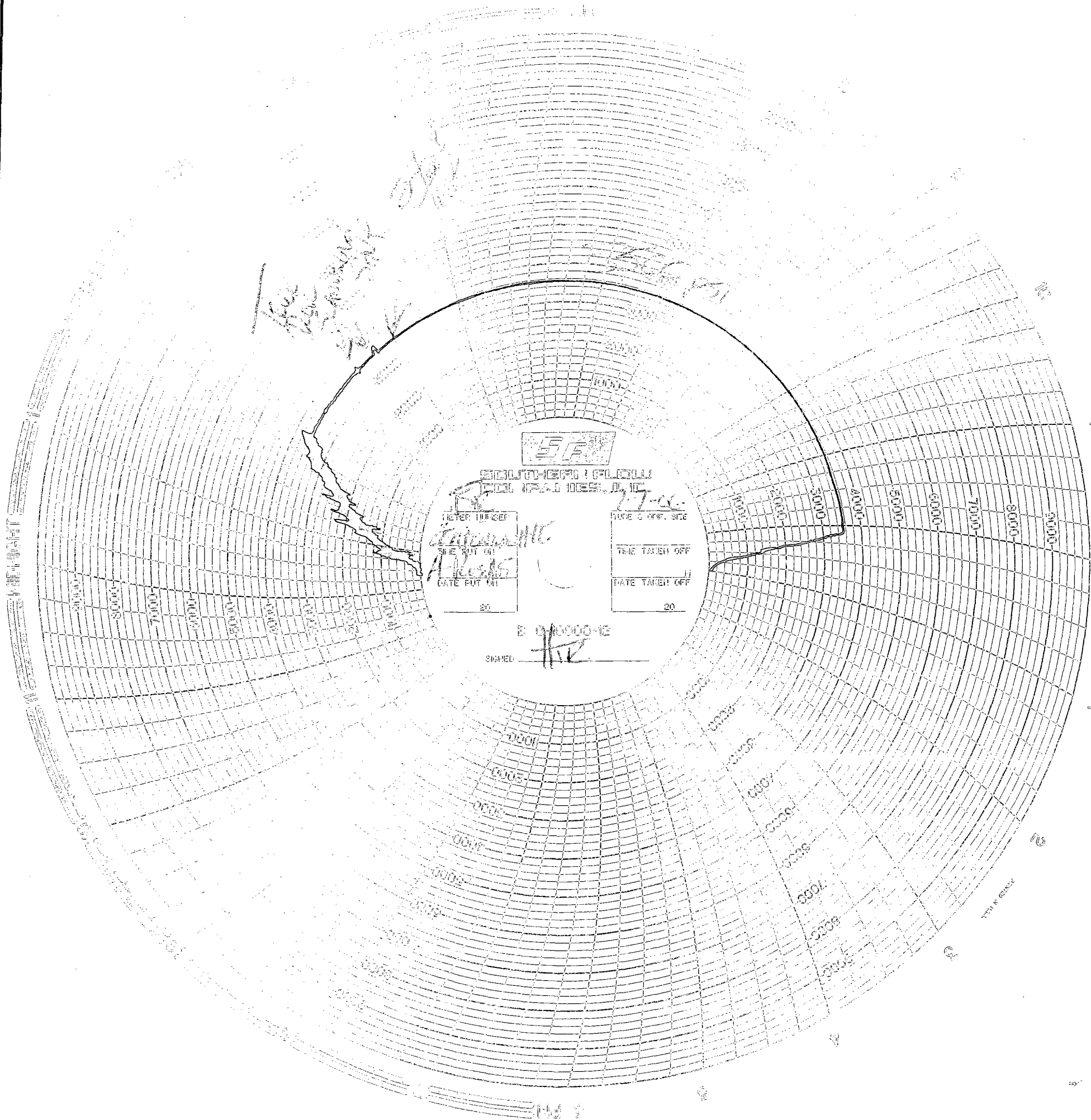
Lea Federal #1E  
API - 30-045-25980 Lease - SF-078463-A  
380' FNL, 1758' FWL Sec. 34, T31N, R13W  
San Juan County

Details of Procedure used to PB the PC & TA the DK

6/22/06 MIRU A-Plus #5. ND WH, NU BOP. Blow well. Unseat & remove tbg hanger. TOOH w/tbg. RU WL. TIH w/ CIBP @ 6434'. TIH land tbg., unload well w/ air. Flow test well, making 14 bbls of water. Pull above perfs. Blow well w/ air, recovered 38 bbls overnight, recovered 18 bbls in 1 hour, blowing, natural flow for 2 hours, recovered 27 bbls, unload 15 bbls circ., unload 21 bbls, 6 bbls circ. Ran pitot 0 psi in  $\frac{1}{2}$  hour, 0 psi in 1 hour. Unloaded 20 bbls, recovered 6 bbls circ. Unload hole w/ air, unload 34 bbls, 12 bbls circ. in 1 hour. Natural flow. Unload 28 bbls, 13 bbls circ. in 1 hour. Natural flow. Unload 18 bbls, 10 bbls circ. in 1 hour. Natural flow. Unloaded 22 bbls, 6 bbls circ. in 1 hour. Unload 34 bbls w air, circ. 5 bbls in 1 hour. TOH, TIH w/ packer & set @ 6423'. Load tbg. & PT CIBP to 500 psi, leaking. TIH tagged CIBP @ 6434', PT CIBP to 500 psi, leaking. Release pkr., pull above perfs @ 6240', load backside, PT csg to 500 psi, holding. Release pkr, TOH. RU W/L, RIH w/ dump bailer, dumped 15' cmnt on top of CIBP. RD W/L. 6/31/06 TIH w/ tbg., tagged @ 6419', pull up 1 jt. To 6388', unload w/ air. 36 bbls, +13 bbls circ. after 1 hour, natural flow for 2 hours, unload 35 bbls, +12 bbls circ. after 1 hour, natural flow 2 hours. Unload 20 bbls, +6 bbls circ. after 1 hour. 7/4/06 unload well w/ air, 18 bbls unloaded, +12 bbls circ. after 1 hour. Unload 14 bbls, +10 bbls circ. after 1 hour. Unload 27 bbls, +6 bbls circ. after 1 hour. 7/6/06 Henry Villanueva w/ the OCD & Steve Mason w/ the BLM were contacted regarding failed attempt to isolate leak. Verbal permission was given by both agencies to TA the DK & PB the PC. 7/6/06 begin TA operations. TOH w/ tbg., TIH w/ CR & set @ 6260'. CR would not set, move up hole, didn't set. RIH 2 jts., would not set. TIH tagged cmnt. CR & set @ 6419', TOH. RU W/L, RIH w/ CIBP set @ 6242'. TIH open-ended, load & roll hole. 7/7/06 PT csg. To 800 psi/ for 30 min.. PLUG #1- 6242' to 6092', 11 sx class 3 cmnt (1.32 yield, 14.8 #/gal, 3 bbls slurry, 2 bbls of water mix) displaced 24 bbls. PLUG #2- 5474' to 5322', 11 sx class 3 cmnt. (1.32 yield, 14.8 #/gal, 3 bbls slurry, 2 bbls of water mix) displaced 20 bbls. Shot 3 squeeze holes @ 3373' & at 2200 psi was unable to establish injection rate. Contacted Steve Mason w/ BLM & Henry V. w/ OCD & rcvd permission to set a balance plug across this area.

1728-3323  
Pictured Cliffs Cliff House  
3323-4122  
PLUG #3- 3429' to 3223', 14 sx class 3 cmnt. (1.32 yield, 14.8 #/gal, 6.3 gal/sx H2O, 3 bbls slurry, 2 bbls mix slurry). RIH set CIBP @ 1950', load hole for WSI, PT csg. & CIBP to 3500 pis, holding. NDBOP, NUWH. 7/10/06 RD & released rig @ 08:00 hrs.

Wellbore will be retained in TA status in pool 71629 (Basin Fruitland Coal) per Steve H. to maintain compliance of well. There is not an establish pool in the Pictured Cliffs for this area.



SOUTHERN FLORIDA

SIGNED

27-06

H. E.

NEVER TAKER

DATE PUT ON

DATE TAKEN OFF

DATE TAKEN OFF