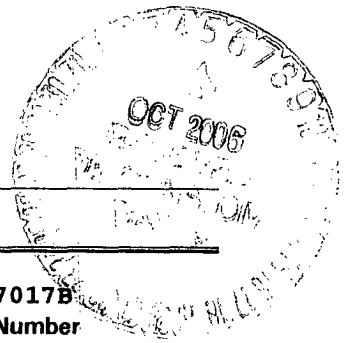


UNITED STATES
DEPARTMENT OF THE INTERIOR
BUREAU OF LAND MANAGEMENT



APPLICATION FOR PERMIT TO DRILL, DEEPEN, OR PLUG BACK

1a. Type of Work
DRILL

2000 SEP 6 PM 3 27

5. Lease Number
NMSF-047017B
Unit Reporting Number

1b. Type of Well
GAS

6. If Indian, All. or Tribe

2. Operator
BURLINGTON
RESOURCES Oil & Gas Company, LP

7. Unit Agreement Name

3. Address & Phone No. of Operator
PO Box 4289, Farmington, NM 87499

(505) 326-9700

8. Farm or Lease Name
Angel Peak B
9. Well Number
#20E

4. Location of Well
Unit I (NESE), 1880' FSL & 690' FEL,

Latitude 36° 64574'N
Longitude 107° 94854'W

10. Field, Pool, Wildcat
Basin Dakota

11. Sec., Twn, Rge, Mer. (NMPM)
I Sec. 24, T28N, R11W
API # 30-045-33929

14. Distance in Miles from Nearest Town

12. County
San Juan
13. State
NM

15. Distance from Proposed Location to Nearest Property or Lease Line
690'

16. Acres in Lease

17. Acres Assigned to Well
320 E/2 - DK

18. Distance from Proposed Location to Nearest Well, Drlg, Compl, or Applied for on this Lease
Twinned wthe the Angel Peak B #48

19. Proposed Depth
6519'

20. Rotary or Cable Tools
Rotary

21. Elevations (DF, FT, GR, Etc.)
5912' GL

22. Approx. Date Work will Start

23. Proposed Casing and Cementing Program
See Operations Plan attached

24. Authorized by: Patsy Clayton
Sr. Regulatory Specialist

Date 9/6/06

PERMIT NO.

APPROVAL DATE

APPROVED BY D. Manteiga

TITLE ARM

DATE 10/5/06

Archaeological Report attached

Threatened and Endangered Species Report attached

NOTE: This format is issued in lieu of U.S. BLM Form 3160-3

Title 18 U.S.C. Section 1001, makes it a crime for any person knowingly and willfully to make to any department or agency of the United States any false, fictitious or fraudulent statements or presentations as to any matter within its jurisdiction.

This action is subject to technical and
procedural review pursuant to 43 CFR 3165.3
and appeal pursuant to 43 CFR 3165.4

NMOC

DRILLING OPERATIONS AUTHORIZED ARE
SUBJECT TO COMPLIANCE WITH ATTACHED
"GENERAL REQUIREMENTS".

DISTRICT I
1625 N. French Dr., Hobbs, N.M. 88240

DISTRICT II
1301 W. Grand Ave., Artesia, N.M. 88210

DISTRICT III
1000 Rio Brazos Rd., Aztec, N.M. 87410

DISTRICT IV
1220 South St. Francis Dr., Santa Fe, NM 87505

State of New Mexico
Energy, Minerals & Natural Resources Department

OIL CONSERVATION DIVISION

1220 South St. Francis Dr.
Santa Fe, NM 87505

2006 SEP 6 PM 3 27

Form C-102

Revised October 12, 2005

Submit to Appropriate District Office

State Lease - 4 Copies

Fee Lease - 3 Copies

☐ AMENDED REPORT

RECEIVED
WELL LOCATION AND ACREAGE DEDICATION PLAT

¹ API Number 30-045-33929	² Pool Code 71599	³ Pool Name Basin Dakota
⁴ Property Code 6788	⁵ Property Name ANGEL PEAK B	⁶ Well Number 20E
⁷ OGRID No. 14538	⁸ Operator Name BURLINGTON RESOURCES OIL & GAS COMPANY LP	⁹ Elevation 5912

¹⁰ Surface Location

UL or lot no.	Section	Township	Range	Lot Idn	Feet from the	North/South line	Feet from the	East/West line	County
I	24	28-N	11-W		1880	SOUTH	690	EAST	SAN JUAN

¹¹ Bottom Hole Location If Different From Surface

UL or lot no.	Section	Township	Range	Lot Idn	Feet from the	North/South line	Feet from the	East/West line	County
I									
¹² Dedicated Acres DK 320.00ac E2			¹³ Joint or Infill		¹⁴ Consolidation Code		¹⁵ Order No.		

NO ALLOWABLE WILL BE ASSIGNED TO THIS COMPLETION UNTIL ALL INTERESTS HAVE BEEN CONSOLIDATED
OR A NON-STANDARD UNIT HAS BEEN APPROVED BY THE DIVISION

16

		USA SF-047017-B	
24		FD 2 1/2" BC 1913 GLO	
LAT: 36.64574° N. (NAD 83) LONG: 107.94854° W. (NAD 83) LAT: 36°38.7439' N. (NAD 27) LONG: 107°56.8751' W. (NAD 27)		690'	
		1880'	
FD 2 1/2" BC 1913 GLO		S 89°53'28" W 2639.97' (M) FD 3 1/2" BC 1913 GLO	

17 OPERATOR CERTIFICATION

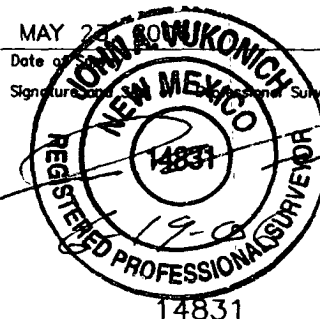
I hereby certify that the information contained herein is true and complete to the best of my knowledge and belief, and that this organization either owns a working interest or unleased mineral interest in the land including the proposed bottom hole location or has a right to drill this well at this location pursuant to a contract with an owner of such a mineral or working interest, or to a voluntary pooling agreement or a compulsory pooling order heretofore entered by the division.

Patsy Clugston
Signature Date
Patsy Clugston / Sr. Regulator
Printed Name Specialist

18 SURVEYOR CERTIFICATION

I hereby certify that the well location shown on this plat was plotted from field notes of actual surveys made by me or under my supervision, and that the same is true and correct to the best of my belief.

MAY 27
Date of Survey
Signature of Professional Surveyor



Certificate Number

Office

Energy, Minerals and Natural Resources

May 27, 2004

District I

1625 N. French Dr., Hobbs, NM 88240

District II

1301 W. Grand Ave., Artesia, NM 88210

District III

1000 Rio Brazos Rd., Aztec, NM 87410

District IV

1220 S. St. Francis Dr., Santa Fe, NM 87505

OIL CONSERVATION DIVISION

1220 South St. Francis Dr.

Santa Fe, NM 87505

WELL API NO.

30-045-

5. Indicate Type of Lease

STATE ☐FEE ☐

6. State Oil & Gas Lease No.

SF-047017-B

7. Lease Name or Unit Agreement Name

Angel Peak B

8. Well Number

#20E

9. OGRID Number

14538

10. Pool name or Wildcat

Dakota

SUNDRY NOTICES AND REPORTS ON WELLS

(DO NOT USE THIS FORM FOR PROPOSALS TO DRILL OR TO DEEPEN OR PLUG BACK TO A DIFFERENT RESERVOIR. USE "APPLICATION FOR PERMIT" (FORM C-101) FOR SUCH PROPOSALS.)

1. Type of Well:

Oil Well ☐Gas Well ☒

Other

2. Name of Operator

BURLINGTON RESOURCES OIL & GAS COMPANY LP

3. Address of Operator

3401 E. 30TH STREET, FARMINGTON, NM 87402

4. Well Location

Unit Letter I : 1880' feet from the South line and 890' feet from the East line
Section 24 Township 28N Rng 11W NMPM County San Juan

11. Elevation (Show whether DR, RKB, RT, GR, etc.)

5912'

Pit or Below-grade Tank Application☐ or Closure ☐

Pit type

new drill

Depth to Groundwater

>100'

Distance from nearest fresh water well

>1000'

Distance from nearest surface water

>1000'

Pit Liner Thickness:

N/A

mil

Below-Grade Tank:

Volume

bbls;

Construction Material

12. Check Appropriate Box to Indicate Nature of Notice, Report or Other Data**NOTICE OF INTENTION TO:**PERFORM REMEDIAL WORK ☐TEMPORARILY ABANDON ☐PULL OR ALTER CASING ☐PLUG AND ABANDON ☐CHANGE PLANS ☐MULTIPLE COMPL ☐

OTHER:

New Drill Pit ☒**SUBSEQUENT REPORT OF:**REMEDIAL WORK ☐COMMENCE DRILLING OPNS. ☐CASING/CEMENT JOB ☐ALTERING CASING ☐P AND A ☐OTHER: ☐

13. Describe proposed or completed operations. (Clearly state all pertinent details, and give pertinent dates, including estimated date of starting any proposed work). SEE RULE 1103. For Multiple Completions: Attach wellbore diagram of proposed completion or recompletion.

New Drill, Unlined:

Burlington Resources proposes to construct a new drilling pit and an associated vent/flare pit. Based on Burlington's interpretation of the Ecosphere's risk ranking criteria, the new drilling pit and vent/flare pit will be an unlined pit as detailed in Burlington's Revised Drilling / Workover Pit Construction / Operation Procedures dated November 11, 2004 on file at the NMOCD office. A portion of the vent/flare pit will be designed to manage fluids, and that portion will be unlined, as per the risk ranking criteria. Burlington Resources anticipates closing these pits according to the Drilling / Workover Pit Closure Procedure dated August 2, 2004 on file at the NMOCD office.

I hereby certify that the information above is true and complete to the best of my knowledge and belief. I further certify that any pit or below-grade tank has been/will be constructed or closed according to NMOCD guidelines ☐, a general permit ☒ or an (attached) alternative OCD-approved plan ☐.

SIGNATURE

TITLE

Sr. Regulatory Specialist

DATE

8/18/2006

Type or print name

Patsy Clugston

E-mail address:

pclugston@br-inc.com

Telephone No.

505-326-9581

For State Use Only

APPROVED BY

TITLE

DEPUTY OIL & GAS INSPECTOR, DIST. 5

DATE

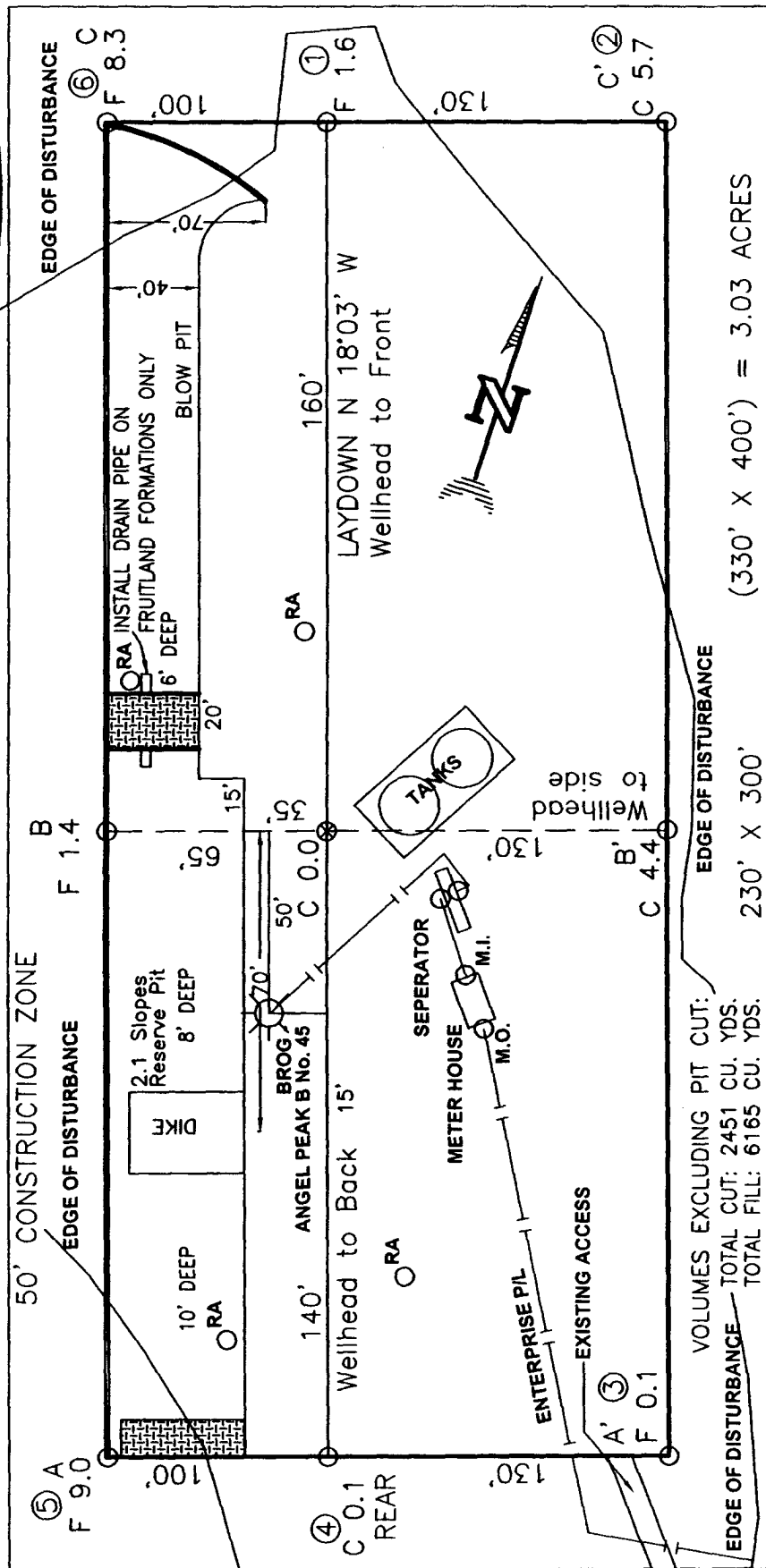
OCT 05 2006

Conditions of Approval (if any):

GROUND ELEVATION: 5912, DATE: MAY 23, 2006

NAD 83
LAT. = 36.64574° N
LONG. = 107.94854° W

NAD 27
LAT. = 36°38.7439' N
LONG. = 107°56.8751' W




RESERVE PIT DIKE: TO BE 8' ABOVE DEEP SIDE (OVERFLOW - 3' WIDE AND 1' ABOVE SHALLOW SIDE).
OVERFLOW PIPE: OVERFLOW PIPE HALFWAY BETWEEN TOP AND BOTTOM AND TO EXTEND OVER PLASTIC LINER AND INTO BLOW PIT.

NOTE: DAGGETT ENTERPRISES, INC. IS NOT LIABLE FOR UNDERGROUND UTILITIES OR PIPELINES. NEW MEXICO ONE CALL TO BE NOTIFIED 48 HOURS PRIOR TO EXCAVATION OR CONSTRUCTION.

NOTE: ESTIMATED VOLUMES CALCULATED BY AVERAGE END AREA AT CROSS-SECTION SHOWN

NOTE: CONTRACTOR SHOULD CALL ONE-CALL FOR LOCATION OF ANY MARKED OR UNMARKED BURIED PIPELINES OR CABLES ON WELL PAD AND OR ACCESS ROAD AT LEAST TWO (2) WORKING DAYS PRIOR TO CONSTRUCTION.

REVISION	DATE	REVISED BY:
		
<p>Daggett Enterprises, Inc. Surveying and Oil Field Services P. O. Box 15068 • Farmington, NM 87401 Phone (505) 326-1772 • Fax (505) 326-6019 NEW MEXICO L.S. 14831</p>		
DRAWN BY: A.C.	TABLE: BR339PLA	DATE: 06/09/08
ROOM: BR339		

BURLINGTON RESOURCES OIL & GAS COMPANY LP

ANGEL PEAK B No. 20E, 1880 FSL 690 FEL
SECTION 24, T-28-N, R-11-W, N.M.P.M., SAN JUAN COUNTY, NEW MEXICO
GROUND ELEVATION: 5912, DATE: MAY 23, 2006

NAD 83
LAT. = 36.64574° N
LONG. = 107.94854° W
NAD 27
LAT. = 36°38.7439' N
LONG. = 107°56.8751' W

ELEV. A-A'

C/L

5920									
5910									
5900									
5890									

ELEV. B-B'

C/L

5920									
5910									
5900									
5890									


ELEV. C-C'

C/L

5920									
5910									
5900									
5890									

NOTE: DAGGETT ENTERPRISES, INC. IS NOT LIABLE FOR UNDERGROUND UTILITIES OR PIPELINES. NEW MEXICO ONE CALL TO BE NOTIFIED 48 HOURS PRIOR TO EXCAVATION OR CONSTRUCTION.

NOTE: CONTRACTOR SHOULD CALL ONE-CALL FOR LOCATION OF ANY MARKED OR UNMARKED BURIED PIPELINES OR CABLES ON WELL PAD AND OR ACCESS ROAD AT LEAST TWO (2) WORKING DAYS PRIOR TO CONSTRUCTION.



Daggett Enterprises, Inc.
Surveying and Oil Field Services
P. O. Box 15068 • Farmington, NM 87401
Phone (505) 326-1772 • Fax (505) 326-6019
NEW MEXICO U.S. 14831

DRWN BY: A.G.
DATE: 06/08/06

REVISION: _____
DATE: _____
REVISED BY: _____

NOV: BRB39

OPERATIONS PLAN

Well Name: ANGEL PEAK B 20E
Location: 1880' FSL & 690' FEL, Section 24 T28N R11W
San Juan County, New Mexico
Formation: Basin Dakota
Elevation: 5912' GL

<u>Formation Tops:</u>	<u>Top</u>	<u>Bottom</u>	<u>Contents</u>
Surface	San Jose	870'	
Ojo Alamo	870'	927'	aquifer
Kirtland	927'	1637'	gas
Fruitland Coal	1637'	1900'	gas
Pictured Cliffs	1900'	2010'	gas
Lewis	2010'	2436'	
Huerfanito Bentonite	2436'		
Chacra	2847'	3473'	gas
Massive Cliff House	3473'	3598'	gas
Menefee	3598'	4255'	gas
Massive Point Lookout	4255'	4564'	gas
Mancos Shale	4564'	5454'	
Upper Gallup	5454'	6222'	gas
Greenhorn	6222'	6280'	gas
Graneros	6280'	6315'	gas
Two Wells	6315'	6399'	gas
Paguate	6399'	6469'	gas
Cubero	6469'	6519'	gas
Encinal	6519'	6519'	gas
Total Depth:	6519'		gas

Logging Program:

Mud Logs/Coring/DST

Mud logs - none
Coring - none
DST - none
Open hole - none
Cased hole - Gamma Ray, CBL - surface to TD

Mud Program:

<u>Interval</u>	<u>Type</u>	<u>Weight</u>	<u>Vis.</u>	<u>Fluid Loss</u>
0 - 120'	Spud MUD/Air/Air Mist	8.4 - 9.0	40 - 50	no control
120' - 2110'	LSND	8.4 - 9.0	30 - 60	no control
2110' - 6519'	Air/Air Mist/Nitrogen	n/a	n/a	n/a

Casing Program (as listed, the equivalent, or better):

<u>Hole Size</u>	<u>Depth Interval</u>	<u>Csg.Size</u>	<u>Wt.</u>	<u>Grade</u>
12 1/4"	0' - 120'	9 5/8"	32.3#	H-40
8 3/4"	0' - 2110'	7"	20#	J-55
6 1/4"	0' - 6519'	4 1/2"	10.5#	J-55

Tubing Program:

<u>Depth Interval</u>	<u>Csg.Size</u>	<u>Wt.</u>	<u>Grade</u>
0' - 6519'	2 3/8"	4.7#	J-55

BOP Specifications, Wellhead and Tests:

Surface to Intermediate TD -

11" 2000 psi minimum double gate BOP stack (Reference Figure #1). After nipple-up prior to drilling out surface casing, BOPE and casing will be tested to 600 psi for 30 minutes.

Intermediate TD to Total Depth -

11" 2000 psi minimum double gate BOP stack (Reference Figure #1). After nipple-up prior to drilling out intermediate casing, BOPE and casing will be tested to 1500 psi for 30 minutes.

Surface to Total Depth -

2" nominal, 2000 psi minimum choke manifold (Reference Figure #3).

Completion Operations -

7 1/16" 2000 psi double gate BOP stack (Reference Figure #2). After nipple-up prior to completion, pipe rams, casing and liner top will be tested to 2000 psi for 15 minutes.

Wellhead -

9 5/8" x 7" x 4 1/2" x 2 3/8" x 2000 psi tree assembly.

General -

- Pipe rams will be actuated once each day and blind rams will be actuated once each trip to test proper functioning.
- An upper kelly cock valve with handle available and drill string valves to fit each drill string will be available on the rig floors at all times.
- BOP pit level drill will be conducted weekly for each drill crew.
- All BOP tests & drills will be recorded in daily drilling reports.
- Blind and pipe rams will be equipped with extension hand wheels.

Cementing:

9 5/8" surface casing -

Pre-Set Drilled - Cement with 23 sx Type I, II cement with 20% flyash mixed at 14.5 ppg, 1.61 cu ft per sack yield. (38 cu ft of slurry, bring cement to surface) Wait on cement for 24 hours for pre-set holes before pressure testing or drilling out from under surface.

Conventionally Drilled - Cement with 88 sx Type III cement with 0.25 pps Celloflake, 2% CaCl. (113 cu ft of slurry, 200% excess, bring cement to surface) Wait on cement for 8 hrs for conventionally set holes before pressure testing or drilling out from under surface. Wait on cement appropriate time until cement achieves 250 psi compressive strength at 60 degrees F. prior to nipple up of BOPE. Wait on cement for 8 hrs for conventionally set holes before pressure testing or drilling out from under surface. Test casing to 600 psi for 30 minutes.

Saw tooth guide shoe on bottom. Bowspring centralizers will be run in accordance with Onshore Order #2.

7" intermediate casing -

Lead with 162 sacks Premium Lite cement with 3% calcium chloride, 0.25 pps Celloflake, 5 pps LCM-1, 0.4% fluid loss, 0.4% sodium metasilicate. Tail w/90 sacks Type III cmt w/1% calcium chloride, 0.25 pps Celloflake, 0.2% fluid loss (124 cu ft 50% excess to circulate to surface). WOC minimum of 8 hours before drilling out intermediate casing. If cement does not circulate to surface, a CBL or a temperature survey will be run to determine TOC. Test casing to 1500 psi for 30 minutes.

7" intermediate casing alternative two stage -

Stage collar set 300' above the top of the Fruitland. First stage: Lead w/23 sacks Premium Lite cement with 3% calcium chloride, .25 pps celloflake, 5 pps LCM-1, 0.4% fluid loss. Tail w/90 sxs Type III cmt w/1% calcium chloride, 0.25 pps Celloflake, 0.2% fluid loss. Second stage: 138 sacks Premium Lite cement with 3% calcium chloride, .25 pps celloflake, 5 pps LCM-1, 0.4% fluid loss, 0.4% sodium metasilicate (469 cu ft - 50% excess to circulate to surface).

Cement nose guide shoe on bottom with float collar spaced on top of shoe joint. Bowspring centralizers spaced every other joint off bottom, to the base of the Ojo Alamo @ 927'. Two turbolating centralizers at the base of the Ojo Alamo @ 927'. Bowspring centralizers spaced every fourth joint from the base of the Ojo Alamo to the base of the surface casing.

4 1/2" Production Casing -

Pump 289 sxs Premium Lite HS FM w/0.25 pps celloflake, 0.3% CD-32, 6.25 pps LCM-1, 1% fluid loss, 6% gel, 7 pps CSE (572 cu.ft., 30% excess to achieve 100' overlap in 4-1/2" x 7" annulus). WOC a minimum of 18 hrs prior to completing.

Cementing: Continued

Cement float collar stacked on top of float shoe.

Note: If open hole logs are run, cement volumes will be based on 25% excess over caliper volumes.

Cement nose guide shoe on bottom with float collar spaced on top of shoe joint. The liner hanger will have a rubber packoff.

- If hole conditions permit, an adequate water spacer will be pumped ahead of each cement job to prevent cement/ mud contamination or cement hydration.

Special Drilling Operations (Air/Mist Drilling):

The following equipment will be operational while air/mist drilling:

- An anchored blooie line will be utilized to discharge all cuttings and circulating medium to the blow pit a minimum of 100' from the wellhead.
- The blooie line will be equipped with an automatic igniter or pilot light.
- Compressors will be located a minimum of 100' from the wellhead in the opposite direction from the blooie line.
- Engines will have spark arresters or water cooled exhaust.
- The rotating head will be properly lubricated and maintained.
- A float valve will be utilized above the bit.
- Mud circulating equipment, water, and mud materials will be sufficient to maintain control of the well.

Additional Information:

- This will be a Dakota only.
- No abnormal temperatures or hazards are anticipated.
- Anticipated pore pressures are as follows:

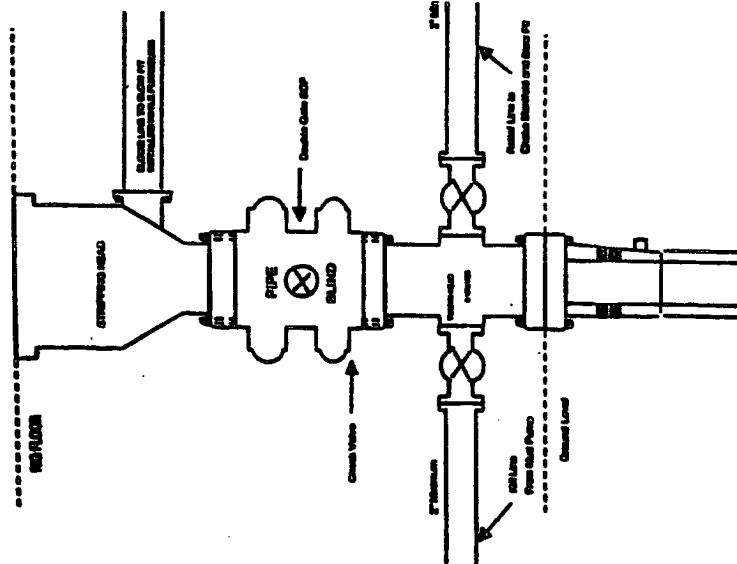
Fruitland Coal	300 psi
Pictured Cliffs	600 psi
Mesa Verde	700 psi
Dakota	2000 psi
- Sufficient LCM will be added to the mud system to maintain well control, if lost circulation is encountered below the top of the Pictured Cliffs.
- The East half of Section 24 is dedicated to the Dakota formation.
- This gas is dedicated.


Drilling Engineer


Date 7/26/06

BURLINGTON RESOURCES

**Completion/Workover Rig
BOP Configuration
2,000 psi System**

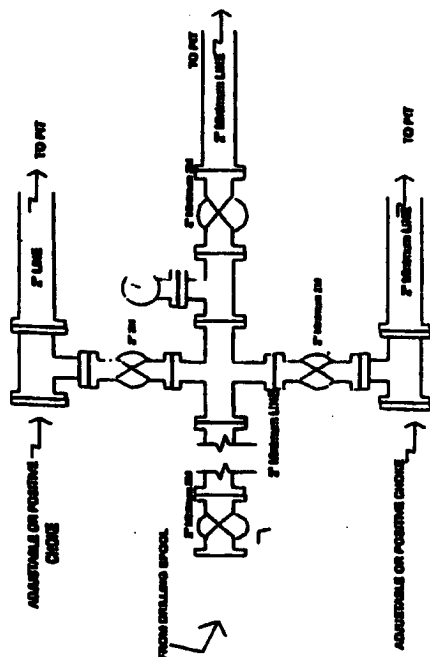


Minimum BOP installation for all Compilers/Workover Operations. 7-1/16" bore, 2000 psi minimum working pressure double gate BOP to be equipped with blind and pipe rams. A stripping head to be installed on the top of the BOP. All BOP equipment to be 2000 psi working pressure or greater excluding 500 psi stripping head.

Figure 12

BURLINGTON RESOURCES

**Drilling Rig
Choke Manifold Configuration
2000 psi System**

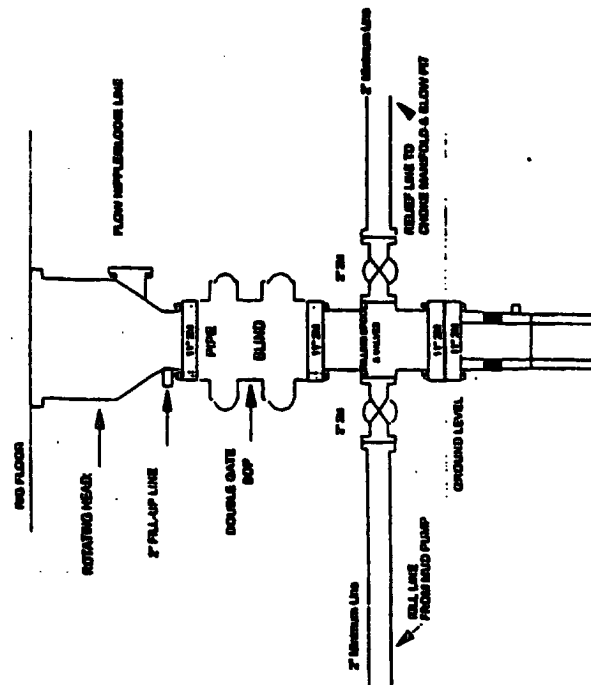


Choice manifold installation from Surface Casing Point to Total Depth. 2,000psi working pressure equipment with two choices.

Figure #3

Burlington Resources

Drilling Rig 2000 psi System



BCP Installation from Surface Ceiling Point to Total Depth, 1" Bore 10" Nominal, 2000 psi working pressure enables gas BCP to be equipped with blind ends and pipe caps. A BCP roll forming based on ram preventers. All BCP equipment is 2,000 psi wall working pressure

Figure #1