

**UNITED STATES
DEPARTMENT OF THE INTERIOR
BUREAU OF LAND MANAGEMENT**

Sundry Notices and Reports on Wells

RCVD NOV 14 06

OIL CONS. DIV.

DIST. 3

1. Type of Well
GAS

2. Name of Operator ConocoPhillips

3. Address & Phone No. of Operator

PO Box 4289, Farmington, NM 87499 (505) 326-9700

4. Location of Well, Footage, Sec., T, R, M
Sec., T—N, R—W, NMPM

Unit C (NENW), 1095' FNL & 1820' FWL, Sec. 30, T25N, R4W NMPM

5. Lease Number

6. If Indian, All. or
Tribe Name

7. Unit Agreement Name

8. Well Name & Number

Jicarilla BR D #8

9. API Well No.

10. Field and Pool

11. County and State
Blanco PC South
Rio Arriba, NM

12. CHECK APPROPRIATE BOX TO INDICATE NATURE OF NOTICE, REPORT, OTHER DATA

Type of Submission:

☐ Notice of Intent

☒ Subsequent Report

☐ Final Abandonment

Type of Action:

☒ Abandonment

☐ Recompletion

☐ Plugging

☐ Casing Repair

☐ Altering Casing

☐ Change of Plans

☐ New Construction

☐ Non-Routine Fracturing

☐ Water Shut-off

☐ Conversion to Injection

☐ Other :

13. Describe Proposed or Completed Operations

10/19/06 MIRU A-Plus #4. ND WH, NU BOP. RU w/l, RIH w/ gauge ring to 3511'. RIH w/ CIBP & set @ 3511', POOH, RD w/l. TOOH w/ tbg. TIH & tagged CIBP. Load csg. & circ. clean. PT csg., failed. Spot Plug #1 w/ 12 sx Type 3 Lead cmnt. @ 14.8 ppg, load tbg. to 3080' & circ clean, WOC. BH & csg. pressures holding, RIH & tagged TOC plug #1 @ 3136'. Spoke with w/ representative w/ the Jicarilla tribe on 10/23/06 and permission was granted that the depth was ok. PUH & perf @ 3058'. RIH w/ CR & set @ 3010'. TIH w/ stinger load csg. & PT, failed. Sting into CR, est. rate, PT to 750#, held. 10/23/06 talked to Tribal rep Bryce Hammond, permission was given to set plug on top of CR, WOC & tagged TOC. Pumped PLUG #2 w/ 10 sx Type 3 cmnt. @ 14.8 ppg (3010' - 2610') WOC. 10/24/06 TIH w/ tbg. & tagged TOC plug #2 @ 2684'. Load csg & PT, failed. RU w/l, perf @ 1860', TIH w/ CR to 1809' (collar @ 1810') POOH & RD w/l. Sting in hole, sting out, load csg & PT, failed. Sting & est. rate of 1 BPM @ 750#. Pump Plug #3 w/ 57 sx type 3 cmnt @ 14.8 ppg, pumped 45 sx outside csg., 2 sx under CR & left 10 sx on top. Cmnt. above CR was increased @ request of tribal rep. due to csg. leak. WOC. 10/25/06 load csg. & PT, failed. Pumped 2 BPM @ o#. Est. circ. out of BH & circ. clean. Pumped dye to calculate appx depth of holes in csg., estimated @ 225' +/- . RU w/l, TIH & tagged TOC plug #3 @ 1390'. 10/25/06 Permission given by Bryce Hammond w/ Tribe to use existing hole in csg @ 225' as squeeze hole for surface plug. Pump Plug #4 (surf plug) w/ 100 sx type 3 cmnt @ 14.8 ppg, 225' - surface, circ. good cmnt out of BH. Squeeze 14 sx more @ 250#. ND BOP. Dig out & cut off WH & anchors, install DHM. RD rig & released rig @ 12:00 hrs on 10/25/06.

Schematic attached

14. I hereby certify that the foregoing is true and correct.

Signed Philana Thompson

Title Regulatory Tech Date 11/13/06

ACCEPTED FOR RECORD

(This space for Federal or State Office use)

APPROVED BY _____ Title _____

CONDITION OF APPROVAL, if any:

Title 19.11 S.C. Section 1901. Subchapter 1. prima facie evidence for any person having knowledge of the facts to make any statement or opinion of

8 11/14/06
NMOCD

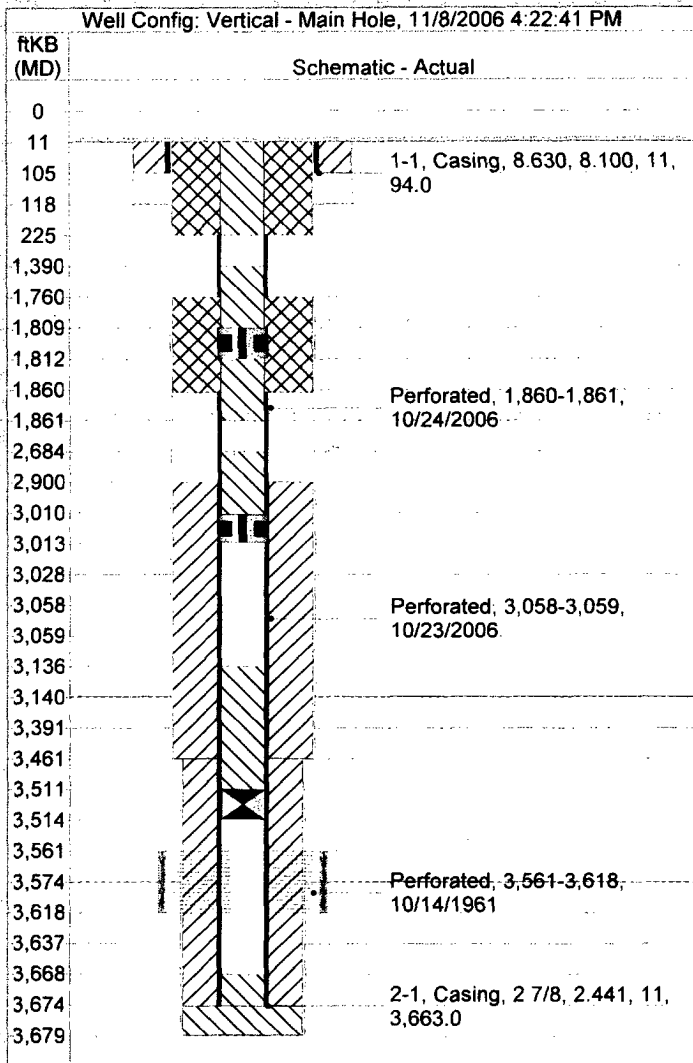
Date 11/13/06 FARMINGTON FIELD OFFICE

NOV 13 2006

END OF WELL SCHEMATIC

JICARILLA BR D 008

County	State/Province	Surface Legal Location	N/S Dist (ft)	N/S Ref	E/W Dist (ft)	E/W Ref
RIO ARRIBA	NEW MEXICO	NMPM-25N-04W-30-C	1,095.00	N	1,820.00	W
Gr Elev (ft)	Orig KB (ft)	Latitude (DMS)	Longitude (DMS)	Original Spud Date	Rig Release Date	
7,375.00	7,386.00	36° 22' 30.216" N	107° 17' 44.52" W	9/22/1961	9/27/1961	



Casing Strings

SURFACE CASING, 105.0ftKB

Casing Description

SURFACE CASING

Comment

Centralizers Count

PRODUCTION CASING, 3,674.0ftKB

Casing Description

PRODUCTION CASING

Comment

Centralizers Count

Cement

Surface Casing Cement, casing, 9/22/1961 00:00

Description

Surface Casing Cement

Cement Stages

Comment

Cement circ

Production Casing Cement, casing, 9/27/1961 00:00

Description

Production Casing Cement

Cement Stages

Comment

TOC estimated

Cement Plug, plug, 10/13/1961 00:00

Description

Cement Plug

Cement Stages

Comment

Cement Plug, plug, 10/20/2006 00:00

Description

Cement Plug

Cement Stages

Comment

PLUG #1

Cement Plug, plug, 10/23/2006 00:00

Description

Cement Plug

Cement Stages

Comment

PLUG #2. COULDN'T PUMP INTO PERFS. SET INSIDE PLUG

Cement Plug, plug, 10/24/2006 00:00

Description

Cement Plug

Cement Stages

Comment

PLUG #3 INSIDE CSG. PUMPED 45 SX OUTSIDE CSG, 2 SX UNDER CMT RET, & LEFT 10 SX ON TOP. CMT ABOVE CMT RET WAS INCREASED @ REQUEST OF TRIBAL REP DUE TO CSG LEAK.

Cement Squeeze, squeeze, 10/24/2006 00:00

Description

Cement Squeeze

Cement Stages

Comment

PLUG #3 OUTSIDE CSG. PUMPED 45 SX OUTSIDE CSG, 2 SX UNDER CMT RET, & LEFT 10 SX ON TOP. CMT ABOVE CMT RET WAS INCREASED @ REQUEST OF TRIBAL REP DUE TO CSG LEAK.

Cement Plug, plug, 10/25/2006 00:00

Description

Cement Plug

Cement Stages

Comment

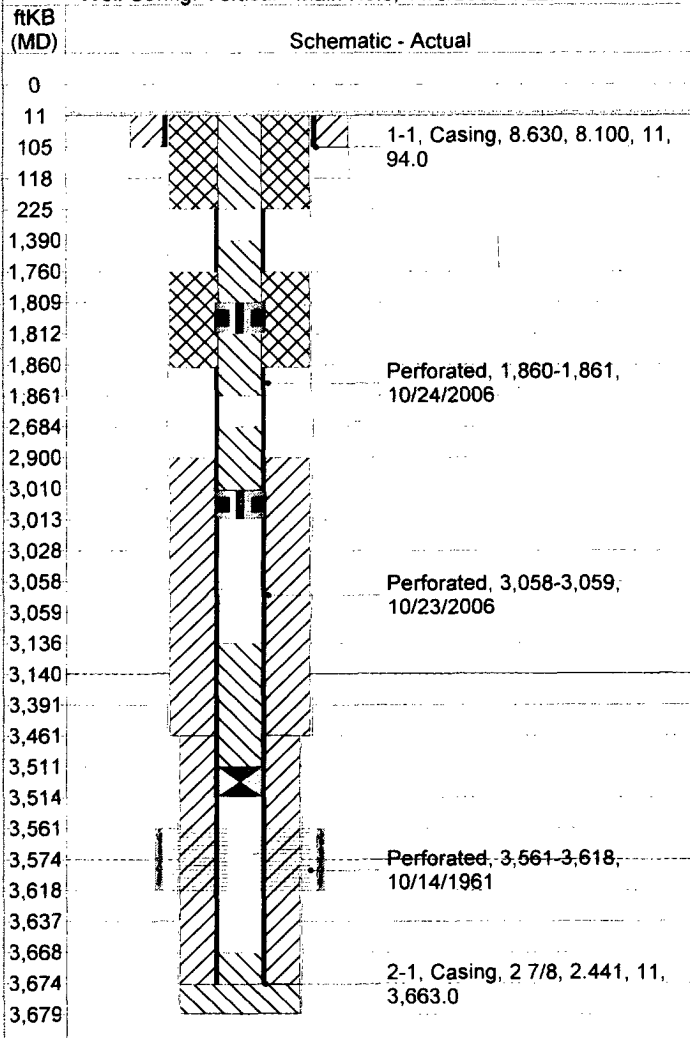
SURF PLUG INSIDE CSG

Cement Squeeze, squeeze, 10/25/2006 00:00

Description

Cement Squeeze

Well Config: Vertical - Main Hole, 11/8/2006 4:22:41 PM



Cement Stages

Comment

SURFACE PLUG OUTSIDE CSG. HAD HOLE IN CSG @ 225', DETERMINED BY DYE PUMP AROUND. DECIDED TO USE THOSE HOLES FOR SQUEEZE HOLES FOR SURF PLUG. CIRC GOOD CMT TO SURF.