

UNITED STATES
DEPARTMENT OF THE INTERIOR
BUREAU OF LAND MANAGEMENT

SUNDRY NOTICES AND REPORTS ON WELLS

Do not use this form for proposals to drill or reenter an abandoned well. Use Form 3160-3 (APD) for such proposals.

FORM APPROVED
OMB No. 1004-0135
Expires July 31, 1996

5. Lease Serial No.

SF-078064

6. If Indian, Allottee or Tribe Name

7. If Unit or CA/Agreement, Name and/or N

Carson Unit

8. Well Name and No.

Carson Unit 24-01

9. API Well No.

30-045-13301

10. Field and Pool, or Exploratory Area

Bisti Lower Gallup

11. County or Parish, State

San Juan County, NM

SUBMIT IN TRIPLICATE - Other instructions on reverse side

1.

☐ Oil Well ☐ Gas Well ☒ Other

2. Name of Operator

Elm Ridge Exploration Company, LLC

3a. Address

P.O. Box 156 Bloomfield, NM 87413

3b. Phone No. (include area code)

(505) 632-3476 ext. 201

4. Location of Well (Footage, Sec., T., R., M., or Survey Description)

454' FNL X 2074' FEL

"B" Sec.24-T25N-R12W

12. CHECK APPROPRIATE BOX(ES) TO INDICATE NATURE OF NOTICE, REPORT, OR OTHER DATA

TYPE OF SUBMISSION	TYPE OF ACTION
<input type="checkbox"/> Notice of Intent	<input type="checkbox"/> Acidize <input type="checkbox"/> Deepen <input type="checkbox"/> Production (Start/Resume) <input type="checkbox"/> Water Shut-Off
<input checked="" type="checkbox"/> Subsequent Report	<input type="checkbox"/> Alter Casing <input type="checkbox"/> Fracture Treat <input type="checkbox"/> Reclamation <input type="checkbox"/> Well Integrity
<input type="checkbox"/> Final Abandonment Notice	<input type="checkbox"/> Casing Repair <input type="checkbox"/> New Construction <input type="checkbox"/> Recomplete <input type="checkbox"/> Other
	<input type="checkbox"/> Change Plans <input checked="" type="checkbox"/> Plug and Abandon <input type="checkbox"/> Temporarily Abandon
	<input type="checkbox"/> Convert to Injection <input type="checkbox"/> Plug Back <input type="checkbox"/> Water Disposal

13. Describe Proposed or Completed Operations (clearly state all pertinent details, including estimated starting date of any proposed work and approximate duration thereof. If the proposal is to deepen directionally or recompleate horizontally, give subsurface locations and measured and true vertical depths of all pertinent markers and zones. Attach the Bond under which the work will be performed or provide the Bond No. on file with BLM/BIA. Required subsequent reports shall be filed within 30 days following completion of the involved operations. If the operation results in a multiple completion or recompleation in a new interval, a Form 3160-4 shall be filed once Testing has been completed. Final Abandonment Notices shall be filed only after all requirements, including reclamation, have been completed, and the operator has determined that the site is ready for final inspection.)

Elm Ridge Exploration Co LLC has plugged and abandoned this well as follows:

Plug 1) Set a CIBP @ 2935' Spot a balanced plug from 2935' to 2565'. Pumped 85 sks of Type 5 w/ 1% CaCl₂.

Plug 2) Spot a balance plug from 2565' to 2365'. Pumped 60 sks of Type 5 neat cement.

Plug 3) Spot a plug from 2026' to 1876'. Pumped 45 sks of Type 5 neat cement.

Plug 4) Spot a plug from 2026' to 1876'. Pumped 45 sks of Type 5 neat cement.

Plug 5) Spot a plug from 1300' to 1150'. Pumped 45 sks of Type 5 neat cement.

Plug 6) Shot 2 holes @ 1000'. Pumped 95 sks of Type 5 w/ 2% CaCl₂ cement. Plug from 1000'-825' inside and 1000'-575' outside

Plug 7) Shoot 2 holes @ 500'. Pumped 75 sks of Type 5 w/ 1% CaCl₂ cement. Plug from 500'-425' inside and 500'-110' outside.

Plug 8) Shot 2 holes @ 95'. Set balanced plug from 370' to 100'. Pumped 75 sks of Type 5 neat cement.

Plug 9) Pumped 150 sks of Type 5 neat cement and circulated cement through 8 5/8" csg. inside and out to surface at

Bradenhead and had good returns through out job. EPA was onsite to witness plugs. 11/3/06

14. I hereby certify that the foregoing is true and correct

Name (Printed/Typed)

Amy Mackey

Title

Production Technician

Signature

Date

November 8, 2006

THIS SPACE FOR FEDERAL OR STATE USE

Approved by

Title

Date

Conditions of approval, if any, are attached. Approval of this notice does not warrant or certify that the applicant holds legal or equitable title to those rights in the subject lease which would entitle the applicant to conduct operations thereon.

Office

Title 18 U.S.C. Section 1001, makes it a crime for any person knowingly and willfully to make to any department or agency of the United States any false, fictitious or fraudulent statements or representations as to any matter within its jurisdiction.

ACCEPTED FOR RECORD

(Instructions on reverse)

NMOCD

11/5/06

NOV 14 2006

FARMINGTON FIELD OFFICE

CEMENT JOB DETAIL SHEET



CUSTOMER: Elm Ridge Resources	DATE: November 3, 2006	F. R. #: 70068944	JOB TYPE: P & A
LEASE & WELL NAME: Carson Unit #1-24	LOCATION: Sec.24,T25N,R12W	SERVICE SUP: Dean Mestas	WELL TYPE: Old Gas
DRILLING CONTRACTOR & No.: Triple P #2	OPERATOR: -	COUNTY: San Juan	STATE: New Mexico

MATERIALS FURNISHED:	TYPE OF PLUGS		LIST CSG. HARDWARE	SQUEEZE MANIFOLD	TOP OF EACH FLUID	PHYSICAL SLURRY PROPERTIES					
	TOP	BOTTOM				SLURRY WEIGHT LB/GAL	SLURRY YIELD CU-FT	WATER REQ. GPS	PUMP TIME HR. MIN.	BBL SLURRY	BBL MIX WATER
Pumped: 75 sacks Cement Type 5 Neat					370'- 110'	15.6	1.18	6.2		15.6	9.3
Pumped: 150 sacks Cement Type 5 Neat					110'- Surface	15.6	1.18	6.2		31.6	18.6

AVAILABLE MIX H2O: 100 Bbl				AVAILABLE DISPL. H2O: 100 Bbl				Total cu ft: 265.6cuft				TOTAL SLURRY/WATER: 47.3 27.9				
HOLE				TBG.-CSG.-D.P.				TBG.-CSG.-D.P.				COLLAR DEPTHS				
SIZE	% EXCESS	DEPTH		SIZE	WEIGHT	TYPE	DEPTH	SIZE	WEIGHT	TYPE	DEPTH	SHOE	FLOAT	STAGE		
		8 5/8		32.0#	J-55	370'		2 7/8	6.6#	J-55	370'					
LAST CASING				PRR-CMT RET-BR PL-LINER				PERF DEPTHS		TOP CONNECTION				WELLBORE FLUID		
SIZE	WEIGHT	TYPE	DEPTH	BRAND & TYPE		DEPTH		TOP	BOTTOM	SIZE	THREAD	TYPE		WEIGHT		
				Weatherford						2 7/8	8 Round	Produced Water				
CALCULATED DISPLACEMENT VOLUME: BBL				CAL. PSI		CAL. MAX PSI		OP. MAX	MAX TBG. PSI		MAX CASING PSI		DISPLACEMENT FLUID		WATER	
TUBING	CASING	CASING	TOTAL	BUMP PLUG		TO REVERSE		SQ. PSI	RATED	OP	RATED	OP	TYPE		WEIGHT	
												600	Fresh Water		8.4	
															Water Truck	

EXPLANATION: TROUBLE SETTING TOOL, RUNNING CASING, ETC.: PRIOR TO CEMENTING

PRESSURE RATE DETAIL:						EXPLANATION	
TIME HR: MIN.	PIPE	ANNULUS	RATE BPM	BBL FLUID PUMPED	FLUID TYPE	SAFETY MEETING	CREW
8:00	-	-	-	-	-	TEST LINES	CO. REP
10:30	200	-	3.0	16.0	H2O	CIRCULATING WELL RIG	WPS
10:37	-	-	-	-	-	Arrive on location, safety meeting, rig-up	
11:13	260	-	3.0	16.0	H2O	Start H2O w/ 16.0 bbl H2O to est circulation from 96'- Surface through braiden head	
11:18	175	-	3.0	16.8	Cement	SD, TIH to 370, prepare for cement	
11:24	175	-	3.0	0.6	H2O	Start H2O w/ 16.0 bbl H2O to est circulation and load hole	
11:26	-	-	-	-	-	Start Cement w/ 16.8 bbl slurry (76sx)	
11:56	200	-	3.0	6.0	H2O	Start Displacement w/ .6 bbl H2O	
11:57	360	-	3.0	31.6	H2O	SD, TOH, rig up to backside and prepare to load, prepare for cement	
12:10	-	-	-	-	-	Start H2O w/ 6.0 bbl H2O to load hole and re-est circ.	
						Start Cement w/ 31.6 bbl slurry (160sx)	
						SD, Cement to surface, rig down	

BUMPED PLUG	PSI TO BUMP PLUG	TEST FLOAT EQUIPMENT	TOTAL BBL PUMPED	BBL CMT. RETURNS/ REVERSED	PSI LEFT ON CSG.	SPOT TOP CEMENT	KEY REPRESENTATIVE: Dean Mestas
-	-	-	82.9	10.0	-	Surface	CUSTOMER REPRESENTATIVE: Mr. Jerry Barth
							CUSTOMER REP. SIGNATURE: _____

CEMENT JOB DETAIL SHEET

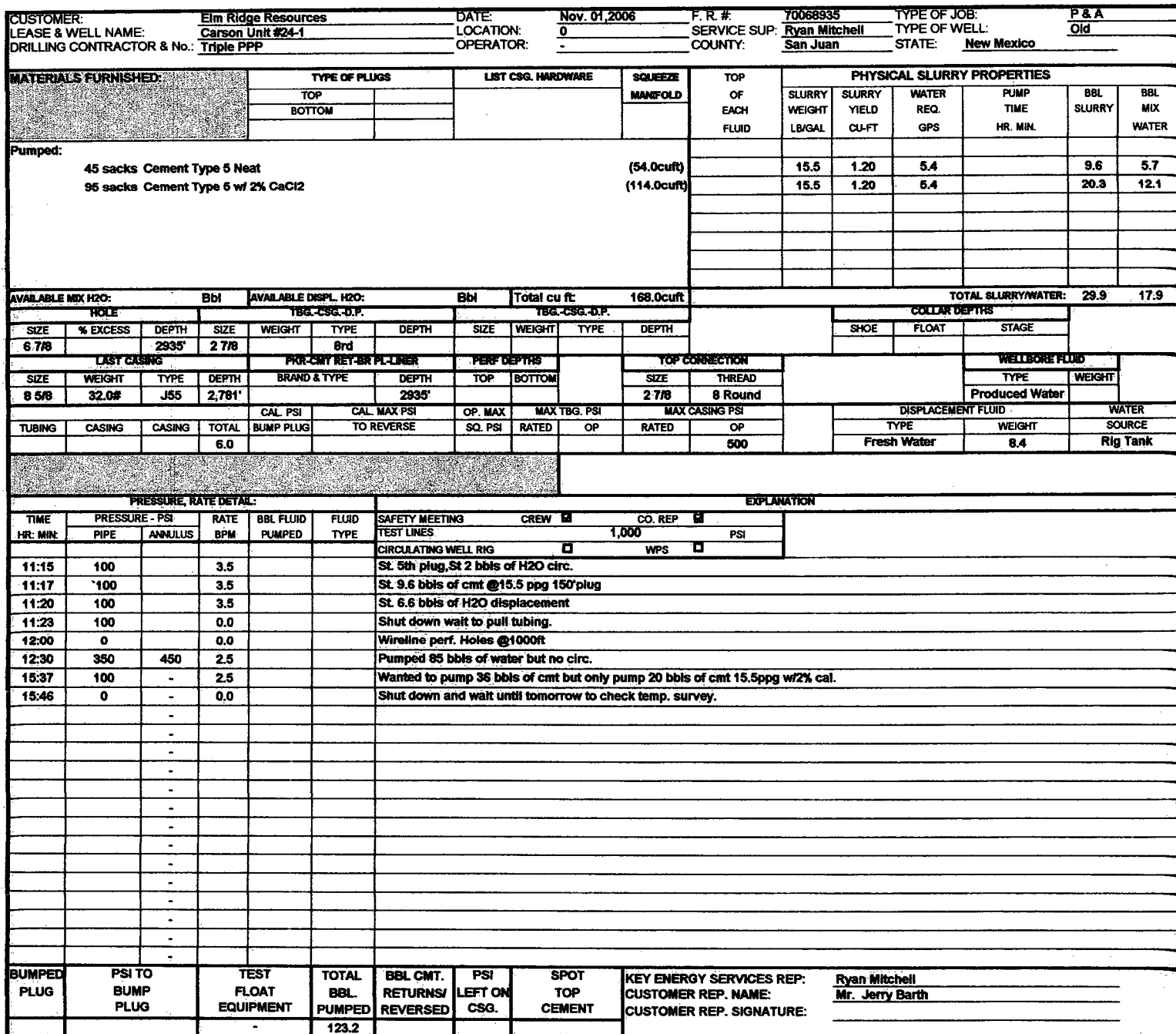


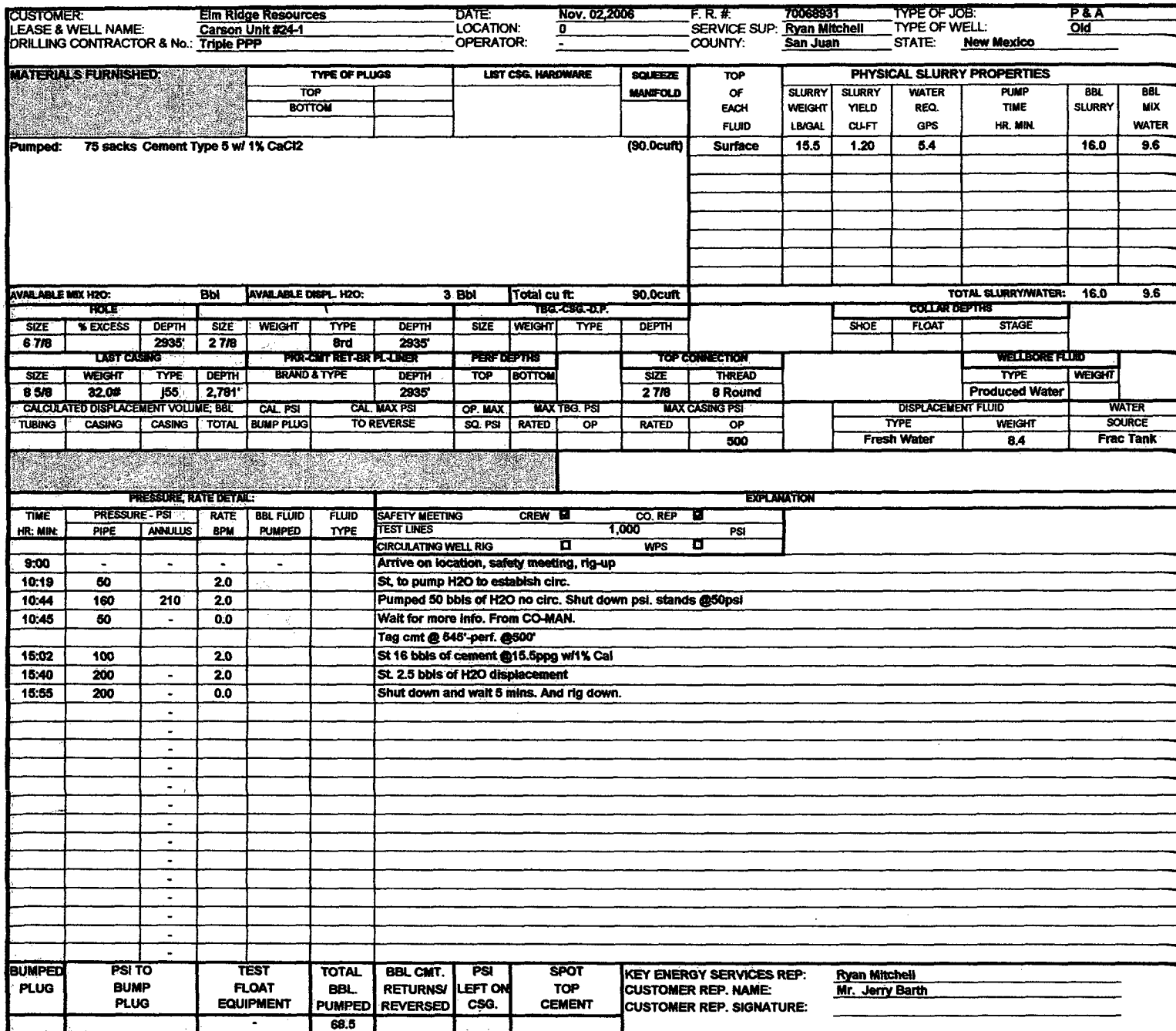
CUSTOMER: Elm Ridge Resources DATE: Nov.01,2006 F. R. #: 70068935 TYPE OF JOB: P & A
LEASE & WELL NAME: Carson Unit #24-1 LOCATION: SERVICE SUP: Ryan Mitchell TYPE OF WELL: Old
DRILLING CONTRACTOR & No.: Triple PPP OPERATOR: COUNTY: San Juan STATE: New Mexico

MATERIALS FURNISHED:	TYPE OF PLUGS		LIST CSG. HARDWARE	SQUEEZE MANIFOLD	TOP OF EACH FLUID	PHYSICAL SLURRY PROPERTIES					
	TOP	BOTTOM				SLURRY WEIGHT LB/GAL	SLURRY YIELD CU-FT	WATER REQ. GPS	PUMP TIME HR. MIN.	BBL SLURRY	BBL MIX WATER
Pumped:	85 sacks Cement Type 5 w/ 1% CaCl ₂			(102.0cuft)		15.5	1.2	5.36		18.2	10.8
	60 sacks Cement Type 5 Neat			(72.0cuft)		15.5	1.2	5.36		12.8	7.7
	45 sacks Cement Type 5 Neat			(54.0cuft)		15.5	1.2	5.36		9.6	5.7
	45 sacks Cement Type 5 Neat			(54.0cuft)		15.5	1.2	5.36		9.6	5.7

AVAILABLE MIX H ₂ O:			Bbl	AVAILABLE DISPL. H ₂ O:			61 Bbl	Total cu ft:		282.0cuft	TOTAL SLURRY/WATER: 50.2 30.0			
HOLE			TBO. CSG. D.P.				TBO. CSG. D.P.				COLLAR DEPTHS			
SIZE	% EXCESS	DEPTH	SIZE	WEIGHT	TYPE	DEPTH	SIZE	WEIGHT	TYPE	DEPTH	SHOE	FLOAT	STAGE	
6 7/8		2935'	2 7/8		8rd	2935'								
LAST CASING			PRO-CMT. RET. BR PL. LINER				PERF DEPTHS		TOP CONNECTION			WELL BORE FLUID		
SIZE	WEIGHT	TYPE	DEPTH	BRAND & TYPE		DEPTH	TOP	BOTTOM	SIZE	THREAD	TYPE		WEIGHT	
8 5/8	24.0#	J55	2,781'			2935'			2 7/8	8 Round	water			
CALCULATED DISPLACEMENT VOLUME: BBL			CAL. PSI	CAL. MAX PSI		OP. MAX	MAX TBO. PSI		MAX CASING PSI			DISPLACEMENT FLUID		WATER
TUBING	CASING	CASING	TOTAL	BUMP PLUG	TO REVERSE		SQ. PSI	RATED	OP	RATED	OP	TYPE	WEIGHT	SOURCE
			61.2									Fresh Water	8.4	Rig Tank

PRESSURE, RATE DETAIL:					EXPLANATION				
TIME HR. MIN.	PRESSURE - PSI PIPE	RATE ANNULUS	BBL FLUID PUMPED	FLUID TYPE	SAFETY MEETING TEST LINES	CREW	CO. REP	PSI	
8:00	-	-	-	-	CIRCULATING WELL RIG		WPS.		
11:45	100	4.0			Arrive on location, safety meeting, rig-up				
12:00	100	4.0			St.1st Plug, st. 30 bbl H ₂ O				
12:14	100	4.0			St.10.6 bbls of cmt @15.5ppg				
12:40	100	4.5			St. 14.2 bbls of H ₂ O displacement				
12:45	0	0.0			Reverse out cement				
15:30	100	3.5			Wait 2.5 hr to tag-didn't tag set another plug				
15:32	100	3.5			St. 5bbls to circ.re st.1st plug				
15:35	100	3.60			St. 6.5 bbls of cmt @15.5ppg				
16:10	100	4.0			St. 14 bbls H ₂ O Displacement				
9:00	500	2.0			St. reverse out 8 bbls of cmt-pumped 65 bbls of H ₂ O				
9:34	100	3.5			St 2nd plug tag 1st plug cmt @2564' and test to 500 psi. pressure test held.				
9:36	100	3.5			St. 6 bbls to circ.				
9:40	100	3.5			St. 12.8 bbls of cmt @15.5 ppg				
9:45	0	0.0			St. 13.6 bbls of H ₂ O displacement				
10:12	100	3.5			Shut down wait to pull tubing				
10:15	100	3.5			St.3rd plug st. 2 bbls of H ₂ O to circ.				
10:20	100	3.5			St. 9.6 bbls of cmt @15.5 ppg 150' plug				
10:25	0	0.0			St. 10.8 bbls of H ₂ O displacement				
10:39	100	3.5			Shut down wait to pull tubing				
10:40	100	3.5			St. 4th plug ,St 2 bbls of H ₂ O to circ.				
10:44	100	3.5			St. 9.6 bbls of cmt @15.5 ppg 150' plug				
					St. 8.6 bbls of H ₂ O displacement, shut down wait to pull tubing.				
BUMPED PLUG	PSI TO BUMP PLUG	TEST FLOAT EQUIPMENT	TOTAL BBL PUMPED	BBL CMT. RETURNS/ REVERSED	PSI LEFT ON CSG.	SPOT TOP CEMENT	KEY ENERGY SERVICES REP: Ryan Mitchell		
			150.3				CUSTOMER REP. NAME: Mr. Jerry Barth		
							CUSTOMER REP. SIGNATURE: _____		





NOTICE OF INSPECTION

Operator (Pink)