

DISTRICT I
P.O. Box 1980, Hobbs, NM 88240

DISTRICT II
P.O. Drawer DD, Artesia, NM 88210

DISTRICT III
1000 Rio Brazos Rd., Aztec, NM 87410

OIL CONSERVATION DIVISION
2040 Pacheco St.
Santa Fe, NM 87505

RCVD NOV 9 2006
OIL CON. DIV.
DIST. 3

WELL API NO.
30-039-82342

5. Indicate Type of Lease

STATE ☒

FEE ☐

6. State Oil & Gas Lease No.

E 291

SUNDRY NOTICES AND REPORTS ON WELLS

(DO NOT USE THIS FORM FOR PROPOSALS TO DRILL OR TO DEEPEN OR PLUG BACK TO A
DIFFERENT RESERVOIR. USE "APPLICATION FOR PERMIT"
(FORM C-101) FOR SUCH PROPOSALS)

1. Type of Well:

OIL
WELL ☒

GAS
WELL ☐

OTHER

2. Name of Operator

Elm Ridge Exploration Co., LLC

3. Address of Operator

PO Box 156 Bloomfield, NM 87413

4. Well Location

Unit Letter F : 1650 Feet From The North Line and 1725 Feet From The West Line
Section 36 Township 25N Range 6W NMPM Rio Arriba County

10. Elevation (Show whether DF, RKB, RT, GR, etc.)
6780' GR

Check Appropriate Box to Indicate Nature of Notice, Report, or Other Data

NOTICE OF INTENTION TO:

PERFORM REMEDIAL WORK ☐

PLUG AND ABANDON ☒

TEMPORARILY ABANDON ☐

CHANGE PLANS ☐

PULL OR ALTER CASING ☐

OTHER: ☐

SUBSEQUENT REPORT OF:

REMEDIAL WORK ☐ ALTERING CASING ☐

COMMENCE DRILLING OPNS. ☐ PLUG AND ABANDONMENT ☐

CASING TEST AND CEMENT JOB ☐

OTHER: ☐

12. Describe Proposed or Completed Operations (Clearly state all pertinent details, and give pertinent date, including estimated date of starting any proposed work) SEE RULE 1103.

This well is incapable of production. Elm Ridge Exploration Co., LLC requests approval to plug and abandon the above referenced well according to the attached procedure.

SIGNATURE Amy Mackey TITLE Production Assistant DATE 11/06/06
TYPE OR PRINT NAME Amy Mackey TELEPHONE NO. 505-632-3476 ext. 201

(This space for State Use)

APPROVED BY H. Villanueva

TITLE DEPUTY OIL & GAS INSPECTOR, DIST. 3 DATE NOV 09 2006

CONDITIONS OF APPROVAL, IF ANY:

8/15/06

Elm Ridge Resources

Pertinent Data Sheet

Well Name: Harvey State #3
Footage: 1650' FNL and 1725' FWL
Location: Section 36, T25N, R6W
County: Rio Arriba County, NM
API#: 30-039-82342

Field: Otero Gallup

Elevation: 6780' GR

TD: 6375' KB

PBTD: 6340' KB

Completed: 8/7/60

Casing Record:

Hole Size	Casing Size	Wt.	Grade	Depth Set	Cement
12-1/4"	8-5/8"	24#	J-55	300'	155sx (Circ. To Surface)
7-7/8"	4-1/2"	9.5/11.6#	J-55	6373'	Stg 1: 250 sx (TOC: 4860' TS)

Tubing Record: NC, 1 jt. 2-3/8" tbg., SN, 197 jts. 2-3/8" set at 6209'

Formation Tops:

Nacimiento	475'
Ojo Alamo	2211'
Kirtland	2297'
Fruitland Coal	2520'
Pictured Cliffs	2656'
Lewis	2770'
Chacra	3136'
Cliff House	4221'
Menefee	4318'
Point Lookout	4847'
Mancos	5060'
Gallup	5967'

Perforations: Gallup: 6016-6314'

Notes: Squeezed casing failure with 300 sx from 1131-1573' (9/74)

Plugging Program for Harvey State #3:

Plug 1: TIH with 4-1/2" retainer on 2-3/8" tubing and set at 5967'. Squeeze below retainer with 12 sacks. Spot 4 sacks on top of retainer to cover Gallup top. Pull up and reverse circulate with 2 tubing volumes of water.

Plug 2: Perforate 4 squeeze holes at 4271'. TIH with 4-1/2" cement retainer and set at 4221'. Squeeze below retainer with 47 sx and spot 4 sx balanced plug on top of retainer to cover 100' across Cliff House top from 4271-4171', inside and outside. Pull up and reverse circulate with 2 tubing volumes of water.

Plug 3: Perforate 4 squeeze holes at 3186'. TIH with 4-1/2" cement retainer and set at 3136'. Squeeze below retainer with 47 sx and spot 4 sx balanced plug on top of retainer to cover 100' across Chacra top from 3186-3086', inside and outside. Pull up and reverse circulate with 2 tubing volumes of water.

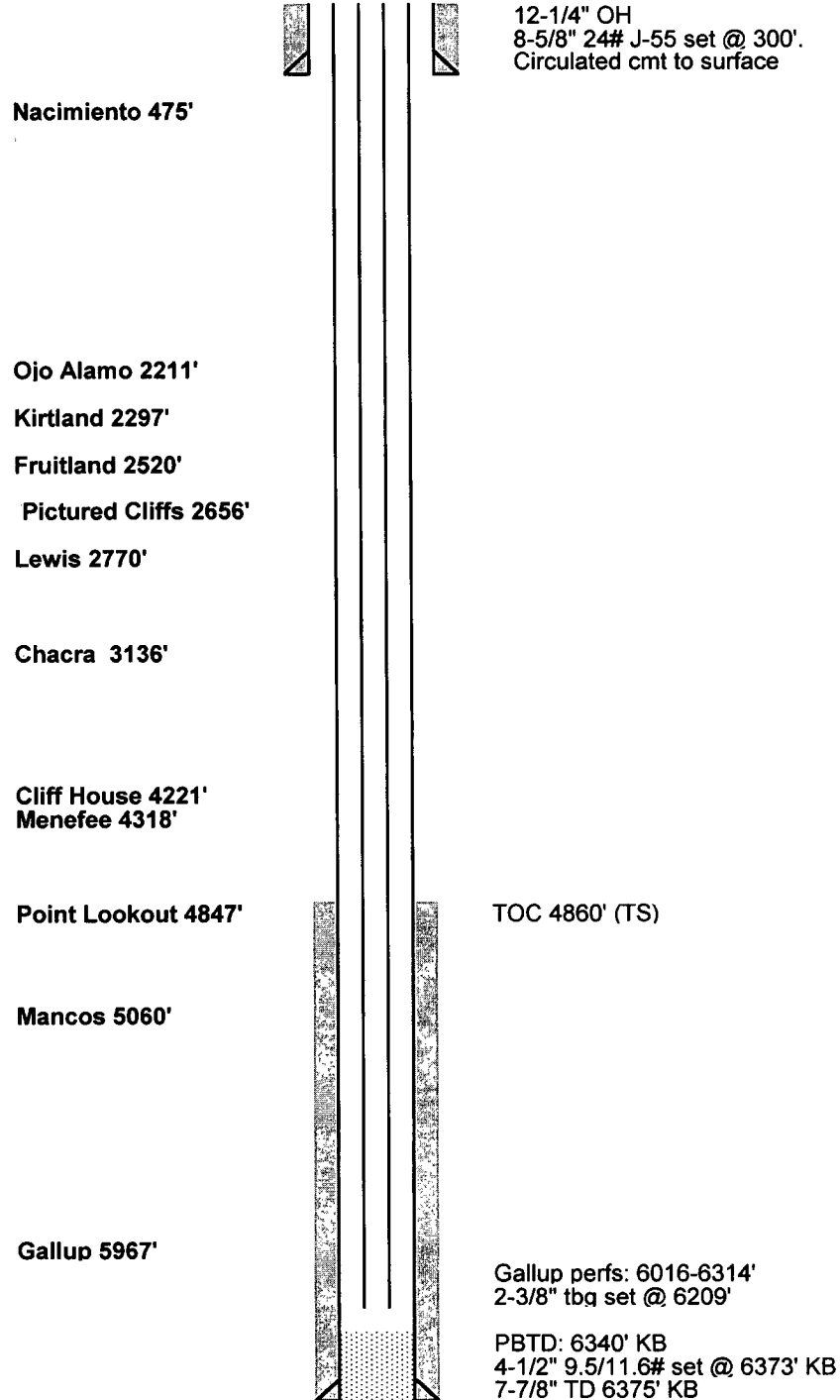
Plug 4: Perforate 4 squeeze holes at 2706'. TIH with 4-1/2" cement retainer and set at 2211'. Squeeze below retainer with 250 sx and spot 4 sx balanced plug on top of retainer to cover across Pictured Cliffs, Fruitland, Kirtland, and Ojo Alamo tops from 2706-2161', inside and outside. Pull up and reverse circulate with 2 tubing volumes of water. TOOH with tubing.

Plug 5: Perf 4 holes at 525'. Tie onto 4-1/2" casing. Pump 202 sacks, or sufficient volume, to cover Nacimiento top inside and outside casing, and to bring cement to surface, inside and outside 4-1/2" casing.

Remediate location according to NMOCD conditions of approval.

Wellbore Diagram
Harvey State #3
NW/4 Sec. 36, T25N, R6W
Rio Arriba Co., NM
API #30-039-82342

Before



Wellbore Diagram
Harvey State #3
NW/4 Sec. 36, T25N, R6W
Rio Arriba Co., NM
API #30-039-82342

After

