

UNITED STATES  
DEPARTMENT OF THE INTERIOR  
BUREAU OF LAND MANAGEMENT

RCVD DEC8'06  
OIL CONS. DIV.  
DIST. 3

APPLICATION FOR PERMIT TO DRILL, DEEPEN, OR PLUG BACK

2005 NOV 30 PM 4 57

RECEIVED  
OTO FARMINGTON NM

1a. Type of Work  
DRILL

5. Lease Number  
NMSF-078244  
Unit Reporting Number

1b. Type of Well  
GAS

6. If Indian, All. or Tribe

2. Operator  
**BURLINGTON**  
RESOURCES Oil & Gas Company, LP

7. Unit Agreement Name

3. Address & Phone No. of Operator  
PO Box 4289, Farmington, NM 87499  
(505) 326-9700

8. Farm or Lease Name  
Taliaferro

9. Well Number  
100

4. Location of Well  
Unit M (SWSW), 975' FSL & 940' FWL,  
  
Latitude 36° 51.1024'N  
Longitude 108° 06.5870'W  
  
Lot 4

10. Field, Pool, Wildcat  
Basin FC / Aztec PC

11. Sec., Twn, Rge, Mer. (NMPM)  
Sec. 31, T31N, R12W  
API # 30-045- 34088

14. Distance in Miles from Nearest Town

12. County  
San Juan

13. State  
NM

15. Distance from Proposed Location to Nearest Property or Lease Line  
940'

16. Acres in Lease

17. Acres Assigned to Well  
FC-301.03 ac W/2; PC-152.9 ac SW/4

18. Distance from Proposed Location to Nearest Well, Drlg, Compl, or Applied for on this Lease  
Twinned w/Taliaferro #2

19. Proposed Depth  
2326'

20. Rotary or Cable Tools  
Rotary

21. Elevations (DF, FT, GR, Etc.)  
5903' GL

22. Approx. Date Work will Start

23. Proposed Casing and Cementing Program  
See Operations Plan attached

24. Authorized by: Patsy Christman  
Sr. Regulatory Specialist

Date 11/30/06

PERMIT NO.

APPROVAL DATE

APPROVED BY

TITLE

DATE

Archaeological Report attached

Threatened and Endangered Species Report attached

NOTE: This format is issued in lieu of U.S. BLM Form 3160-3

Title 18 U.S.C. Section 1001, makes it a crime for any person knowingly and willfully to make to any department or agency of the United States any false, fictitious or fraudulent statements or presentations as to any matter within its jurisdiction.

Not an HPA FC Well

DRILLING OPERATIONS AUTHORIZED ARE  
SUBJECT TO COMPLIANCE WITH ATTACHED  
"GENERAL REQUIREMENTS".

NMOCD

12/12/06

This action is subject to technical and  
procedural review pursuant to 43 CFR 3165.3  
and appeal pursuant to 43 CFR 3165.4

Revised October 12, 2005

DISTRICT I  
1625 N. French Dr., Hobbs, N.M. 88240State of New Mexico  
Energy, Minerals & Natural Resources DepartmentDISTRICT II  
1301 West Grand Avenue, Artesia, N.M. 88210

## OIL CONSERVATION DIVISION

1220 South St. Francis Dr. Santa Fe, NM 87505

Submit to Appropriate District Office  
State Lease - 4 Copies  
Fee Lease - 3 CopiesDISTRICT III  
1000 Rio Brazos Rd., Aztec, N.M. 87410DISTRICT IV  
1220 S. St. Francis Dr., Santa Fe, NM 87505RECEIVED  
070 FARMINGTON, NM☐ AMENDED REPORT

## WELL LOCATION AND ACREAGE DEDICATION PLAT

<sup>1</sup> API Number 30-045- 34088	<sup>2</sup> Pool Code 71280 / 71629	<sup>3</sup> Pool Name Aztec Pictured Cliffs / Basin Fruitland Coal
<sup>4</sup> Property Code 7579	<sup>5</sup> Property Name TALIAFERRO	<sup>6</sup> Well Number 100
<sup>7</sup> OGRD No. 14538	<sup>8</sup> Operator Name BURLINGTON RESOURCES OIL AND GAS COMPANY LP	<sup>9</sup> Elevation 5903'

<sup>10</sup> Surface Location

UL or lot no.	Section	Township	Range	Lot Idn	Feet from the	North/South line	Feet from the	East/West line	County
M	31	31-N	12-W		975'	SOUTH	940'	WEST	SAN JUAN

<sup>11</sup> Bottom Hole Location If Different From Surface

UL or lot no.	Section	Township	Range	Lot Idn	Feet from the	North/South line	Feet from the	East/West line	County
M									

<sup>12</sup> Dedicated Acres PC 152.9 ac SW4 FC 301.03 ac W2	<sup>13</sup> Joint or Infill	<sup>14</sup> Consolidation Code	<sup>15</sup> Order No.
---	-------------------------------	----------------------------------	-------------------------

NO ALLOWABLE WILL BE ASSIGNED TO THIS COMPLETION UNTIL ALL INTERESTS HAVE BEEN CONSOLIDATED  
OR A NON-STANDARD UNIT HAS BEEN APPROVED BY THE DIVISION

LOT 6	LOT 5
LOT 7	USA SF-078244
LOT 8	USA SF-078244
LOT 4	LAT: 36°51'10.24" N. LONG: 108°08'58.70" W. NAD 1927  LAT: 36°51'08.2" N. LONG: 108°08'37.5" W. NAD 1983

940'

975'

S 89° 48' 56" E  
2071.26'

<sup>17</sup> OPERATOR CERTIFICATION

I hereby certify that the information contained herein is true and complete to the best of my knowledge and belief, and that this organization either owns a working interest or unleased mineral interest in the land including the proposed bottom hole location or has a right to drill this well at this location pursuant to a contract with an owner of such a mineral or a working interest, or to a voluntary pooling agreement or a compulsory pooling order heretofore entered by the division.

Amanda Sanchez  
Signature  
Amanda Sanchez  
Printed Name

<sup>18</sup> SURVEYOR CERTIFICATION

I hereby certify that the well location shown on this plat was plotted from field notes of actual surveys made by me or under my supervision, and that the same is true and correct to the best of my belief.

6-6-11-06  
Date of Survey  
Signature and Seal of Professional Surveyor:

15703  
15703  
Certificate Number

Office

Energy, Minerals and Natural Resources

May 27, 2004

District I

1625 N. French Dr., Hobbs, NM 88240

District II

1301 W. Grand Ave., Artesia, NM 88210

District III

1000 Rio Brazos Rd., Aztec, NM 87410

District IV

1220 S. St. Francis Dr., Santa Fe, NM 87505

**OIL CONSERVATION DIVISION**

1220 South St. Francis Dr.

Santa Fe, NM 87505

WELL API NO.	30-045- <b>34088</b>
5. Indicate Type of Lease	STATE <input type="checkbox"/> FEE <input checked="" type="checkbox"/>
6. State Oil & Gas Lease No.	USA SF - 078244
7. Lease Name or Unit Agreement Name	Taliaferro
8. Well Number	100
9. OGRID Number	14538
10. Pool name or Wildcat	Picture Cliff / Fruitland Coal

**SUNDRY NOTICES AND REPORTS ON WELLS**  
 (DO NOT USE THIS FORM FOR PROPOSALS TO DRILL OR TO DEEPEN OR PLUG BACK TO A DIFFERENT RESERVOIR. USE "APPLICATION FOR PERMIT" (FORM C-101) FOR SUCH PROPOSALS.)

1. Type of Well:  
 Oil Well ☐ Gas Well ☒ Other

2. Name of Operator  
 BURLINGTON RESOURCES OIL & GAS COMPANY LP

3. Address of Operator  
 3401 E. 30TH STREET, FARMINGTON, NM 87402

4. Well Location  
 Unit Letter M : 975' feet from the South line and 940' feet from the West line  
 Section 31 Township 31N Rng 12W NMPM County San Juan

11. Elevation (Show whether DR, RKB, RT, GR, etc.)  
 5903'

Pit or Below-grade Tank Application ☐ or Closure ☐

Pit type New Drill Depth to Groundwater <50' Distance from nearest fresh water well >1000' Distance from nearest surface water >200'  
 Pit Liner Thickness: 12 mil Below-Grade Tank: Volume        bbls; Construction Material       

## 12. Check Appropriate Box to Indicate Nature of Notice, Report or Other Data

**NOTICE OF INTENTION TO:**

PERFORM REMEDIAL WORK ☐ PLUG AND ABANDON ☐  
 TEMPORARILY ABANDON ☐ CHANGE PLANS ☐  
 PULL OR ALTER CASING ☐ MULTIPLE COMPL ☐

**SUBSEQUENT REPORT OF:**

REMEDIAL WORK ☐ ALTERING CASING ☐  
 COMMENCE DRILLING OPNS. ☐ P AND A ☐  
 CASING/CEMENT JOB ☐

OTHER: New Drill ☒

OTHER: ☐

13. Describe proposed or completed operations. (Clearly state all pertinent details, and give pertinent dates, including estimated date of starting any proposed work). SEE RULE 1103. For Multiple Completions: Attach wellbore diagram of proposed completion or recompletion.

New Drill, Lined:

Burlington Resources proposes to construct a new drilling pit and an associated vent/flare pit. Based on Burlington's interpretation of the Ecosphere's risk ranking criteria, the new drilling pit will be a lined pit as detailed in Burlington's Revised Drilling / Workover Pit Construction / Operation Procedures dated November 11, 2004 on file at the NMOCDC office. A portion of the vent/flare pit will be designed to manage fluids and that portion will be lined as per the risk ranking criteria. Burlington Resources anticipates closing these pits according to the Drilling / Workover Pit Closure Procedure dated August 2, 2004 on file at the NMOCDC office.

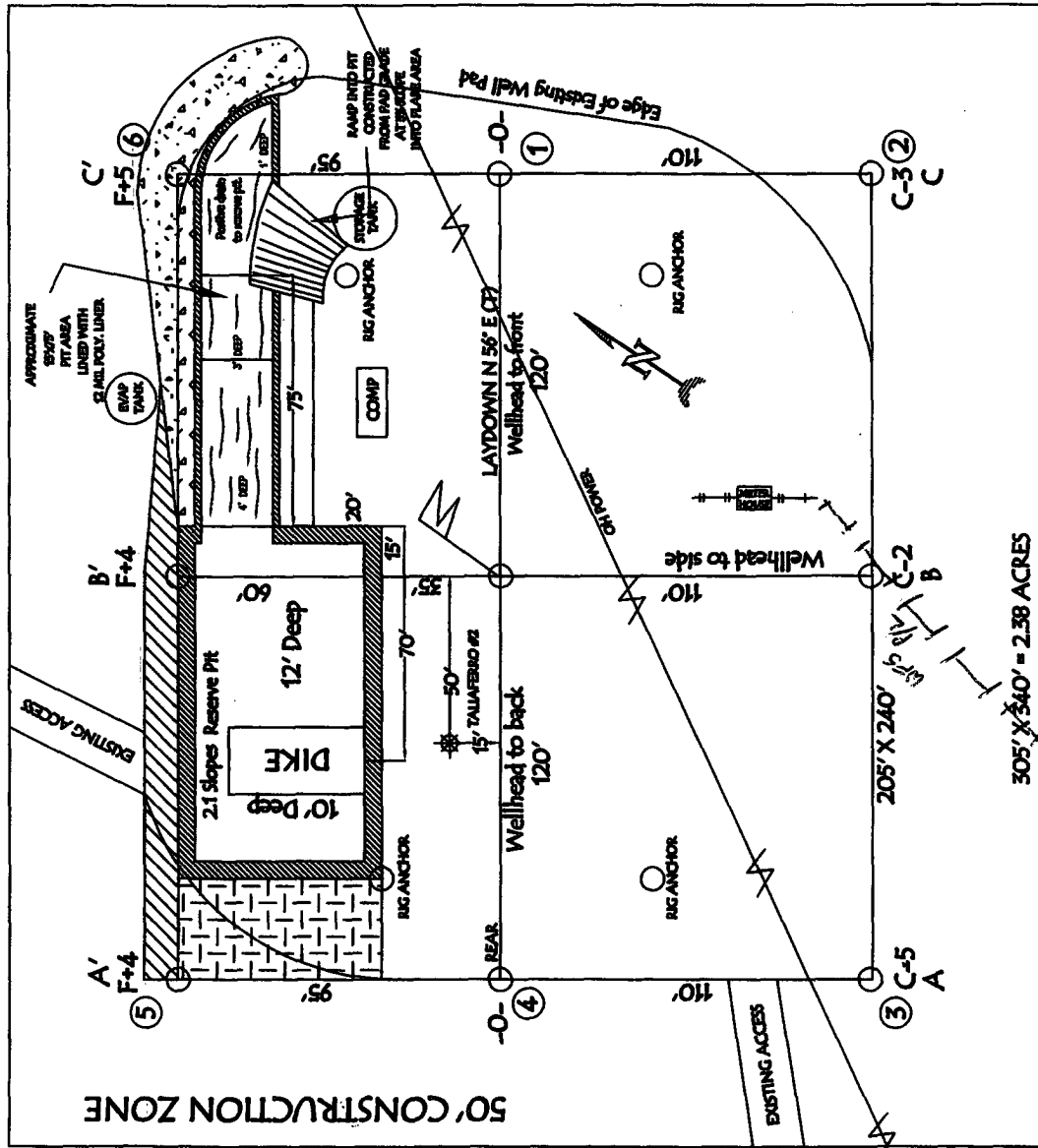
I hereby certify that the information above is true and complete to the best of my knowledge and belief. I further certify that any pit or below-grade tank has been/will be constructed or closed according to NMOCDC guidelines ☐, a general permit ☒ or an (attached) alternative OCD-approved plan ☐.

SIGNATURE Patsy Clugston TITLE Sr. Regulatory Specialist DATE 11/30/2006

Type or print name Patsy Clugston E-mail address: pclugston@br-inc.com Telephone No. 505-326-9700  
**For State Use Only:**

APPROVED BY [Signature] TITLE DEPUTY OIL & GAS INSPECTOR, DIST. IV DATE DEC 12 2006  
 Conditions of Approval (if any):

BURLINGTON RESOURCES OIL & GAS COMPANY LP  
 TALIAFERRO 100, 975' FSL & 940' FWL  
 SECTION 31, T-31-N, R-12-W, NMPM, SAN JUAN COUNTY, NM  
 GROUND ELEVATION: 5903', DATE: MAY 16, 2006



LATITUDE: 36° 51.1024' N LONGITUDE: 108° 08.5870' W NAD27

RESERVE PIT DIKE: TO BE 8' ABOVE DEEP SIDE (OVERFLOW - 3' WIDE AND 1' ABOVE SHALLOW SIDE).

NOTE: VECTOR SURVEYS LLC IS NOT LIABLE FOR UNDERGROUND UTILITIES OR PIPELINES.

CONTRACTOR SHOULD CALL ONE-CALL FOR LOCATION OF ANY MARKED OR UNMARKED BURIED

PIPELINES OR CABLES ON WELL PAD AND OR ACCESS ROAD AT LEAST TWO (2) WORKING DAYS PRIOR TO CONSTRUCTION.

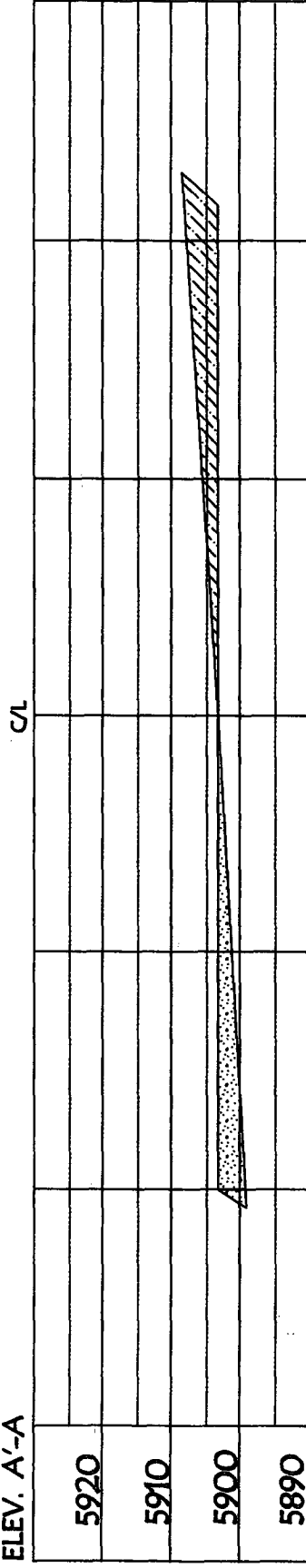
# BURLINGTON RESOURCES OIL & GAS COMPANY LP

TALIAFERRO 100, 975' FSL & 940' FWL

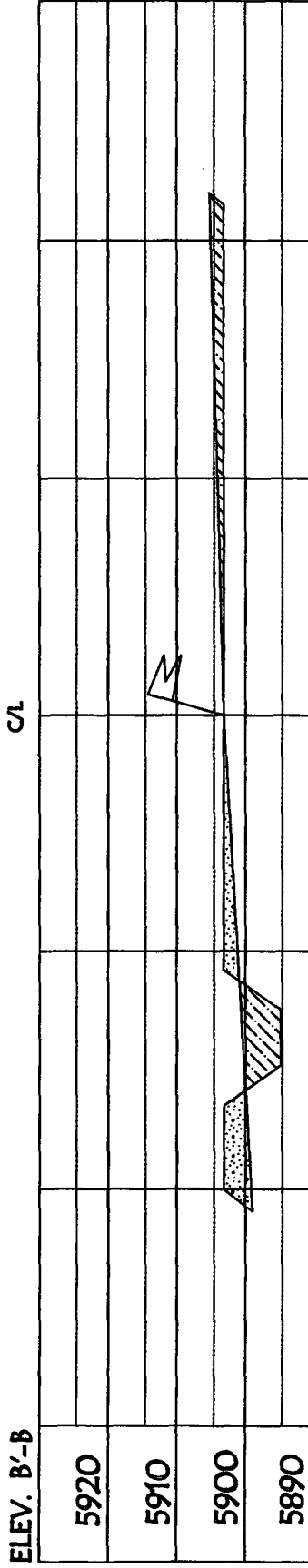
SECTION 31, T31 N, R12 W, NMPM, SAN JUAN COUNTY, NM

GROUND ELEVATION: 5903', DATE: MAY 16, 2006

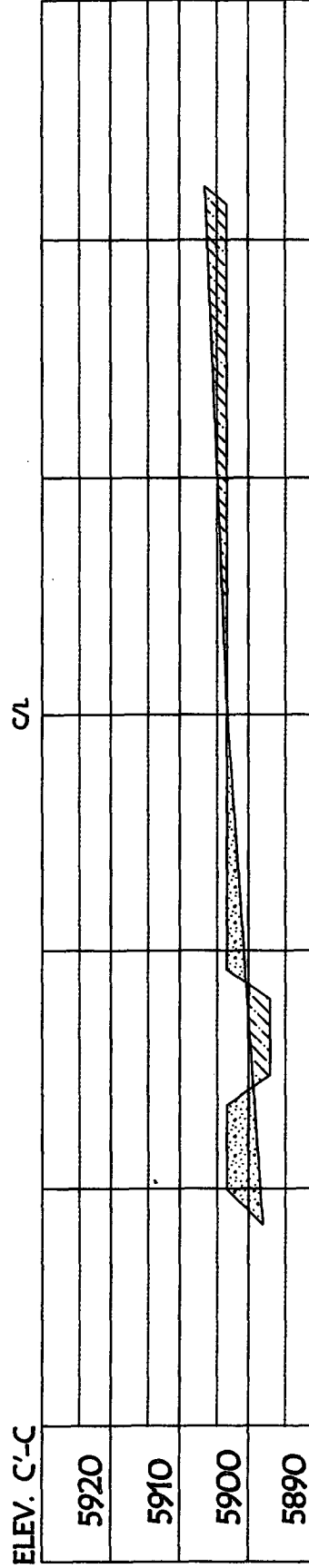
ELEV. A'-A



ELEV. B'-B



ELEV. C'-C



NOTE: VECTOR SURVEYS LLC IS NOT LIABLE FOR UNDERGROUND UTILITIES OR PIPELINES.  
CONTRACTOR SHOULD CALL ONE-CALL FOR LOCATION OF ANY MARKED OR UNMARKED BURIED  
PIPELINES OR CABLES ON WELL PAD AND OR ACCESS ROAD AT LEAST TWO (2) WORKING DAYS PRIOR TO CONSTRUCTION.

November 30, 2006

OPERATIONS PLAN

**Well Name:** Taliaferro #100  
**Location:** Unit M (SWSW), 975' FSL & 940' FWL, Section 31, T31N, R12W  
 San Juan County, New Mexico  
 Latitude 36° 51.1024'N Longitude 108° 08.5870' W  
**Formation:** Basin Fruitland Coal / Aztec Pictured Cliffs  
**Elevation:** 5903' GR

Formation:	Top	Bottom	Contents
Ojo Alamo	474'	521'	aquifer
Kirtland	521'	1841'	gas
T/Fruitland	1841'	2126'	gas
Pictured Cliffs	2126'		
<b>Total Depth</b>	<b>2326'</b>		

**Logging Program:** None

**Mud Program:**

<u>Interval</u>	<u>Type</u>	<u>Weight</u>	<u>Vis. Fluid Loss</u>
0- 120'	Spud/Air/Air Mist	8.4-8.9	40-50 no control
120-2326'	Non-dispersed	8.4-9.5	30-60 no control

**Casing Program:**

<u>Hole Size</u>	<u>Depth Interval</u>	<u>Csg. Size</u>	<u>Wt.</u>	<u>Grade</u>
8 $\frac{3}{4}$ "	0 - 120'	7"	20.0#	J-55
6 $\frac{1}{4}$ "	0 - 2326'	4 1/2"	10.5#	J/K-55

**Tubing Program:**

0 - 2326'	2 3/8"	4.7#	J-55
-----------	--------	------	------

**Float Equipment:** 7" surface casing - guide shoe. Centralizers will be run in accordance with Onshore Order #2.

4 1/2" production casing - float shoe and float collar on bottom. Centralizers run every third joint above shoe to the base of the Ojo Alamo @521'. Two turbolizing type centralizers - one below and one into the base of the Ojo Alamo @ 521'. Standard centralizers thereafter every fourth joint up to the base of the surface pipe.

**Wellhead Equipment:** 7" x 4 1/2" x 2 3/8" x 11" 2000 psi xmas tree assembly.

November 30, 2006

**Cementing:**

7" surface casing Pre-Set Drilled - Cement with Type I, II cement with 20% flyash mixed at 14.5 ppg, 1.28 cu ft per sack yield. (Bring cement to surface). Wait on cement for 24 hours for pre-set holes before pressure testing or drilling out from under surface.

7" surface casing - Cement with 42 sx Type III cement with 0.25 pps Celloflake, 3% CaCl. (54 cu ft of slurry @ 1.28 yield). 200% excess, bring cement to surface. Wait on cement for 8 hrs for conventionally set holes before pressure testing or drilling out from under surface.  
**WOC until cement establishes 2500 psi compressive strength prior to NU of BOPE.**

4 1/2" production casing - Cement 110 sx (234 cu ft of slurry @ 2.13 yield) Premium Lite with 3% calcium chloride, 5 pps LCM-1, and 1/4#/sack celloflake, 0.4% FL-52, & 0.4% SMS. Tail with 90 sacks (124 cu ft of slurry @ 1.38 yield) Type III cmt with 1% calcium chloride, 1/4#/sack Celloflake and 0.2% FL-52. Total of 358 cf - 50% excess to circulate to surface.

**BOP and tests:**

Surface to TD - 11" 2000 psi (minimum double gate BOP stack (Reference Figure #1 and #2). Prior to drilling out surface casing, test rams to 600 psi/30 min.


Completion - 6" 2000 psi (minimum) double gate BOP stack (Reference Figure #2). Prior to completion operations, test rams and casing to 1500 psi/30 min.

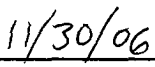
From surface to TD - choke manifold (Reference Figure #3).

Pipe rams will be actuated at least once each day and blind rams actuated once each trip to test proper functioning. An upper kelly cock valve with handle and drill string safety valves to fit each drill string will be maintained and available on the rig floor.

**Additional information:**

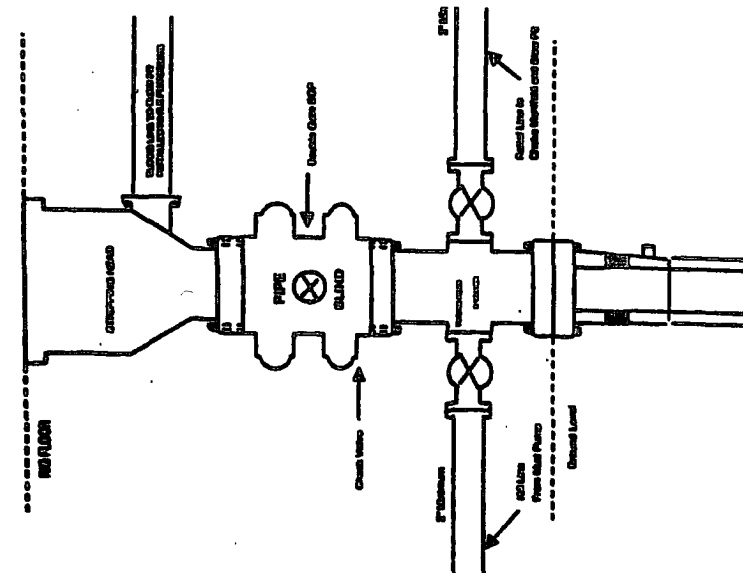
- \* The Fruitland Coal and Pictured formations will be completed.
- \* Anticipated pore pressure for the Fruitland Coal is 600 - 700 psi.
- \* This gas is dedicated.
- \* The west half of the section is dedicated to the FC, and the SW/4 of the section is dedicated to the PC for this well.
- \* New casing will be utilized.
- \* Pipe movement (either rotation or reciprocation) will be done if hole conditions permit.

  
Drilling Engineer

  
Date

# BURLINGTON RESOURCES

Completion/Workover Rig  
BOP Configuration  
2,000 psi System



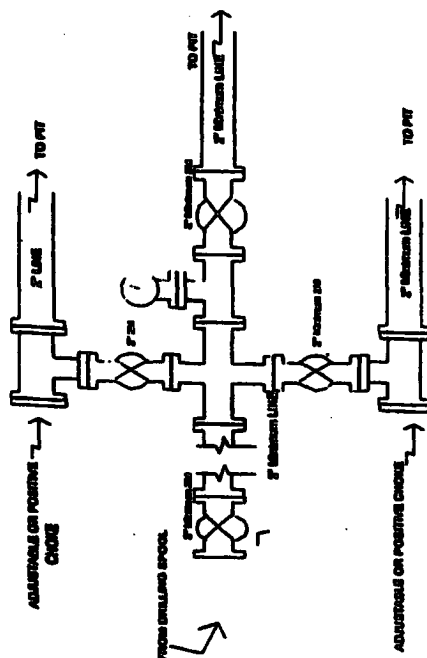
Minimum BOP installation for all Completion/Workover Operations. 7-1/16" bore, 2000 psi minimum working pressure double gate BOP to be equipped with blind and pipe rams. A stripping head to be installed on the top of the BOP. All BOP equipment is 2000 psi working pressure or greater excluding 500 psi stripping head.

Figure #2

4-20-01

# BURLINGTON RESOURCES

Drilling Rig  
Choke Manifold Configuration  
2000 psi System



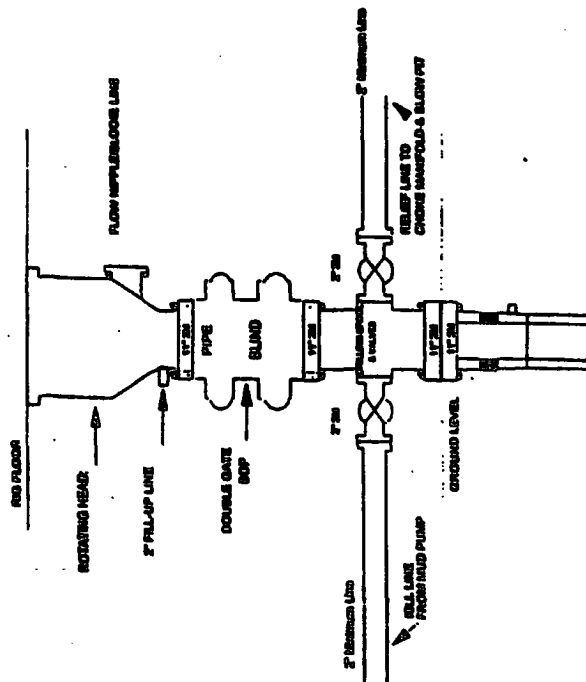
Choke manifold installation from Surface Casing Point to Total Depth. 2,000psi working pressure equipment with two chokes.

Figure #3

4-20-01

# Burlington Resources

Drilling Rig  
2000 psi System



BOP installation from Surface Casing Point to Total Depth. 11" Bore 10" Minimum, 2000 psi working pressure double gate BOP to be equipped with blind rams and pipe rams. A 500 psi stripping head on top of ram preventer. All BOP equipment is 2,000 psi working pressure.

Figure #1