

UNITED STATES
DEPARTMENT OF INTERIOR
BUREAU OF LAND MANAGEMENT

FORM APPROVED RCVD DEC12'06
Budget Bureau No. 1004-0135
Expires: March 31, 1993 OIL CONS. DIV.

SUNDRY NOTICE AND REPORTS ON WELLS

Do not use this form for proposals to drill or to deepen or reentry to a different reservoir. Use "APPLICATION TO DRILL" for permit for such proposals

5. Lease Designation and Serial No. **DIST. 3**
NMSF-078767

6. If Indian, Allottee or Tribe Name

7. If Unit or CA, Agreement Designation

1. Type of Well
Oil Well ☒ Gas Well ☐ Other ☐

8. Well Name and No.
ROSA UNIT #30

2. Name of Operator
WILLIAMS PRODUCTION COMPANY

9. API Well No.
30-039-25570

3. Address and Telephone No.
PO BOX 3102 MS 25-2, TULSA, OK 74101 (918) 573-6254

10. Field and Pool, or Exploratory Area
BLANCO MV/BASIN DK

4. Location of Well (Footage, Sec., T., R., M., or Survey Description)
890' FSL & 920' FEL, SW/4 SE/4 SEC 12-T31N-R06W

11. County or Parish, State
RIO ARRIBA, NM

CHECK APPROPRIATE BOX(s) TO INDICATE NATURE OF NOTICE, REPORT, OR OTHER DATA

TYPE OF SUBMISSION

- ☒ X Notice of Intent
☐ Subsequent Report
☐ Final Abandonment

TYPE OF ACTION

Abandonment
Recompletion
Plugging Back
Casing Repair
Altering Casing
Other Commingle

Change of Plans
New Construction
Non-Routine Fracturing
Water Shut-Off
Conversion to Injection
Dispose Water
(Note: Report results of multiple completion on Well Completion or Recompletion Report and Log form.)

13. Describe Proposed or Completed Operations (Clearly state all pertinent details, and give pertinent dates, including estimated date of starting any proposed work. If well is directionally drilled, give subsurface locations and measured and true vertical depths for all markers and zones pertinent to this work.)*

Williams Production Company proposes to commingle the MV/DK zones in the above well per the attached procedure. Work will begin as soon as approval is received.

DHC 2339 AZ

14. I hereby certify that the foregoing is true and correct

Signed Tracy Ross
Tracy Ross

Title Sr. Production Analyst

Date November 28, 2006

(This space for Federal or State office use)

Approved by

Joe Hamitt

Title

Geo

Date

12-8-06

Conditions of approval, if any:

Title 18 U.S.C. Section 1001, makes it a crime for any person knowingly and willfully to make to any department or agency of the United States any false, fictitious or fraudulent statements or representations as to any matter within its jurisdiction.

NMOCD



Exploration & Production

Production Allocation Recommendation Rosa #30 (MV/DK)

WELLNAME: Rosa #30
LOCATION: SW/4 SE/4 Sec.12, T31N,R06W
API No.: 30-039-25570

FIELD: Rosa DK & Blanco MV
COUNTY: SAN JUAN, NM
Date: April 4, 2006

Current Status: The Rosa #30 is currently a dual completion well producing from the Dakota and Mesaverde formations. The Production Optimization and Enhancement Team recommends commingling this well upon completion of the workover currently underway.

Commingle Procedure:

- Dakota tubing will be pulled
- MesaVerde tubing will be pulled
- Production packer will be removed
- Well will be cleaned out to PBTD
- A single string of 2-3/8" tubing will be run to ~8200'
- One set of wellhead facilities will be removed
- Well will be produced as a MV/DK commingle

Allocation Method: Historic production data from both zones on this well was gathered and analyzed. Monthly production data from Jan 1999 to June 2002 was considered as this represented a time when both zones appear to be free from loading problems and each zone was producing optimally. During this time frame the Dakota accounted for approximately 75.2% of the total production of the well, while the MesaVerde contributed the remaining 24.8% during the same time.

From Jan 1999 – Jun 2002

Total Production from well = 469.385 Mcf

Total Production from DK = 352.959 Mcf

Total Production from MV = 116.426 Mcf

DK allocation = DK prod / Total prod = 352.959 Mcf / 469.385 Mcf = **75.2%**

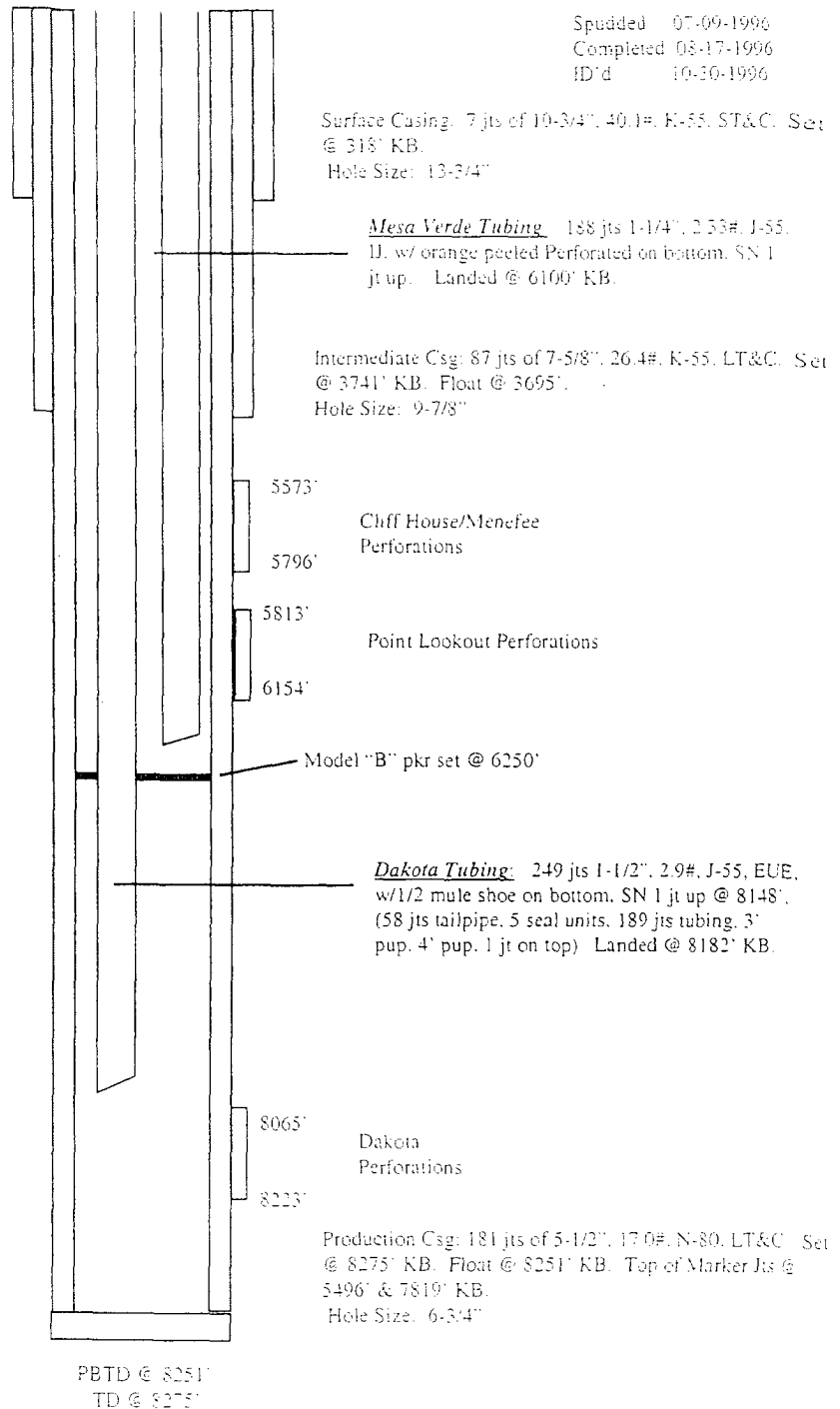
MV allocation = MV prod / Total prod = 116.426 Mcf / 469.385 Mcf = **24.8%**

CURRENT
ROSA UNIT #30
BLANCO MV/BASIN DK

Location: Sec. 12/Oil T31N, R66W
 890' FSL, 920' FEL
 Rio Arriba, NM
 Elevation: 6490' GR
 API No: 30-039-25570
 KB: 14'

Spudded 07-09-1996
 Completed 08-17-1996
 ID'd 10-30-1996

Tops	Depth
Ojo Alamo	2603'
Fruitland	3162'
Pictured Cliffs	3554'
Lewis	3606'
Cliff House	5558'
Menefee	5608'
Point Lookout	5812'
Gallup	N/L
Dakota	8051'



Stimulation:

Cliff House/Menefee: 5573' - 5796' (41, 0.36" holes)
 80,000# of 20/40 Arizona sand in 1766 BBL's of slick water. AIR = 87 BPM.

Point Lookout: 5813' - 6154' (63, 0.36" holes)
 80,000# of 20/40 Arizona sand in 1951 BBL's of slick water. AIR = 105 BPM.

Dakota 8065' - 8223' 2 spf (24, 0.36" holes)
 147,000# 20/40 Ottawa and 10,000# super DC resin coated sand in 1196 of 60 qual foam w/30# CMCHPG X-linked w/Zirconium. AIR = 32 BPM.

HOLE SIZE	CASING	CEMENT	CMT TOP
13-3/4"	10-3/4"	220 s x (260 cf)	Surface
9-7/8"	7-5/8"	840 s x (1544 cf)	Surface
6-3/4"	5-1/2"	440 s x (612 cf)	3200' CBL ??

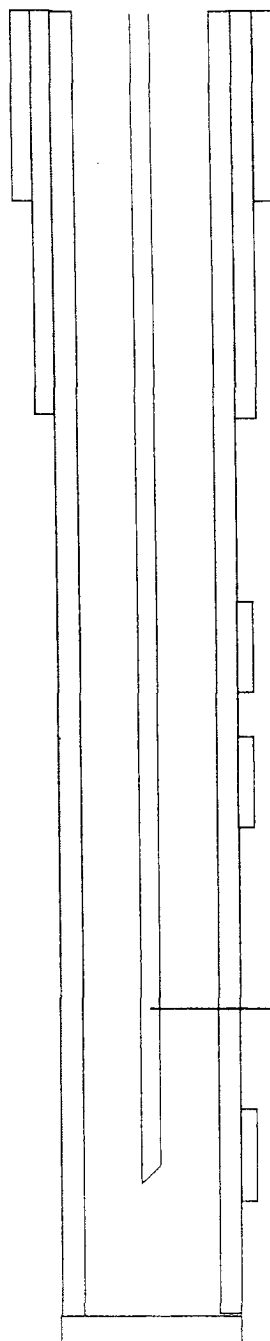
LA 2/4/2005

PROPOSED
ROSA UNIT #30
BLANCO MV/BASIN DK Commingle

Location: Sec. 12/Oil T31N. R66W
 890' FSL. 926' FEL
 Rio Arriba, NM
 Elevation: 6490' GR
 API No: 30-030-25570
 KB: 14'

Spudded 07-09-1996
 Completed 08-17-1996
 ID'd 10-30-1996
 Commingle 04-03-2006

<i>Tops</i>	<i>Depth</i>
Ojo Alamo	2603'
Fruitland	3162'
Pictured Cliffs	3354'
Lewis	3606'
Cliff House	5558'
Menefee	5608'
Point Lookout	5812'
Gallup	N/L
Dakota	8051'



Surface Casing: 7 jts of 10-3/4", 40 1#, K-55, ST&C. Set @ 318' KB. Hole Size: 13-3/4"

Intermediate Csg. 87 jts of 7-5/8", 26.4#, K-55, LT&C. Set @ 3741' KB. Float @ 3695'. Hole Size: 9-7/8"

5573'
 Cliff House/Menefee Perforations
 5796'
 5813'
 Point Lookout Perforations
 6154'

Tubing: ~264 jts 2-3/8", 4.7#, J-55, EUE, w/1/2 mule shoe on bottom. SN 1 jt up Landed @ 8200' KB.

8065'
 Dakota Perforations
 8223'

Production Csg: 181 jts of 5-1/2", 17.0#, N-80, LT&C. Set @ 8275' KB. Float @ 8251' KB. Top of Marker Jts @ 5496' & 7319' KB. Hole Size: 6-3/4"

PBTD @ 8251'
 TD @ 8275'

Stimulation:

Cliff House/Menefee: 5573' - 5796' (41, 0.36" holes) 80,000# of 20/40 Arizona sand in 1766 BBL's of slick water. AIR = 87 BPM.

Point Lookout: 5813' - 6154' (63, 0.36" holes) 80,000# of 20/40 Arizona sand in 1951 BBL's of slick water. AIR = 105 BPM.

Dakota 8065' - 8223' 2 spf (24, 0.36" holes) 147,000# 20/40 Ottawa and 10,000# super DC resin coated sand in 1196 of 60 quat foam w/30# CMCHPG X-linked w/Zirconium. AIR = 32 BPM

HOLE SIZE	CASING	CEMENT	CMT TOP
13-3/4"	10-3/4"	220 s x (260 cft)	Surface
9-7/8"	7-5/8"	840 s x (1544 cft)	Surface
6-3/4"	5-1/2"	440 s x (612 cft)	3200' CBL??

RLG 4.7.2006