

UNITED STATES  
DEPARTMENT OF THE INTERIOR  
BUREAU OF LAND MANAGEMENT

FORM APPROVED  
OMB No. 1004-0135  
Expires January 31, 2004

**SUNDRY NOTICES AND REPORTS ON WELLS**  
*Do not use this form for proposals to drill or to re-enter an abandoned well. Use Form 3160-3 (APD) for such proposals.*

**SUBMIT IN TRIPLICATE - Other instructions on reverse side**

1. Type of Well

☐ Oil Well ☒ Gas Well ☐ Other

2. Name of Operator

**McElvain Oil & Gas Properties, Inc.**

3a. Address

**1050 17th Street #1800 Denver, CO 80265**

3b. Phone No. (include area code)

**303-893-0933**

4. Location of Well (Footage, Sec., T., R., M., or Survey Description)

**1780' FSL & 2120' FWL Sec. 35 T26N R2W NMPM**

5. Lease Serial No.

**NMNM28709**

6. If Indian, Allottee or Tribe Name

7. If Unit or CA/Agreement, Name and/or No.

8. Well Name and No.

**Divide #3**

9. API Well No.

**30-039-24048**

10. Field and Pool, or Exploratory Area

**Blanco Mesaverde**

11. County or Parish, State

**Rio Arriba County, NM**

**12. CHECK APPROPRIATE BOX(ES) TO INDICATE NATURE OF NOTICE, REPORT, OR OTHER DATA**

TYPE OF SUBMISSION	TYPE OF ACTION			
<input checked="" type="radio"/> Notice of Intent	<input type="checkbox"/> Acidize	<input type="checkbox"/> Deepen	<input type="checkbox"/> Production (Start/Resume)	<input type="checkbox"/> Water Shut-Off
<input type="radio"/> Subsequent Report	<input type="checkbox"/> Alter Casing	<input type="checkbox"/> Fracture Treat	<input type="checkbox"/> Reclamation	<input type="checkbox"/> Well Integrity
<input type="radio"/> Final Abandonment Notice	<input type="checkbox"/> Casing Repair	<input type="checkbox"/> New Construction	<input type="checkbox"/> Recomplete	<input type="checkbox"/> Other
	<input type="checkbox"/> Change Plans	<input checked="" type="checkbox"/> Plug and Abandon	<input type="checkbox"/> Temporarily Abandon	
	<input type="checkbox"/> Convert to Injection	<input type="checkbox"/> Plug Back	<input type="checkbox"/> Water Disposal	

13. Describe Proposed or Completed Operation (clearly state all pertinent details, including estimated starting date of any proposed work and approximate duration thereof. If the proposal is to deepen directionally or recompleat horizontally, give subsurface locations and measured and true vertical depths of all pertinent markers and zones. Attach the Bond under which the work will be performed or provide the Bond No. on file with BLM/BIA. Required subsequent reports shall be filed within 30 days following completion of the involved operations. If the operation results in a multiple completion or recompleat in a new interval, a Form 3160-4 shall be filed once testing has been completed. Final Abandonment Notices shall be filed only after all requirements, including reclamation, have been completed, and the operator has determined that the site is ready for final inspection.)

McElvain Oil and Gas Properties, Inc. proposes to permanently plug and abandon this well as per the attached procedure.

14. I hereby certify that the foregoing is true and correct

Name (Printed/Typed)

**John D. Steuble**

Title **Engineering Manager**

Signature

*John D. Steuble*

Date **June 17, 2003**

**THIS SPACE FOR FEDERAL OR STATE OFFICE USE**

Approved by

**/s/ David R. Sitzler**

Division of **Multi-Resources**

Date

**AUG 21 2003**

Conditions of approval, if any, are attached. Approval of this notice does not warrant or certify that the applicant holds legal or equitable title to those rights in the subject lease which would entitle the applicant to conduct operations thereon.

Office

Title 18 U.S.C. Section 1001 and Title 43 U.S.C. Section 1212, make it a crime for any person knowingly and willfully to make to any department or agency of the United States any false, fictitious or fraudulent statements or representations as to any matter within its jurisdiction.

(Instructions on reverse)

# McElvain Oil and Gas Properties, Inc.

## Divide #3

### P&A procedure

Location: 1780' FSL and 2120' FWL. Sec. 35 T26N R2W NMPM

#### Casing:

Surface:

12 1/4" hole at 226'.

9 5/8" casing set at 226'.

Cemented with 125 sx (147.5 cuft) Class B with 2% CC. Circulated 1 bbl.

Production:

7 7/8" hole at 8150.

5 1/2" casing set at 8146. 15.5 #/ft and 17 #/ft 8rd LT&C ERW. Set at 8146. DV tools at 6393 and at 4082.

1<sup>st</sup> stage: 220 sx (308 cuft) 50/50 poz mix, 2% gel, 6 1/4 #/sx gilsonite, 1/4 #/sx celloflake

Cement top at 6888. (bond log)

2<sup>nd</sup> stage: 125 sx 65/35 poz, 12% gel, 6 1/4 #/sx gilsonite, 1/4 #/sx celloflake followed by

275 sx 50/50 pozmix, 2% gel, 6 1/4 #/sx gilsonite, 1/4 #/sx celloflake. Total slurry 678 cuft.

Cement top at 4560 (bond log)

3<sup>rd</sup> stage: 625 sx 65/35 pozmix, 12% gel, 6 1/4 #/sx gilsonite, 1/4 #/sx celloflake. (1533 cuft)

Circulated 10 bbls.

#### Formation Tops

Nacimiento	2070
Ojo Alamo	3547
Fruitland	3752
Pictured Cliffs	3890
Lewis	4070
Cliff House	5716
Menefee	5778
Point Lookout	6080
Mancos	6356
Niobrara	7110
Sanostee	7822

#### Perforations and Plugs

7130 to 7903 (58 holes)

CIBP at 7125 pressure tested to 500 psi capped with 50' cement.

CIBP at 6356 capped with 50' of cement.

6116 to 6126 (20 holes)

CIBP at 6110, pressure test to 500 psi and capped with 25' of cement.

5948 to 5988 (20 holes)

5753 to 5772 (38 holes)

#### Tubing:

Notch collar, 1 jt, SN, 181 jts 2 3/8 set at 5986.

## Divide #3

### P&A Procedure

1. Rig up service unit.
2. POOH and tally tubing.
3. RIH with tubing and tubing set CIBP.
4. Set CIBP @ 5716'
5. Circulate hole with fresh water.
6. Pressure test CIBP and casing to 500 psig for 30 minutes.
7. POOH with tubing and setting tool
8. RIH with tubing open ended to CIBP @ 5716'.
9. Cap CIBP with 10 sx cement (80').
10. Lay down tubing to 4000'.
11. Spot 20 sx cement plug from 4000' to 3830' (170').
12. Lay down tubing to 3600'
13. Spot 20xs cement plug from 3600' to 3430' (170').
14. Lay down tubing to 2120'.
15. Spot 20 sx cement plug from 2120' to 1950' (170').
16. Lay down tubing to 280'.
17. Spot 35 sx cement plug from 280' to surface.
18. Wash out last joints of tubing.
19. Dig out wellhead and cut off well head. Install dry hole marker.
20. Reclaim location.

3725' SH  
Top wall @ 3776'

# DIVIDE #3

NE/SW Section 35 T26N-R2W  
1780' FSL & 2120' FWL  
Rio Arriba County NM  
Current Configuration

(SQZD) 96 Perfs 3890-3914  
(SQZD) 88 Perfs 3950-3972

38 Perfs 5753-5772  
20 Perfs 5848-5998  
20 Perfs 6116-6126

58 Perfs 7130-7923 (LE)

SURFACE CASING in 12 1/4" hole  
9 5/8" 36# J-55 @ 226'  
147.5 cf Class 8 +2% CaCl  
Circulated to Surface

625 sx 65-35 POZ +12% Gel  
50 sx 50-50 POZ +2% Gel  
1533 cu ft CIRCULATED to SURFACE

125 sx 65-35 POZ +12% Gel  
275 sx 50-50 POZ +2% Gel  
678 cu ft

CIBP @ 6110'  
25' Cement Cap  
Tested to 500 PSI

CIBP @ 6356'  
50' Cement Cap  
6393' DV Tool

TOC @ 6868' (CBL)

CIBP @ 7125'  
50' Cement Cap  
Tested to 500 PSI

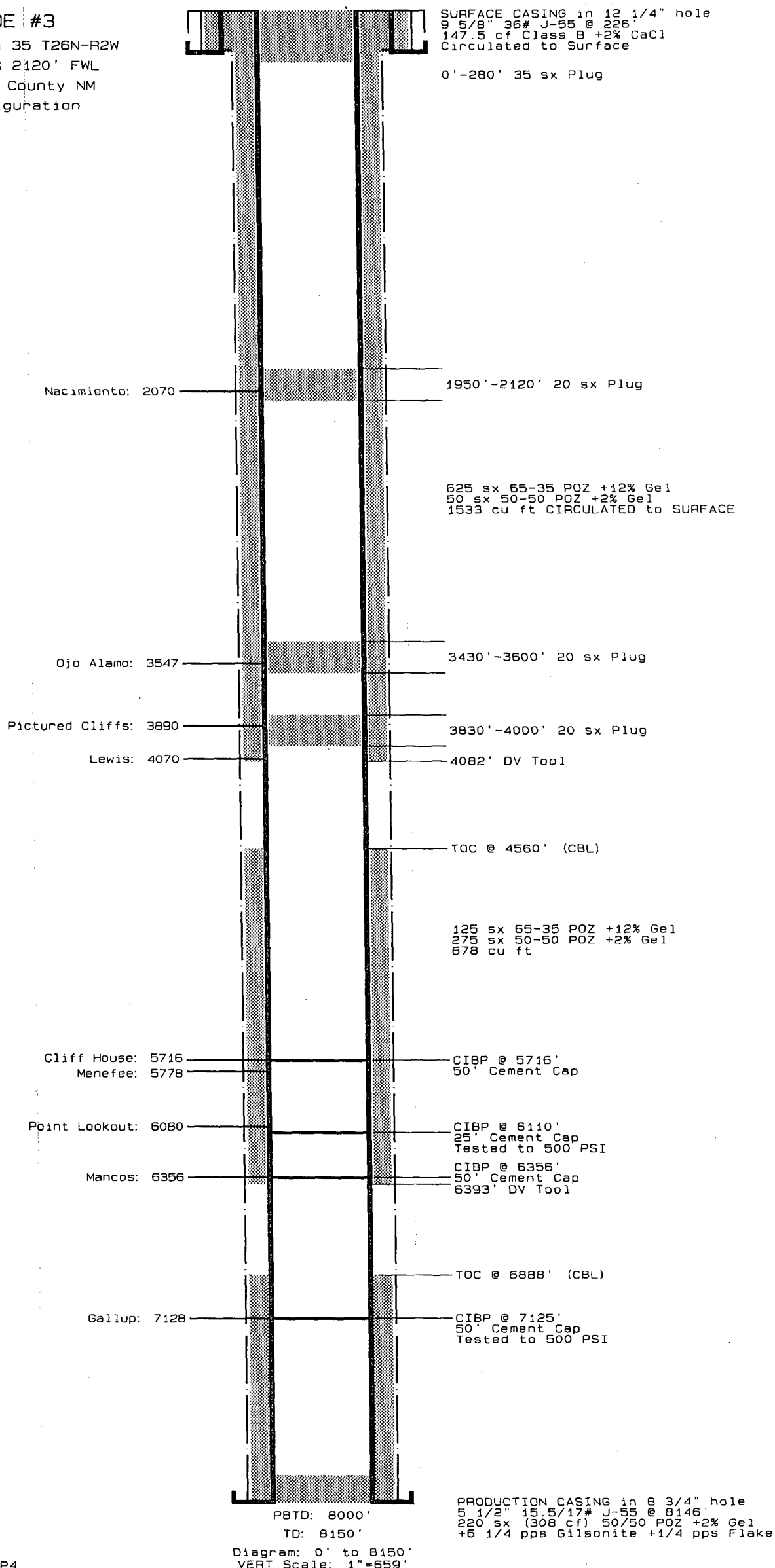
PBTD: 8000'  
TD: 8150'

Diagram: 0' to 8150'  
VERT Scale: 1"=659'

PRODUCTION CASING in 8 3/4" hole  
5 1/2" 15.5/17# J-55 @ 8146'  
220 sx (308 cf) 50/50 POZ +2% Gel  
+6 1/4 pps Gilsontite +1/4 pps Flake

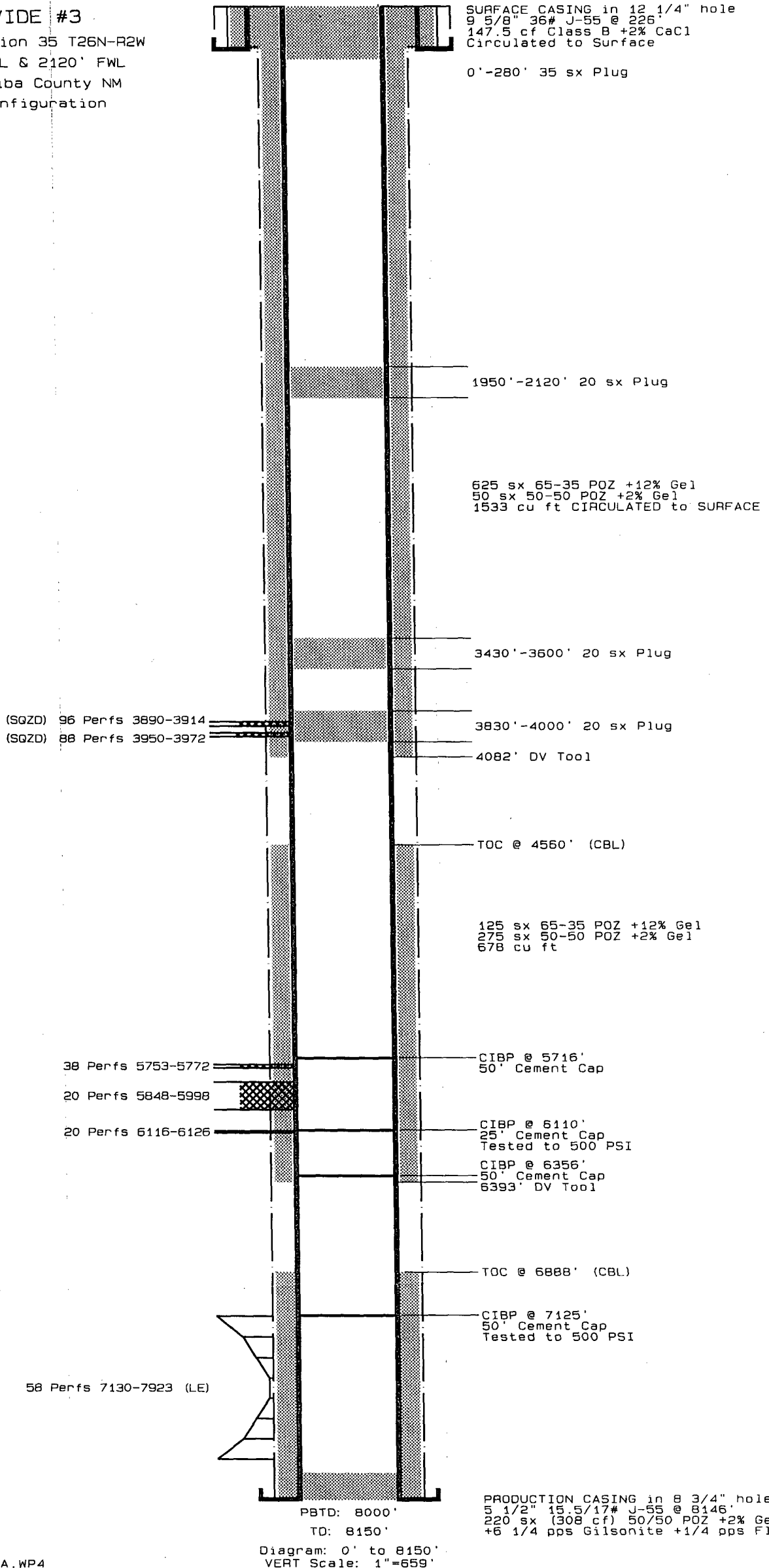
# DIVIDE #3

NE/SW Section 35 T26N-R2W  
1780' FSL & 2120' FWL  
Rio Arriba County NM  
P&A Configuration



# DIVIDE #3

NE/SW Section 35 T26N-R2W  
1780' FSL & 2120' FWL  
Rio Arriba County NM  
PSA Configuration



CONDITIONS OF APPROVAL FOR PERMANENT ABANDONMENT

Operator McElvain O & G Prop. Well Name Divide #3

1. Plugging operations authorized are subject to the "General Requirements for Permanent Abandonment of Wells on Federal Leases."
2. For wells on Federal leases, Al Yepa with the Cuba Field Office is to be notified at least 24 hours (48 hours if possible) before the plugging operations commence. His phone number is (505) 289-3748. Office hours are 7:45 a.m. to 4:30 p.m.

For wells on Jicarilla leases notify Bryce Hammond with the Jicarilla Apache Tribe at least 24 hours (48 hours if possible) before the plugging operations commence. His phone number is (505) 759-3485.

3. Blowout prevention equipment is required.
4. The following modifications to your plugging program are to be made :

Plug #1: The CIBP needs to be moved to set between 5703' and 5653'.