

District I
1625 N. French Dr., Hobbs, NM 88240
District II
1301 W. Grand Avenue, Artesia, NM 88210
District III
1000 Rio Brazos Road, Aztec, NM 87410
District IV
1220 S. St. Francis Dr., Santa Fe, NM 87505

State of New Mexico
Energy Minerals and Natural Resources

Oil Conservation Division
1220 South St. Francis Dr.
Santa Fe, NM 87505

Submit to appropriate District Office

☐ AMENDED REPORT

APPLICATION FOR PERMIT TO DRILL, RE-ENTER, DEEPEN, PLUGBACK, OR ADD A ZONE

¹ Operator Name and Address Devon Energy Production Company, L.P. PO Box 6459 Navajo Dam, NM 87419		² OGRID Number 6137
³ Property Code 19641		⁴ API Number 30 - 045- 34137
⁵ Property Name Northeast Blanco Unit		⁶ Well No. 47N
⁹ Proposed Pool 1 Basin Dakota		¹⁰ Proposed Pool 2 Blanco Mesaverde

⁷ Surface Location

UL or lot no.	Section	Township	Range	Lot Idn	Feet from the	North/South line	Feet from the	East/West line	County
K	32	31N	7W		2,015	South	1,800	West	San Juan

⁸ Proposed Bottom Hole Location If Different From Surface

UL or lot no.	Section	Township	Range	Lot Idn	Feet from the	North/South line	Feet from the	East/West line	County
M / 4	32	31N	7W		760	South	760	West	San Juan

Additional Well Information

¹¹ Work Type Code N	¹² Well Type Code G	¹³ Cable/Rotary Rotary	¹⁴ Lease Type Code State	¹⁵ Ground Level Elevation 6,379'
¹⁶ Multiple Y	¹⁷ Proposed Depth 8,411'	¹⁸ Formation Dakota/Mesaverde	¹⁹ Contractor	²⁰ Spud Date Unknown
Depth to Groundwater >100'		Distance from nearest fresh water well >1,000'		Distance from nearest surface water >1,000'
Pit: Liner: Synthetic <input checked="" type="checkbox"/> 12_mils thick Clay <input type="checkbox"/> Pit Volume: _____ bbls Drilling Method: Closed-Loop System <input type="checkbox"/> Fresh Water <input checked="" type="checkbox"/> Brine <input type="checkbox"/> Diesel/Oil-based <input type="checkbox"/> Gas/Air <input checked="" type="checkbox"/>				

²¹ Proposed Casing and Cement Program

Hole Size	Casing Size	Casing weight/foot	Setting Depth	Sacks of Cement	Estimated TOC
12 1/4"	9 5/8"	32#	0-285'	200	Surface
8 3/4"	7"	23#	0-3,989'	575	Surface
6 1/4"	4 1/2"	11.6#	0-TD	700	Surface

²² Describe the proposed program. If this application is to DEEPEN or PLUG BACK, give the data on the present productive zone and proposed new productive zone. Describe the blowout prevention program, if any. Use additional sheets if necessary.

²³ I hereby certify that the information given above is true and complete to the best of my knowledge and belief. I further certify that the drilling pit will be constructed according to NMOCD guidelines ☒, a general permit ☐, or an (attached) alternative OCD-approved plan ☐.

Sign: 

Printed name: Melisa Castro

Title: Senior Staff Operations Technician

E-mail Address: Melisa.castro@dmn.com

Date: 1-4-07

Phone: 405-552-7917

OIL CONSERVATION DIVISION

Approved by:

Title: DEPUTY OIL & GAS INSPECTOR, DIST. 6

Approval Date: JAN 08 2007 Expiration Date: JAN 08 2008

Conditions of Approval Attached: 1. FOR directional survey

8 1/8/07

District I
PO Box 1980, Hobbs NM 88241-1980
District II
PO Drawer KK, Artesia, NM 87211-0719
District III
1000 Rio Brazos Rd., Aztec, NM 87410
District IV
PO Box 2088, Santa Fe, NM 87504-2088

State of New Mexico
Energy, Minerals & Natural Resources Department

OIL CONSERVATION DIVISION
PO Box 2088
Santa Fe, NM 87504-2088

Form C-102
Revised February 21, 1994
Instructions on back
Submit to Appropriate District Office
State Lease - 4 Copies
Fee Lease - 3 Copies

☐ AMENDED REPORT

WELL LOCATION AND ACREAGE DEDICATION PLAT

¹ API Number 30-04534137	² Pool Code 71599/72319	³ Pool Name Basin Dakota/Blanco Mesaverde
⁴ Property Code 19641	⁵ Property Name NEBU	⁶ Well Number # 47N
⁷ OGRID No. 6137	⁸ Operator Name Devon Energy Production Company, L.P.	⁹ Elevation 6379

¹⁰ Surface Location

UL or Lot No. K	Section 32	Township 31 N	Range 7 W	Lot Idn	Feet from the 2015	North/South line SOUTH	Feet from the 1800	East/West line WEST	County SAN JUAN
---------------------------	----------------------	-------------------------	---------------------	---------	------------------------------	----------------------------------	------------------------------	-------------------------------	---------------------------

¹¹ Bottom Hole Location If Different From Surface

⁷ UL or lot no. M	Section 32	Township 31 N	Range 7 W	Lot Idn (4)	Feet from the 760	North/South line SOUTH	Feet from the 760	East/West line WEST	County SAN JUAN
----------------------------------------	----------------------	-------------------------	---------------------	-----------------------	-----------------------------	----------------------------------	-----------------------------	-------------------------------	---------------------------

¹² Dedicated Acres W/ 333.11	¹³ Joint or Infill	¹⁴ Consolidation Code	¹⁵ Order No.
---------------------------------------------------	-------------------------------	----------------------------------	-------------------------

NO ALLOWABLE WILL BE ASSIGNED TO THIS COMPLETION UNTIL ALL INTERESTS HAVE BEEN CONSOLIDATED
OR A NON-STANDARD UNIT HAS BEEN APPROVED BY THE DIVISION

<div><p>¹⁶</p><p>1800'</p><p>Azimuth - 219°39' 1630'</p><p>Bottom Hole Location 760' F/SL 760' F/WL</p><p>2015'</p><p>5280(R)</p><p>32</p><p>5280(R)</p></div>	<div><p>¹⁷ OPERATOR CERTIFICATION</p><p>I hereby certify that the information contained herein is true and complete to the best of my knowledge and belief.</p><p><i>[Signature]</i> Signature Melisa Castro Printed Name Sr. Staff Operations Tech. Title January 4, 2007 Date</p><p>¹⁸ SURVEYOR CERTIFICATION</p><p>I hereby certify that the well location shown on this plat was plotted from field notes of actual surveys made by me or under my supervision, and that the same is true and correct to the best of my belief.</p><p>July 27, 2006 Date of Survey Signature and Seal of Professional Surveyor</p><p>7016 Certificate Number</p><p>7016 Certificate Number</p></div>
-------------------------------------------------------------------------------------------------------------------------------------------------------------------------------	------------------------------------------------------------------------------------------------------------------------------------------------------------------------------------------------------------------------------------------------------------------------------------------------------------------------------------------------------------------------------------------------------------------------------------------------------------------------------------------------------------------------------------------------------------------------------------------------------------------------------------------------------------------------------------------------------------------------------------------------------------------------------------------------------

Submit 3 Copies To Appropriate District Office
District I
1625 N. French Dr., Hobbs, NM 88240
District II
1301 W. Grand Ave., Artesia, NM 88210
District III
1000 Rio Brazos Rd., Aztec, NM 87410
District IV
1220 S. St. Francis Dr., Santa Fe, NM 87505

State of New Mexico
Energy, Minerals and Natural Resources

OIL CONSERVATION DIVISION
1220 South St. Francis Dr.
Santa Fe, NM 87505

Form C-103

March 4, 2004

WELL API NO. 30-045-34137
ROVD JAN 07
OIL CONSERV. DIV.

5. Indicate Type of Lease

STATE ☒ FEE ☐

6. State Oil & Gas Lease No.
E-292-9

7. Lease Name or Unit Agreement Name

NORTHEAST BLANCO UNIT

8. Well Number

47N

9. OGRID Number

6137

10. Pool name or Wildcat

Basin Dakota/Blanco Mesaverde

SUNDRY NOTICES AND REPORTS ON WELLS

(DO NOT USE THIS FORM FOR PROPOSALS TO DRILL OR TO DEEPEN OR PLUG BACK TO A DIFFERENT RESERVOIR. USE "APPLICATION FOR PERMIT" (FORM C-101) FOR SUCH PROPOSALS.)

1. Type of Well:

Oil Well ☐ Gas Well ☒ Other

2. Name of Operator

Devon Energy Production Company, L.P.

3. Address of Operator

PO Box 6459, Navajo Dam, NM 87419

4. Well Location

Unit Letter K : 2,015 feet from the South line and 1,800 feet from the West line

Section 32 Township 31N Range 7W NMPM County - SAN JUAN

11. Elevation (Show whether DR, RKB, RT, GR, etc.)
GR 6,379'

Pit or Below-grade Tank Application (For pit or below-grade tank closures, a form C-144 must be attached)

Pit Location: UL K Sect 32 Twp 31N Rng 7W Pit type Drilling Depth to Groundwater >100' Distance from nearest fresh water well >1000'

Distance from nearest surface water >1000' Below-grade Tank Location UL Sect Twp Rng ;

feet from the line and feet from the line

12. Check Appropriate Box to Indicate Nature of Notice, Report or Other Data

NOTICE OF INTENTION TO:

PERFORM REMEDIAL WORK ☐ PLUG AND ABANDON ☐

TEMPORARILY ABANDON ☐ CHANGE PLANS ☐

PULL OR ALTER CASING ☐ MULTIPLE COMPLETION ☐

OTHER: CONSTRUCT DRILLING PIT ☒

SUBSEQUENT REPORT OF:

REMEDIAL WORK ☐ ALTERING CASING ☐

COMMENCE DRILLING OPNS. ☐ PLUG AND ABANDONMENT ☐

CASING TEST AND CEMENT JOB ☐

OTHER: ☐

13. Describe proposed or completed operations. (Clearly state all pertinent details, and give pertinent dates, including estimated date of starting any proposed work). SEE RULE 1103. For Multiple Completions: Attach wellbore diagram of proposed completion or recompletion.

14.

Devon Energy will be constructing a lined drilling pit. The closure of said pit will be in accordance with the NMOCD regulations with the cutting of the liner applying to the BLM rules.

I hereby certify that the information above is true and complete to the best of my knowledge and belief. I further certify that any pit or below-grade tank has been/will be constructed or closed according to NMOCD guidelines ☒, a general permit ☐ or an (attached) alternative OCD-approved plan ☐.

SIGNATURE [Signature] TITLE Sr. Staff Operations Technician DATE 1-4-07

Type or print name Melisa Castro E-mail address: Melisa.castro@dmn.com Telephone No. 405-552-7917

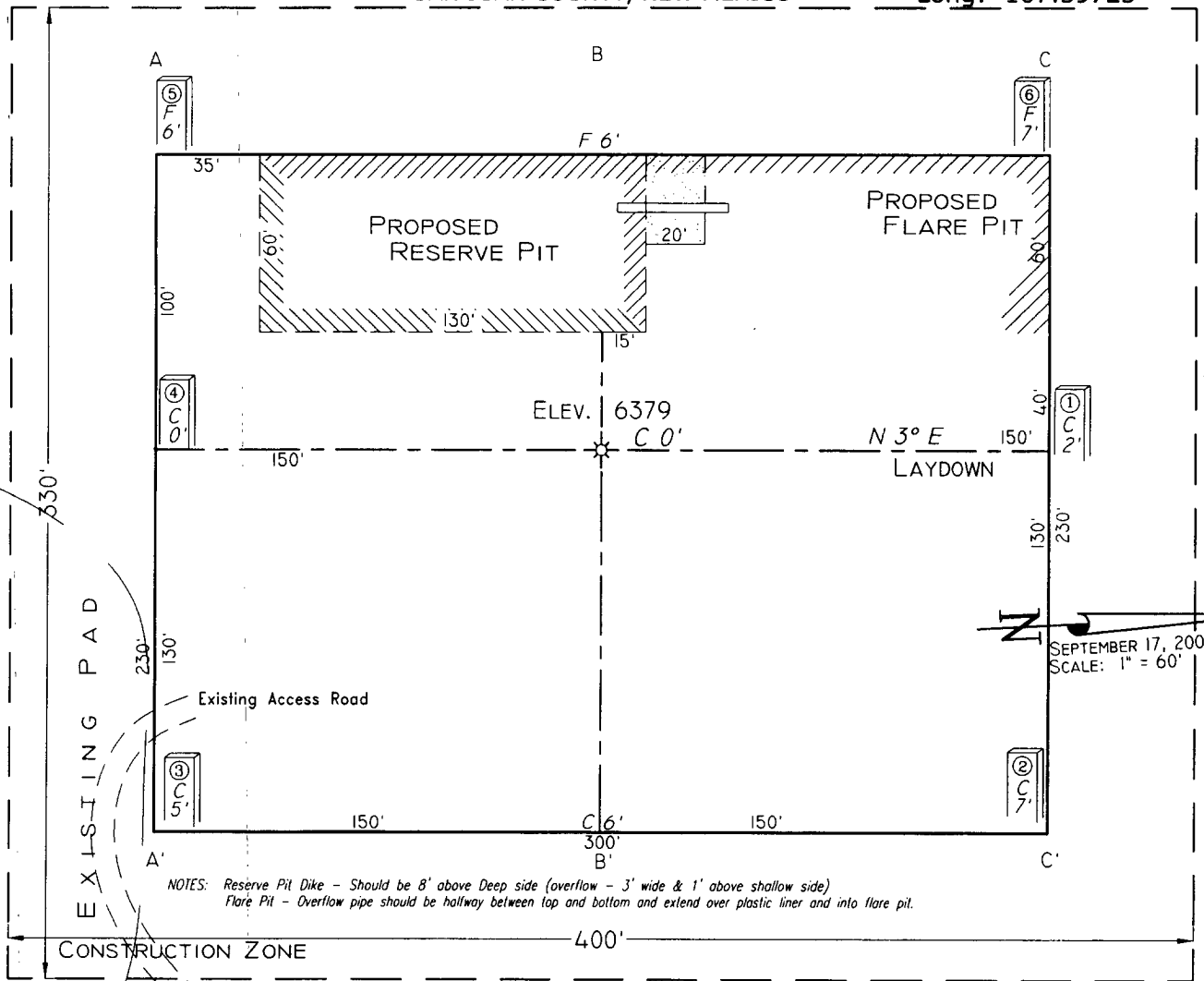
(This space for State use)

APPROVED BY [Signature] TITLE DEPUTY OIL & GAS INSPECTOR, DIST. 6 DATE JAN 08 2007
Conditions of approval, if any:

PAD LAYOUT PLAN & PROFILE
DEVON ENERGY PRODUCTION COMPANY, L.P.

Nebu # 47N
 2015' F/SL 1800' F/WL
 SEC. 32, T31N, R7W, N.M.P.M.
 SAN JUAN COUNTY, NEW MEXICO

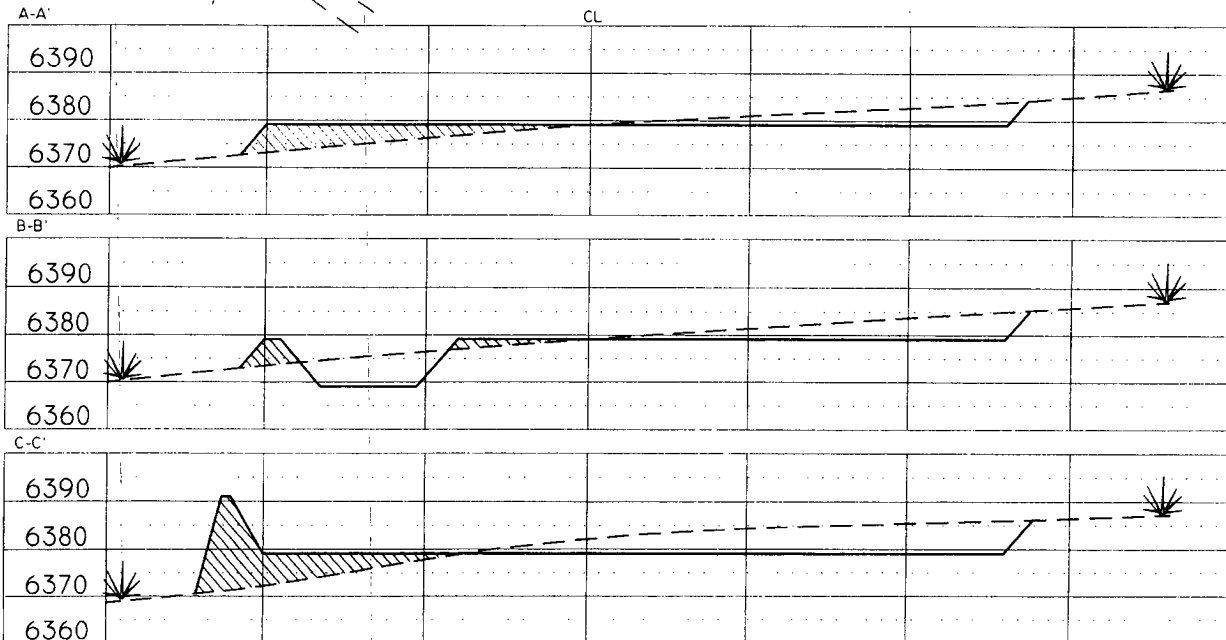
Lat: 36.85436°
 Long: 107.59725° (83)



NOTES: Reserve Pit Dike - Should be 8' above Deep side (overflow - 3' wide & 1' above shallow side)
 Flare Pit - Overflow pipe should be halfway between top and bottom and extend over plastic liner and into flare pit.

Area of Construction Zone - 330'x400' or 3.03 acres, more or less.

SCALE: 1"=60'-HORIZ.
 1"=40'-VERT.



NOTE: Contractor should call One-Call for location of any marked or unmarked buried pipelines or cables on well pad and/or access road at least two (2) working days prior to construction.

Cuts and fills shown are approximate - final finished elevation is to be adjusted so earthwork will balance. Corner stakes are approximate and do not include additional areas needed for sideslopes and drainages. Final Pad Dimensions are to be verified by Contractor.

VANN SURVEYS
 P. O. Box 1306
 Farmington, NM

NEBU 47N
Unit K 32-31N-7W
San Juan Co., NM

DRILLING PLAN

1. ESTIMATED TOPS OF IMPORTANT GEOLOGIC MARKERS & ANTICIPATED WATER, OIL, GAS OR MINERAL FORMATIONS:

Formation	TMD (ft)	TVD (ft)	Hydrocarbon/Water Bearing Zones
San Jose	Surface	Surface	
Ojo Alamo	2602	2223	Aquifer
Kirtland	2735	2326	
Fruitland	3297	2815	Gas
Fruitland 1 st Coal	3506	3014	Gas
Pictured Cliffs Tongue	3743	3246	Gas
Pictured Cliffs Main	3784	3287	Gas
Lewis	3889	3392	Gas
Intermediate TD	3989	3492	
Huefanito Bentonite	4542	4045	Gas
Chacra / Otera	4912	4415	Gas
Cliff House	5401	4904	Gas
Menefee	5749	5252	Gas
Point Lookout	6020	5523	Gas
Mancos	6448	5951	Gas
Gallup	7359	6862	Gas
Greenhorn	8077	7580	
Graneros	8123	7626	Gas
Paguate	8255	7758	
Cubero	8266	7769	
Oak Canyon	8342	7845	
Encinal Canyon	8353	7856	

TD	8411	7914	
----	------	------	--

*All shows of fresh water and minerals will be adequately protected and reported.

2. PRESSURE CONTROL EQUIPMENT:

All well control equipment shall be in accordance with Onshore Order #2 for 2M systems.

The minimum specifications for pressure control equipment that will be provided are included on the attached schematic diagram, with a size of 2", and pressure ratings.

- 2000# BOP With Pipe Rams and 2000# BOP With Blind Rams

Auxiliary equipment to be used:

- Upper kelly cock with handle available.

The manifold includes appropriate valves and adjustable chokes. The kill line will have one check valve. Ram type preventers will be pressure tested to full working pressure (utilizing a test plug) or 70% of the internal yield pressure (without a test plug) at:

- Initial installation
- Whenever any seal subject to test pressure is broken
- Following related repairs
- At 30 day intervals

Pipe and blind rams shall be activated each trip.

A BOPE pit level drill will be conducted weekly for each drilling crew.
All tests and drills will be recorded in the drilling log.

The accumulator will have sufficient capacity to close all rams and retain 200 psi above pre-charge pressure without the use of closing unit pumps.

Master controls will be at the accumulator. Anticipated bottom hole pressure is 3400 psi.

3. CASING & CEMENTING PROGRAM:

A. The proposed casing program will be as follows:

TMD	TVD	Hole Size	Size	Grade	Weight	Thread	Condition
0-285'	0-285'	12-1/4"	9-5/8"	H-40	32#	STC	New
0-3989	0-3492	8-3/4"	7"	K-55	23#	LTC	New
0- TD	0- TD	6-1/4"	4-1/2"	J-55	11.6 #	LTC	New

The 9-5/8" surface pipe will be tested to 750 psi. All casing strings below the surface shoe shall be pressure tested to 0.22 psi/ft. of casing string length or 1500 psi, whichever is greater, but not to exceed 70% minimum internal yield.

Surface: The bottom three joints of the surface casing will have a minimum of one centralizer per joint and one centralizer every joint thereafter (Total 5 centralizers estimated)

Intermediate: The bottom three joints of the 7" casing will have a minimum of one centralizer per joint and one centralizer every fifth joint thereafter to above Ojo Alamo with turbolizers below and throughout the Ojo Alamo. (Total 12 centralizers, 3 turbolizers estimated).

Production: The bottom three joints will have a minimum of one centralizer per joint and one centralizer every fifth joint to 3500' (estimated 25 centralizers used). Centralizers will be open bow spring or basket bow spring type.

B. The proposed cementing program will be as follows:

Surface String: Cement will be circulated to surface.

Lead: 200 sx Class "B" with 100% Standard Cement, 2.00% CaCl₂, .25 #/sx Flocele. Density: 15.6 lb/gal; Yield: 1.18 cuft/sx; Water: 5.24 gal/sx

*** Minor variations possible due to existing conditions**

Intermediate String: Cement will be circulated to surface.

Lead: 500 sx 50/50 Poz, Yd-1.45, Water Gal/sx 6.8, Mixed @ 13ppg Foamed W/ N2 Down To 9.0# Additives 2% Gel, 0.2% Versaset, 0.1% Diacel Lwl.

Tail: 75 sx 50/50 Poz, Yd-1.45, Water Gal/Sk 6.8, Additives 2% Gel, 0.2% Versaset, 0.1% Diacel Lwl.

*** Minor variations possible due to existing conditions**

If hole conditions dictate, an alternate, cement design will be used:

Lead: 575 sx 50/50 Poz with 50% Class B Cement, 50% San Juan Poz, .4% Halad-344, .1% CFR-3, 3% Bentonite, 5#/sx Gilsonite, .25#/sx Flocele. Density: 13.0 lb/gal; Yield: 1.46 cuft/sx; Water: 6.42 gal/sx

Tail: 75 sx 50/50 Poz with 94#/sx Standard Cement, 0.3% Halad-344, .25 #/sx Flocele. Density: 15.6 lb/gal; Yield: 1.18 cuft/sx; Water: 5.23 gal/sx

*** Minor variations possible due to existing conditions**

Production String: TOC designed to circulate 1000' into intermediate string, cement will tie into the intermediate casing as a minimum. Volumes may vary with actual well characteristics.

Lead: 250 sx 50/50 Poz with 2% Gel, 0.2% Halad, 0.1% CFR-3, 5 #/sx Gilsonite, 0.25 #/sx Flocele. Mixed at 13 ppg, 1.47 ft 3/sx foamed to 9 ppg, 2.18 ft 3/sx.

Tail: 450 sx 50/50 Poz with 50% Standard Cement, 50% San Juan Poz, 3% Bentonite, 1.40% Halad-9, .10% CFR-3, .10% HR-5, 5 #/sx Gilsonite, 0.25 #/sx Flocele. Density: 13.0 lb/gal; Yield: 1.47 cuft/sx; Water: 6.35 gal/sx *

*** Minor variations possible due to existing conditions**

Actual volumes will be calculated and adjusted with caliper log prior to cementing.

4. DRILLING FLUIDS PROGRAM:

TMD Interval	TVD Interval	Type	Weight (ppg)	Viscosity	pH	Water Loss	Remarks
0-285'	0-285'	Spud-foam	8.4-9.0	29-70	8.0	NC	FW gel, LSND or stiff foam
285'-3,989'	285'-3,492'	Air				NC	
3,989' - TD	3,492' - TD	Air/N2 or Mud	8.5-9.0*	30-50	8.0-10.0	8-810cc @ TD	Low solids-non-dispersed. * min Wt. to control formation pressure

NC = no control

Sufficient quantities of mud material will be maintained on site or be readily accessible for the purpose of assuring well control. SPR will be recorded on daily drilling report after mudding up. Visual mud monitoring will be conducted during operations.

5. EVALUATION PROGRAM:

Logs: Density
Neutron
Induction

In the event open hole logs are not run in the well, a cased hole evaluation log will Be run.

Survey: Deviation surveys will be taken every 500' from 0-TD or first succeeding bit change. The hole will be air drilled from intermediate casing point to TD. The equipment used in this type of operation will not allow for single shot surveys without considerable operational delays. A survey will be taken at TD. Similar wells in this area have not shown significant deviation in this section of the hole.

Cores: None anticipated.

DST's: None anticipated.

6. ABNORMAL CONDITIONS:

The Fruitland Coal will be encountered in the 8-3/4" hole. Estimated formation pressure is 300 psi. No other abnormal pressures and/or temperatures are expected. No hydrogen sulfide should be present.

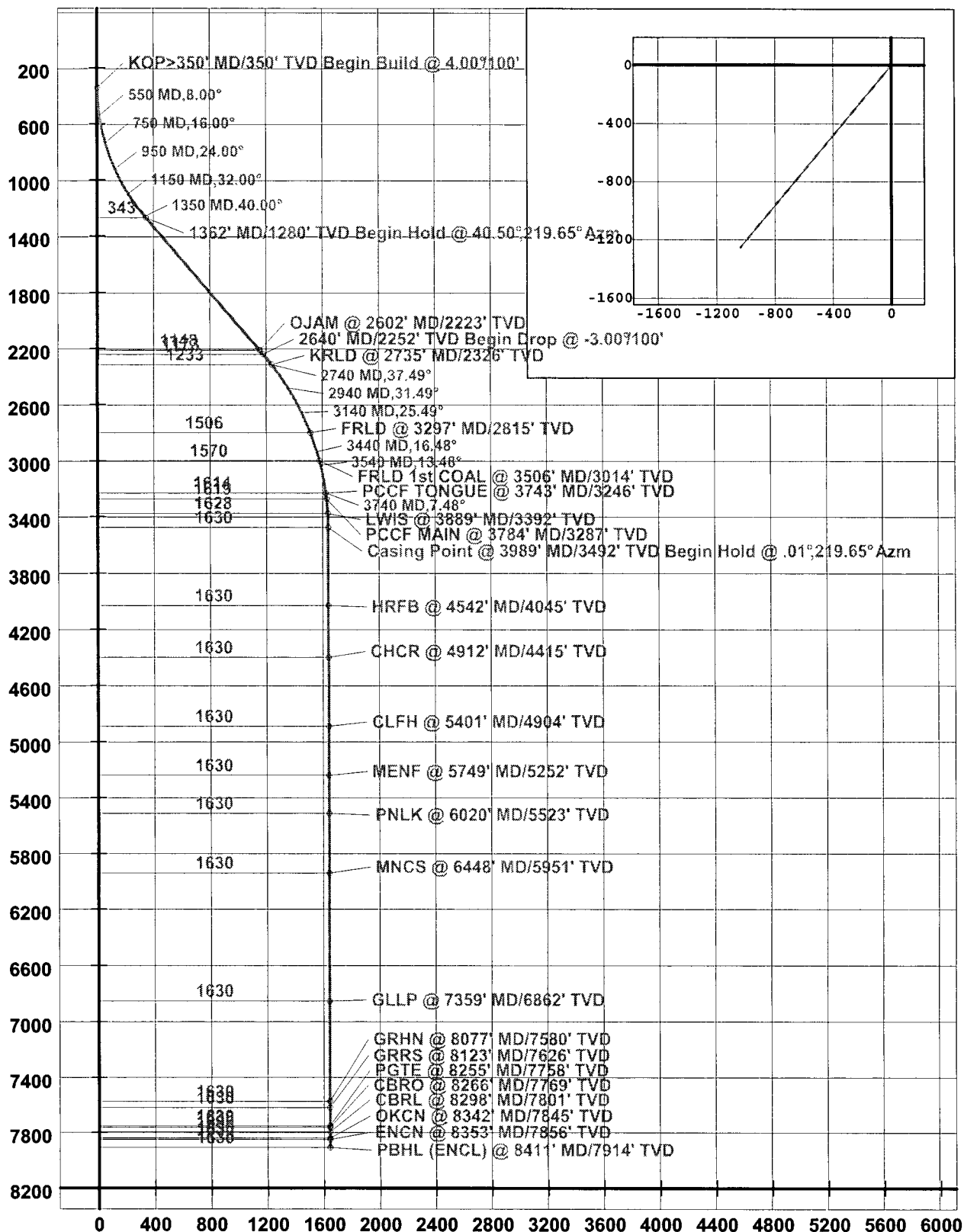
7. OTHER INFORMATION:

The anticipated starting date and duration of the operation will be as follows:

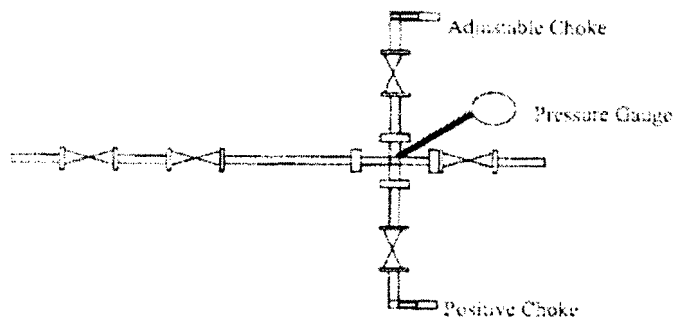
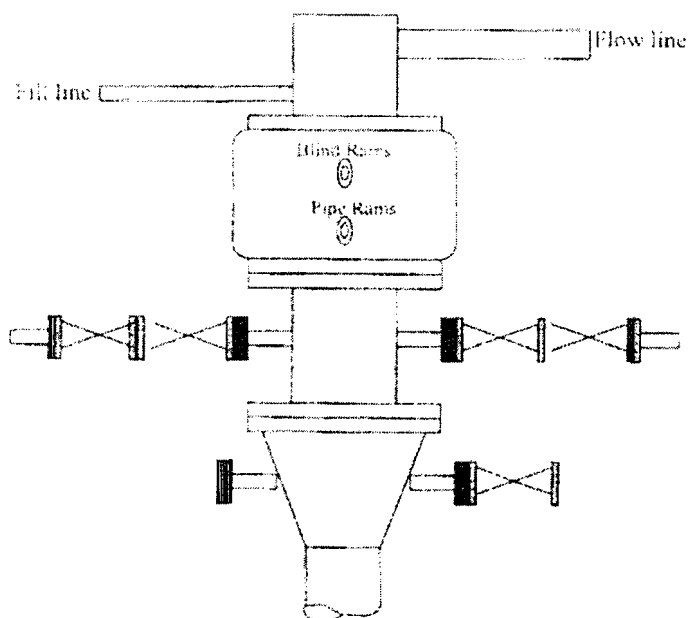
Starting Date: Upon Approval
Duration: 20 days

If the well is completed as a dry hole or as a producer, Well Completion or Recompletion Report and Log (Form 3160-4) will be submitted within 30 days after completion of the well or after completion of operations being performed, in accordance with 43 CFR 3160. Copies of all logs, core descriptions, core analyses, well test data, geologic summaries, sample descriptions, daily drilling reports, daily completion reports, and all other surveys or data obtained and compiled during the drilling, completion, and/or workover operations, will be submitted directly to the Authorized Officer or filed with Form 3160-4.

Company: Devon Energy
 Lease/Well: NEBU 47 N
 Location: San Juan County
 State/Country: NM



Well Control Equipment 2,000 psi Configuration



All well control equipment designed to meet or exceed the Onshore Oil and Gas Order No. 2, BLM 43 CFR 3160 requirements for 2M systems.