

UNITED STATES
DEPARTMENT OF THE INTERIOR
BUREAU OF LAND MANAGEMENT

SUNDRY NOTICES AND REPORTS ON WELLS
*Do not use this form for proposals to drill or to re-enter an
Abandoned well. Use Form 3160-3 (APD) for such proposals.*

FORM APPROVED
OMB No. 1004-0135
Expires November 30, 2000

5. Lease Serial No.

SF-078194

6. Indian tribe or tribe Name

2007 JAN 12

12 AM 9:42

7. Unit or CA/Agreement, Name and/or No.

BLM
210 FARMINGTON NM

SUBMIT IN TRIPLICATE - Other instructions on reverse side

1. Type of Well



Oil Well



Gas Well



Other

2. Name of Operator

BP AMERICA PRODUCTION COMPANY

3a. Address

PO BOX 3092 HOUSTON, TX 77253

3b. Phone No. (include area code)

281-366-3866

8. Well Name and No.

LUDWICK LS 20N

9. API Well No.

NEW WELL

30-045-34005

10. Field and Pool, or Exploratory Area

BASIN DAKOTA & BLANCO MESAVERDE

4. Location of Well (Footage, Sec., T., R., M., or Survey Description)

2500' FSL & 815' FWL; SEC 29 T30N R10W

11. County or Parish, State

SAN JUAN, NM

12. CHECK APPROPRIATE BOX(ES) TO INDICATE NATURE OR NOTICE, REPORT, OR OTHER DATA

TYPE OF SUBMISSION

TYPE OF ACTION



Notice of Intent



Subsequent Report



Final Abandonment Notice



Acidize



Alter Casing



Casing Repair



Change Plans



Convert to Injection



Deepen



Fracture Treat



New Construction



Plug and Abandon



Plug Back



Production (Start/Resume)



Reclamation



Recomplete



Water Disposal



Water shut-Off



Well Integrity



Other CHANGE BOP

13. Describe Proposed or Completed Operation (clearly state all pertinent details, including estimated starting date of any proposed work and approximate duration thereof. If the proposal is to deepen directionally or recomplete horizontally, give subsurface locations and measured and true vertical depths of all pertinent markers and zones. Attach the Bond under which the work will be performed or provide the Bond No. on file with BLM/BIA. Required subsequent reports shall be filed within 30 days following completion of the involved operations. If the operation results in a multiple completion or recompletion in a new interval, a Form 3160-4 shall be filed once testing has been completed. Final Abandonment Notices shall be filed only after all requirements, including reclamation, have been completed, and the operator has determined that the site is ready for final inspection.

BP AMERICA SUBMITTED APD ON 10/09/2006 AND IS WAITING ON APD APPROVAL.

DUE TO OUR NEW DRILLING RIG (H&P 292) THE BOP DRAWING AND CHOKE MANIFOLD HAS CHANGED. ATTACHED ARE THE UPDATED ARRANGEMENTS TO OUR ORIGINAL BOP DRAWING.

IF YOU NEED ANY ADDITIONAL INFORMATION PLEASE FEEL FREE TO CONTACT HARALD JORDAN @ 505-326-9202.

14. I hereby certify that the foregoing is true and correct

Name (Printed/typed)

KRISTINA HURTS

Title Regulatory Analyst

Signature

Date 01/11/2007

THIS SPACE FOR FEDERAL OR STATE OFFICE USE

Approved by

Title

Date

Conditions of approval, if any, are attached. Approval of this notice does not warrant or Certify that the applicant holds legal or equitable title to those rights in the subject lease which would entitle the applicant to conduct operations thereon.

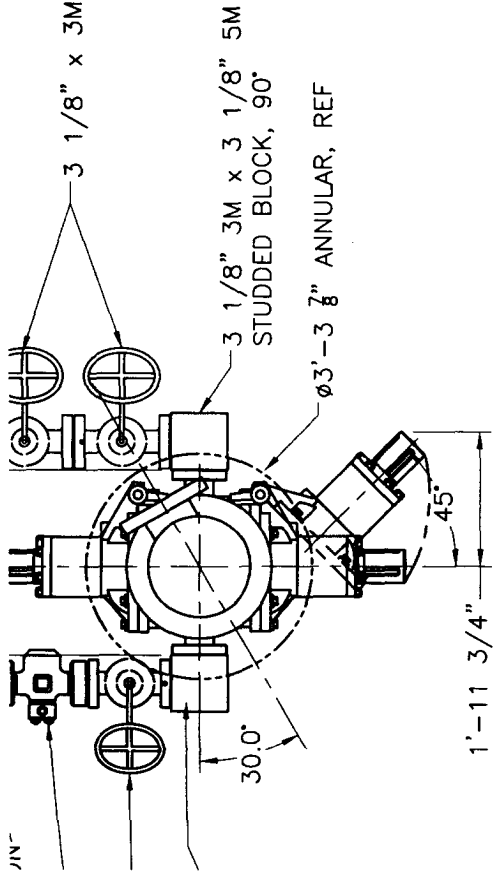
Office

Title 18 U.S.C. Section 1001 and Title 43 U.S.C. Section 1212, make it a crime for any person knowingly and willfully to make to any department or agency of the United States any false, fictitious or fraudulent statements or representations as to any matter within its jurisdiction.

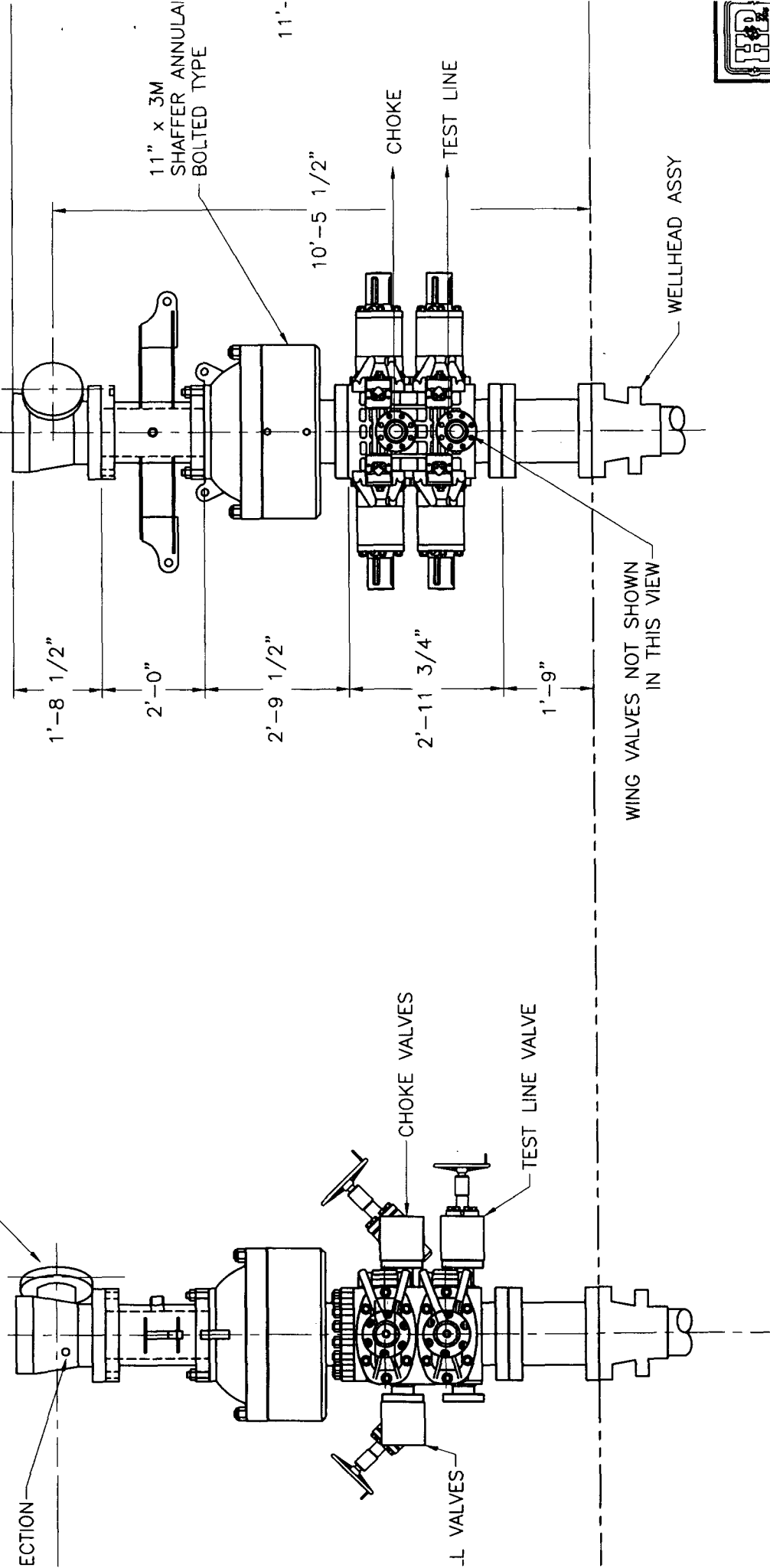
NMOC

(4)	R ₂
(3)	3 1
(2)	2 1,
(3)	
	RINGS
	SPA
	TOT

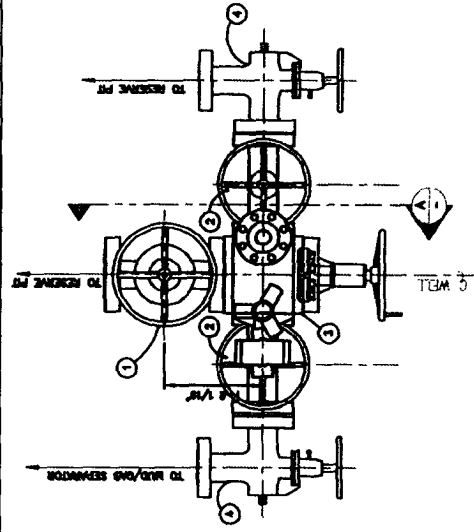
3 1/8" x 3M MANUAL GATE VALVES



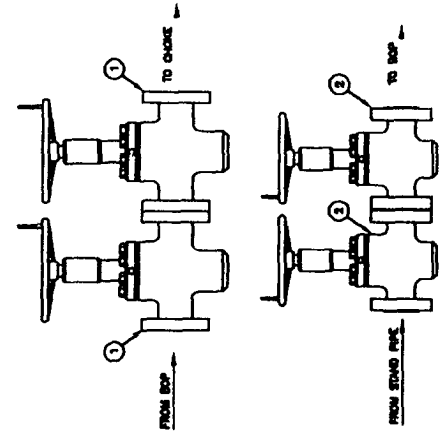
STAR ROTATING HEAD



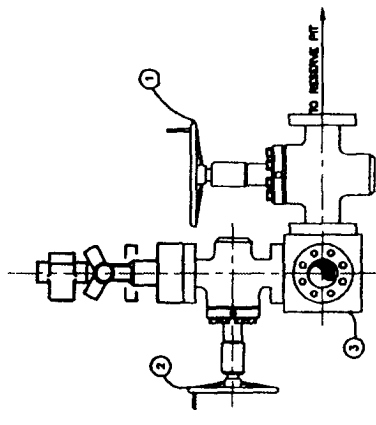
- LEGEND**
- ① 3 1/8"-5M FLANGED END GATE VALVE
 - ② 2 1/16"-5M FLANGED END GATE VALVE
 - ③ BLOCK WITH TRANSMITTER FLANGE AND PRESSURE GAUGE
 - ④ 2 1/16"-5M ADJUSTABLE CHOKE
 - ⑤ TRANSMITTER FLANGE
 - ⑥ PRESSURE GAUGE



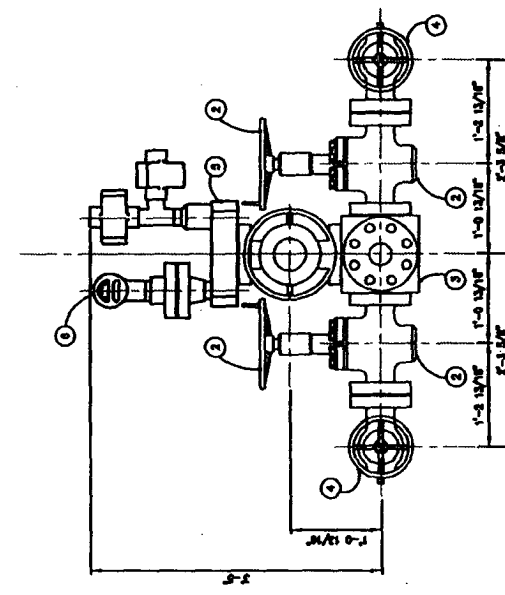
PLAN VIEW
CHOKES MANIFOLD



BOP SIDE OUTLET VALVES



VIEW A-A



ELEVATION VIEW

ISSUED FOR
FABRICATION
DRAFTSMAN
ENGINEER

HELMERICH & PAYNE
INTERNATIONAL DRILLING CO.

PROJECT: FAMA-H-502		TITLE: CHOKES MANIFOLD	
REV	DATE	DESCRIPTION	BY
1	11.17.78	ISSUED FOR FABRICATION	W
2	11.17.78	REVISION	W
3	11.17.78	REVISION	W
4	11.17.78	REVISION	W
5	11.17.78	REVISION	W
6	11.17.78	REVISION	W
7	11.17.78	REVISION	W
8	11.17.78	REVISION	W
9	11.17.78	REVISION	W
10	11.17.78	REVISION	W
11	11.17.78	REVISION	W
12	11.17.78	REVISION	W
13	11.17.78	REVISION	W
14	11.17.78	REVISION	W
15	11.17.78	REVISION	W
16	11.17.78	REVISION	W
17	11.17.78	REVISION	W
18	11.17.78	REVISION	W
19	11.17.78	REVISION	W
20	11.17.78	REVISION	W
21	11.17.78	REVISION	W
22	11.17.78	REVISION	W
23	11.17.78	REVISION	W
24	11.17.78	REVISION	W
25	11.17.78	REVISION	W
26	11.17.78	REVISION	W
27	11.17.78	REVISION	W
28	11.17.78	REVISION	W
29	11.17.78	REVISION	W
30	11.17.78	REVISION	W
31	11.17.78	REVISION	W
32	11.17.78	REVISION	W
33	11.17.78	REVISION	W
34	11.17.78	REVISION	W
35	11.17.78	REVISION	W
36	11.17.78	REVISION	W
37	11.17.78	REVISION	W
38	11.17.78	REVISION	W
39	11.17.78	REVISION	W
40	11.17.78	REVISION	W
41	11.17.78	REVISION	W
42	11.17.78	REVISION	W
43	11.17.78	REVISION	W
44	11.17.78	REVISION	W
45	11.17.78	REVISION	W
46	11.17.78	REVISION	W
47	11.17.78	REVISION	W
48	11.17.78	REVISION	W
49	11.17.78	REVISION	W
50	11.17.78	REVISION	W
51	11.17.78	REVISION	W
52	11.17.78	REVISION	W
53	11.17.78	REVISION	W
54	11.17.78	REVISION	W
55	11.17.78	REVISION	W
56	11.17.78	REVISION	W
57	11.17.78	REVISION	W
58	11.17.78	REVISION	W
59	11.17.78	REVISION	W
60	11.17.78	REVISION	W
61	11.17.78	REVISION	W
62	11.17.78	REVISION	W
63	11.17.78	REVISION	W
64	11.17.78	REVISION	W
65	11.17.78	REVISION	W
66	11.17.78	REVISION	W
67	11.17.78	REVISION	W
68	11.17.78	REVISION	W
69	11.17.78	REVISION	W
70	11.17.78	REVISION	W
71	11.17.78	REVISION	W
72	11.17.78	REVISION	W
73	11.17.78	REVISION	W
74	11.17.78	REVISION	W
75	11.17.78	REVISION	W
76	11.17.78	REVISION	W
77	11.17.78	REVISION	W
78	11.17.78	REVISION	W
79	11.17.78	REVISION	W
80	11.17.78	REVISION	W
81	11.17.78	REVISION	W
82	11.17.78	REVISION	W
83	11.17.78	REVISION	W
84	11.17.78	REVISION	W
85	11.17.78	REVISION	W
86	11.17.78	REVISION	W
87	11.17.78	REVISION	W
88	11.17.78	REVISION	W
89	11.17.78	REVISION	W
90	11.17.78	REVISION	W
91	11.17.78	REVISION	W
92	11.17.78	REVISION	W
93	11.17.78	REVISION	W
94	11.17.78	REVISION	W
95	11.17.78	REVISION	W
96	11.17.78	REVISION	W
97	11.17.78	REVISION	W
98	11.17.78	REVISION	W
99	11.17.78	REVISION	W
100	11.17.78	REVISION	W

PROPRIETARY
THIS DRAWING AND THE DESIGN AND INVENTION THEREOF ARE THE PROPERTY OF HELMERICH & PAYNE INTERNATIONAL DRILLING CO. AND ARE NOT TO BE REPRODUCED OR USED IN ANY MANNER WITHOUT THE WRITTEN PERMISSION OF HELMERICH & PAYNE INTERNATIONAL DRILLING CO.