

UNITED STATES
DEPARTMENT OF THE INTERIOR
BUREAU OF LAND MANAGEMENT

SUNDRY NOTICES AND REPORTS ON WELLS

Do not use this form for proposals to drill or to re-enter an
Abandoned well. Use Form 3160-3 (APD) for such proposals.

FORM APPROVED
OMB No. 1004-0135
Expires November 30, 2000

5. Lease Serial No.

NMSE078194

RCVD FEB 9 07
OIL CONS. DIV.

6. If Indian, Allottee or tribe Name

DIST. 3

7. If Unit or CA Agreement, Name and or No.

SUBMIT IN TRIPLICATE - Other instructions on reverse side

1. Type of Well



Oil Well



Gas Well



Other

2. Name of Operator

BP America Production Co

8. Well Name and No.

LUDWICK A 1

9. API Well No.

30-045-12157-00-S1

3a. Address

P.O. Box 3092

Houston, Texas 77253

3b. Phone No. (include area code)

Ph. 281.366.4491

Fx. 281.366.0700

10. Field and Pool, or Exploratory Area

Basin

4. Location of Well (Footage, Sec., T., R., M., or Survey Description)

Sec 19 T30N R10W SWSW 1190FSL 1190FWL

36.79320 N lat. 107.92928 W Lon

11. County or Parish, State

San Juan County, NM

12. CHECK APPROPRIATE BOX(ES) TO INDICATE NATURE OR NOTICE, REPORT, OR OTHER DATA

TYPE OF SUBMISSION



Notice of Intent



Subsequent Report



Final Abandonment Notice

TYPE OF ACTION



Acidize



Deepen



Production (Start/Resume)



Water shut-Off



Alter Casing



Fracture Treat



Reclamation



Well Integrity



Casing Repair



New Construction



Recomplete



Other



Change Plans



Plug and Abandon



Water Disposal



Convert to Injection



Plug Back

13. Describe Proposed or Completed Operation (clearly state all pertinent details, including estimated starting date of any proposed work and approximate duration thereof. If the proposal is to deepen directionally or recomple horizontally, give subsurface locations and measured and true vertical depths of all pertinent markers and zones. Attach the Bond under which the work will be performed or provide the Bond No. on file with BLM/BIA. Required subsequent reports shall be filed within 30 days following completion of the involved operations. If the operation results in a multiple completion or recomple in a new interval, a Form 3160-4 shall be filed once testing has been completed. Final Abandonment Notices shall be filed only after all requirements, including reclamation, have been completed, and the operator has determined that the site is ready for final inspection.

BP America respectfully requests permission to plug and abandon the above mentioned well.

Please see attached P&A Procedure.

14. I hereby certify that the foregoing is true and correct
Name (Printed/typed)

Toya Colvin

Title Regulatory Analyst

Signature

Toya Colvin

Date 1/29/2007

THIS SPACE FOR FEDERAL OR STATE OFFICE USE

Approved by

Original Signed: Stephen Mason

Title

Date

FEB 07 2007

Conditions of approval, if any, are attached. Approval of this notice does not warrant or
Certify that the applicant holds legal or equitable title to those rights in the
subject lease which would entitle the applicant to conduct operations thereon.

Office

Title 18 U.S.C. Section 1001 and Title 43 U.S.C. Section 1212, make it a crime for any person knowingly and willfully to make to any department or agency of the United States
any false, fictitious or fraudulent statements or representations as to any matter within its jurisdiction.

NMOC

SJ Basin Plugging Procedure

Well Name: Ludwick A1 - DK
Version: 1.0
Date: January 15, 2007
Repair Type: P&A

Objective: P&A of wellbore.

1. TOH with completion.
 2. Ensure wellbore is clean of obstructions (cleanout).
 3. Squeeze potential hole
 4. Pump cement plugs and remove wellhead.
-

Pertinent Information: Gas BTU content for this well is 1104; Sp gr. is 0.6458. Data recorded on 5/6/2005 in FDA. Venting and Flaring document needs to be followed if BTU content is above 950.

Location:	T30N-R10W-Sec19	API #:	30-045-12157
County:	San Juan		
State:	New Mexico		
Horizon:	DK	Engr:	Anne Fickinger
CO2:	1.968%	ph	(505) 326-9483
H2S:	39 ppm (7/10/06)	mobile:	505-486-9249

Procedure:

1. **Notify BLM and NMOCD 24 hours prior to beginning P&A operations.**
Henry Villanueva (505) 334-6178 (ext 17).
BLM Contact (505) 599-8907
2. MIRU workover rig. LOTO all necessary equipment including but not limited to: meter run, automation, separator, and water line.
3. Blow down well.
4. Check all casing strings to ensure no pressure exist on any annulus. **The operations of removal of wellhead and installation of BOP's will be performed under a dispensation for one (1) barrier on the backside.**
5. Nipple down Wellhead. NU BOPs and diversion spool with 3" outlets and 3" pipe to the blow tank. Pressure test BOPs to 200 psi above BHP.
6. Install stripping rubber, pull tubing hanger and shut pipe rams. Strip tubing hanger out of hole.
7. TOOH and LD 2-3/8" production tubing currently set at 7036'.

8. TIH with bit and scraper for 4-1/2" casing to top of DK perms at 7090' with approved barrier. Check the distance between the top of the blind rams and the length of the bottomhole assembly that is being run. If the BHA is too long then the well has to be top killed and monitored prior to opening blind rams. Work casing scraper down to just above old Dakota perforations. POOH.
9. TIH with 2-3/8" work string and set CIBP at 7040' (tubing set). Load well with fluid. Pressure test casing. If casing doesn't test RIH with Retrievable plug and find hole in casing. Contact production engineer if squeezes are required.
10. RIH to 7040'. Pump and displace a 400' plug from 7040 to 6640'. This will be the Dakota formation plug.
11. Run CBL to determine if cement behind 4-1/2" casing from 5522' to 3065'. If no cement, contact engineer for procedure.
12. POOH to 2800' and set CIBP at 2800'. Pump and displace a 800' plug from 2800' to 2000'. This will be the PC/Fruitland formation plug.
13. POOH to 1600' and set CIBP at 1600'. Pump and displace a 450' plug from 1600' to 1200' + 50' excess. This should put cement across the Ojo Alamo.
14. POOH to 314' and set CIBP at 314'. Pump and displace a 314' plug from 314' to surface. This should put cement across surface casing shoe all the way to surface.
15. Ensure 8-5/8" x 4-1/2" annulus is filled to surface.
16. Perform underground disturbance and hot work permits. Cut off tree.
17. Install 4' well marker and identification plate per NMOCD requirements.

Plug Gallup 6288' - 6188' inside
 " Mesaverde 4301' - 4201' inside + outside
 " Chacra 3545' - 3445' inside + outside

Ludwick A 1

API# 30-045-12157

Sec 19, T30N, R10W

GL: 6210'

History:

Completed 12/65

WO 4:02 left fish

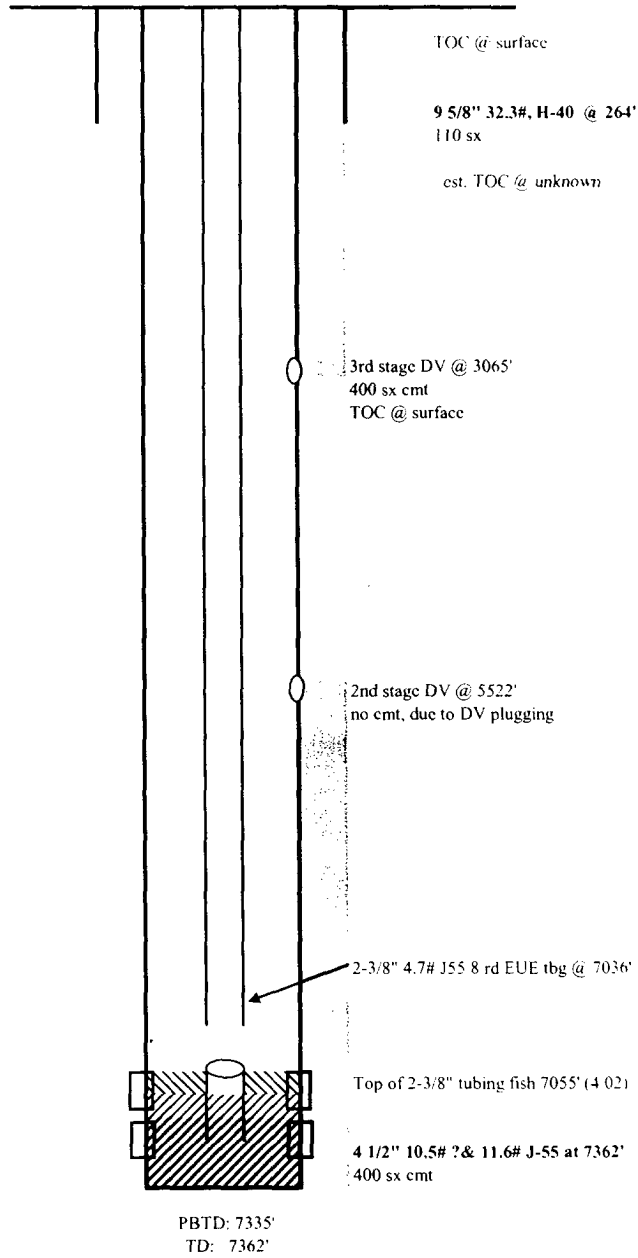
WO 6:04 to remove stuck plunger.

Possible CIBP @ 7220'

Dakota perforations:

7090' - 7197', frac'd with 75k lbs sand

7234' - 7265', frac'd with 51k lbs sand



updated: 1/15/07 AF

FORMATION TOPS:

Ojo Alamo:	1319'
Kirkland	1454'
FT	2140'
Lewis	2670'
Chacra	3687'
GRRs	7032'
TWLS	7085'
PGTE	7158'
CBRO	7218'
L CBRO	7253'
ENCO	7290'
BRCN	7342'

Ludwick A 1

API# 30-045-12157

Sec 19, T30N, R10W

GL: 6210'

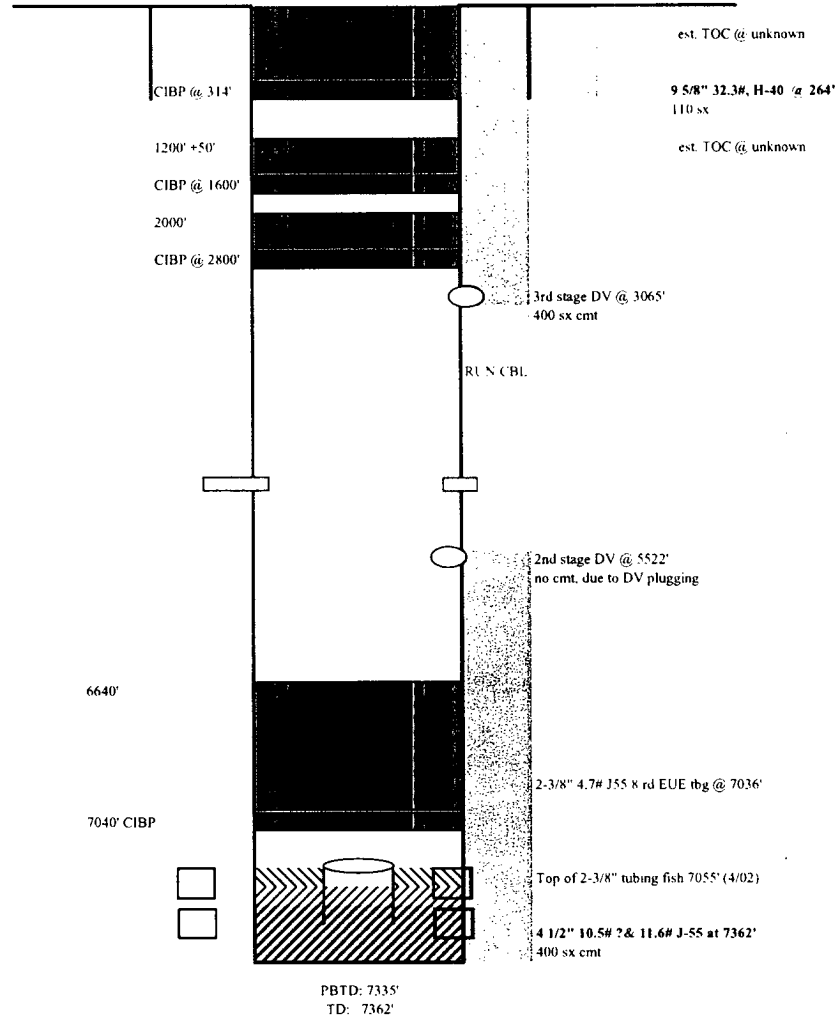
History:

Completed 12/65
 WO 4/02 left fish
 WO 6/04 to remove stuck plunger.

Dakota perforations:

7090' - 7197', frac'd with 75k lbs sand

7234' - 7265', frac'd with 51k lbs sand



updated: 1/15/07 AF

FORMATION TOPS:

Ojo Alamo 1319'
 Kirkland 1454'
 FT 2140'
 Lewis 2670'
 Chacra 3687'
 GRRs 7032'
 TWLS 7085'
 PGTE 7158'
 CBRO 7218'
 L CBRO 7253'
 ENCO 7290'
 BRCN 7342'