

**UNITED STATES
DEPARTMENT OF THE INTERIOR
BUREAU OF LAND MANAGEMENT**

Sundry Notices and Reports on Wells

2007 APR 26 PM 1:44

1. Type of Well
GAS

2. Name of Operator
BURLINGTON
RESOURCES OIL & GAS COMPANY LP

3. Address & Phone No. of Operator

PO Box 4289, Farmington, NM 87499 (505) 326-9700

4. Location of Well, Footage, Sec., T, R, M
Sec., T--N, R--W, NMPM

Unit G (SWNE) 1635' FNL & 1550' FEL, Sec. 31, T29N, R10W NMPM

RECEIVED
BLM
210 FARMINGTON NM.

5. Lease Number
NMNM-0702
If Indian, All. or
Tribe Name

7. Unit Agreement Name

8. Well Name & Number

Wilson #2
9. API Well No.

30-045-23730

10. Field and Pool

Aztec Fruitland Sands/ Otero Charca

11. County and State
San Juan Co., NM

12. CHECK APPROPRIATE BOX TO INDICATE NATURE OF NOTICE, REPORT, OTHER DATA

Type of Submission

Type of Action

☐ Notice of Intent

☐ Abandonment

☐ Change of Plans

☒ Other - Commingle

☒ Subsequent Report

☐ Recompletion

☐ New Construction

☐ Plugging

☐ Non-Routine Fracturing

☐ Casing Repair

☐ Water Shut off

☐ Final Abandonment

☐ Altering Casing

☐ Conversion to Injection

13. Describe Proposed or Completed Operations

3/5/07 MIRU Drake #24. 3/6/07 ND WH. NU BOP. Kill well. Latch onto tbg. Tbg parted. No tension from lock set pkr. LD 49jts 2 1/16" IJ tbg. PU overshot. Latch onto TOF @ 1725'. Rest of tbg intact w/pkr. RU W/L. Run free point tool. Tbg clear to pkr. RD W/L. Release overshot from fish. Pull above perfs. 3/7/07 TOH w/overshot. TIH w/pipe cutter. Slide over tbg. Make outside cut on tbg @ 1763'. TOO H w/cutter. TIH w/overshot. Latch onto fish @ 1763'. RU W/L. Chemical cut tbg @ 2711'. RD W/L. TOH to fish. TIH w/overshot. Latch onto fish @ 2711'. Attempt to release lock set pkr @ 2723', cannot. TOO H w/overshot. 3/8/07 TIH w/RBP set above top set of perfs @ 1500'. PT csg to 600psi for 15mins, ok. TOO H w/retrieving head. ND BOP. Remove seals. Spear csg and PU reset slips. Pack new seal on top of slips and tighten. Stopped BH leak around 4 1/2" csg. NU WH. NU BOP. TIH w/retrieving head and release RBP @ 1500'. TOO H w/RBP. TIH w/shoe. Break circulation w/airmist. Wash over tbg. C/O 6' fill on top of pkr. TOH w/shoe. 3/9/07 TIH w/overshot. Latch onto fish. Attempt to release lock set pkr. RU W/L. Shoot pkr w/80GR, no release. Attempt to cut tbg below sliding sleeve tbg did not cut. Tbg parted. RD W/L. TOO H w/overshot. Recover 6' tbg. TIH w/washover pipe and shoe. Break circulation w/air mist. Start cutting over pkr. Made 6" blow

See attached.

0 Hc 3837

14. I hereby certify that the foregoing is true and correct.

Signed

Amanda Sanchez

Amanda Sanchez Title Regulatory Tech Date 4/26/07

(This space for Federal or State Office use)

APPROVED BY

Title

Date

APR 27 2007

CONDITION OF APPROVAL, if any:

Title 18 U.S.C. Section 1001, makes it a crime for any person knowingly and willfully to make any department or agency of the United States any false, fictitious or fraudulent statements or representations as to any matter within its jurisdiction.

ACCEPTED FOR RECORD

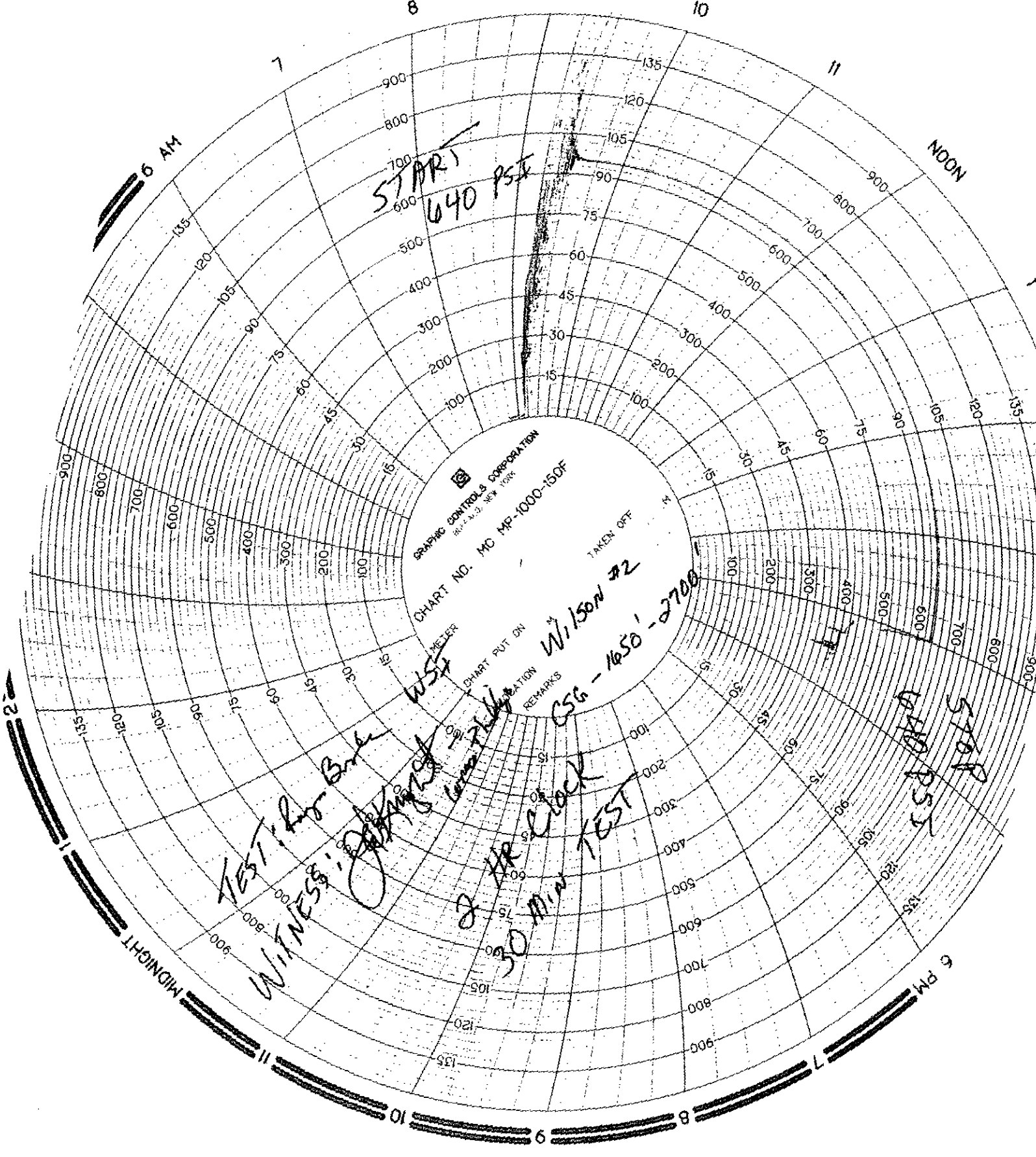
FARMINGTON FIELD OFFICE

NMOCD

clean. SDF weekend. 3/12/07 Mill over lock set pkr w/shoe. Pkr loose. Work pkr down hole. Tag fill @ 2900'. Blow clean. TOO H LD wash over pipe and shoe. TIH w/overshot. Run control w/cutright. Attempt dress TOF w/control and latch fish. TOO H w/overshot. TIH w/mill. Dress TOF 1' w/mill. Blow clean. Pull above perfs. 3/13/07 TOH w/mill. TIH w/overshot. Latch onto fish. Work fish up to bottom perf @ 2892'. Pkr hung up. Set jars off. Tbg free. TOO H w/overshot. Recover rest of pup jt and half of lock set pkr. TIH w/mill. Mill on junk from rest of pkr. Work down hole to 2915'. Blow clean. TOO H w/mill. LD fishing tools. 3/14/07 TIH w/RBP. Set RBP @ 2700'. Load csg w/2% KCL H2O. TOO H w/setting tool. TIH w/full bore pkr. Set below top perfs @ 1650'. PT csg between perfs. Chart test. PT tbg to 600psi for 30mins, ok. Move pkr from 1650' to top of upper perfs. Set @ 1500'. PT annulus from 1500' to surface. Chart test. PT to 500psi for 30mins, ok. TOH w/pkr. TIH w/setting tool. Latch and release RBP @ 2700'. TOO H w/RBP. TIH open ended w/tbg. Blow well clean. Pull above perfs. 3/15/07 Called Wayne w/BLM and Charlie w/OCD received verbal to squeeze. OJO @ 745'. TOC @ 860'. BH flowing black/grey H2O. Squeeze is due 3/16/07. Flow test FC and Charca together @ 36mcf. TOO H w/tbg. TIH w/RBP set @ 1650'. 2hr f/FC to build pressure to 80psi. Flow test through separator w/40psi back pressure. Stable @ 12mcf. 3/16/07 TIH w/retrieving head. Release RBP @ 1650'. TOO H w/RBP. Flow test FC and Chraca together @ 66mcf. TIH w/RBP set @ 1500'. Load hole w/2% KCL H2O. TOO H w/setting tool. RU W/L. Run CBL/CCL/GR from 1500' to surface. TOC @ 860' RD W/L. Dump sand on RBP @ 1500'. SDF Weekend. 3/19/07 RU W/L. Shoot squeeze hole @ 800'. RD W/L. lose rams. Establish circulation through BH. RU Schlumberger. Mix and pump 200sxs Class G neat cmt. Displace w/6bbls H2O. Circulate 6bbls of cmt to surface. RD Schlumberger. WOC. Release and TOO H w/pkr. 3/20/07 TIH w/3 7/8" bit tag cmt @ 660'. RU swivel. Break circulation w/H2O. Drill cmt from 660' to 810'. Circulate clean. PT squeeze to 500psi for 15mins, ok. TOO H w/bit. TIH w/retrieving head. Blow well dry w/air on top of RBP @ 1500'. Latch, equalize, and release RBP @ 1500'. TOO H w/RBP. TIH w/expendable check. TIH w/92jts J55 4.7# 2 3/8" tbg and landed @ 2890'. ND BOP. NU WH. RD MO 3/20/07.

Well commingled DHC order # 3837. (FS/CH)

The charts are attached for review.



START
640 PSI

GRAPHIC CONTROLS CORPORATION
100-11-1-1 NEW YORK
CHART NO. MC MP-1000-150F

METER
CHART PUT ON
TAKEN OFF
REMARKS

TEST FOR BURN
WITNESS: [signature]

2 HR Clock
30 MIN TEST

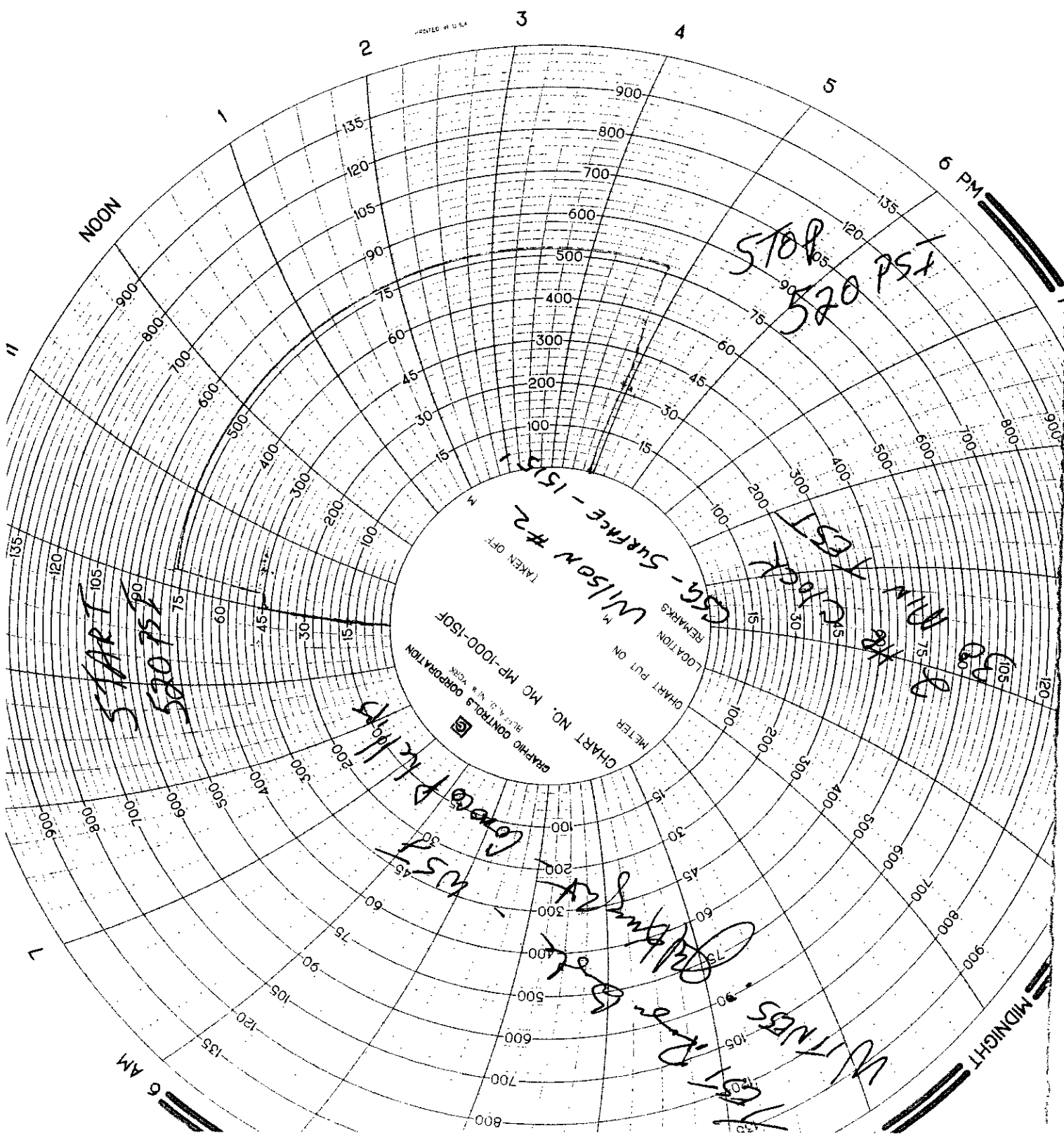
Wilson #2
CSG-1650-2700

570P
640 PSI

MIDNIGHT

NOON

6 PM



PRINTED IN U.S.A.

2

3

4

5

6 PM

NOON

11

135

120

105

90

75

60

45

30

15

0

15

30

45

60

75

90

105

120

135

150

165

180

195

210

225

240

255

270

285

300

315

330

345

360

375

390

405

420

435

450

465

480

495

510

525

540

555

570

585

600

615

630

645

660

675

690

705

720

735

750

765

780

795

810

825

840

855

870

885

900

915

930

945

960

975

990

1005

1020

1035

1050

1065

1080

1095

1110

1125

1140

1155

1170

1185

1200

1215

1230

1245

1260

1275

1290

1305

1320

1335

1350

1365

1380

1395

1410

1425

1440

1455

1470

1485

1500

1515

1530

1545

1560

1575

1590

1605

1620

1635

1650

1665

1680

1695

1710

1725

1740

1755

1770

1785

1800

1815

1830

1845

1860

1875

1890

1905

1920

1935

1950

1965

1980

1995

2010

2025

2040

2055

2070

2085

2100

2115

2130

2145

2160

2175

2190

2205

2220

2235

2250

2265

2280

2295

2310

2325

2340

2355

2400

2415

2430

2445

2460

2475

2490

2505

2520

2535

2550

2565

2580

2595

2610

2625

2640

2655

2670

2685

2700

2715

2730

2745

2760

2775

2790

2805

2820

2835

2850

2865

2880

2895

2910

2925

2940

2955

2970

2985

3000

3015

3030

3045

3060

3075

3090

3105

3120

3135

3150

3165

3180

3195

3210

3225

3240

3255

3270

3285

3300

3315

3330

3345

3360

3375

3390

3405

3420

3435

3450

3465

3480

3495

3510

3525

3540

3555

3570

3585

3600

3615

3630

3645

3660

3675

3690

3705

3720

3735

3750

3765

3780

3795

3810

3825

3840

3855

3870

3885

3900

3915

3930

3945

3960

3975

3990

4005

4020

4035

4050

4065

4080

4095

4110

4125

4140

4155

4170

4185

4200

4215

4230

4245

4260

4275

4290

4305

4320

4335

4350

4365

4380

4395

4410

4425

4440

4455

4470

4485

4500

4515

4530

4545

4560

4575

4590

4605

4620

4635

4650

4665

4680

4695

4710

4725

4740