

UNITED STATES
DEPARTMENT OF THE INTERIOR
BUREAU OF LAND MANAGEMENT

RCVD MAY4'07
OIL CONS. DIV.
DIST. 3

APPLICATION FOR PERMIT TO DRILL, DEEPEN, OR PLUG BACK

1a. Type of Work DRILL	2005 FEB 17 PM 3 05 RECEIVED 070 FARMINGTON NM	5. Lease Number NMSF-077482 Unit Reporting Number NMNM-102950
1b. Type of Well GAS		6. If Indian, All. or Tribe
2. Operator BURLINGTON RESOURCES Oil & Gas Company		7. Unit Agreement Name
3. Address & Phone No. of Operator PO Box 4289, Farmington, NM 87499 (505) 326-9700		8. Farm or Lease Name Jaquez Jose 9. Well Number #1S
4. Location of Well 390' FSL, 1680' FEL Latitude 36° 47.5013'N, Longitude 108° 02.7572'W		10. Field, Pool, Wildcat Basin Privatland Coal 11. Sec., Twn, Rge, Mer. (NMPM) Sec. 24, T30N, R12W API # 30-045-33602
14. Distance in Miles from Nearest Town 3.5 miles intersection Hwy 516 & CR 3500	12. County San Juan	13. State NM
15. Distance from Proposed Location to Nearest Property or Lease Line 390'		
16. Acres in Lease	17. Acres Assigned to Well 8/2 320 acres	
18. Distance from Proposed Location to Nearest Well, Drig. Compl, or Applied for on this Lease		
19. Proposed Depth 2220'	20. Rotary or Cable Tools Rotary	
21. Elevations (DF, FT, GR, Etc.) 5753' GR	22. Approx. Date Work will Start	
23. Proposed Casing and Cementing Program See Operations Plan attached	NOTIFY AZTEC OCD 24 HRS. PRIOR TO CASING & CEMENT 2/17/06 Date.	
24. Authorized by: <u>Joni Clark</u> Regulatory Specialist		

PERMIT NO. _____ APPROVAL DATE _____
APPROVED BY [Signature] TITLE AFM DATE 3/7/06

Archaeological Report attached

Threatened and Endangered Species Report attached

NOTE: This format is issued in lieu of U.S. BLM Form 3160-3

Title 18 U.S.C. Section 1001, makes it a crime for any person knowingly and willfully to make to any department or agency of the United States any false, fictitious or fraudulent statements or presentations as to any matter within its jurisdiction.

DRILLING OPERATIONS AUTHORIZED ARE
SUBJECT TO COMPLIANCE WITH ATTACHED
"GENERAL REQUIREMENTS".
5/9/07

✓ HOLD C104 FOR NSL
This action is subject to technical and
procedural review pursuant to 43 CFR 3165.3
and applied pursuant to 43 CFR 3165.4

OPERATOR

DISTRICT II
811 South First, Artesia, N.M. 88210

DISTRICT III
1000 Rio Brazos Rd., Aztec, N.M. 87410

DISTRICT IV
2040 South Pacheco, Santa Fe, NM 87505

OIL CONSERVATION DIVISION

2040 South Pacheco
Santa Fe, NM 87505

Submit to Appropriate District Office
State Lease - 4 Copies
Fee Lease - 3 Copies

☐ AMENDED REPORT

WELL LOCATION AND ACREAGE DEDICATION PLAT

'API Number 30-045- 33602	'Pool Code 71629	'Pool Name Basin Fruitland Coal
'Property Code 7156 35520	'Property Name JAEZ JOSE	'Well Number 1S
'OGRID No. 14538	'Operator Name BURLINGTON RESOURCES OIL AND GAS COMPANY LP	'Elevation 5753'

¹⁰ Surface Location

UL or lot no.	Section	Township	Range	Lot Idn	Feet from the	North/South line	Feet from the	East/West line	County
0	24	30-N	12-W		390'	SOUTH	1680'	EAST	SAN JUAN

¹¹ Bottom Hole Location If Different From Surface

UL or lot no. 0	Section	Township	Range	Lot Idn	Feet from the	North/South line	Feet from the	East/West line	County
Dedicated Acres 320 acres - S/2			Joint or Infill		Consolidation Code		Order No.		

RCVD MAY 4 '07
 OIL CONS. DIV.
 DIST. 3

**NO ALLOWABLE WILL BE ASSIGNED TO THIS COMPLETION UNTIL ALL INTERESTS HAVE BEEN CONSOLIDATED
OR A NON-STANDARD UNIT HAS BEEN APPROVED BY THE DIVISION**

16

24

FEE

NM SF-077482

FEE

LAT: 36°47.5013' N.
LONG: 106°08.7672' W.
NAD 1987

1680'

390'

N 89°51'59" W
2657.24'

N 017°58' E
2680.98'

17 OPERATOR CERTIFICATION

I hereby certify that the information contained herein is true and complete to the best of my knowledge and belief.

Patsy Chisolm
Signature

Patsy Clugston
Printed Name

Sr. Regulatory Specialist
Title

12-15-05

Date

18 SURVEYOR CERTIFICATION

I hereby certify that the well location shown on this plat was plotted from field notes of actual surveys made by me or under my supervision, and that the same is true and correct to the best of my belief.

Date of Survey _____

Signature *E. V. MEXIA*

Colin W Russell
Certificate Number 15703

District I

1625 N. French Dr., Hobbs, NM 88240

District II

1301 W. Grand Ave., Artesia, NM 88210

District III

1000 Rio Brazos Rd., Aztec, NM 87410

District IV

1220 S. St. Francis Dr., Santa Fe, NM 87505

Energy, Minerals and Natural Resources

OIL CONSERVATION DIVISION

1220 South St. Francis Dr.

Santa Fe, NM 87505

May 27, 2004

WELL API NO.	30-045- 33602
5. Indicate Type of Lease	STATE <input type="checkbox"/> FEE <input checked="" type="checkbox"/>
6. State Oil & Gas Lease No.	NMSF-077482
7. Lease Name or Unit Agreement Name	Jacquez Jose
8. Well Number	1S
9. OGRID Number	14538
10. Pool name or Wildcat	Basin Fruitland Coal

SUNDRY NOTICES AND REPORTS ON WELLS
(DO NOT USE THIS FORM FOR PROPOSALS TO DRILL OR TO DEEPEN OR PLUG BACK TO A DIFFERENT RESERVOIR. USE "APPLICATION FOR PERMIT" (FORM C-101) FOR SUCH PROPOSALS.)

1. Type of Well:
Oil Well ☐ Gas Well ☒ Other

2. Name of Operator
BURLINGTON RESOURCES OIL & GAS COMPANY LP

3. Address of Operator
3401 E. 30TH STREET, FARMINGTON, NM 87402

4. Well Location
Unit Letter O : 390 feet from the South line and 1680 feet from the East line
Section 24 Township 30N Range 12W NMPM County San Juan, NM

11. Elevation (Show whether DR, RKB, RT, GR, etc.)

Pit or Below-grade Tank Application ☒ or Closure ☐

Pit type Workover Depth to Groundwater >100 Distance from nearest fresh water well >1000' Distance from nearest surface water >1000'
Pit Liner Thickness: 12 mil Below-Grade Tank: Volume bbls; Construction Material

12. Check Appropriate Box to Indicate Nature of Notice, Report or Other Data

NOTICE OF INTENTION TO:

PERFORM REMEDIAL WORK ☐ PLUG AND ABANDON ☐
TEMPORARILY ABANDON ☐ CHANGE PLANS ☐
PULL OR ALTER CASING ☐ MULTIPLE COMPL ☐

SUBSEQUENT REPORT OF:

REMEDIAL WORK ☐ ALTERING CASING ☐
COMMENCE DRILLING OPNS. ☐ P AND A ☐
CASING/CEMENT JOB ☐

OTHER: Workover ☒

OTHER: ☐

13. Describe proposed or completed operations. (Clearly state all pertinent details, and give pertinent dates, including estimated date of starting any proposed work). SEE RULE 1103. For Multiple Completions: Attach wellbore diagram of proposed completion or recompletion.

Workover, Lined:

Burlington Resources proposes to construct a workover pit. Based on Burlington's interpretation of the Ecosphere's risk ranking criteria, the workover pit will be a lined pit as detailed in Burlington's Revised Drilling / Workover Pit Construction / Operation Procedures dated November 11, 2004 on file at the NMOCD office. Burlington Resources anticipates closing the pit according to the Drilling / Workover Pit Closure Procedure dated August 2, 2004 on file at the NMOCD office.

On this workover, a vent/flare pit may be the only pit that will be required. Under this circumstance, a portion of this vent/flare pit will be designed to manage fluids, and that portion will be lined, as per the risk ranking criteria.

I hereby certify that the information above is true and complete to the best of my knowledge and belief. I further certify that any pit or below-grade tank has been/will be constructed or closed according to NMOCD guidelines ☐, a general permit ☒ or an (attached) alternative OCD-approved plan ☐.

SIGNATURE Joni Clark TITLE Sr. Regulatory Specialist DATE 2/16/2006

Type or print name Joni Clark E-mail address: jclark@br-inc.com Telephone No. 326-9700
For State Use Only

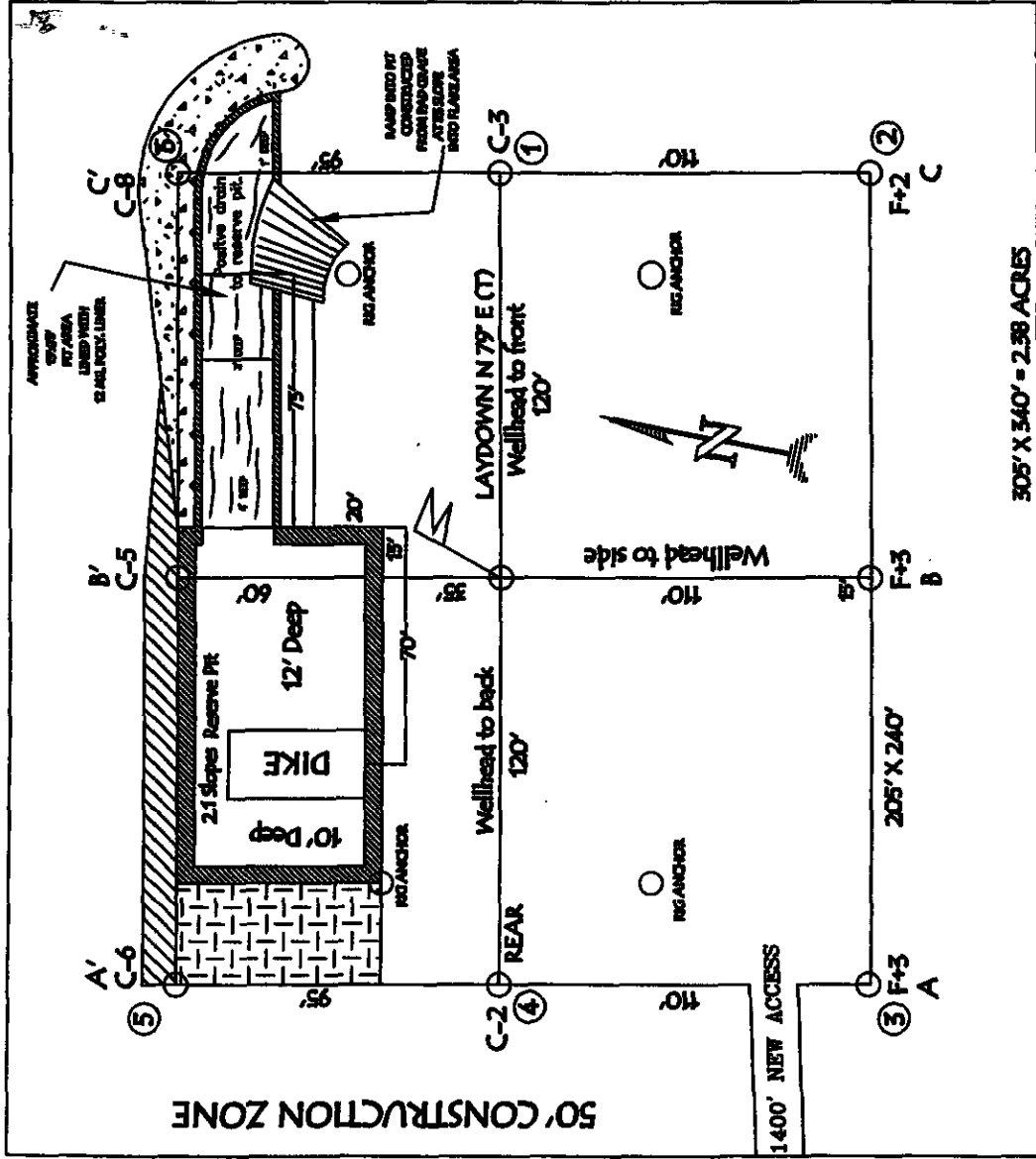
APPROVED BY [Signature] TITLE DEPUTY OIL & GAS INSPECTOR, DIST. #3 DATE MAY 09 2007
Conditions of Approval (if any):

BURLINGTON RESOURCES OIL & GAS COMPANY LP

JAEQUEZ JOSE 1S, 390' FSL & 1680' FEL

SECTION 24, T-30-N, R-12-W, NMPM, SAN JUAN COUNTY, NM

GROUND ELEVATION: 5753', DATE: NOVEMBER 15, 2005



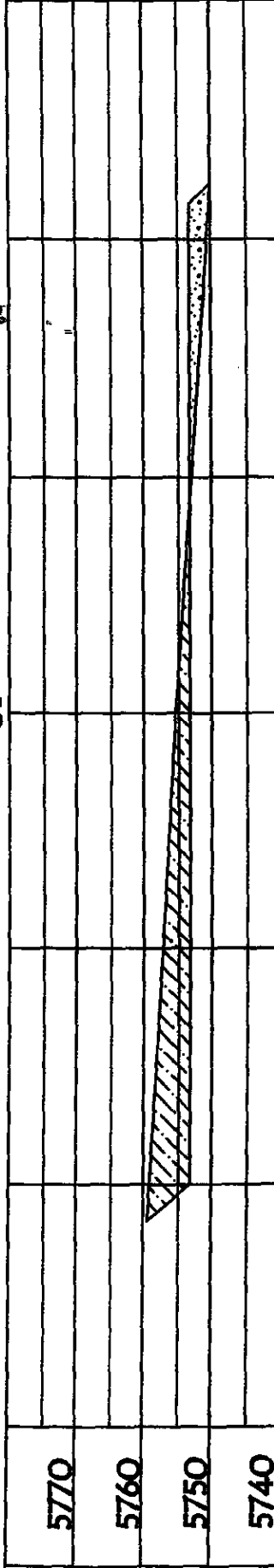
RESERVE PIT DIKE: TO BE 8' ABOVE DEEP SIDE (OVERFLOW - 3' WIDE AND 1' ABOVE SHALLOW SIDE).

NOTE: VECTOR SURVEYS IS NOT LIABLE FOR UNDERGROUND UTILITIES OR PIPELINES. CONTRACTOR SHOULD CALL ONE-CALL FOR LOCATION OF ANY MARKED OR UNMARKED BURIED PIPELINES OR CABLES ON WELL PAD AND OR ACCESS ROAD AT LEAST TWO (2) WORKING DAYS PRIOR TO CONSTRUCTION.

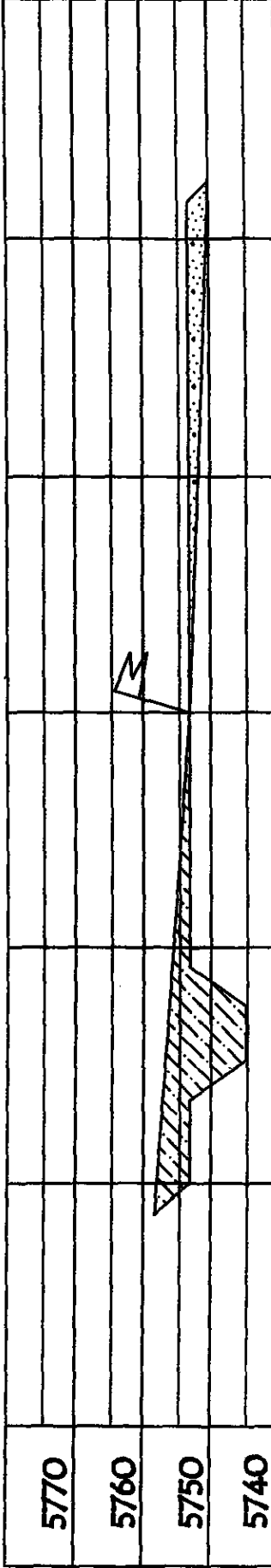
LATITUDE: 36° 47.5013' N LONGITUDE: 108° 02.7572' W NAD27

BURLINGTON RESOURCES OIL & GAS COMPANY LP
JAQUEZ JOSE 15, 390' FSL & 1680' FEL
SECTION 24, T-30-N, R-12-W, NMPM, SAN JUAN COUNTY, NM
GROUND ELEVATION: 5753', DATE: NOVEMBER 15, 2005

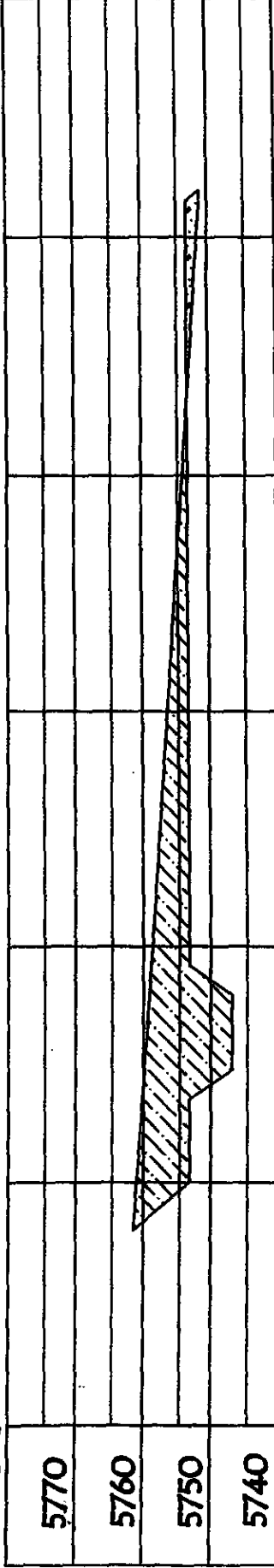
ELEV. A'-A



ELEV. B'-B



ELEV. C'-C



NOTE: VECTOR SURVEYS IS NOT LIABLE FOR UNDERGROUND UTILITIES OR PIPELINES.
 CONTRACTOR SHOULD CALL ONE-CALL FOR LOCATION OF ANY MARKED OR UNMARKED BURIED
 PIPELINES OR CABLES ON WELL PAD AND OR ACCESS ROAD AT LEAST TWO (2) WORKING DAYS PRIOR TO CONSTRUCTION.

OPERATIONS PLAN

Well Name: Jaquez Jose #1S
Location: 390' FSL, 1680' FEL Section 24, T-30-N, R-12-W
Latitude 36° 47.5013'N, Longitude 108° 02.7572'W
San Juan, NM
Formation: Basin Fruitland Coal
Elevation: 5753' GR

Formation:	Top	Bottom	Contents
Surface	San Jose	567'	
Ojo Alamo	567'	685'	aquifer
Kirtland	685'	1770'	
Fruitland Coal	1770'	2012'	gas
B/Basal Coal	2012'	2020'	gas
Pictured Cliffs	2020'		
Total Depth	2220'		

Logging Program: None
Mudlog: None
Coring Program: None
Cased Hole: GR/CBL

Mud Program:

Interval	Type	Weight	Vis.	Fluid Loss
0-120'	Spud Mud/Air/Air Mist	8.4-9.0	40-50	no control
0-2220'	Polymer Mud/Polymer Starch	8.4-9.0	40-50	no control

Casing Program (as listed, the equivalent, or better):

Hole Size	Depth Interval	Csg. Size	Wt.	Grade
8 3/4"	0' - 120'	7"	20#	J-55
6 1/4"	0' - 2220'	4 1/2"	10.5#	J-55

Tubing Program:

0' - 2220'	2 3/8"	4.7#	J-55
------------	--------	------	------

Float Equipment: 7" surface casing - guide shoe. Centralizers will be run in accordance with Onshore Order #2.

4 1/2" production casing - guide shoe and float collar. Standard centralizers run every third joint above shoe. Two turbolizing type centralizers - one below and one into the base of the Ojo Alamo @ 685'. Standard centralizers thereafter every fourth joint up to the base of the surface pipe.

Wellhead Equipment: 7" x 4 1/2" x 2 3/8" 2000 psi xmas tree assembly.

Cementing:

7" surface casing - ³⁴
Pre-Set Drilled Cement with 42 sx Type I, II cement with 20% flyash mixed at 14.5 ppg, 1.61 cu ft per sack yield. (54 cu ft of slurry, bring cement to surface) Wait on cement for 24 hours for pre-set holes before pressure testing or drilling out from under surface.

Conventionally Drilled

Cement with 42 sx Type III cement with 0.25 pps Celloflake, 3% CaCl. (54 cu ft of slurry, 200% excess, bring cement to surface) Wait on cement for 8 hrs for conventionally set holes before pressure testing or drilling out from under surface.

WOC until cement establishes 250 psi compressive strength prior to NU of BOPE.

4 1/2" production casing - lead w/102 sacks Premium Lite with 3% calcium chloride, 5 pps LCM-1, and 1/4#/sack celloflake, 0.4% FL-52, & 0.4% SMS. Tail with 90 sacks Type III cmt with 1% calcium chloride, 1/4#/sack celloflake and 0.2% FL-52 (341 cu.ft., 50% excess to circulate to surface).

Note: If open hole logs are run, cement volumes will be based on 25% excess over caliper volumes.

BOP and tests:

Surface to production TD - 11" 2000 psi (minimum) double gate BOP stack (Reference Figure #1). Prior to drilling out surface casing, test BOPE to 600 psi for 30 min.

From surface to production TD - a choke manifold will be installed in accordance with Onshore Order No. 2 (Reference Figure #3).

Pipe rams will be actuated at least once each day and blind rams actuated once each trip to test proper functioning. An upper kelly cock valve with handle and drill string safety valves to fit each drill string will be maintained and available on the rig floor.

Additional information:

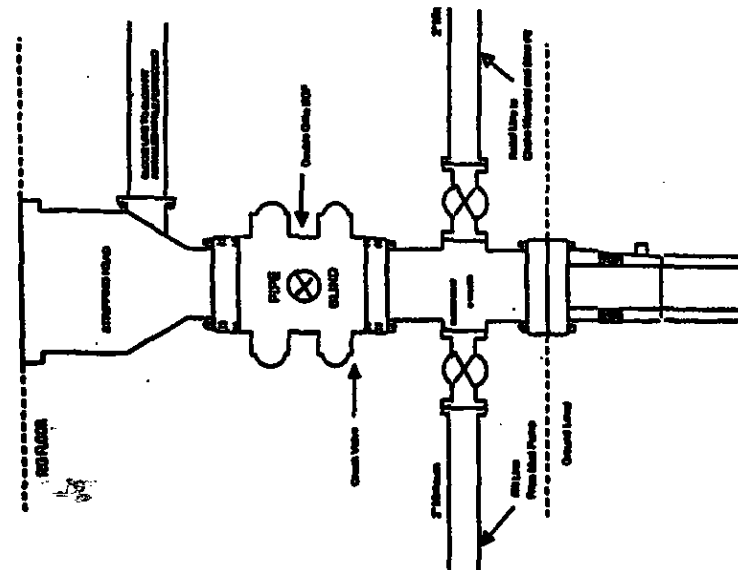
- * The Fruitland Coal formation will be completed.
- * Anticipated pore pressure for the Fruitland is less than 500 psi.
- * This gas is dedicated.
- * South half of Section 24 is dedicated to the Fruitland Coal.

Date: 2/17/06

Drilling Engineer: 

BURLINGTON RESOURCES

Completion/Workover Rig
BOP Configuration
2,000 psi System

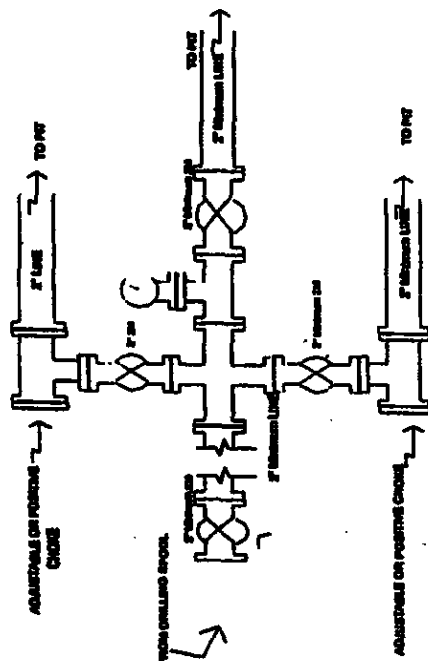


Minimum BOP Installation for all Completion/Workover Operations. 7-1/4\" Bore, 2000 psi minimum working pressure double gate BOP to be equipped with blind and pipe rams. A stripping head to be installed on the top of the BOP. All BOP equipment is 2000 psi working pressure or greater excluding 500 psi stripping head.

Figure #2

BURLINGTON RESOURCES

Drilling Rig
Choke Manifold Configuration
2000 psi System



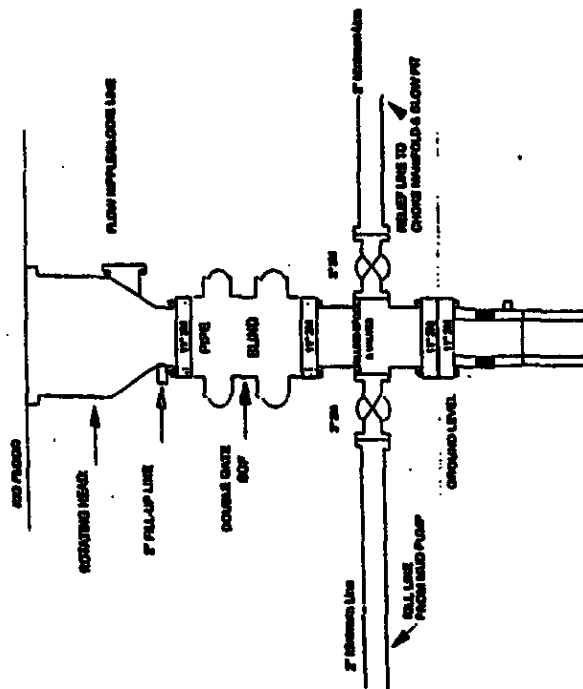
Choke manifold installation from Surface Casing Point to Total Depth. 2,000psi working pressure equipment with two chokes.

Figure #3

4-20-01

Burlington Resources

Drilling Rig
20000 psi System



BOP Installation from Surface Casing Point to Total Depth. 11\" Bore 20,000 psi working pressure double gate BOP to be equipped with blind and pipe rams. A stripping head to be installed on top of the BOP. All BOP equipment is 20,000 psi working pressure.

Figure #1

4-20-01