


**UNITED STATES
DEPARTMENT OF THE INTERIOR
BUREAU OF LAND MANAGEMENT**

Sundry Notices and Reports on Wells

<p>1. Type of Well GAS</p> <p>2. Name of Operator ConocoPhillips</p> <p>3. Address & Phone No. of Operator PO Box 4289, Farmington, NM 87499 (505) 326-9700</p> <p>4. Location of Well, Footage, Sec., T, R, M Sec., T—N, R—W, NMPM Unit F (SENW), 1770' FNL & 1520' FWL, Sec. 18, T32N, R7W NMPM</p>	<p>2007 MAY -4 PM 3:24</p> <p>RECEIVED BLM 210 FARMINGTON NM</p> 	<p>5. Lease Number SF-078460</p> <p>6. If Indian, All. or Tribe Name</p> <p>7. Unit Agreement Name</p> <p>8. Well Name & Number San Juan 32-7 Unit 76</p> <p>9. API Well No. 30-045-25081</p> <p>10. Field and Pool Blanco MV/ S. Los Pinos PC</p> <p>11. County and State San Juan, NM</p>
--	---	--

12. CHECK APPROPRIATE BOX TO INDICATE NATURE OF NOTICE, REPORT, OTHER DATA

Type of Submission:

- ☒ Notice of Intent
- ☐ Subsequent Report
- ☐ Final Abandonment

Type of Action:

- ☒ Abandonment (PC)
- ☐ Recompletion
- ☐ Plugging
- ☐ Casing Repair
- ☐ Altering Casing
- ☐ Change of Plans
- ☐ New Construction
- ☐ Non-Routine Fracturing
- ☐ Water Shut-off
- ☐ Conversion to Injection

☐ Other :

13. Describe Proposed or Completed Operations

ConocoPhillips intends to abandon the PC formation and produce the well as a single MV. Please see attached procedure and WBD.

**SEE ATTACHED FOR
CONDITIONS OF APPROVAL**

14. I hereby certify that the foregoing is true and correct.

Signed Philana Thompson Title Regulatory Technician Date 5/4/07

(This space for Federal or State Office use)

APPROVED BY Raymond Thompson Title Act. Dir. Date 5-7-07

CONDITION OF APPROVAL, if any:

Title 18 U.S.C. Section 1001, makes it a crime for any person knowingly and willfully to make any department or agency of the United States any false, fictitious or fraudulent statements or representations as to any matter within its jurisdiction.

NMOCD

PROCEDURE:

1. Hold pre-job safety meeting. Comply with all NMOCD, BLM, and COPC safety and environmental regulations. Test rig anchors prior to moving in rig.
2. MIRU workover rig. Check casing, tubing, and bradenhead pressures and record them in Wellview.

Remove Tubing Strings

3. If necessary, kill well w/ 2% KCL water (contingent on Category designation of well; refer to COPC well control manual). ND wellhead and NU BOPE. (refer to COPC well control manual, Sec 6.13). This well is a Class 2, Category 1 well. Leave BPV set in longstring while working with shortstring.
4. Unseat 1-1/4" tubing hanger, POOH and lay down 1-1/4" IJ production tubing.
5. Unseat 2-3/8" tubing hanger and Model F packer seal assembly. POOH 2-3/8" production tubing. Check for hole in the tubing and LD any bad joints. Stand back tubing. Measure the OD on the seal assembly to verify 4" seal bore.
6. RIH w/ mill and plucker for a 7" Model F packer w/ 4" seal bore (Same as Model D). Mill out packer and pluck it.

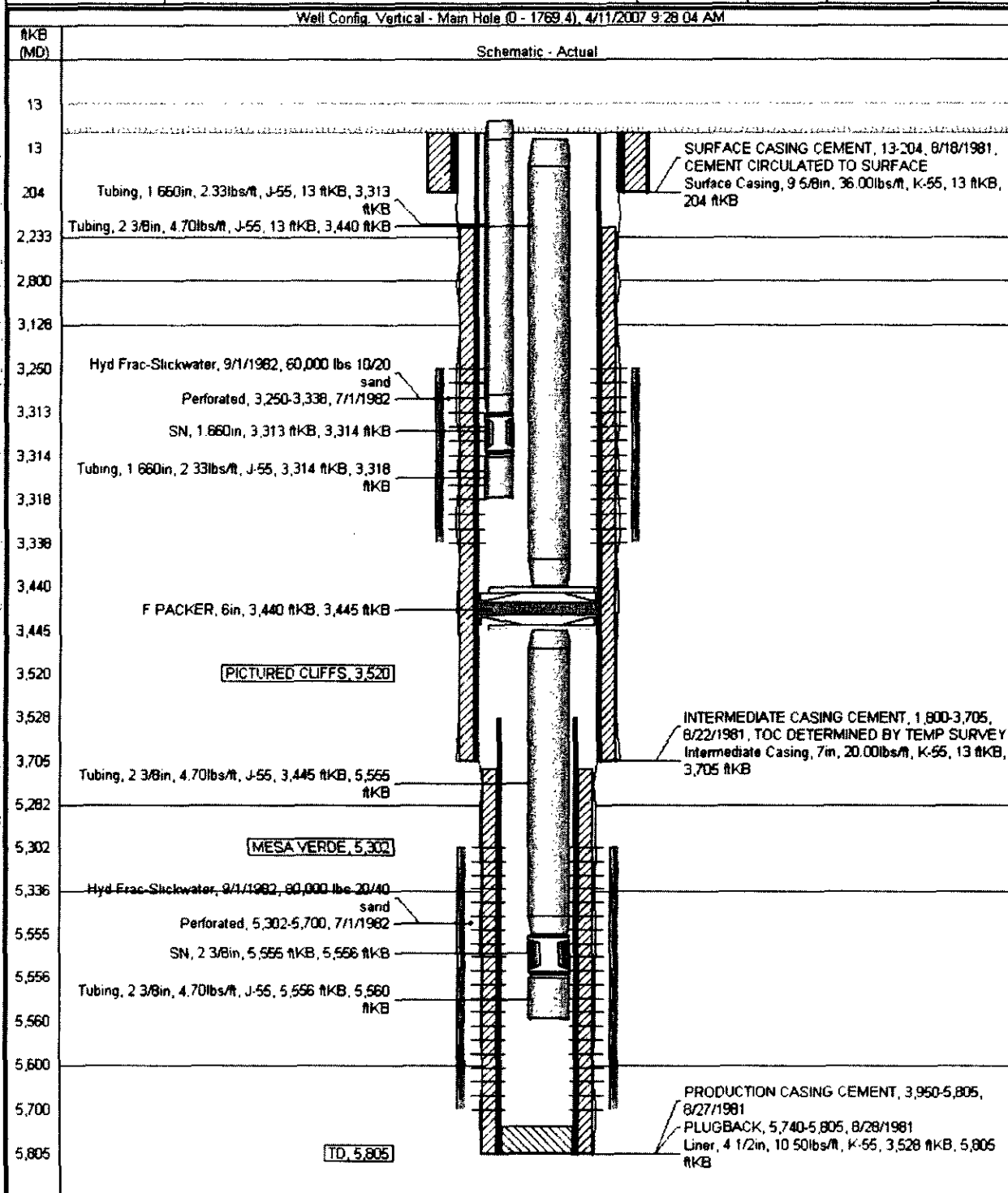
Squeeze PC Perfs

7. PU a 6.331" gauge ring and RIH via sandline to 3450' and POOH w/ gauge ring. If the gauge ring will not pass, PU and RIH w/ a 7" 20# casing scraper (drift ID: 6.331") on 2-3/8" tubing to at least 3450'.
8. RIH w/ 7" RBP piggybacked with a 7" multiset packer on 2-3/8" tubing and set the RBP at +/- 3400'. Pull up a stand and set the packer and test the RBP to 500 psi. Release the packer. Pump three sacks of sand down the tubing and cut the pumps a few barrels short. PU on the tubing and let the sand fall to the bottom.
9. Set the packer at +/-3200'. Establish an injection rate into the PC perforations with fresh water.
10. Squeeze perforations according to engineer and service company recommendations. Notify COP Regulatory department and/or NMOCD/BLM before beginning any squeeze operations.
11. WOC at least 24 hours.
12. Configure both casing valves to blow to the pit with drilling returns. RU air package. PU and RIH w/ 6-1/4" bit, several DC's, and 2-3/8" tubing and DO to the top of the sand over the RBP +/-3400' + 15'. Do not tag RBP.

Primary Contact: Mike Megorden
Office Phone: 505-324-5142
Cell Phone: 505-947-4315

Alternate Contact: Allan Rambur
Office Phone: 505-324-5163
Cell Phone: 505-320-1402

District	Field Name	API / UWI	County	State/Province	Edt
Original Spud Date	Surface Legal Location	EW Dist (ft)	EW Ref	NS Dist (ft)	NS Ref



BLM CONDITIONS OF APPROVAL

WORKOVER AND RECOMPLETION OPERATIONS:

- 1. If casing repair operations are needed, obtain prior approval from this office before commencing repairs.**
- 2. A properly functioning BOP and related equipment must be installed prior to commencing workover and/or recompletion operations.**

SURFACE USE OPERATIONS:

The following Stipulations will apply to this well unless a particular Surface Managing Agency or private surface owner has supplied to BLM and operator a contradictory environmental stipulation. The failure of operator to comply with these requirements may result in assessments or penalties pursuant to 43 CFR 3163.1 or 3163.2. A copy of these conditions of approval shall be present on location during construction, drilling and reclamation activity.

An agreement between operator and fee landowner will take precedence over BLM surface stipulations unless (in reference to 43 CFR Part 3160) 1) BLM determines that operator's actions will affect adjacent Federal or Indian surface, or 2) operator does not maintain well area and lease premises in a workmanlike manner with due regard for safety, conservation and appearance, or 3) no such agreement exists, or 4) in the event of well abandonment, minimal Federal restoration requirements will be required.

STANDARD STIPULATIONS: All surface areas disturbed during work-over activities and not in use for production activities will be reseeded. This should occur in the first 90 days after completion of work-over activities.

SPECIAL STIPULATIONS:

- 1. Pits will be fenced during work-over operation.**
- 2. All disturbance will be kept on existing pad.**
- 3. All pits will be pulled and closed immediately upon completion of the work-over activities.**
- 4. Pits will be lined with an impervious material at least 12 mils thick.**