

RECEIVED

Form 3160-3
(August 1999)

2003 APR 15 PM 1:37

FORM APPROVED
OMB NO. 1004-0136
Expires: November 30, 2000

**UNITED STATES
DEPARTMENT OF THE INTERIOR
BUREAU OF LAND MANAGEMENT
APPLICATION FOR PERMIT TO DRILL OR REENTER**

1a. TYPE OF WORK



DRILL



REENTER

b. TYPE OF WELL



OIL



GAS WELL



OTHER



SINGLE ZONE



MULTIPLE ZONE

2. Name of Operator

Coleman Oil & Gas, Inc.

3a. Address

P.O. Drawer 3337, Farmington N.M. 87499

3b. Phone No. (include area code)

(505) 327-0356

4. Location of well (Report location clearly and in accordance with any State requirements.)*

At surface

1100' FNL, 1100' FEL Latitude 36° 19' 56", Longitude 107° 54' 46"

At proposed prod. zone

14. DISTANCE IN MILES AND DIRECTION FROM NEAREST TOWN OR POST OFFICE*

South East of Farmington New Mexico on County RD. 7515 approximately 40 miles.

15. Distance from proposed*

location to nearest
property or lease line, ft.

(Also to nearest drlg unit line, if any)

1100'

16. No. of Acres in lease

160

17. Spacing Unit dedicated to this well

320 ACRES N/2

18. Distance from proposed location*

to nearest well, drilling, completed,
applied for, on this lease, ft.

NA

19. Proposed Depth

1615'

20. BLM/ BIA Bond No. on file

BIA Blanket Bond #08510607

21. ELEVATIONS (Show whether DF, RT, GR, etc.)

6746'

22. Approximate date work will start*

June-03

23. Estimated Duration

2 Weeks

24. Attachments

The following, completed in accordance with the requirements of Onshore Oil and Gas Order No. 1 shall be attached to this form:

- | | |
|---|--|
| 1. Well plat certified by a registered surveyor.
2. A Drilling Plan.
3. A Surface Use Plan (if the location is on National Forest System Lands, the SUPO shall be filed with the appropriate Forest Service Office). | 4. Bond to cover the operations unless covered by existing bond on file(see item 20 above).
5. Operator certification.
6. Such other site specific information and/ or plans as may be required by the a authorized officer. |
|---|--|

25. Signature

Name (Printed/ Typed)

Michael T. Hanson

DATE

24-Mar-03

Title

Operations Engineer

Approved By (Signature)

Name (Printed/ Typed)

DATE

SEP 18 2003

Title

Office

Application approval does not warrant or certify that the applicant holds legal or equitable title to those rights in the subject lease which would entitle the applicant to conduct operations thereon.

Conditions of approval, if any, are attached.

Title 18 U.S.C. Section 1001 and Title 43 U.S.C. Section 1212, make it a crime for any person knowingly and willfully to make to any department or agency of the United States any false, fictitious or fraudulent statements or representations as to any matter within its jurisdiction.

*See Instructions On Reverse Side

This action is subject to technical and procedural review pursuant to 43 CFR 3165.3 and appeal pursuant to 43 CFR 3165.4

NMOCD

DRILLING OPERATIONS AUTHORIZED ARE
SUBJECT TO COMPLIANCE WITH ATTACHED
"GENERAL REQUIREMENTS".

District I
PO Box 1980, Hobbs, NM 88241-1980

District II
PO Drawer DD, Artesia, NM 88211-0719

District III
1000 Rio Brazos Rd., Aztec, NM 87410

District IV
PO Box 2088, Santa Fe, NM 87504-2088

State of New Mexico
Energy, Minerals & Natural Resources Department

OIL CONSERVATION DIVISION
PO Box 2088
Santa Fe, NM 87504-2088

Form C-102

Revised February 21, 1994

Instructions on back
Submit to Appropriate District Office
State Lease - 4 Copies
Fee Lease - 3 Copies

☐ AMENDED REPORT

WELL LOCATION AND ACREAGE DEDICATION PLAT

API Number 30-045-31427		Pool Code 71629	Pool Name BASIN FRUITLAND COAL
Property Code 32979	Property Name JUNIPER COM 41		Well Number 11-8
OGRIID No. 4838	Operator Name COLEMAN OIL & GAS, INC.		Elevation 6746'

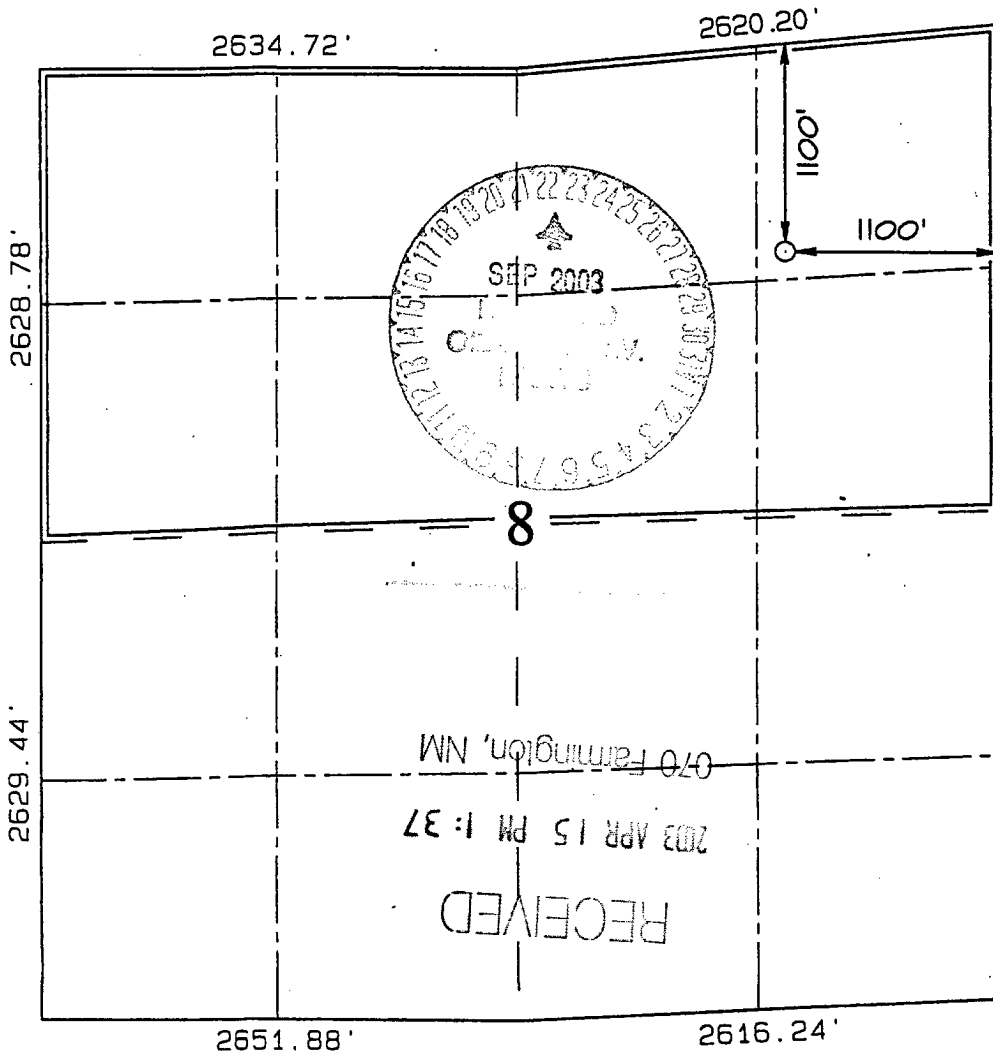
10 Surface Location

UL or lot no.	Section	Township	Range	Lot Idn	Feet from the	North/South line	Feet from the	East/West line	County
A	8	24N	10W		1100'	NORTH	1100'	EAST	SAN JUAN

11 Bottom Hole Location If Different From Surface

UL or lot no.	Section	Township	Range	Lot Idn	Feet from the	North/South line	Feet from the	East/West line	County
Dedicated Acres 320.0 Acres - (N/2)					Joint or Infill	Consolidation Code	Order No.		

NO ALLOWABLE WILL BE ASSIGNED TO THIS COMPLETION UNTIL ALL INTERESTS HAVE BEEN CONSOLIDATED
OR A NON-STANDARD UNIT HAS BEEN APPROVED BY THE DIVISION



17 OPERATOR CERTIFICATION

I hereby certify that the information
contained herein is true and complete
to the best of my knowledge and belief

Signature
Michael T. Hanson
Printed Name
Michael T. HANSON
Title
Engineer
Date
3/25/03

18 SURVEYOR CERTIFICATION

I hereby certify that the well location
shown on this plat was plotted from field
notes of actual surveys made by me or under
my supervision, and that the same is true
and correct to the best of my belief.

Date of Survey: **JULY 9, 2002**

Signature and Seal of Professional Surveyor



JASON C. EDWARDS
Certificate Number 15269

Tuesday, February 11, 2003

OPERATIONS PLAN

Well Name: Juniper Com #41-8
Location: 1100' FNL, 1100' FEL Section 8, T-24-N, R-10-W, NMPM
San Juan County, NM
Formation: Basin Fruitland Coal
Elevation: 6746' GL

Formation:	Top	Bottom	Contents
Nacimiento	Surface	640'	aquifer
Ojo Alamo	640'	725'	aquifer
Kirtland	725'	1215'	
Fruitland	1215'	1465'	gas
Pictured Cliffs	1465'	1615'	gas
Total Depth	1615'		

Drilling Contractor: Availability

Mud Program:

<u>Interval</u>	<u>Type</u>	<u>Weight</u>	<u>Vis.</u>	<u>Fluid Loss</u>
0 - 120'	Spud	8.4 - 9.0	40 - 50	no control
120 - 1615'	Non-dispersed	8.4 - 9.0	30 - 60	6cc or less

Logging Program: Porosity Log - Triple Litho Density W/ GR and CAL.
Induction Log - Array Induction W/ GR and SP

Coring Program: None

Casing Program:

<u>Hole Size</u>	<u>Depth Interval</u>	<u>Csg. Size</u>	<u>Wt.</u>	<u>Grade</u>
12 1/4"	0' - 120'	8 5/8"	24#	J-55 or K-55
7 7/8"	120' - 1615'	5 1/2"	15.5#	J-55 or K-55

Tubing Program:

0' - 1500'	2 7/8"	6.50#	J-55
------------	--------	-------	------

Float Equipment:

8 5/8" surface casing - saw tooth guide shoe. One Centralizer.

5 1/2" production casing - Cement guide shoe and self fill insert float collar. Place float one joint above shoe. Five centralizers spaced every other joint above shoe and five turbolizers every other joint from top of well.

Wellhead Equipment: 8 5/8" x 5 1/2" Braiden Head and 5 1/2" x 2 7/8" Tubing Head.
Independent Well Head assembly with a minimum rated working pressure of 1000 psig.

Cementing:

8 5/8" Surface Casing -

Cement with 84 sacks Class "B" cement with 1/4# celloflake/sx and 2% calcium chloride (83.93 cu. ft. of slurry, 100% excess to circulate to surface). WOC 12 hrs. Test casing to 600 psi/30 minutes.

5 1/2" Production Casing -

Before cementing circulate hole with at least 1 1/2 hole volumes of mud. Precede cement with 30 bbls of fresh water. Lead with 203 sx (417.87 cu. ft.) of CI "B" with 2% metasilicate and 1/4#/sk celloflake. (Yield = 2.06 cu. ft. /sk; slurry weight = 12.5 PPG). Tail with 85 sx (100.30 cu. ft.) of CI "B" with 2% CaC1 and 1/4#/sk celloflake. (Yield = 1.18 cu. ft. / sk; slurry weight = 15.6 PPG). Total cement volume is 518.17 cu. ft. (100% excess on open hole, calculated on cement volumes). WOC 12 hrs. Test casing to 600 psi/30 minutes. *Circulate cement*

BOP and Tests: Surface to TD - 11" 2000 psi (minimum) double gate BOP stack (Reference Figure #1). Prior to drilling out surface casing, test rams to 1000# / 30 min.

From surface to TD - choke manifold (Reference Figure #3).

Pipe rams will be actuated at least once each day and blind rams actuated once each trip to test proper functioning. An upper kelly cock valve with handle and drill string safety valves to fit each drill string will be maintained and available on the rig floor.

Additional information:

- The Fruitland Coal formation will be completed.
- Anticipated pore pressure for the Fruitland is 300 psi.
- New casing will be utilized.
- Pipe movement (either rotation or reciprocation) will be done if hole conditions permit.

Date: 3/25/03 Drilling Engineer: Michael T. Hanson