

UNITED STATES
DEPARTMENT OF THE INTERIOR
BUREAU OF LAND MANAGEMENT

FORM APPROVED
OMB No 1004-0137
Expires March 31, 2007

APPLICATION FOR PERMIT TO DRILL OR REENTER

2007 JUN 12 PM 4:06

55 Lease Designation and Serial No
NMNM-99738

6. If Indian, Allottee or Tribe Name

1a Type of Work DRILL REENTER
1b Type of Well Oil Well Gas Well Other Single Zone Multiple Zone

7 If Unit or CA, Agreement, Name and No

8. Lease Name and Well No.
Synergy 21-7-20 # 159

2. Name of Operator
Synergy Operating, LLC NM OGRID # 163458

9 API Well No
30-043-21045

3a. Address PO Box 5513 Farmington, NM 87499
3b Phone Number (505) 325-5449

10 Field and Pool, or Exploratory
Basin Fruitland Coal

11 Sec , T , R , M , or Blk and Survey or Area

4 Location of Well (Footage, Sec, T, R, M, or Survey Description)
At surface Unit Letter E, 1780' FNL, 845' FWL, Sec 20, T21N-R7W
At proposed prod. Zone. Same

Sec 20, T-21-N, R-07-W

14. Distance in miles and direction from nearest town or post office*
12 Miles South of Lybrook, New Mexico. Turn South US Hwy 550 MM - 113.25

12. County or Parish, Sandoval
13 State New Mexico

15 Distance from proposed* location to nearest property or lease line, ft.
1780 Feet from North Line
(Also to nearest drlg Unit line, if any)

16. No of Acres in lease
2,160.00 Acres

17 Spacing Unit dedicated to this well
320
~~321-83~~ Acres - North Half

18 Distance from proposed* location to nearest property or lease line, ft
845 Feet from West Line

19 Proposed Depth
950'

20 BLM/BIA Bond No on file
NM-2559

21 Elevation (Show whether DF, KDB, RT, GL, etc)
6824' Ground Level

22 Approximate date work will start*
August 1, 2007

23 Estimated duration
30 days

24. Attachments

The following, completed in accordance with the requirements of Onshore Oil and Gas Order No. 1, shall be attached to this form:

- Well plat certified by a registered surveyor
- A Drilling Plan
- A Surface Use Plan (if the location is on National Forest System Lands, the SUPO shall be filed with the appropriate Forest Service Office)
- Bond to cover the operations unless covered by an existing bond on file (see Item 20 above)
- Operator certification.
- Such other site specific information and/or plans as may be required by the authorized officer

Size of Hole	Grade, Size of Casing	Weight per Foot	Setting Depth	Quantity of Cement
12-1/4"	8-5/8" K-55	24 #	120'	70 sxs, 99 ft3 - 100% Excess
7-7/8"	5-1/2" K-55	15.5#	950'	236 sxs, 329 ft3 - 100% OH Excess

LEASE EXPIRES 9/30/2007

SEE ATTACHED APD INFORMATION

Latitude: 36.03939 Deg N
Longitude: 107.60569 Deg W

25 Signature *[Signature]* Name (Printed/Typed) Thomas E. Mullins Date 6-12-2007
Title Engineering Manager

Approved by (Signature) *[Signature]* Name (Printed/Typed) Office FEO Date 7/3/07
Title AEM RCVD JUL 6 '07

Application approval does not warrant or certify the applicant holds legal or equitable title to those rights in the subject lease which would entitle the applicant to conduct operations thereon
Conditions of approval, if any, are attached. OIL CONS. DIV.

Title 18 U S C Section 1001 and Title 43 U S C Section 1212, make it a crime for any person knowingly and willfully to make to any department or agency of the United States any false, fictitious, or fraudulent statements or representations as to any matter within its jurisdiction. DIST. 3

*(Instructions on reverse) Obtain a pit permit from NM OCP prior to constructing location

DRILLING OPERATIONS AUTHORIZED ARE SUBJECT TO COMPLIANCE WITH ATTACHED "GENERAL REQUIREMENTS".

NMOCD

7-17-07
BH

This action is subject to technical and procedural review pursuant to 43 CFR 3165.9 and appeal pursuant to 43 CFR 3165.4

DISTRICT II
811 South First, Artesia, N.M. 88210

Submit to Appropriate District Office
State Lease - 4 Copies
Fee Lease - 3 Copies

DISTRICT III
1000 Rio Brazos Rd., Aztec, N.M. 87410

OIL CONSERVATION DIVISION
2040 South Pacheco
Santa Fe, NM 87505

DISTRICT IV
2040 South Pacheco, Santa Fe, NM 87505

AMENDED REPORT

2007 JUN 12 PM 4:06

WELL LOCATION AND ACREAGE DEDICATION PLAT

*API Number 30-043-21045		*Pool Code 71629	*Pool Name Basin FRUITLAND COAL
*Property Code 36598	*Property Name SYNERGY 21-7-20		*Well Number 159
*OGRID No. 163458	*Operator Name SYNERGY OPERATING, L.L.C.		*Elevation 6824'

¹⁰ Surface Location

UL or lot no.	Section	Township	Range	Lot Idn	Feet from the	North/South line	Feet from the	East/West line	County
E	20	21N	7W		1780'	NORTH	845'	WEST	SANDOVAL

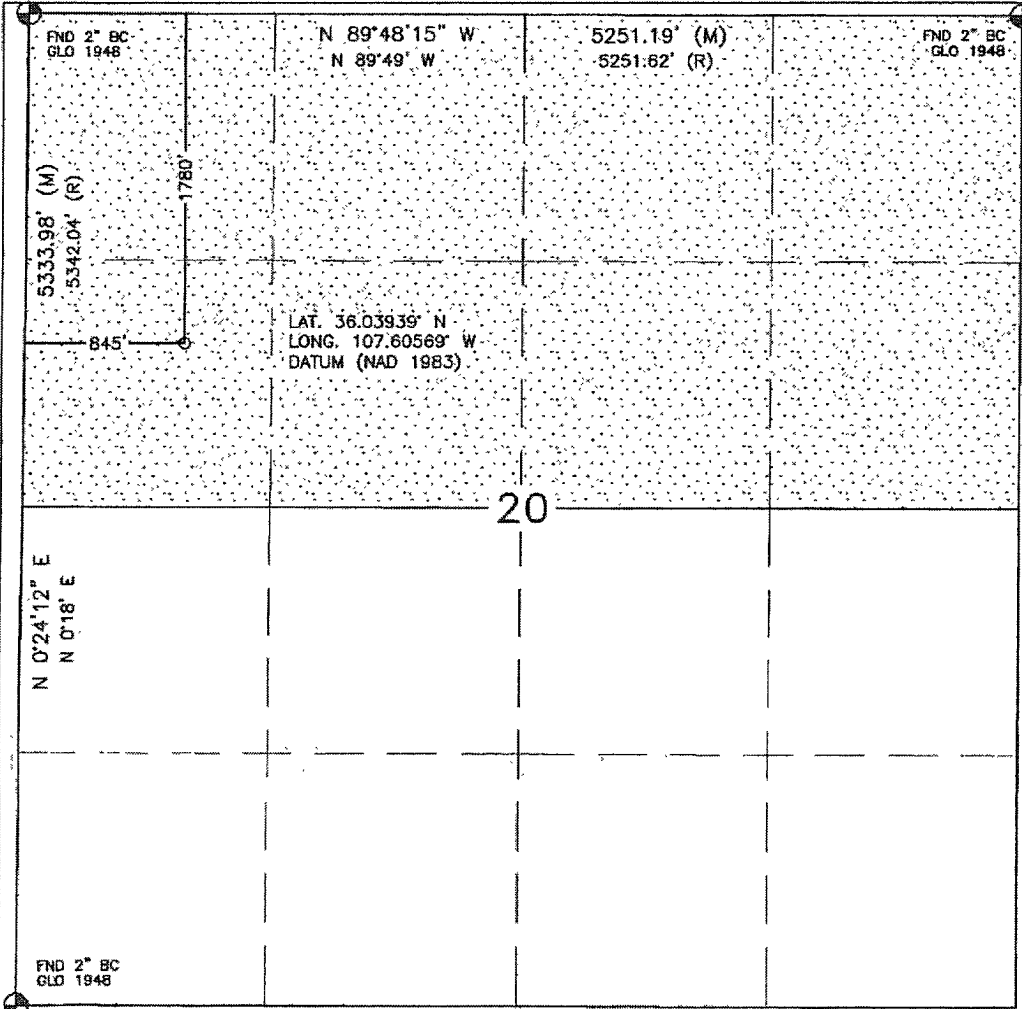
¹¹ Bottom Hole Location If Different From Surface

UL or lot no.	Section	Township	Range	Lot Idn	Feet from the	North/South line	Feet from the	East/West line	County
---------------	---------	----------	-------	---------	---------------	------------------	---------------	----------------	--------

¹² Dedicated Acres 32.0 321.83 Acres - (N/2)	¹³ Joint or Infill	¹⁴ Consolidation Code	¹⁵ Order No.
--	-------------------------------	----------------------------------	-------------------------

NO ALLOWABLE WILL BE ASSIGNED TO THIS COMPLETION UNTIL ALL INTERESTS HAVE BEEN CONSOLIDATED OR A NON-STANDARD UNIT HAS BEEN APPROVED BY THE DIVISION

16



¹⁷ OPERATOR CERTIFICATION

I hereby certify that the information contained herein is true and complete to the best of my knowledge and belief

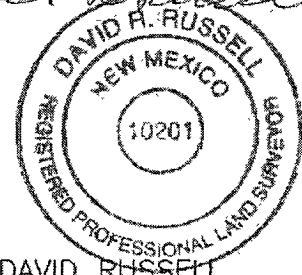
Thomas E. Mullins
Signature
THOMAS E. MULLINS
Printed Name
ENGINEERING MANAGER
Title
10-5-06
Date

¹⁸ SURVEYOR CERTIFICATION

I hereby certify that the well location shown on this plat was plotted from field notes of actual surveys made by me or under my supervision, and that the same is true and correct to the best of my belief.

AUGUST 22, 2006
Date of Survey

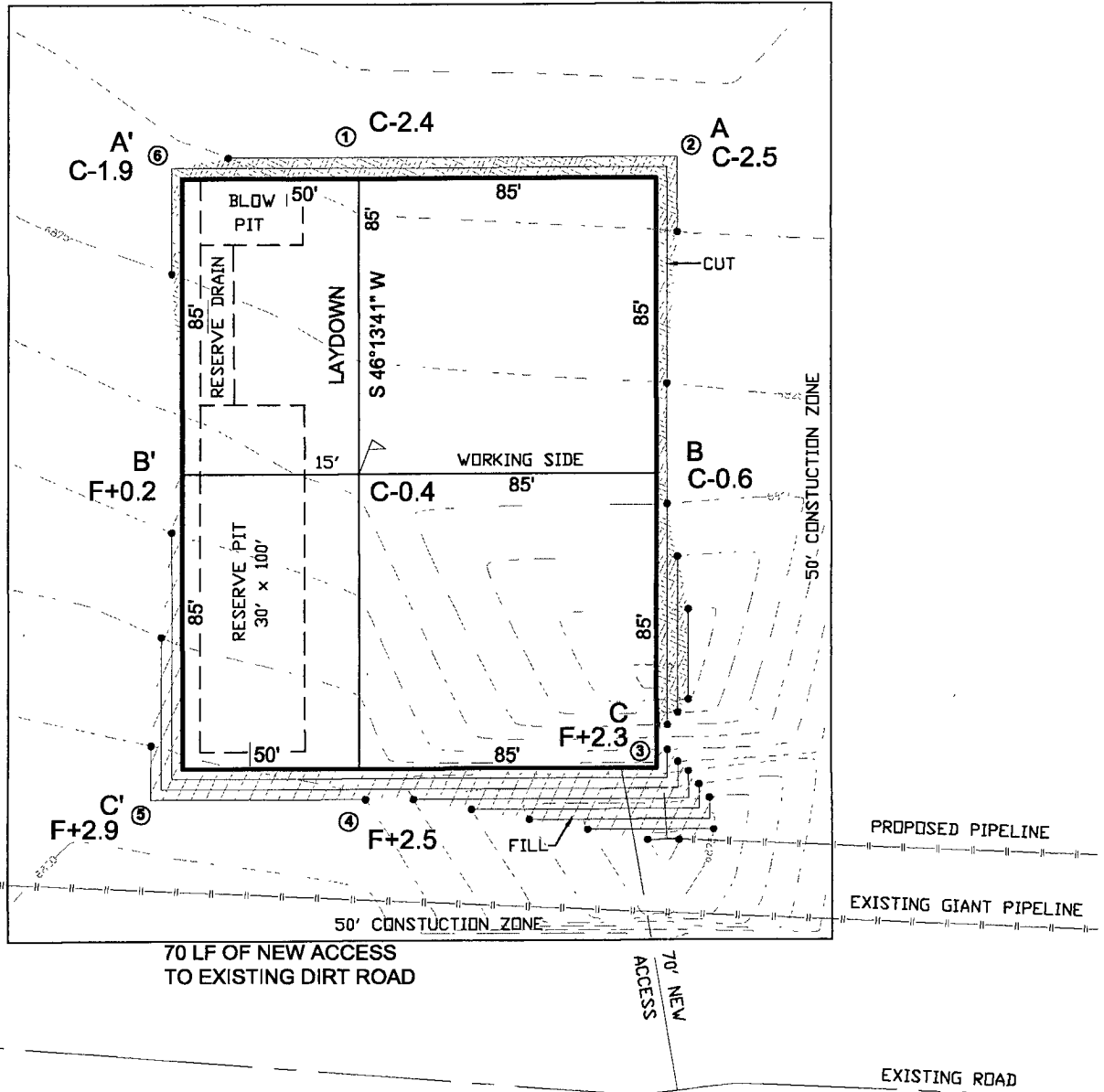
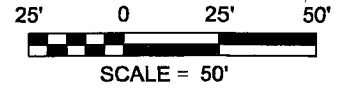
Signature and Seal of Professional Surveyor:
David R. Russell



DAVID RUSSELL
Certificate Number 10201

LATITUDE: 36.03939°N
LONGITUDE: 107.60569°W
DATUM: NAD 83

SYNERGY OPERATING, L.L.C.
SYNERGY 21-7-20 #159
1780' FNL & 845' FWL
LOCATED IN THE SW/4 NW/4 OF
SECTION 20, T21N, R7W, N.M.P.M.,
SANDOVAL COUNTY, NEW MEXICO
GROUND ELEVATION: 6824', NAVD 88
FINISHED PAD ELEVATION: 6823.8', NAVD 88

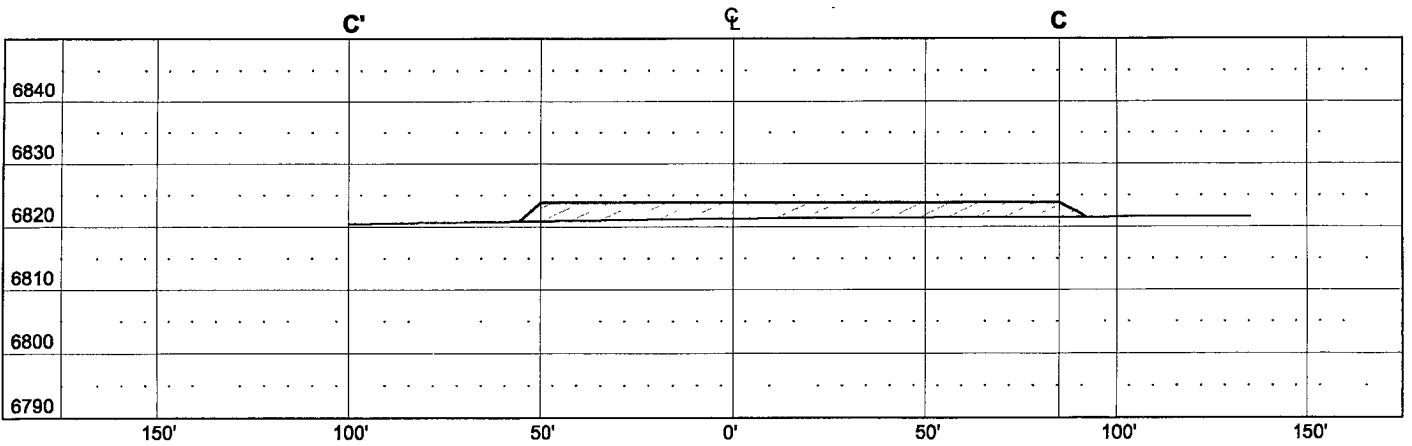
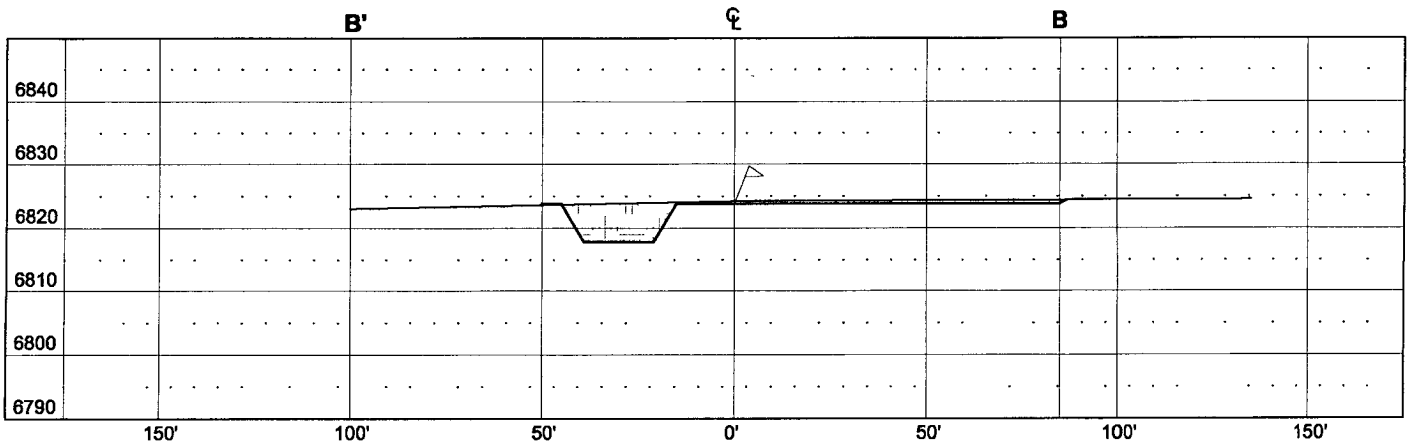
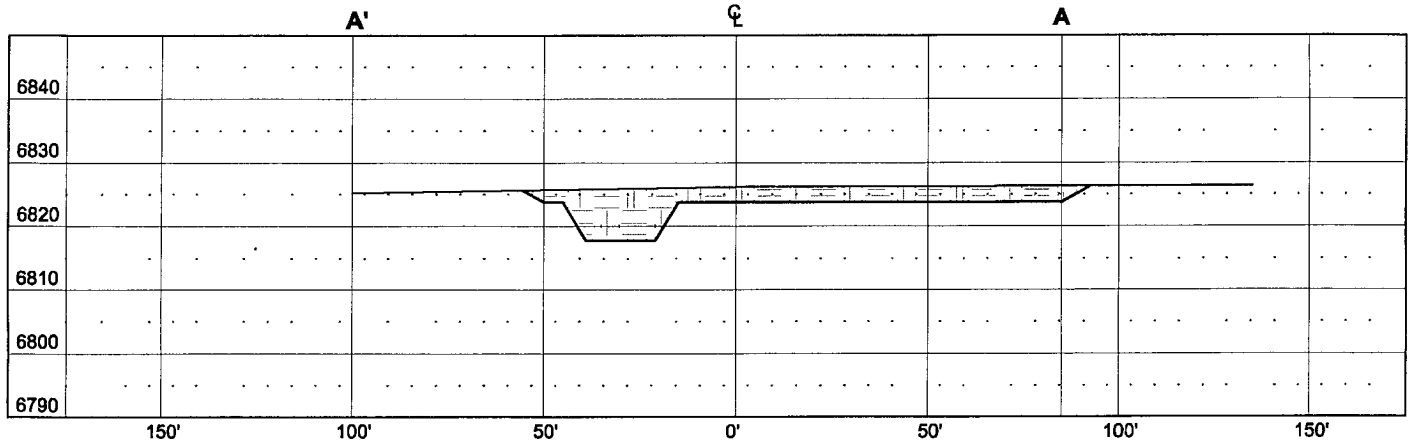


1 FOOT CONTOUR INTERVAL SHOWN
SCALE: 1" = 50'
JOB No.: SYN041
DATE: 08/23/06

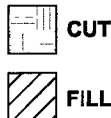


Russell Surveying
1409 W. Aztec Blvd. #5
Aztec, New Mexico 87410
(505) 334-8637

SYNERGY OPERATING, L.L.C.
 SYNERGY 21-7-20 #159
 1780' FNL & 845' FWL
 LOCATED IN THE SW/4 NW/4 OF
 SECTION 20, T21N, R7W, N.M.P.M.,
 SANDOVAL COUNTY, NEW MEXICO
 GROUND ELEVATION: 6824', NAVD 88
 FINISHED PAD ELEVATION: 6823.8', NAVD 88



VERT. SCALE: 1" = 30'
 HORZ. SCALE: 1" = 50'
 JOB No.: SYN041
 DATE: 08/23/06




Russell Surveying
 1409 W. Aztec Blvd. #5
 Aztec, New Mexico 87410
 (505) 334-8637

Synergy Operating LLC

Operations Plan

Well Name: Synergy 21-7-20 # 159

Location: Unit E – 1780’ FNL, 845’ FWL, Sec. 20, T-21-N, R-7-W, Sandoval Co. NM
Latitude 36.03939° N, Longitude 107.60569° W (NAD 83)

Field: Basin Fruitland Coal (North Half Spacing Unit)

Elevation: 6824’ GL

GEOLOGIC PROGRAM

Formations:	Tops/Depth	Fluids
Base Ojo/Top Kirtland	Surface	None
Fruitland	344’	Natural gas & produced water
Lower Fruitland Coal	652’	Natural gas & produced water
Pictured Cliffs	724’	Natural gas & produced water
TOTAL Depth	904’	

Logging Program:

- A) Open Hole: Density/Caliper & Gamma Ray: TD to Surface Csg Shoe
- B) Cased Hole: GR-CCL

Mudlogs, Cores, DST’s:

No mudlogs, coring or drill-stem testing (DST’s) are scheduled.

Anticipated Downhole Conditions:

It is not anticipated that any abnormal temperatures, abnormal pressures or hydrogen sulfide gas will be encountered. The maximum anticipated formation pressures are expected to be less than 300-PSIG. A minimum of MMS Class 1 BOP equipment will be used.

DRILLING PROGRAM

Contractor: A local rotary drilling company is yet to be determined.

Mud Program: Freshwater based mud system will be utilized. Water sourced from commercial suppliers. We anticipate using thirty (30) – fifty (50#) sacks of bentonite clay, and three (3) – five (5) gallon pails of poly-plus.

Depth	Type	Viscosity	#’s/Gal
0-120’	Spud	40-50	8.4-8.9
120’-TD	Low Solids, Non-dispersed	30-60	8.4-9.5*

* Barite will be used as a weighting material if needed, though not anticipated

Pressure Control / Blow Out Preventers (BOP's):

All BOP systems will be in accordance with MMS Onshore Oil & gas Order No2. Until the drilling contract has been let, the exact make, model and pressure rating of BOP's is unknown. A typical double gate BOP with a rotating head is shown in the attached Exhibit #1. A typical Choke & Kill manifold is also shown in the attached Exhibit #1.

The minimum requirements necessary to drill this well comply with a Class 1 Well Control Equipment rated to 1000 psi operating conditions.

An upper kelly cock valve with handle and drill string safety valves for each size of drill pipe will be available on the rig floor.

BOP Testing:

Surface – TD: An 11” 1000#, 2000#, or 3000# double gate BOP Stack & choke manifold will be utilized. Prior to drilling out the surface casing, the rams will be tested to 500#.

Pipe rams will be hydraulically actuated at least once a day. The blind rams will be function tested on each pipe trip. All ram function testing and BOP pressure testing will be recorded on the daily IADC drilling logs.

Casing & Tubing Program:

All casing shall be new and constructed to API standards.

Hole Size	OD	Weight	Grade	GL Set Depth	Clearance Hole/Collar
12-1/4”	8.625”	24#/ft	J-55	0’ – 120’	1.3125”
7-7/8”	5.500”	15.5#/ft	J-55	0’ – TD(900’+/-)	0.9125”
2-3/8”	2.375”	4.7#/ft	J-55	Unknown	

Float Equipment & Centralizers:

8-5/8” Surface Casing: Cement Guide Shoe, 1-Jt 8-5/8” casing as shoe joint, float collar and 8-5/8” casing to surface. A centralizer will be run 10’ above the shoe, secured with a stop ring, around each of the collars of the planned three (3) casing joints. Surface casing will be run to a minimum depth of 120’ to ensure protection of surface waters. No wiper plug will be run, cement will be just be displaced to within 20’ of the shoe. This shoe and casing will be pressure tested prior to drill-out.

5-1/2” Production Casing: Cement guide shoe w/ auto-fill, 1-Jt 5-1/2” casing as shoe joint, float collar, and 5-1/2” casing to surface. A centralizers will be run on every other joint of casing. Additional centralizers will be deployed every other joint from the fifth most bottom joint to surface. Estimated total of twenty (20) centralizers. No turbolizers are planned to be run, as there are no indications of any problems to be encountered with the cementing of such shallow wells. A short joint of 5-1/2” may be run as a marker joint just above the Fruitland Coal.

All strings of casing and all cement will be circulated to the surface and topped off if necessary.

Wellhead Equipment:

A 8-5/8" x 5-1/2" 1000# or 1500# wellhead will be screwed on to the top joint of the 8-5/8" surface casing, w/ 3" or 4" line pipe outlets.

Cementing Program:

8-5/8" Surface Casing: Pump 70-sxs (99-ft³) Type III Cement w/ 3% CaCl₂ + ¼-#/sx Celloflake. Yield = 1.42 ft³/sx, Slurry Weight = 14.5 PPG. Cement volume is 100% of annular excess to ensure circulation to surface. Wait on Cement (WOC) for 8-Hours. Pressure test surface casing to 600# for 15-Minutes.

5-1/2" Production Casing: Pump 236-sxs (329-ft³) Type III Cement w/ 1% CaCl₂ + ¼-#/sx Celloflake + 0.2% FL-52 + 2-#/sx Pheno-Seal. Yield = 1.39 ft³/sx, Slurry Weight = 14.6 PPG. Total slurry volume is 329 ft³.

The projected annular hole volume from 950' to surface is: 164 ft³. Cement volume is 100% excess of annular openhole volume to ensure circulation to surface. Cement will be brought to surface on all strings of casing.

Estimated Drilling Time:

Spud date will occur after the APD has been approved, the location built and a drilling contractor selected. Once drilling operations commence, it is anticipated that the drilling phase should be completed within three (3) days.

Estimated Completion Time:

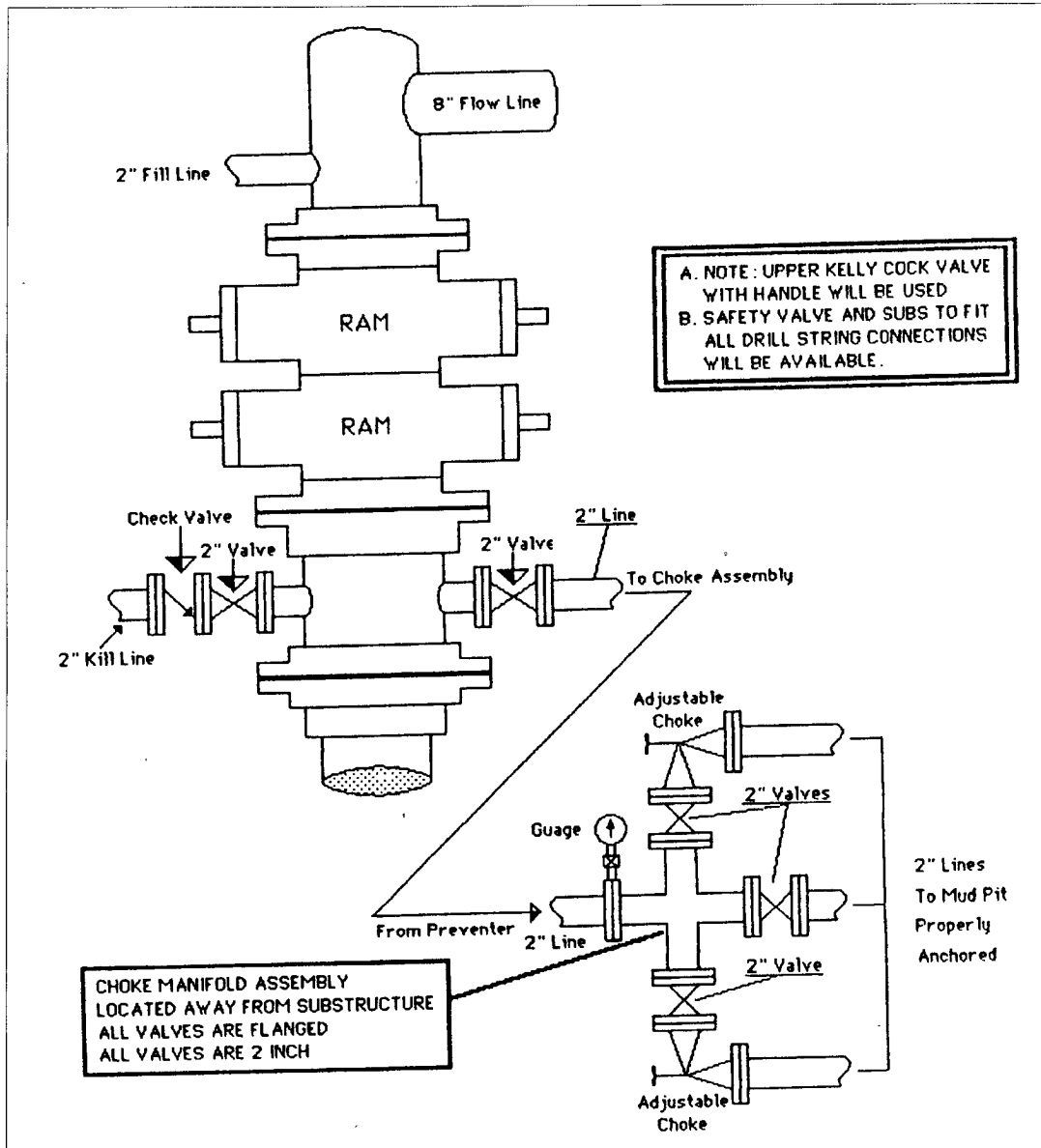
Rig completion activities are estimated to take approximately five (5) days. No separator or production tank is anticipated, only a rod pumping unit or small electric submersible pump will be installed. No oil production is anticipated from this well. A gas meter will be utilized temporarily for 30 days to measure the anticipated gas production.

Synergy will be installing a 4" Gas Sales Line and a 3" water gathering line to gather all produced waters to a central facility should the well be deemed commercial.

Reserve Pit Construction/Closure:

The planned reserve pit is located on the attached plat. The pit dimensions are projected to be 65 feet by 15 feet. The pit will be lined with an approved lining material, a minimum of a 12 mils in thickness. The pit will be constructed and closed per NMOCD general pit guideline information. A form C-144 will be prepared and submitted for the reserve pit in conjunction with this APD submittal.

Synergy Operating, LLC
 San Juan Basin
 1M BOPE - Class 1 BOPE
 Minimum of 1000 psi Working Pressure



A BOP Stack consisting of either a manual two(2) ram preventer, (double or 2 singles) or a single Hydraulic annular preventer with a minimum of 1000 psi working pressure. The upper ram cavity shall contain pipe rams to fit the drill pipe in use. The lower cavity shall contain blind rams.

The choke and kill manifold shall be minimum 2" in diameter and rated to minimum of 1000#.