

UNITED STATES
DEPARTMENT OF THE INTERIOR
BUREAU OF LAND MANAGEMENT

FORM APPROVED
OMB No. 1004-0137
Expires March 31, 2007

SUNDRY NOTICES AND REPORTS ON WELLS

Do not use this form for proposals to drill or to re-enter an abandoned well. Use Form 3160-3 (APD) for such proposals.

SUBMIT IN TRIPLICATE- Other instructions on reverse side.

1. Type of Well
☐ Oil Well ☒ Gas Well ☐ Other

2. Name of Operator **Four Star Oil & Gas Company (131994) (c/o Alan W. Bohling, Rm. 4205)**

3a. Address
15 Smith Road Midland, Texas 79705

3b. Phone No. (include area code)
432-687-7158

4. Location of Well (Footage, Sec., T, R, M., or Survey Description)
**1590' FSL & 990' FEL
NESE, UL I, Sec. 31, T-25-N, R-05-W**

5. Lease Serial No.
Contract #68 AM 11: 22

6. If Indian, Allottee or Tribe Name
Jicarilla

7. If Unit or CA/Agreement, Name and/or No.
Blanco P.C. South/Otero Gallup

8. Well Name and No.
Jicarilla B # 2

9. API Well No.
30-039-05725

10. Field and Pool, or Exploratory Area
Blanco P.C. South/Otero Gallup

11. County or Parish, State
Rio Arriba, New Mexico

12. CHECK APPROPRIATE BOX(ES) TO INDICATE NATURE OF NOTICE, REPORT, OR OTHER DATA

TYPE OF SUBMISSION	TYPE OF ACTION			
<input type="checkbox"/> Notice of Intent	<input type="checkbox"/> Acidize	<input type="checkbox"/> Deepen	<input type="checkbox"/> Production (Start/Resume)	<input type="checkbox"/> Water Shut-Off
<input checked="" type="checkbox"/> Subsequent Report	<input type="checkbox"/> Alter Casing	<input type="checkbox"/> Fracture Treat	<input type="checkbox"/> Reclamation	<input type="checkbox"/> Well Integrity
<input type="checkbox"/> Final Abandonment Notice	<input type="checkbox"/> Casing Repair	<input type="checkbox"/> New Construction	<input type="checkbox"/> Recomplete	<input type="checkbox"/> Other 7/12/07
	<input type="checkbox"/> Change Plans	<input checked="" type="checkbox"/> Plug and Abandon	<input type="checkbox"/> Temporarily Abandon	
	<input type="checkbox"/> Convert to Injection	<input type="checkbox"/> Plug Back	<input type="checkbox"/> Water Disposal	

13. Describe Proposed or Completed Operation (clearly state all pertinent details, including estimated starting date of any proposed work and approximate duration thereof. If the proposal is to deepen directionally or recompleat horizontally, give subsurface locations and measured and true vertical depths of all pertinent markers and zones. Attach the Bond under which the work will be performed or provide the Bond No. on file with BLM/BIA. Required subsequent reports must be filed within 30 days following completion of the involved operations. If the operation results in a multiple completion or recompleat in a new interval, a Form 3160-4 must be filed once testing has been completed. Final Abandonment Notices must be filed only after all requirements, including reclamation, have been completed, and the operator has determined that the site is ready for final inspection.)

Four Star Oil & Gas Company respectfully submits this Subsequent Report of permanent Plug & Abandon of this wellbore.

11-May-07, KEY VACUMNTRUCKS EMPTIED FRAC TANK, LOADED OUT RIG EQUIP, NOTE: RIG OFF YAGER #5 LOCATION 0930 W/ ESCORT TRUCK W/ HEIGHT POLE [RIG = 13'06", POLE = 14'] & TOOL PUSHER LEADING RIG; ALL OTHER EQUIPMENT OFF LOCATION BY 1100 NOTE: ESCORT TRUCK W/ 16' HEIGHT POLE LEADING TRUCK W/ FRAC TANK & 2ND ESCORT W/ TRUCK FLOW BACK TANK, SPOTTED RIG EQUIPMENT & RIG SPOTTED AT 1715 NOTE: NO REPORTED INCIDENTS ON RIG MOVE, NOTE: ON THURSDAY THE 10TH TALKED TO STEVE MASON W/ BLM [505-599-6364] GAVE HIM LEGALS & PLAN. HE HAD KEVIN SCHNEIDER A JICARILLA INSPECTOR [CEMENT] CALL ME. DISCUSSED PLAN TO MOVE IN & SPOT FRIDAY] RU & START ON MONDAY 14TH. HE STATED NO ONE WAS AVAILABLE UNTIL WEDNESDAY THE 16TH. I TOLD HIM THAT PREP WORK WOULD LAST PAST WED. ALSO CALLED & LEFT A MESSAGE W/ MR. HENRY VILLANUEVA W/ OCD [505-334-6178], CALLED & TALKED TO HENRY ON FRIDAY THE 11TH.

RCVD JUL 19 07

(Please see attached Continuation Pages 2 & 3 and Wellbore Diagram)

**OIL CONS. DIV.
DIST. 3**

14. I hereby certify that the foregoing is true and correct
Name (Printed/Typed)

Alan W. Bohling

Title **Regulatory Agent**

Signature

Alan W. Bohling

Date

07/13/2007

THIS SPACE FOR FEDERAL OR STATE OFFICE USE

Approved by

Conditions of approval, if any, are attached. Approval of this notice does not warrant or certify that the applicant holds legal or equitable title to those rights in the subject lease which would entitle the applicant to conduct operations thereon.

Title

Date

Office

Title 18 U.S.C. Section 1001 and Title 43 U.S.C. Section 1212, make it a crime for any person knowingly and willfully to make to any department or agency of the United States any false, fictitious or fraudulent statements or representations as to any matter within its jurisdiction.

(Instructions on page 2)

ACCEPTED FOR RECORD

NMOCD

JUL 18 2007

FARMINGTON FIELD OFFICE

GENERAL INSTRUCTIONS

This form is designed for submitting proposals to perform certain well operations, and reports of such operations when completed, as indicated on Federal and Indian lands pursuant to applicable Federal law and regulations. Any necessary special instructions concerning the use of this

form and the number of copies to be submitted, particularly with regard to local area, or regional procedures and practices, either are shown below or will be issued by, or may be obtained from the local Federal office.

SPECIFIC INSTRUCTIONS

Item 4 - Locations on Federal or Indian land should be described in accordance with Federal requirements. Consult the local Federal office for specific instructions.

Item 13 - Proposals to abandon a well and subsequent reports of abandonment should include such special information as is required by the local Federal office. In addition, such proposals and reports should include reasons for the abandonment; data on any former or

present productive zones, or other zones with present significant fluid contents not sealed off by cement or otherwise; depths (top and bottom) and method of placement of cement plugs; mud or other material placed below, between and above plugs; amount, size, method of parting of any casing, liner or tubing pulled and the depth to top of any left in the hole; method of closing top of well and date well site conditioned for final inspection looking to approval of the abandonment.

NOTICES

The Privacy Act of 1974 and the regulation in 43 CFR 2.48(d) provide that you be furnished the following information in connection with information required by this application.

AUTHORITY: 30 U.S.C. 181 et seq., 351 et seq., 25 U.S.C. 396; 43 CFR 3160.

PRINCIPAL PURPOSE: The information is used to: (1) Evaluate, when appropriate, approve applications, and report completion of subsequent well operations, on a Federal or Indian lease; and (2) document for administrative use, information for the management, disposal and use of National Resource lands and resources, such as: (a) evaluating the equipment and procedures to be used during a proposed subsequent well operation and reviewing the completed well operations for compliance with the approved plan; (b) requesting and granting approval to perform those actions covered by 43 CFR 3162.3-2, 3162.3-3, and 3162.3-4; (c) reporting the beginning or resumption of production, as required by 43 CFR 3162.4-1(c) and (d) analyzing future applications to drill or modify operations in light of data obtained and methods used.

ROUTINE USES: Information from the record and/or the record will be transferred to appropriate Federal, State, local or foreign agencies, when relevant to civil, criminal or regulatory investigations or prosecutions in connection with congressional inquiries or to consumer reporting agencies to facilitate collection of debts owed the Government.

EFFECT OF NOT PROVIDING THE INFORMATION: Filing of this notice and report and disclosure of the information is mandatory for those subsequent well operations specified in 43 CFR 3162.3-2, 3162.3-3, 3162.3-4.

The Paperwork Reduction Act of 1995 requires us to inform you that:

BLM collects this information to evaluate proposed and/or completed subsequent well operations on Federal or Indian oil and gas leases.

Response to this request is mandatory.

BLM would like you to know that you do not have to respond to this or any other Federal agency sponsored information collection unless it displays a currently valid OMB control number.

BURDEN HOURS STATEMENT: Public reporting burden for this form is estimated to average 25 minutes per response, including the time for reviewing instructions, gathering and maintaining data, and completing and reviewing the form. Direct comments regarding the burden estimate or any other aspect of this form to U.S. Department of the Interior, Bureau of Land Management (1004-0137), Bureau Information Collection Clearance Officer (WO-630), 1849 C St., N.W., Mail Stop 401 LS, Washington D.C. 20240

Jicarilla B # 2

(API: 30-039-05725)

1590' FSL & 990' FEL

UL I, NESE, Sec. 31, T-25-N, R-05-W

Rio Arriba County, New Mexico

14-May-07, CI TBG PRESS 660#, CI ANN PRESS = 25#, CI SHORT STRING = 20#, RU SLU ; WIH W/ 2" JDC; SET DOWN AT 5845' ; WORKED FREE ; POH W/ DRAG; WORKED FREE ; POH RECOVERED 3 SLIP STOP; WIH W/ 1 80" IMPRESSION BLOCK TAGED AT 5891'; FELL THRU [PROBABLY SEAT NIPPLE; TAGGED BTM AT 6147'; STARTED OUT OF HOLE , STUCK AT 5876' ; SLACKED OFF & CAME UP EASILY APPEARED TO WORK THRU SPOT?, STRING FREE LOST WEIGHT : POH LOST TOOL STRING ; WIH W/ 2ND TOOL STRING W/ 2" TOOL JDC, NO TAG AT 5876' : TAGGED SN AT 5891' STARTED OUT SLOWING, SAW DRAG STOPPED AT 5876' WORKED DOWN , PU APPEARED TO WORK THRU, AGAIN LOST WEIGHT; POH NO TOOL STRING; NOTE: LOST BOTH TOOL STRING AT ROPE SOCKET, NEVER USED JAR I TBG APPEARED TO BE CUTTING LINE AT ROPE SOCKET, SET 3 SLIP STOP AT 5846' ; POH; RAN WEIGHT TO INSURE STOP SET, POH & RIG DOWN SLU ; AFTER RD OPEN 1" LINE TO FIBERGLASS ON BALL VALVE; BLEED LONG STRING PRESS FROM 660# TO 100# IN 30 MINUTES RU KEY RIG #64 : RU BLOW DOWN LINES; NOTE : CI LONG STRING PRESS = WENT F/ 100# BACK TO 300# IN + 1-1/2 HOURS; OPEN ANNULUS TO FLOW BACK TANK, BLEED TO SLIGHT BLOW; OPEN L STRING TO FLOW BACK TANK, BLEED DOWN TO SLIGHT GAS BLOW IN +30 MINUTES , AFTER ANOTHER 15 MINUTES, L. STING MAKING SMALL SLUGS OF OIL; LEFT OPEN FOR ANOTHER 30 MINUTES; WELL PSI 0# TO 10# WHEN HEADS HIT; UNLOADED + 1 BBL OIL, CWI;

15-May-07, CI LONG STRING PRESS = 400# , CI SHORT STRING PRESS = 20#, CI ANN PRESS = 20# ; OPEN LONG STRING TO F'BACK TANK ON PINCHED BALL VALVE, OPEN ANNULUS TO FLOW BACK TANK LONG STRING BLEED TO 0# MAKING SMALL HEADS OF OIL HEADING 0# TO 5#; CI LONG STRING , RU PUMP & LINE ; LONG STRING PSI 50# IN + 15 MINUTES, BULL HEAD 25 BW DOWN LONG STRING; WELL ON VACUMN ; ATTEMPTED TO SET BACK PRESS VALVE IN LONG STRING UNSUCCESSFUL , OPEN LONG STRING, WELL DEAD, DECISION WAS MADE TO SET A SLICK LINE DW PUMP THRU PLUG AT +/- 5840' RU SLU, HYDRAULICS FAILED , CWIFN ; CI LONG STRING PRESS 10#.

16-May-07, CI LONG STRING PRESS = 35#, CI SHORT STRING PRESS = 10#, CI ANN PRESS = 10#; BLEED OFF SHORT STRING TBG & ANNULUS; LEFT 35# ON LONG STRING; RU PHOENIX SLU ; WIH W/ DW 3 SLIP PUMP THRU PLUG , TAG FIL AT 4800' SET PLUG AT 5844' ; POH ; BLEED 35# OFF WELL, NO FLOW OR BLOW, ND WELL HEAD; INSTALLED CROSS OVER , ALSO INSTALLED A WSI F-NIPPLE W/ 2" BACK PRESS VALVE IN PLACE IN LONG STRING [NIPPLE IS SHORT 2-318" NIPPLE W/ COLLAR THAT HAS INSIDE THREADS TO TAKE BACK PRESS VALVE, NU BOP BOP TESTED & CHARTED AT YARD; RU RIG FLOOR POH LD 1" P C 1.7#, J-55, NU, 8RD P. TUBING ; LAID DOWN TOTAL OF-83 JTS; ND OFF SET SPOOL: REMOVED V RAMS & REPLACED W/ 2.375" OFF SET RAMS; WELL CLOSED IN: CROSS OVER NEEDED TO LIFT SHORT STRING IS 1-1/4" 10 RD INSTEAD OF 1-1/2" AS STAMPED ON WELL HEAD; **ROD VELARDE [CELL# 320-1943] W/ BLM JICARILLA** CEMENT CAME BY, TALKED ABOUT TIME LINE FOR BTM PLUG. TOLD HIM EARLIEST WILL BE FRIDAY BUT PROBABLY BE NEXT WEEK, I ASK HIM ABOUT LEAVING 1-1/2" TOOL STRING IN WELL BORE WE TRIED TO CALL A **STEVE MASON W/ BLM** ABOUT SITUATION HE WAS OUT OF OFFICE. ROD TOLD ME HE WOULD GET BACK TO ME ALSO RECIEVED A CALL FROM **BRICE W/ BLM**, CALLED HIM BACK . HE TOLD ME THAT HE HAD TALKED TO ROD.

17-May-07, CI ANN PRESS = 10#, BLEED OFF , PU ON LONG STRING STRING WEIGHT 27K, EST. STRING WEIGHT TO 2740' SHOULD BE 13K; WORKED ON PKR UNABLE TO RELEASE ; WORKED STRING WEIGHT UP TO 38K OVER [90%] STRETCH = 33' AT 38K OVER , ABLE TO WORK UP O TO 4 RDS INTO TUBING ; NO PKR MOVEMENT, LANDED TBG ON HANGER & CWI, OFF LOADED 210 JTS OF N-80 WS.

18-May-07, CI LONG STRING HAD 20#, CI ANN = 104, BLEED OFF BOTH RU WL SPECIALTIES RAN 90% FREE AT 2721' WHICH IS 10' ABOVE PKR BY ELM; CHECKED AT 2727' ELM 80% FREE; CHECKED UNDER PKR 100% STUCK; DECISION WAS MADE TO CUT 40' ABOVE PKR, WIH W/ CHEMICAL CUTTER, POSITIONED CUTTER TO CUT 2692' [8' ABOVE COLLAR], PU HANGER OUT BOWL, CLOSED SLIPS ON TBG ; PUMPED 12 BW AT 1-1/2 BPM, SLOWED PUMP TO IDLE IN LOW GEAR TO KEEP WATER MOVING; FIRED CUTTER ,TOOL FIRED , NO TBG REACTION , CHECKED FOR CUT W/ CL , NO GAP BUT DID HAVE KICK ; POH WORKED TBG TO 60K (35K OVER WEIGHT), CUT BROKE ; RD WL SPECIALTIES, LD TOP JT W/ DUAL HANGER, INSTALLED HANGER FROM WSI & LANDED, REMOVED 2.375" OFF SET PIPE RAMS TO 2.375" REGULAR RAMS ; INSTALLED STRIPPER RUBBER, POSITIONED CATWALK W/ V DOOR SKID, & PIPE RACKS. LD A TOTAL OF 84 FULL JTS & --20' CUT JT. OF 2.375" TBG MOVED 84 FULL JTS & 1 CUT PIECE TO GROUND RACKS; MOVED 116 JTS. TO RACK, TALLIED LAYER, DID NOT TALLY THE 94 JTS ON OTHER RACK, TOTAL OF 210 JTS OF RENTAL TBG WIH W/ 4-11/16" OVER SHOT, CROSSOVER, FLOAT SUB, BUMPER SUB, CROSSOVER, ON 2.375" N-80 TBG ; STOPPED W/ BTM OF OVERSHOT AT 1290' KBC PM

21-May-07, SHUT DOWN FOR DAY, ROADS TOO MUDDY TO TRAVEL SAFELY.

22-May-07, ARRIVE ON LOC FOUND DOOR GASKET ON PIPE RAMS LEAKING, BLEED PRESS OFF WELL, CHANGE DOOR GASKET & TEST BOP'S OPEN WELL INSTALL HANGER & HANG OFF TBG OPEN DOOR ON BOP , DOOR GASKET WAS CUT, REPLACE SAME, CLOSE BOP DOOR TEST PIPE, BLIND RAMS & ALL VALVES TO 250# LOW & 1500# HIGH FOR 5 MIN EACH TEST W/HIGH TECH & CHART SAME PU & REMOVE HANGER PU 2-3/8" 4 7# N-80 8RD TBG , GIH TO 2688' PM LATCH ONTO TBG AT 2688' PM ATTEMPT TO RELEASE PKR, MOVED PKR UP HOLE APPROX 3' UNABLE TO MOVE ANY FURTHER MAX PULLED ON TBG 70000# RELEASE OVERSHOT POOH W/5 JTS TO 2530'

23-May-07, OPEN WELL CHECK PRESS 220#, BLEED DOWN WELL TO FLOWBACK TANK POOH W/ OVERSHOT & LD SAME MU 5-1/2" WATERMELON MILL, X/O & TBG FLOAT SUB W/ FLOAT, TIH W/ TBG TO 2550' ROTATE & WORK WATERMELON MILL F/ 2550' TO 2575' POOH W/ WATERMELON MILL & LD SAME TIH W/ GUIDE, HIGH PRESSURE PACKOFF, OS BOWL, EXT, TOP SUB & X/O TOT 6 94 SPACE OUT W/ 9000# DOWN ON FISH & TBG COLLAR 6" BELOW PIPE RAMS RIG UP WL, GIH W/ 1 8" GAUGE TO 2850' FOUND PKR AT 2724' WLM TOP OF FISH 2785' WLM, POOH W/ GR, MU 1-11/16" JET CUTTER GIH (PUMPING FLUID DOWN TBG WHILE TIH W/ CUTTER PUMPED TOT 20 BBLs) CUT TBG AT 2804' WLM PRESSURE ON TBG POOH W/ WL, RIG OFF WL CHECK PRESS ON TBG 400 PSI. 0 PSI ON CSG, RIG UP & BLEED TBG PRESS DOWN TO A SLIGHT BLOW, CLOSE WELL IN & SECURE FOR NIGHT. TALKED TO **BRICE HAMMOND W/ BLM**, HE WILL BE ON LOC 5/24/07.

Jicarilla B # 2

(API: 30-039-05725)

1590' FSL & 990' FEL

UL I, NESE, Sec. 31, T-25-N, R-05-W

Rio Arriba County, New Mexico

24-May-07, RIG UP HALLIBURTON TEST LINES TO 1800#, PUMP 10 BBLS FW,MIX & PUMP 32 BBLS 13.5(141 SKS) PPG, 50% CLASS G, 50% POZMIX, .154 LB/BBL LCM YLD 1 27 WATER 5.66 GALS PER SK WELL PRESSURED UP TO 522# CLEAN LINES, TIE INTO TBG PUMP 1.4 BBLS FW PRESSURED UP TO 1062# APPROX 9-1/2 BBLS CMT LEFT IN TBG RELEASE PRESS RIG OFF HALLIBURTON PULL PACKOFF OFF TBG DUMP APPROX 9-1/2 BBLS CMT ON TOP OF FISH AT 2683' POOH W/ OVERSHOT PACKOFF (APPROX TOP OF CEMENT 2283') & LD SAME. WAIT ON CMT ABOVE FISH TO SET MU TBG COLLAR ON BTM OF TBG TIH TO 1800' LOAD CSG & TBG W/ 41 BBLS KCL WATER RIG UP HES ATTEMPT TO PRESS TEST CMT TO 500# GIH SLOW FROM 1800 TO 2641' PIPE APPEARED TO BE IN CMT RIG UP & REVERSE CIRC REVERSE OUT APPROX 2 BBLS CMT. LEAVING APPROX 5.2 BBLS IN CSG & APPROX 2.3 BBLS IN FORMATION RIG UP HES PUMP 5 BBLS FW WATER MIX & PUMP BALANCED PLUG W/ 13 3 BBLS CMT WT 15 6, YLD 1.18 WATER 5.20 DISPLACE W/ 6 3 BBLS WATER, RIG OFF HES TOP OF CEMENT APPROX 1892' POOH W/ 15 STDS TBG SECURE WELL FOR NIGHT **BRICE HAMMOND W/ JICARILLA BLM** ON LOC TO WITNESS ALL PLUGS

25-May-07, RIG UP HES EST CIRC ,TEST CASING & CEMENT PLUG PRESS UP TO 525# WAIT 15 MIN PRESS DROPPED TO 487# (LOST 384) **BRICE HAMMOND W/ BLM** WITNESSED TEST, RELEASE PRESS GIH & TAG TOP OF CEMENT AT 1970' POOH LD TBG GIH W/ 23 JTS TO 735' MIX & SPOT 5 BBL BALANCED PLUG 735' TO 535' YLD 1.18 WT 15.6 WATER 5.2 POOH LD ALL TBG RIG UP SCHLUMBERGER GIH PER W SHOTS 369' POOH RIG HES ON 5-1/2" CSG & RIG UP TO TAKE RETURNS ON SURFACE CSG PUMP WATER DOWN 5-1/2" TOOK 18 BBLS TO GET RETURNS TO SURFACE, CIRC TILL RETURNS CLEAN RD SCHLUMBERGER MIX & PUMP 292 SKS (36 BBLS) CMT WT 15 6, YLD 1 18 WATER 5.2 DOWN 5-1/2" & UP 5-1/2" x SUFACE PIPE ANNULUS, BARELY GOT CMT TO SURFACE ON SURFACE PIPE, **BRICE HAMMOND W/ BLM** ON LOC TO WITNESS ALL PLUGS RD HALLIBURTON RD RIG FLOOR & EQUIP, N/D BOP'S RIGGING DOWN PUMP LINES & FLOWBACK LINES

28-May-07, LOAD OUT 2 3/8" RENTAL TBG & EQUIP, RIG DOWN RIG, LOAD OUT DC'S, WASHPIPE & TBG PULLED FROM WELL EMPTY OUT EARTH PIT TO HAVE ROOM TO CLEAN OUT FLOWBACK TANK & RIG TANK, EMPTY OUT EARTH PIT, MONITOR WELL.

12-Jul-07, DIG OUT CELLAR, CUT OFF WELLHEAD & CASING, WELDED ON PLATE, CUT ANCHORS, INSTALL P&A MARKER, CLEAR LOCATION. WELL ABANDONED. (See attached Wellbore Diagram)

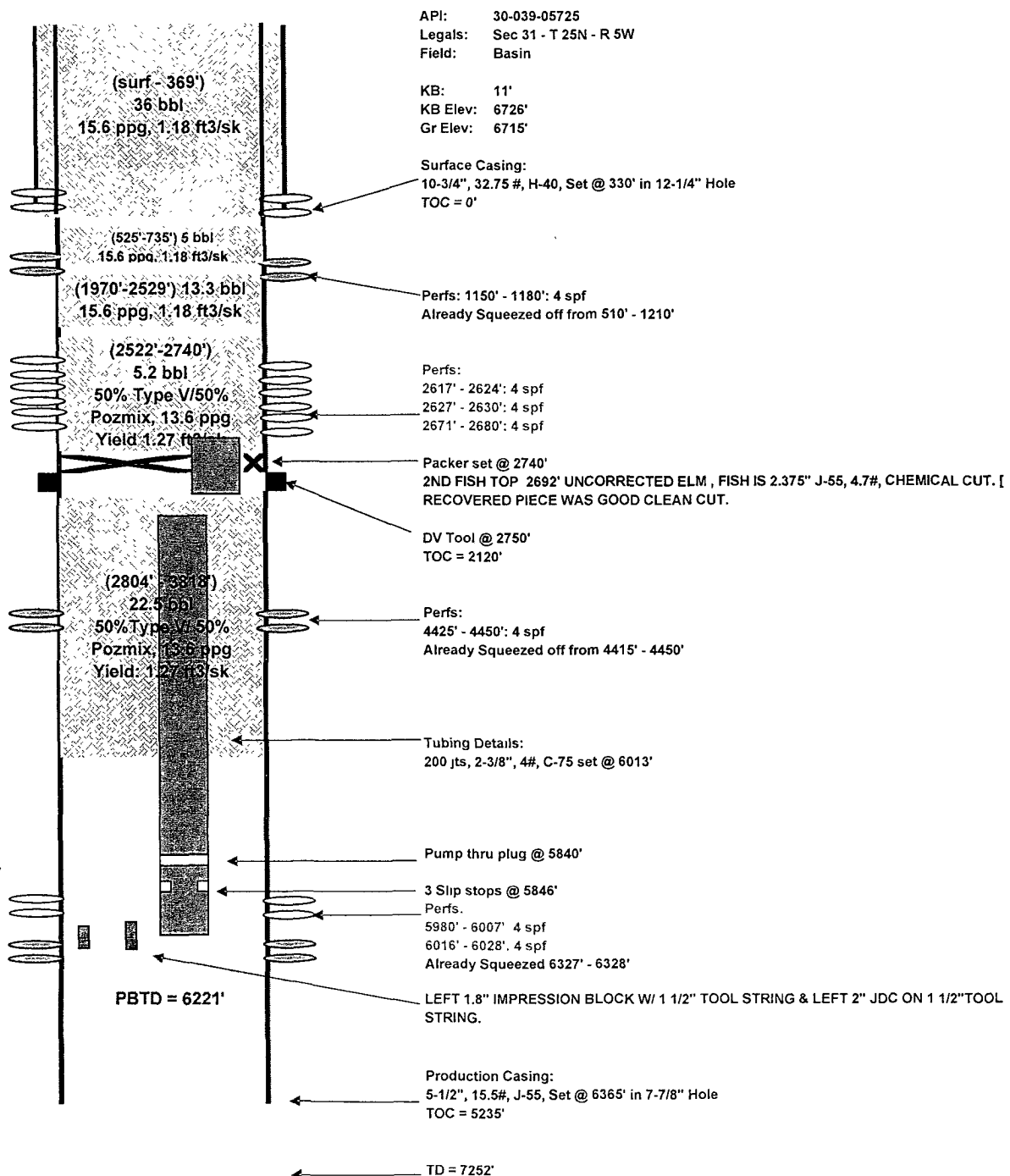


Jicarilla B #2

API: 30-039-05725

Rio Arriba County, New Mexico

Current Schematic 5/29/2007



Prepared by: James Carpenter
Date: 11/30/2005

Revised by: Jesus Capo
Date: 5/29/2007