

UNITED STATES  
DEPARTMENT OF THE INTERIOR  
BUREAU OF LAND MANAGEMENT

FORM APPROVED  
OMB No. 1004-0135  
Expires July 31, 1996

**SUNDRY NOTICES AND REPORTS ON WELLS**

**Do not use this form for proposals to drill or reenter an abandoned well. Use Form 3160-3 (APD) for such proposals.**

**SUBMIT IN TRIPLICATE - Other instructions on reverse side**

1. Type of Well

☒ Oil Well ☐ Gas Well ☐ Other

2. Name of Operator

Elm Ridge Exploration CO LLC

3a. Address

PO Box 156, Bloomfield, NM 87413

3b. Phone No. (include area code)

505-632-3476

4. Location of Well (Footage, Sec., T., R., M., or Survey Description)

1781' FNL X 660' FEL

Sec. 9-T25N-R12W

5. Lease Serial No.

NM 036254-A

6. If Indian, Allottee or Tribe Name

11 AM 10: 56

7. If Unit or CA/Agreement, Name and/or N

Central Bisti Unit

8. Well Name and No.

Central Bisti Unit #23

9. API Well No.

30-045-05484

10. Field and Pool, or Exploratory Area

Bisti Lower Gallup

11. County or Parish, State

San Juan County, NM

12. CHECK APPROPRIATE BOX(ES) TO INDICATE NATURE OF NOTICE, REPORT, OR OTHER DATA

TYPE OF SUBMISSION	TYPE OF ACTION
<input checked="" type="checkbox"/> Notice of Intent	<input type="checkbox"/> Acidize <input type="checkbox"/> Deepen <input type="checkbox"/> Production (Start/Resume) <input type="checkbox"/> Water Shut-Off
<input type="checkbox"/> Subsequent Report	<input type="checkbox"/> Alter Casing <input type="checkbox"/> Fracture Treat <input type="checkbox"/> Reclamation <input type="checkbox"/> Well Integrity
<input type="checkbox"/> Final Abandonment Notice	<input type="checkbox"/> Casing Repair <input type="checkbox"/> New Construction <input type="checkbox"/> Recomplete <input type="checkbox"/> Other
	<input type="checkbox"/> Change Plans <input checked="" type="checkbox"/> Plug and Abandon <input type="checkbox"/> Temporarily Abandon
	<input type="checkbox"/> Convert to Injection <input type="checkbox"/> Plug Back <input type="checkbox"/> Water Disposal

13 Describe Proposed or Completed Operations (clearly state all pertinent details, including estimated starting date of any proposed work and approximate duration thereof. If the proposal is to deepen directionally or recompleat horizontally, give subsurface locations and measured and true vertical depths of all pertinent markers and zones. Attach the Bond under which the work will be performed or provide the Bond No. on file with BLM/BIA. Required subsequent reports shall be filed within 30 days Following completion of the involved operations. If the operation results in a multiple completion or recompletion in a new interval, a Form 3160-4 shall be filed once Testing has been completed. Final Abandonment Notices shall be filed only after all requirements, including reclamation, have been completed, and the operator has determined that the site is ready for final inspection.)

This well is incapable of production. Elm Ridge Exploration CO LLC request approval to plug and abandon this well according to the attached procedure.

RCVD JUL 19'07

OIL CONS. DIV.

DIST. 3

14. I hereby certify that the foregoing is true and correct

Name (Printed/Typed)

Amy Mackey

Title

Administrative Manager

Signature

Date

July 10, 2007

THIS SPACE FOR FEDERAL OR STATE USE

Approved by

Original Signed: Stephen Mason

Title

Date

JUL 18 2007

Conditions of approval, if any, are attached. Approval of this notice does not warrant or certify that the applicant holds legal or equitable title to those rights in the subject lease which would entitle the applicant to conduct operations thereon.

Office

Title 18 U.S.C. Section 1001, makes it a crime for any person knowingly and willfully to make to any department or agency of the United States any false, fictitious or fraudulent statements or representations as to any matter within its jurisdiction.

(Instructions on reverse)

NMOC

8

### Plugging Program for Central Bisti Unit #23:

Plug 1: Set retainer at 4678'. Squeeze below retainer with 4 sacks. Spot ~~4~~ <sup>Cement</sup> sacks on top of retainer to cover across perforations and top of Gallup. ~~to 4566' + 50' excess~~

Plug 2: Perf 4 holes at 1928'. Set retainer at 1878'. Squeeze below retainer with 43 sx. Spot ~~8~~ <sup>4</sup> sx on top of retainer to cover 100' across Cliff House top, inside and outside casing.

Plug 3: Perf 4 holes at 1500'. Set retainer at 1450'. Squeeze below retainer with 43 sx. Spot ~~4~~ <sup>4</sup> sx on top of retainer to cover 100' across Chacra top, inside and outside casing (as required by NMOCD).

Plug 4: Perf 4 holes at ~~1140'~~ <sup>1212'</sup>. Set retainer at ~~1090'~~ <sup>1090'</sup>. Squeeze below retainer with 43 sx. Spot ~~8~~ <sup>4</sup> sx on top of retainer to cover 100' across Pictured Cliffs top, inside and outside casing.

→ Plug 870'-770' inside & outside 4 1/2" casing to cover Fruitland top.

Plug 5: Perf 4 holes at 159'. Tie onto 4-1/2" casing and pump 55 sx, or sufficient volume to bring cement to surface inside and outside 4-1/2" casing.

Remediate location per BLM Conditions of Approval.

Note: All volumes include excess.

# Elm Ridge Resources

## Pertinent Data Sheet

**Well Name:** Central Bisti Unit #23  
**Footage:** 1781' FNL and 660' FEL  
**Location:** Section 9, T25N, R12W  
**County:** San Juan County, NM  
**API#:** 30-045-05484

**Field:** Bisti Lower Gallup

**Elevation:** 6222' KB

**TD:** 4900' KB  
**PBTD:** 4895' KB

**Completed:** 12/19/57

### Casing Record:

Hole Size	Casing Size	Wt.	Grade	Depth Set	Cement
12-1/4"	8-5/8"	24#	J-55	109'	150 sx (Circulated to Surface)
7-7/8"	4-1/2"	9.5#	N/A	4895'	150 sx TOC 4351' (Calc.)

**Tubing Record:** 1 jt. 2-3/8" tbg, 4'x2-3/8" PS, SN, 4 jts 2-3/8" tbg, TAC, 149 jts 2-3/8" tbg set at 4844'. (2/20/2006)

**Rod Record:** 2"x1-1/2"x16' RWAC pump. 191-3/4" rods, 4', 4', 2' ponies, and polished rod.

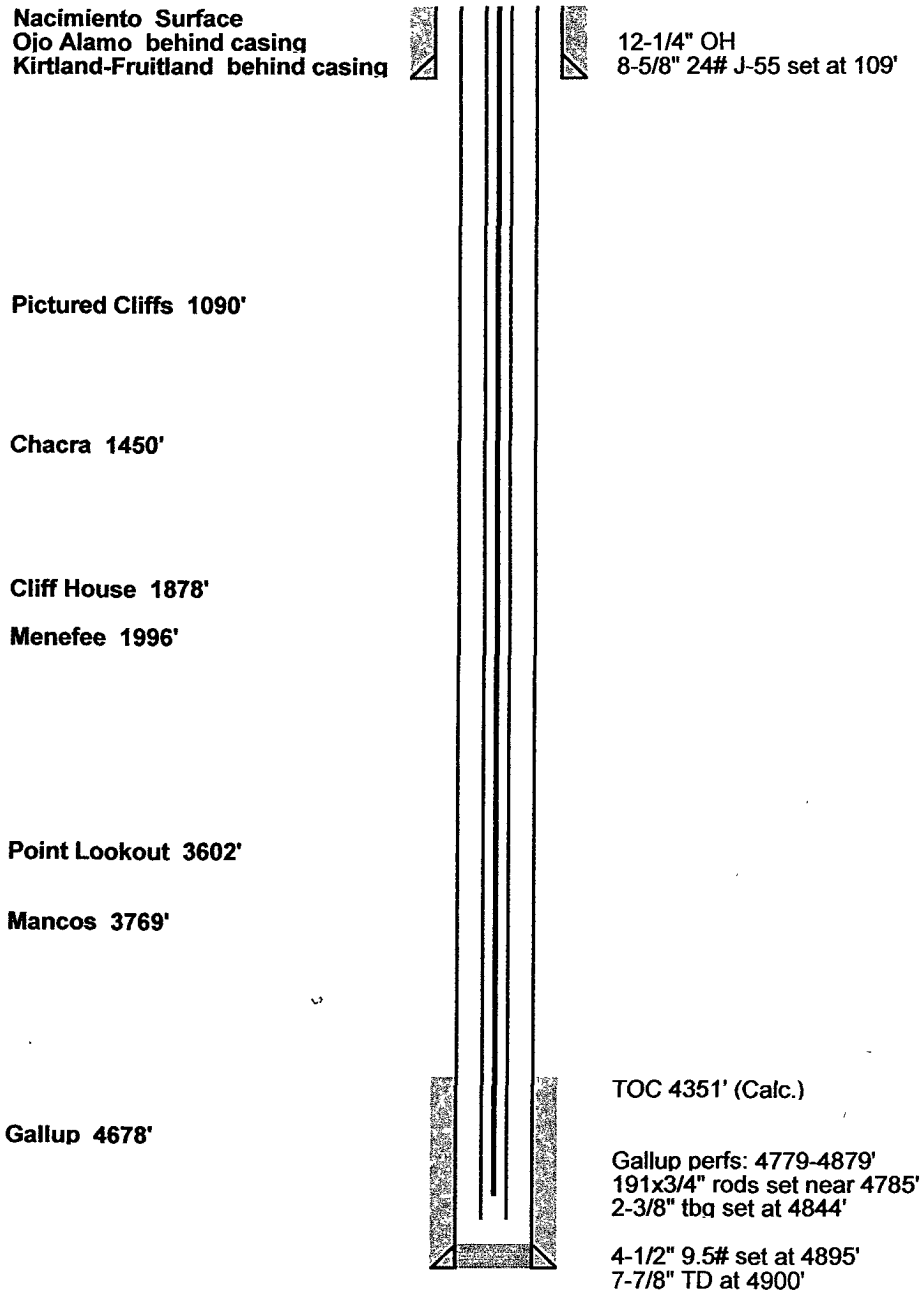
### Formation Tops:

Nacimiento	Surface
Ojo Alamo	Behind surf. csg
Kirtland-Fruitland	Behind surf. csg
Pictured Cliffs	1090'
Lewis	1312'
Chacra	1450'
Cliff House	1878'
Menefee	1996'
Point Lookout	3602'
Mancos	3769'
Gallup	4678'

**Perforations:** Gallup: 4779-4879'

Wellbore Diagram  
Central Bisti Unit #23  
NE/4 Sec. 9, T25N, R12W  
San Juan County Co., NM  
API #30-045-05484

Before



Wellbore Diagram  
 Central Bisti Unit #23  
 NE/4 Sec. 9, T25N, R12W  
 San Juan County Co., NM  
 API #30-045-05484

After

Nacimiento Surface  
 Ojo Alamo behind casing  
 Kirtland-Fruitland behind casing



12-1/4" OH  
 8-5/8" 24# J-55 set at 109'

Plug 5: Perf 4 holes at 159'. Tie onto 4-1/2" casing. Pump 55 sx, or sufficient volume to bring cement to surface inside and outside.

Pictured Cliffs 1090'



Plug 4: Perf 4 holes at 1140'. Set retainer at 1090'. Squeeze below retainer with 43 sx. Spot 4 sx on top of retainer.

Chacra 1450'



Plug 3: Perf 4 holes at 1500'. Set retainer at 1450'. Squeeze below retainer with 43 sx. Spot 4 sx on top of retainer.

Cliff House 1878'



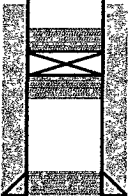
Plug 2: Perf 4 holes at 1928'. Set retainer at 1878'. Squeeze below retainer with 43 sx. Spot 4 sx on top of retainer.

Menefee 1996'

Point Lookout 3602'

Mancos 3769'

Gallup 4678'



TOC 4351' (Calc.)  
 Plug 1: Set retainer at 4678'. Squeeze below retainer with 4 sx, and spot 4 sx on top of retainer. Gallup perfs: 4779-4879'

4-1/2" 9.5# set at 4895'  
 7-7/8" TD at 4900'

**UNITED STATES DEPARTMENT OF THE INTERIOR  
BUREAU OF LAND MANAGEMENT  
FARMINGTON DISTRICT OFFICE  
1235 LA PLATA HIGHWAY  
FARMINGTON, NEW MEXICO 87401**

Attachment to notice of  
Intention to Abandon:

Re: Permanent Abandonment  
Well: 23 Central Bisti Unit

**CONDITIONS OF APPROVAL**

1. Plugging operations authorized are subject to the attached "General Requirements for Permanent Abandonment of Wells on Federal and Indian Lease."
2. Farmington Office is to be notified at least 24 hours before the plugging operations commence (505) 599-8907.
3. The following modifications to your plugging program are to be made:
  - a) Bring the top of the Gallup plug to 4566'
  - b) Place the Pictured Cliffs plug from 1212' – 1112' inside and outside the 4 ½" casing.
  - c) Place the Fruitland plug from 870' - 770' inside and outside the 4 ½" casing.

You are also required to place cement excesses per 4.4 of the attached General Requirements.

Office Hours: 7:45 a.m. to 4:30 p.m.