

UNITED STATES
DEPARTMENT OF THE INTERIOR
BUREAU OF LAND MANAGEMENT

RECEIVED

APPLICATION FOR PERMIT TO DRILL, DEEPEN, OR PLUG BACK

704 FEB 26 PM 3:10

1a. Type of Work DRILL	5. Lease Number NMSF-080180-7A Unit Reporting Number
1b. Type of Well GAS	6. If Indian, All. or Tribe
2. Operator BURLINGTON RESOURCES Oil & Gas Company	7. Unit Agreement Name San Juan 30-6 Unit
3. Address & Phone No. of Operator PO Box 4289, Farmington, NM 87499 (505) 326-9700	8. Farm or Lease Name San Juan 30-6 Unit 9. Well Number #441S
4. Location of Well 1890' FSL, 1210' FEL Latitude 36° 46.0240'N, Longitude 107° 29.9330'W	10. Field, Pool, Wildcat Basin Fruitland Coal 11. Sec., Twn, Rge, Mer. (NMPM) 1 Sec. 31, T30N, R06W API # 30-045- 039 27643
14. Distance in Miles from Nearest Town 24.5 miles to Blanco, NM Post Office	12. County Rio Arriba 13. State NM
15. Distance from Proposed Location to Nearest Property or Lease Line 1210'	
16. Acres in Lease	17. Acres Assigned to Well 320 E/2
18. Distance from Proposed Location to Nearest Well, Drlg, Compl, or Applied for on this Lease 22'	
19. Proposed Depth 3808'	20. Rotary or Cable Tools Rotary
21. Elevations (DF, FT, GR, Etc.) 6839' GR	22. Approx. Date Work will Start RCVD JUL26'07
23. Proposed Casing and Cementing Program See Operations Plan attached	OIL CONS. DIV. DIST. 3
24. Authorized by: <u>Doni Clark</u> Regulatory Specialist	<u>12-23-03</u> Date

PERMIT NO.

APPROVAL DATE

APPROVED BY

TITLE

DATE 7/24/07

Archaeological Report attached
Threatened and Endangered Species Report attached

NOTE: This format is issued in lieu of U.S. BLM Form 3160-3

Title 18 U.S.C. Section 1001, makes it a crime for any person knowingly and willfully to make to any department or agency of the United States any false, fictitious or fraudulent statements or presentations as to any matter within its jurisdiction.

HPA OK
NOTIFY AZTEC OCD 24 HRS.
PRIOR TO CASING & CEMENT

subject to technical and procedural review pursuant to 43 CFR 3165.3 and appeal pursuant to 43 CFR 3165.4

DRILLING OPERATIONS AUTHORIZED ARE
SUBJECT TO COMPLIANCE WITH ATTACHED
"GENERAL REQUIREMENTS".

8-01-07
BH

NMOCD

Obtain a pit permit from NMOCD
prior to constructing location

DISTRICT I
1625 N. French Dr., Hobbs, N.M. 88240

State of New Mexico
Energy, Minerals & Natural Resources Department

Form C-102
Revised August 15, 2000

DISTRICT II
811 South First, Artesia, N.M. 88210

DISTRICT III
1000 Rio Brazos Rd., Aztec, N.M. 87410

DISTRICT IV
2040 South Pacheco, Santa Fe, NM 87505

OIL CONSERVATION DIVISION

2040 South Pacheco
Santa Fe, NM 87505

Submit to Appropriate District Office
State Lease - 4 Copies
Fee Lease - 3 Copies

☐ AMENDED REPORT

WELL LOCATION AND ACREAGE DEDICATION PLAT

¹ API Number 30-039- 27643	² Pool Code 71629	³ Pool Name Basin Fruitland Coal
⁴ Property Code 7469	⁵ Property Name SAN JUAN 30-6 UNIT	⁶ Well Number 441S
⁷ OGRID No. 14538	⁸ Operator Name BURLINGTON RESOURCES OIL AND GAS COMPANY LP	⁹ Elevation 6839'

¹⁰ Surface Location

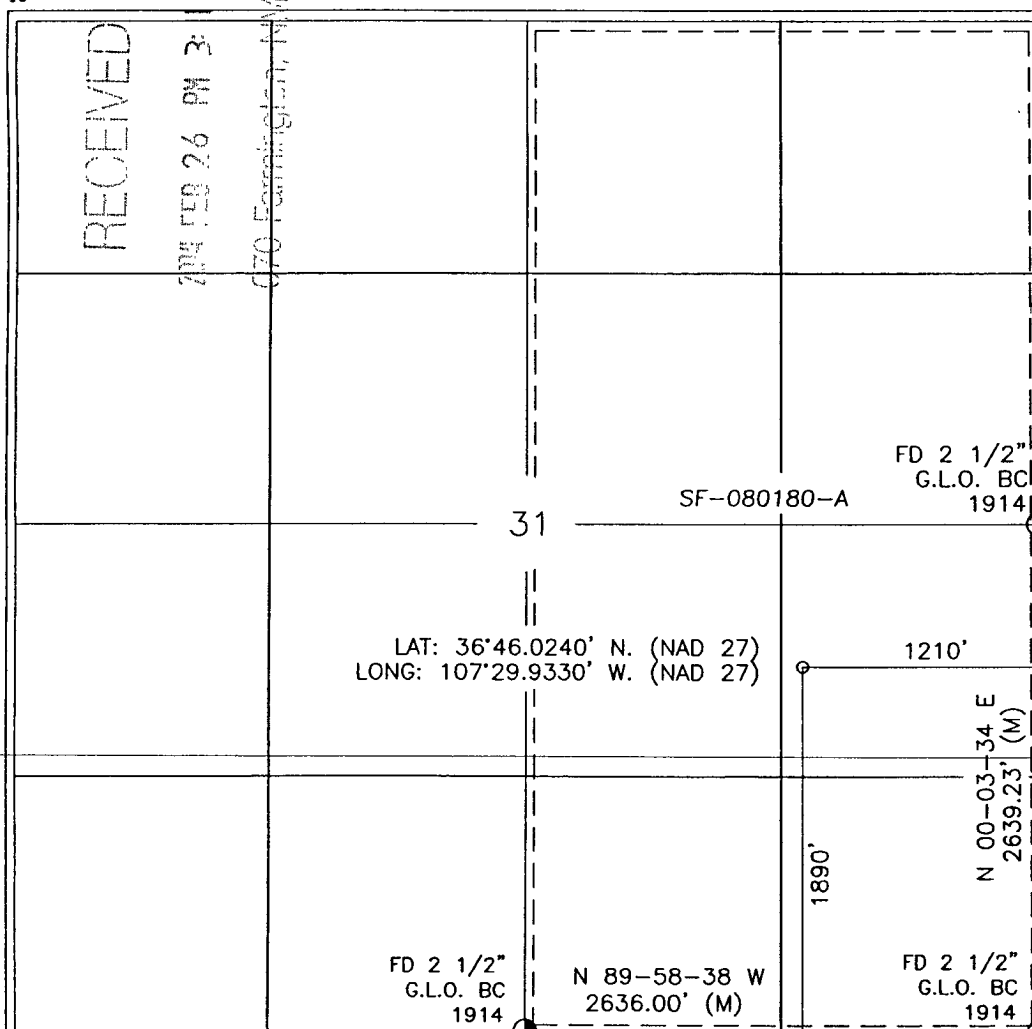
UL or lot no.	Section	Township	Range	Lot Idn	Feet from the	North/South line	Feet from the	East/West line	County
I	31	30-N	6-W		1890'	SOUTH	1210'	EAST	RIO ARRIBA

¹¹ Bottom Hole Location If Different From Surface

UL or lot no.	Section	Township	Range	Lot Idn	Feet from the	North/South line	Feet from the	East/West line	County
¹² Dedicated Acres FTC E/320			¹³ Joint or Infill		¹⁴ Consolidation Code		¹⁵ Order No.		

NO ALLOWABLE WILL BE ASSIGNED TO THIS COMPLETION UNTIL ALL INTERESTS HAVE BEEN CONSOLIDATED
OR A NON-STANDARD UNIT HAS BEEN APPROVED BY THE DIVISION

16



17 OPERATOR CERTIFICATION

I hereby certify that the information contained herein is true and complete to the best of my knowledge and belief

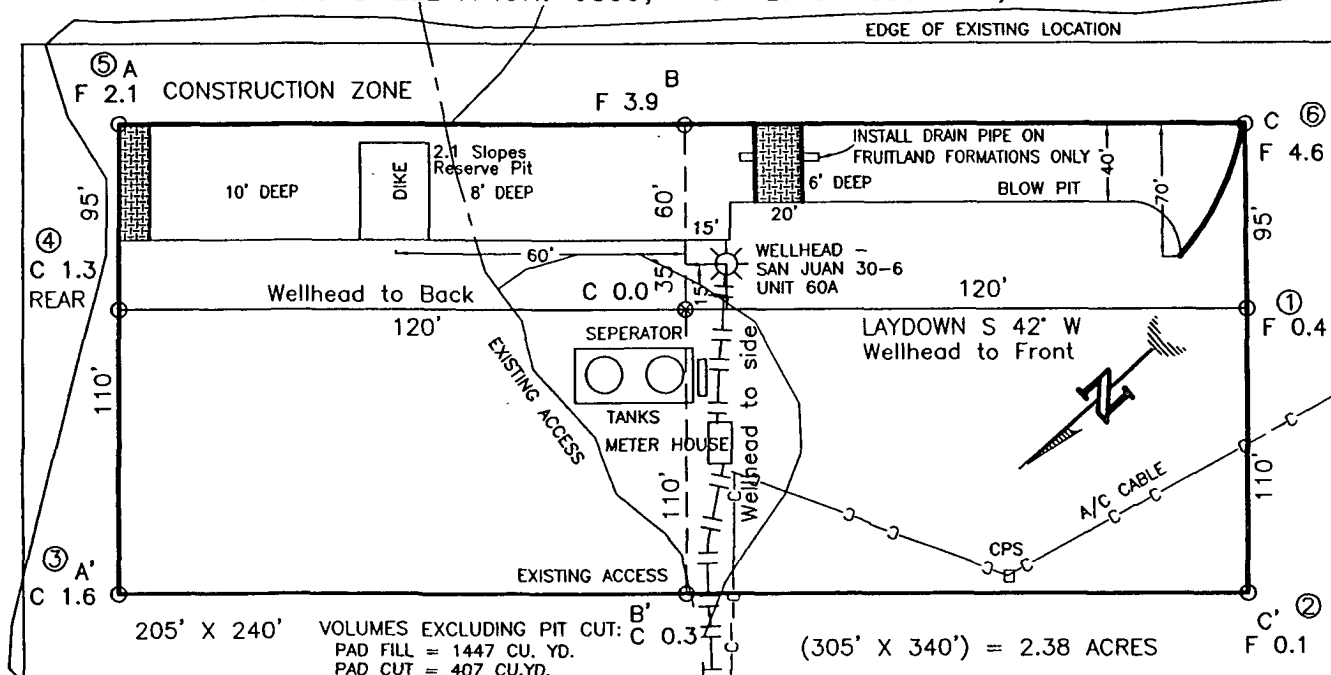
Joni Clark
Signature
Joni Clark
Printed Name
Regulatory Specialist
Title
December 23, 2003
Date

18 SURVEYOR CERTIFICATION

I hereby certify that the well location shown on this plat was plotted from field notes of actual surveys made by me or under my supervision, and that the same is true and correct to the best of my belief.

DAVID A. JOHNSON
NEW MEXICO
REGISTERED PROFESSIONAL SURVEYOR
14827
Date of Survey
Signature and Seal of Professional Surveyor
14827
Certificate Number

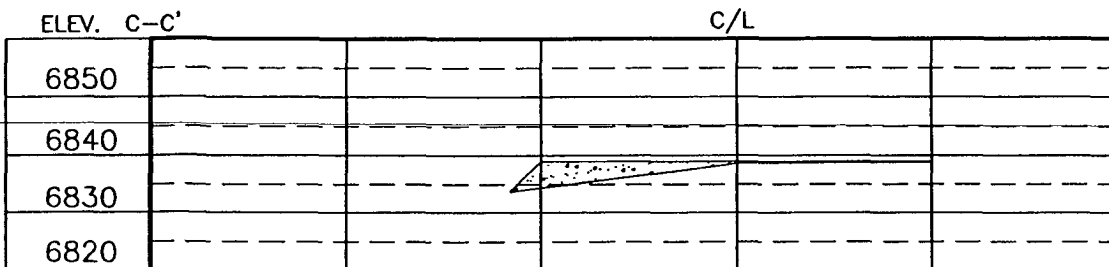
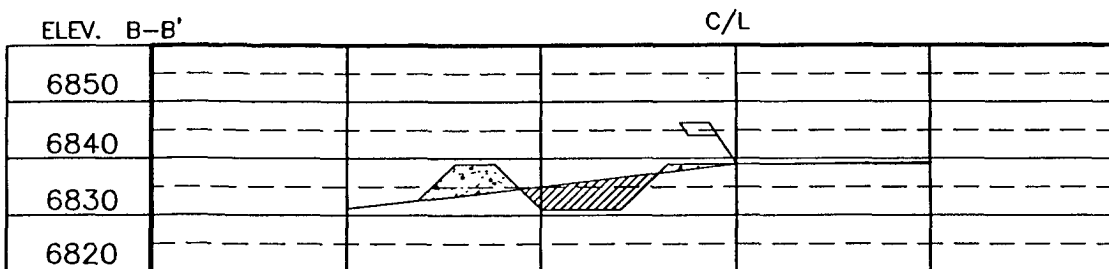
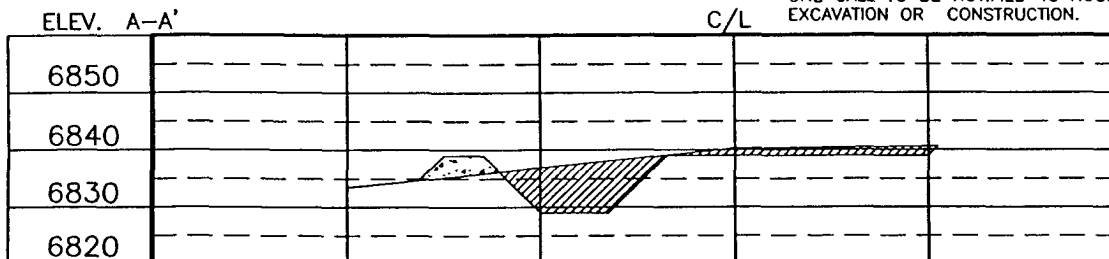
BURLINGTON RESOURCES OIL & GAS COMPANY LP
 SAN JUAN 30-6 UNIT No. 441S, 1890 FSL 1210 FEL
 SECTION 31, T-30-N, R-6-W, N.M.P.M., RIO ARriba COUNTY, NEW MEXICO
 GROUND ELEVATION: 6839, DATE: OCTOBER 31, 2003



RESERVE PIT DIKE: TO BE 8' ABOVE DEEP SIDE (OVERFLOW - 3' WIDE AND 1' ABOVE SHALLOW SIDE).
 BLOW PIT: OVERFLOW PIPE HALFWAY BETWEEN TOP AND BOTTOM AND TO EXTEND OVER PLASTIC LINER AND INTO BLOW PIT.

NOTE:

DAGGETT ENTERPRISES, INC. IS NOT LIABLE FOR UNDERGROUND UTILITIES OR PIPELINES. NEW MEXICO ONE CALL TO BE NOTIFIED 48 HOURS PRIOR TO EXCAVATION OR CONSTRUCTION.



NOTE: CONTRACTOR SHOULD CALL ONE-CALL FOR LOCATION OF ANY MARKED OR UNMARKED BURIED PIPELINES OR CABLES ON WELL PAD AND OR ACCESS ROAD AT LEAST TWO (2) WORKING DAYS PRIOR TO CONSTRUCTION.

DRAWN BY: A.G.

ROW#: BR502

CADFILE: BR502CF8

DATE: 11/6/03

Daggett Enterprises, Inc.
 Surveying and Oil Field Services
 P. O. Box 15068 Farmington, NM 87401
 Phone (505) 326-1772 Fax (505) 326-6019

OPERATIONS PLAN

Well Name: San Juan 30-6 Unit # 441S
Location: 1890' FSL, 1210' FEL Section 31, T-30-N, R-06-W
Latitude 36° 49.0240' N, Longitude 107° 29.9330' W
Rio Arriba, NM
Formation: Basin Fruitland Coal
Elevation: 6839' GR

Formation:	Top	Bottom	Contents
Surface	San Jose	2850'	
Ojo Alamo	2850'	2972'	aquifer
Kirtland	2972'	3310'	
Fruitland	3310'	3541'	
Intermediate TD	3491'		
Fruitland Coal	3541'	3723'	gas
B/Basal Coal	3723'	3750'	gas
Pictured Cliffs	3750'		
Total Depth	3808'		

Logging Program: GR/Density from 7" to 3808'

Mudlog: from 7" to 3808'

Coring Program: none

Mud Program:

<u>Interval</u>	<u>Type</u>	<u>Weight</u>	<u>Vis.</u>	<u>Fluid Loss</u>
0- 120'	Spud Mud/Air/Air Mist	8.4-9.0	40-50	no control
120-3491'	Non-dispersed	8.4-9.0	30-60	no control
3491-3808'	Air/Mist			

Casing Program (as listed, the equivalent, or better):

<u>Hole Size</u>	<u>Depth Interval</u>	<u>Csg. Size</u>	<u>Wt.</u>	<u>Grade</u>
12 1/4"	0' - 120'	9 5/8"	32.3#	H-40
8 3/4"	0' - 3491'	7"	20.0#	J-55
6 1/4"	3491' - 3808'	open hole		

Alternate Casing Program (as listed, the equivalent, or better):

<u>Hole Size</u>	<u>Depth Interval</u>	<u>Csg. Size</u>	<u>Wt.</u>	<u>Grade</u>
12 1/4"	0' - 120'	9 5/8"	32.3#	H-40
8 3/4"	0' - 3491'	7"	20.0#	J-55
6 1/4"	3451' - 3808'	5 1/2"	15.5#	J-55

Tubing Program:

0' - 3808' 2 3/8" 4.7# J-55

Float Equipment: 9 5/8" surface casing - saw tooth guide shoe. Centralizers will be run in accordance with Onshore Order #2.

7" intermediate casing - guide shoe and self-fill float collar. Standard centralizers run every other joint above shoe. Two turbolizing type centralizers - one below and one into the base of the Ojo Alamo @ 2972'. Standard centralizers thereafter every fourth joint up to the base of the surface pipe.

Wellhead Equipment: 9 5/8" x 7" x 2 3/8" x 11" 2000 psi xmas tree assembly.

Cementing:

9 5/8" surface casing -
Pre-Set Drilled Cement with 23 sx Type I, II cement with 20% flyash mixed at 14.5 ppg, 1.61 cu ft per sack yield. (37 cu ft of slurry, bring cement to surface) Wait on cement for 24 hours for pre-set holes before pressure testing or drilling out from under surface.

Conventionally Drilled

Cement with 88 sx Type III cement with 0.25 pps Celloflake, 3% CaCl. (113 cu ft of slurry, 200% excess, bring cement to surface) Wait on cement for 8 hrs for conventionally set holes before pressure tessting or drilling out from under surface.

WOC until cement establishes 250 psi compressive strength prior to NU of BOPE.

7" intermediate casing - lead w/268 sacks Premium Lite with 3% calcium chloride, 5 pps LCM-1, and 1/4#/sack flocele, 0.4% FL-52, & 0.4% SMS. Tail with 90 sacks Type III cmt with 1% calcium chloride, 1/4#/sack flocele and 0.2% FL-52 (695 cu.ft., 50% excess to circulate to surface).

5 1/2" liner - will not be cemented if run.

Note: If open hole logs are run, cement volumes will be based on 25% excess over caliper volumes.

BOP and tests:

Surface to intermediate TD - 11" 2000 psi (minimum) double gate BOP stack (Reference Figure #1). Prior to drilling out surface casing, test rams to 600#/30 min.

Intermediate TD to Total Depth - 7 1/6" 2000 psi (minimum) double gate BOP stack (Reference Figure #2). Prior to drilling out intermediate casing, test blind rams and casing to 1500 psi for 30 minutes; all pipe rams and casing to 1500 psi for 30 minutes each.

From surface to TD - choke manifold (Reference Figure #3).

Pipe rams will be actuated at least once each day and blind rams actuated once each trip to test proper functioning. An upper kelly cock valve with handle and drill string safety valves to fit each drill string will be maintained and available on the rig floor.

Additional information:

- * The Fruitland Coal formation will be completed.
- * Anticipated pore pressure for the Fruitland is less than 500 psi.
- * This gas is dedicated.
- * All of Section 7 is dedicated to the Fruitland Coal.

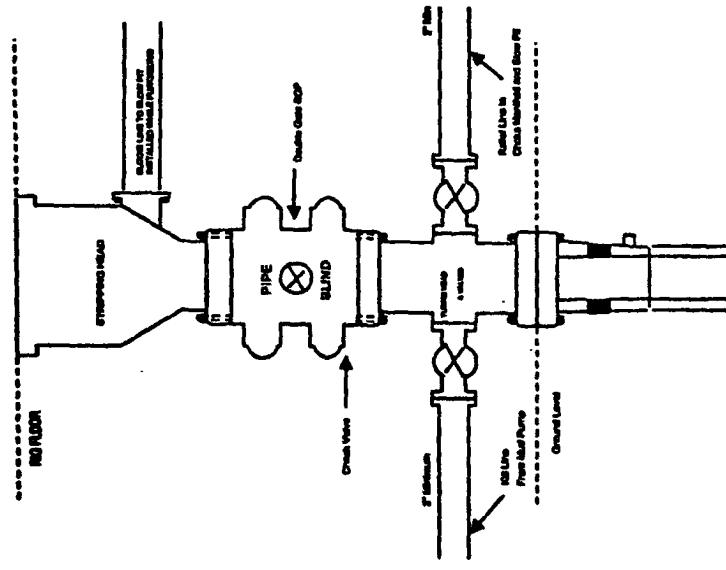
Date:

February 10, 2004

Drilling Engineer:

Jennifer McCarthy

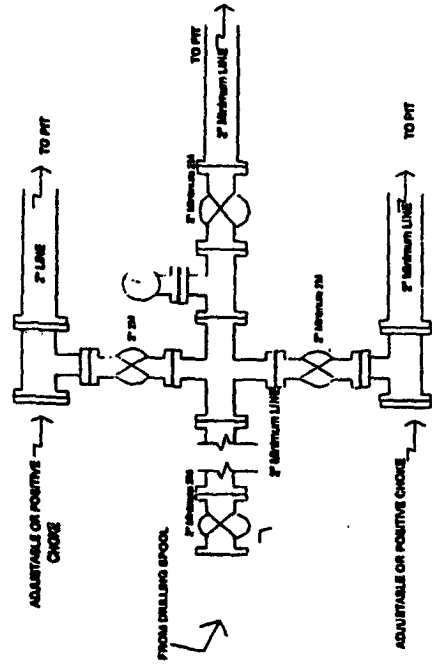
Completion/Workover Rig
BOP Configuration
2,000 psi System



Minimum BOP installation for all Completion/Workover Operations. 7-1/16" bore, 2000 psi minimum working pressure double gate BOP to be equipped with blind and pipe rams. A stripping head to be installed on the top of the BOP. All BOP equipment is 2000 psi working pressure or greater excluding 600 psi stripping head.

Figure #2

Drilling Rig
Choke Manifold Configuration
2000 psi System

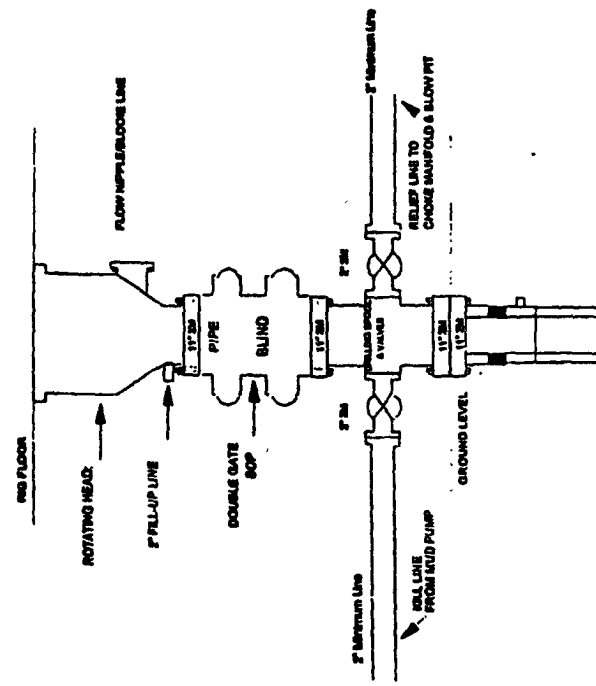


Choke manifold installation from Surface Casing Point to Total Depth. 2,000psi working pressure equipment with two chokes.

Figure #3

4-20-01

Drilling Rig
2000 psi System



BOP installation from Surface Casing Point to Total Depth. 11" Bore 10,000 psi minimum working pressure double gate BOP to be equipped with blind rams and pipe rams. A 600 psi casing head on top of ram preventers. All BOP equipment is 2,000 psi working pressure

Figure #1

4-20-01