

UNITED STATES  
DEPARTMENT OF THE INTERIOR  
BUREAU OF LAND MANAGEMENT

**SUNDRY NOTICES AND REPORTS ON WELLS**  
*Do not use this form for proposals to drill or to re-enter an  
Abandoned well Use Form 3160-3 (APD) for such proposals.*

FORM APPROVED  
OMB No. 1004-0135  
Expires November 30, 2000

5. Lease Serial No

NMNM 013685

6 If Indian, Allottee or tribe Name

If Unit or CA/Agreement, Name and/or No

NMNM 74013

**SUBMIT IN TRIPLICATE – Other instructions on reverse side**

1. Type of Well

☐ Oil Well☒ Gas Well☐ Other

2. Name of Operator

BP America Production Company Attn: Toya Colvin

If Unit or CA/Agreement, Name and No

Schwerdtfeger Com 1

9. API Well No.

30-045-20154

3a. Address

P.O. Box 3092 Houston, TX 77253

3b. Phone No (include area code)

281-366-7148

10 Field and Pool, or Exploratory Area

DK/ PC

4 Location of Well (Footage, Sec., T., R., M., or Survey Description)

1190' FSL 1190' FWL Sec 27 T31N R09W

11. County or Parish, State

San Juan, NM

## 12. CHECK APPROPRIATE BOX(ES) TO INDICATE NATURE OR NOTICE, REPORT, OR OTHER DATA

## TYPE OF SUBMISSION

☒ Notice of Intent☐ Subsequent Report☐ Final Abandonment Notice

## TYPE OF ACTION

☐ Acidize☐ Deepen☐ Production (Start/Resume)☐ Water shut-Off☐ Alter Casing☐ Fracture Treat☐ Reclamation☐ Well Integrity☐ Casing Repair☐ New Construction☐ Recomplete☐ Other☐ Change Plans☒ Plug and Abandon☐ Water Disposal☐ Convert to Injection☐ Plug Back

13. Describe Proposed or Completed Operation (clearly state all pertinent details, including estimated starting date of any proposed work and approximate duration thereof. If the proposal is to deepen directionally or recompleat horizontally, give subsurface locations and measured and true vertical depths of all pertinent markers and zones. Attach the Bond under which the work will be performed or provide the Bond No. on file with BLM/BIA. Required subsequent reports shall be filed within 30 days following completion of the involved operations. If the operation results in a multiple completion or recompleat in a new interval, a Form 3160-4 shall be filed once testing has been completed. Final Abandonment Notices shall be filed only after all requirements, including reclamation, have been completed, and the operator has determined that the site is ready for final inspection.

BP America respectfully requests permission to Plug and Abandon the above mentioned well.

RCVD JUL 30 '07

Please see attached procedure.

OIL CONS. DIV.  
DIST. 3

14. I hereby certify that the foregoing is true and correct

Name (Printed/typed)

Toya Colvin

Title Regulatory Analyst

Signature

Date 7/17/07

## THIS SPACE FOR FEDERAL OR STATE OFFICE USE

Approved by

Original Signed: Stephen Mason

Title

Date

JUL 26 2007

Conditions of approval, if any, are attached. Approval of this notice does not warrant or Certify that the applicant holds legal or equitable title to those rights in the subject lease which would entitle the applicant to conduct operations thereon.

Office

Title 18 U.S.C. Section 1001 and Title 43 U.S.C. Section 1212, make it a crime for any person knowingly and willfully to make to any department or agency of the United States any false, fictitious or fraudulent statements or representations as to any matter within its jurisdiction

NMOC

## SJ Basin Well Work Procedure

**Well Name:** Schwerdtfeger Com 1  
**Version:** 1.0  
**Date:** June 29, 2007  
**Repair Type:** P&A

---

**Objective: P&A for wellbore.**

1. TOH with completion.
  2. Mill out CIBP and P&A Dakota, MV, PC, FC and Ojo Alamo
  3. Ensure wellbore is clean of obstructions.
  4. Pump cement plugs and remove wellhead.
- 

**Pertinent Information:** Gas BTU content for this well is 1003; Sp gr. is 0.599. Data recorded in FDA on 11/4/2002. Venting and Flaring document needs to be followed if BTU content is above 950.

**Reference:**

**NOP 7812-01** Normal Operating Procedure Under balanced Well Control Tripping Procedure.  
**NOP 7804-01** Normal Operating Procedure Wellbore Air Purge.  
**NOP 7803-01** Procedure for At Risk Well Locations.  
**NOP 7814** Procedure for Flowback Operations

Location:	T31N-R9W-Sec27	API #:	30-045-20154
County:	San Juan	FlacWell:	97909402
State:	New Mexico	Lease Flac:	698923
Horizon:	PC/DK	Engr:	Anne Fickinger
		Ph	(505) 326-9483
		Cell:	(505) 486-9249

---

**Procedure:**

1. Perform pre-rig site inspection. Check for: size of location, Gas Taps, other wells, other operators, running equipment, wetlands, wash (dikes req.), H2S, barriers needed for equipment, Landowner issues, location of pits (buried lines in pits), Raptor nesting, critical location, check anchors. Check ID wellhead; if earth pit is required have One Call made 48 hours prior to digging.
2. Perform second site visit after lines are marked to ensure all lines clear marked pit locations. Planning and scheduling to ready location for rig.
3. RU slickline unit or wireline unit. Pressure test lubricator and equipment. RIH and set **two** barriers (CIBP, tbg collar stop w/plug, or plug set in nipple) for isolation in tubing string.
4. Check and record tubing, casing, and bradenhead pressures. Ensure production casing has double casing valves installed. Double valve all casing strings.

5. Notify BLM and NMOCD 24 hours prior to beginning operations.  
**Henry Villeneuve @ (505) 334-6178, Ext. 17 or Charlie Perrin (ext 16).**  
**BLM Contact (505) 599-8907**
6. MIRU workover rig. LOTO all necessary equipment including but not limited to: meter run, automation, separator, and water line.
7. Blow down casing to pit or flowback tank. Pump tubing capacity plus 5 barrels of 2% KCL water to displace any potential condensate in tubing string.
8. Rig up water pump. Remove horsehead and test tubing.
9. Blow down well.
10. Rig down polish rod and trip out of hole
11. RU WL unit. Pressure test lubricator and equipment with shut-in wellhead gas pressure. TIH and set two barriers (profile plugs, CIBPs or G-packoffs) for isolation of tubing string and to comply with DWOP double barriers.
12. Check all casing strings to ensure no pressure exist on any annulus. **The operations of removal of wellhead and installation of BOP's will be performed under a dispensation for one (1) barrier on the backside**
13. Nipple down Wellhead. NU BOPs and diversion spool with 3" outlets and 3" pipe to the blow tank. Pressure test BOPs to 200 psi above BHP
14. Install stripping rubber, pull tubing hanger and shut pipe rams. Strip tubing hanger out of hole.
15. TOO H and LD 2-3/8" production tubing currently set at 2970
16. RIH with workstring and drill out cement retainer set @ 3200' utilizing appropriate media to keep well dead. Clean out hole. LD workstring.
17. RIH with workstring and to CIBP @ 7250'. Load well with fluid to bottom of MV formation (5620' Mancos top). Shoot or tag fluid level to determine displacement for balanced plug in un-unbalanced wellbore. Pump and displace 250' plug on top of CIBP (+/- 7250'). POOH. WOC. This should P&A the DK formation.  
 → *Gally plug 6472'-6372'*
12. RIH to 4600'. Pump and displace 300' balanced plug. POOH. WOC. This should place cement across the Mesaverde formation. *(4753'-4653')*
- *Chacrc plug 4472'-4372'*
13. RIH to 2864' and set plug. Pump and displace 344' plug (2550'). POOH. WOC. This should place cement across the PC/FT formation. *(3096'-2514')*
14. RIH to 1500' and set plug. Pump and displace 300' plug. POOH. WOC. This should place cement across the Ojo Alamo formation. *(1653'-1477')*  
 → *plug 9 5/8" casing shoe 253'-153'*

15. RIH to 110' and perforate 4-1/2" casing. Attempt to establish circulation between 4-1/2" and 7" casing. Pump and displace 110' plug. This should put cement in all annuli and across surface casing shoe from 110' to surface.
16. Perform underground disturbance and hot work permits. Cut off tree.
17. If cement cannot be seen on all annulus and casing strings remedial cementing will be required from surface.
18. Install 4' well marker and identification plate per NMOCD requirements.
19. RD and release all equipment. Remove all LOTO equipment.
20. Ensure all reports are loaded into DIMS. Print out summary of work and place in Wellfile. Notify Sherri Bradshaw of completed P&A.

# Schwerdtfeger Com 1

Sec 27, T31N, R9W

API # 30-045-20154

Elev. 6083' GR

## History

Completed in DK in 1/68

Recompleted to PC in 6/05

## PC Perforations

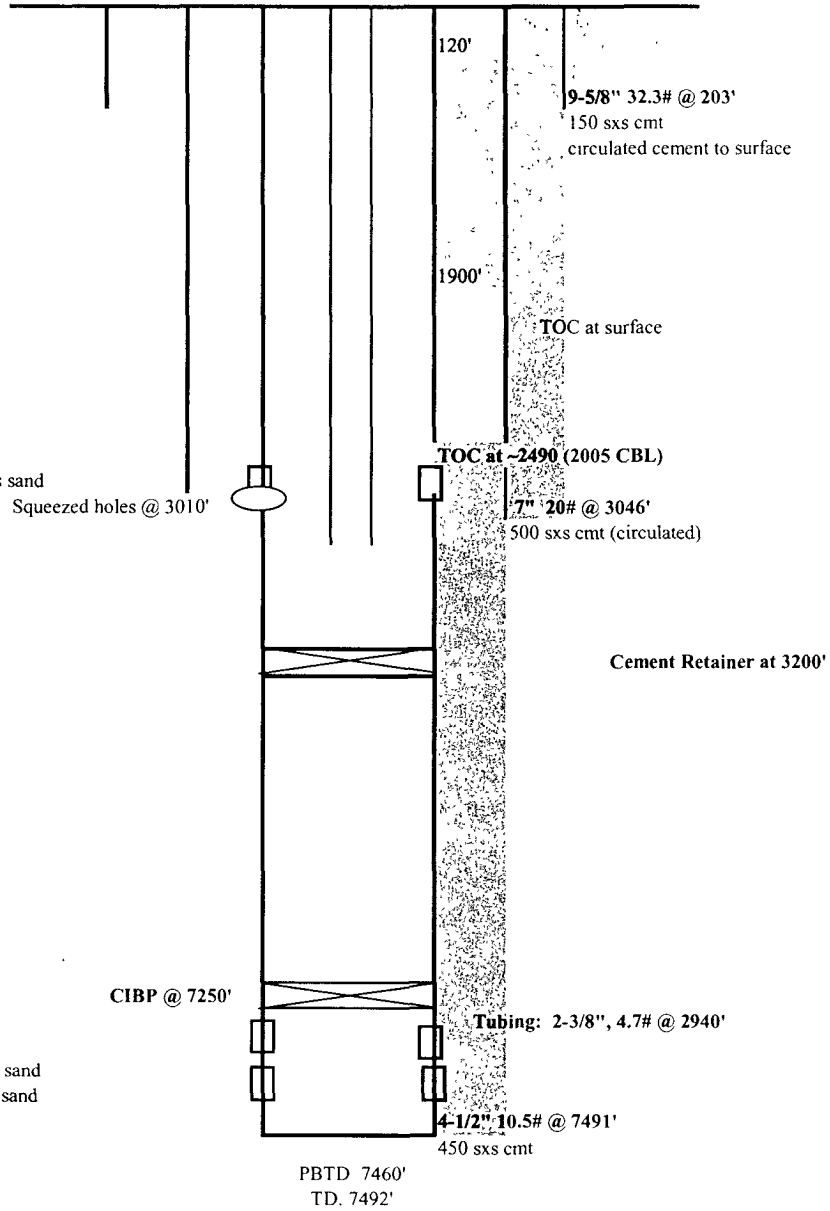
2914 - 3034' w/ 120,721 #'s sand

Squeezed holes @ 3010'

## Dakota Perforations

7276' - 7342' w/ 60,000 #'s sand

7400' - 7460' w/ 40,000 #'s sand



updated. 6/29/07 AF

PROPOSED PLUGS

**Schwerdtfeger Com 1**

Sec 27, T31N, R9W

API # 30-045-20154

Elev. 6083' GR

History:

Completed in DK in 1/68  
Recompleted to PC in 6/05

PC Perforations

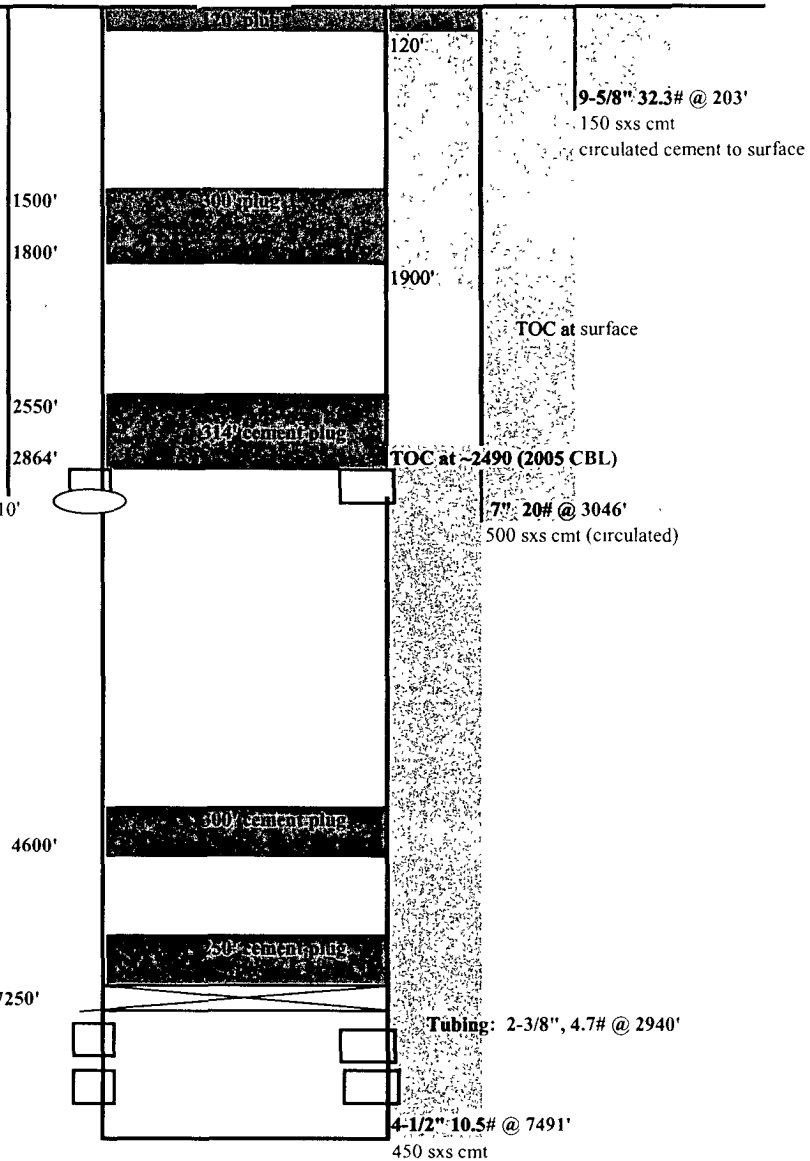
2914 - 3034' w/ 120,721#'s sand  
Squeezed holes @ 3010'

Dakota Perforations

7276' - 7342' w/ 60,000 #'s sand  
7400' - 7460 w/ 40,000 #'s sand

CIBP @ 7250'

PBTD: 7460'  
TD. 7492'



updated: 6/29/07 AF

**UNITED STATES DEPARTMENT OF THE INTERIOR  
BUREAU OF LAND MANAGEMENT  
FARMINGTON DISTRICT OFFICE  
1235 LA PLATA HIGHWAY  
FARMINGTON, NEW MEXICO 87401**

Attachment to notice of  
Intention to Abandon:

Re: Permanent Abandonment  
Well: 1 Schwerdfeger Com

**CONDITIONS OF APPROVAL**

1. Plugging operations authorized are subject to the attached "General Requirements for Permanent Abandonment of Wells on Federal and Indian Lease."

2. Farmington Office is to be notified at least 24 hours before the plugging operations commence (505) 599-8907.

3. The following modifications to your plugging program are to be made:

- a) Place a cement plug from 6472' – 6372' to cover the top of the Gallup.
- b) Place the Mesaverde plug from 4753' – 4653'.
- c) Place a cement plug from 4472' – 4372' to cover the top of the Chacra.
- d) Place the 7" casing shoe/Pictured Cliffs/Fruitland plug from 3096' - 2514'.
- e) Place the Kirtland/Ojo Alamo plug from 1653' – 1477'.
- f) Place a cement plug from 253' – 153' to cover the 9 5/8" casing shoe.

You are also required to place cement excesses per 4.2 and 4.4 of the attached General Requirements.

Office Hours: 7:45 a.m. to 4:30 p.m.