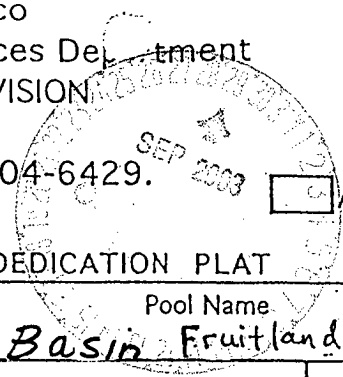


State of New Mexico
Energy Minerals & Mining Resources Department
OIL CONSERVATION DIVISION
P. O. Box 6429
Santa Fe, New Mexico 87504-6429.

Form C-102



☐ AMENDED REPORT

WELL LOCATION AND ACREAGE DEDICATION PLAT

API Number 30-045-30526	Pool Code 71629	Pool Name Basin Fruitland Coal
Property Code	Property (Well) Name Texakoma Federal 6	
OGRID No. 022521	Operator Name Texakoma Oil & Gas Corporation	
		Well Number 2
		Elevation 6048'

Surface Location

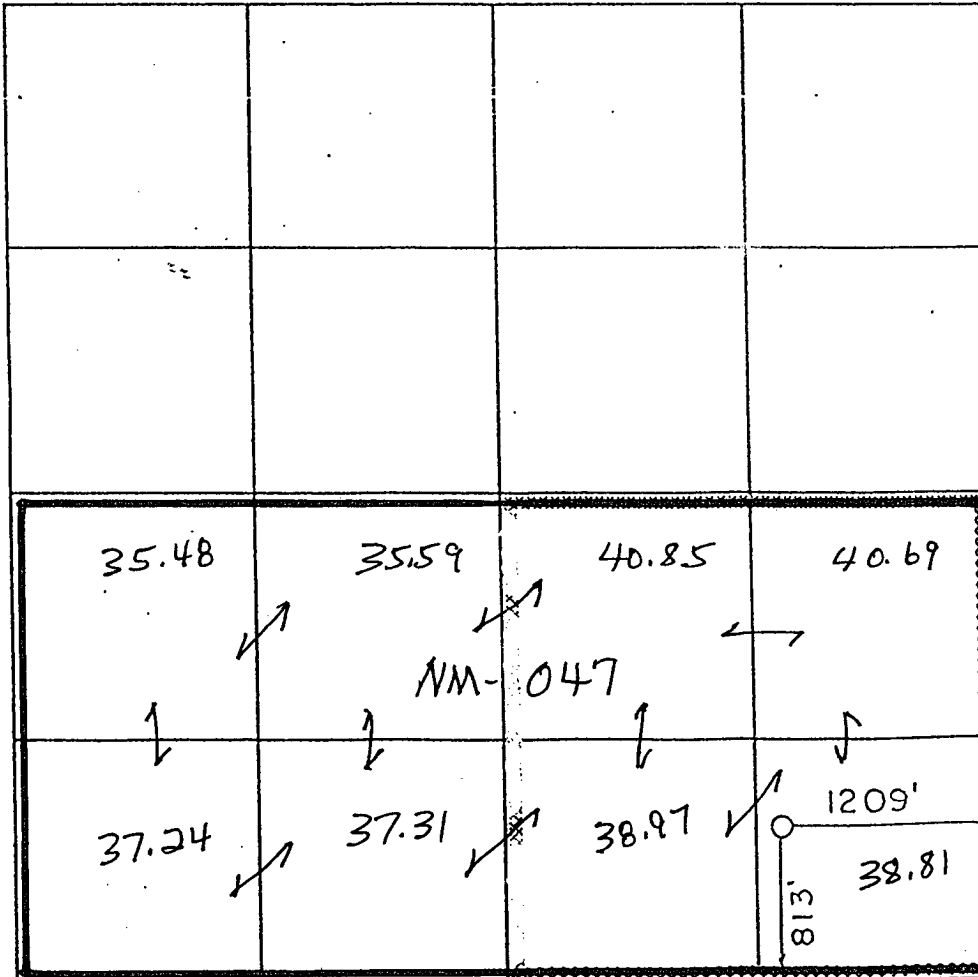
UL or Lot P	Sec. 6	Twp. 30 N	Rge. 12 W	Lot Idn.	Feet from > 813	North/South South	Feet from > 1209	East/West East	County San Juan
----------------	-----------	--------------	--------------	----------	--------------------	----------------------	---------------------	-------------------	--------------------

Bottom Hole Location If Different From Surface

UL or Lot	Sec.	Twp.	Rge.	Lot Idn.	Feet from >	North/South	Feet from >	East/West	County
-----------	------	------	------	----------	-------------	-------------	-------------	-----------	--------

Dedication S/30494	Joint? N	Consolidation	Order No.
-----------------------	-------------	---------------	-----------

NO ALLOWABLE WILL BE ASSIGNED TO THIS COMPLETION UNTIL ALL INTERESTS HAVE BEEN CONSOLIDATED
OR A NON-STANDARD UNIT HAS BEEN APPROVED BY THE DIVISION



OPERATOR CERTIFICATION

I hereby certify that the information contained herein is true and complete to the best of my knowledge and belief.

Signature *Tom Sprinkle*

Printed Name *TOM SPRINKLE*

Title *Drilling Manager*

Date *9-23-2003*

SURVEYOR CERTIFICATION

I hereby certify that the well location on this plat was plotted from field notes of actual surveys made by me or under my supervision, and that the same is true and correct to the best of my belief.

Date of Survey

Signature and Seal

Professional Surveyor 6844

REGISTERED LAND SURVEYOR

Certificate Number

