

UNITED STATES  
DEPARTMENT OF THE INTERIOR  
BUREAU OF LAND MANAGEMENT

**SUNDRY NOTICES AND REPORTS ON WELLS**

Do not use this form for proposals to drill or to deepen or reentry to a different reservoir.  
Use "APPLICATION FOR PERMIT--" for such proposals

**SUBMIT IN TRIPLICATE**

1. Type of Well

☐ Oil ☒ Gas ☐ Other

2. Name of Operator

D.J. Simmons Inc.

3. Address and Telephone No.

1009 Ridgeway Place, Suite 200, Farmington NM 87401 (505) 326-3753

4. Location of Well (Footage, Sec., T., R., M., or Survey Description)

Surface 890' FSL x 990' FWL, Section 23, T29N, R9W 'M' Lot 13

FORM APPROVED

2007 AUG - 9 Budget Bureau No. 1004-0135  
Expires: March 31, 1993

5. Lease Designation and Serial No.

SF 080000-A

6. If Indian, Allottee or Tribe Name

N/A

7. If Unit or CA, Agreement Designation

8. Well Name and No.

Simmons E No. 2

9. API Well No.

30 05-045-07944

10. Field and Pool, or Exploratory Area

Blanco Mesaverde

11. County or Parish, State

San Juan, New Mexico

12. CHECK APPROPRIATE BOX(s) TO INDICATE NATURE OF NOTICE, REPORT, OR OTHER DATA

TYPE OF SUBMISSION

☒ Notice of Intent

☐ Subsequent Report

☐ Final Abandonment Notice

TYPE OF ACTION

☐ Abandonment

☒ Recompletion

☐ Plugging Back

☐ Casing Repair

☐ Altering Casing

☐ Other Site Security Dwg

☐ Change of Plans

☐ New Construction

☐ Non-Routine Fracturing

☐ Water Shut-Off

☐ Conversion to Injection

☐ Dispose Water

(Note: Report results of multiple completion on Well Completion or Recompletion Report and Log form)

13. Describe Proposed or Completed Operations (Clearly state all pertinent details, and give pertinent dates, including estimated date of starting any proposed work. If well is directionally drilled, give subsurface locations and measured and true vertical depth for all markers and zones pertinent to this work.)\*

*Other*  
DJ Simmons, Inc. is planning a recompletion to the Chacra formation. See attachment well bore diagram/  
procedure summary.

No pit will be required for this procedure.

SEE ATTACHED FOR  
CONDITIONS OF APPROVAL

RCVD AUG 22 '07  
OIL CONS. DIV.  
DIST. 3

14. I hereby certify that the foregoing is true and correct

Signed

*Rodney L. Seale 8/6/07*

Title Operations Engineer

Rodney L. Seale

Date: 8/3/2007

(This space for Federal or State office use)

Approved by

*[Signature]*

Title

*FE*

Date

AUG 05 2007

Conditions of approval, if any:

Title 18 U.S.C. Section 1001, makes it a crime for any person knowingly and willfully to make to any department or agency of the United States any false, fictitious or fraudulent statements or representations as to any matter within its jurisdiction.

\*See Instruction on Reverse Side

OPERATOR

NMDCD

Submit 3 Copies To Appropriate District  
Office  
District I  
1625 N. French Dr., Hobbs, NM 88240  
District II  
1301 W. Grand Ave., Artesia, NM 88210  
District III  
1000 Rio Brazos Rd., Aztec, NM 87410  
District IV  
1220 S. St. Francis Dr., Santa Fe, NM  
87505

State of New Mexico  
Energy, Minerals and Natural Resources

Form C-103  
May 27, 2004

OIL CONSERVATION DIVISION  
1220 South St. Francis Dr.  
Santa Fe, NM 87505

WELL API NO.  
30-045-07944

5. Indicate Type of Lease

STATE ☐ FEE ☐

6. State Oil & Gas Lease No.  
Federal  
SF 0800000-A  
RECEIVED  
AM 7:59  
SANTA FE, NM

7. Lease Name or Unit Agreement Name

Simmons E

8. Well Number #2

9. OGRID Number  
005578

10. Pool name or Wildcat  
Blanco Mesaverde

Otero Chacra 82329

SUNDRY NOTICES AND REPORTS ON WELLS

(DO NOT USE THIS FORM FOR PROPOSALS TO DRILL OR TO DEEPEN OR PLUG BACK TO A DIFFERENT RESERVOIR. USE "APPLICATION FOR PERMIT" (FORM C-101) FOR SUCH PROPOSALS.)

1. Type of Well: Oil Well ☐ Gas Well ☒ Other

2. Name of Operator

D. J. Simmons, Inc

3. Address of Operator

1009 Ridgeway Pl., Suite 200, Farmington, NM 87401

4. Well Location

Unit Letter M : 890 feet from the South line and 990 feet from the West line  
Section 23 Township 29N Range 9W NMPM San Juan County

11. Elevation (Show whether DR, RKB, RT, GR, etc.)  
5886' GL

Pit or Below-grade Tank Application ☐ or Closure ☐

Pit type \_\_\_\_\_ Depth to Groundwater \_\_\_\_\_ Distance from nearest fresh water well \_\_\_\_\_ Distance from nearest surface water \_\_\_\_\_

Pit Liner Thickness: \_\_\_\_\_ mil Below-Grade Tank: Volume \_\_\_\_\_ bbls; Construction Material \_\_\_\_\_

12. Check Appropriate Box to Indicate Nature of Notice, Report or Other Data

NOTICE OF INTENTION TO:

PERFORM REMEDIAL WORK ☐ PLUG AND ABANDON ☐

TEMPORARILY ABANDON ☐ CHANGE PLANS ☐

PULL OR ALTER CASING ☐ MULTIPLE COMPL ☐

OTHER: Re complete ☒

SUBSEQUENT REPORT OF:

REMEDIAL WORK ☐ ALTERING CASING ☐

COMMENCE DRILLING OPNS. ☐ P AND A ☐

CASING/CEMENT JOB ☐

OTHER: ☐

13. Describe proposed or completed operations. (Clearly state all pertinent details, and give pertinent dates, including estimated date of starting any proposed work). SEE RULE 1103. For Multiple Completions: Attach wellbore diagram of proposed completion or recompletion.

DJ Simmons, Inc. is planning a recompletion to the Chacra formation. See attachment well bore diagram/ procedure summary.  
No pit will be required for this procedure.

I hereby certify that the information above is true and complete to the best of my knowledge and belief. I further certify that any pit or below-grade tank has been/will be constructed or closed according to NMOCD guidelines ☒, a general permit ☐ or an (attached) alternative OCD-approved plan ☐.

SIGNATURE Rodney L. Seale 8/6/07 TITLE Operations Engineer DATE August 3, 2007

Type or print name Rodney L. Seale

E-mail address: rseale@djsimmons.com Telephone No. 505-326-3753

For State Use Only

APPROVED BY: [Signature] TITLE \_\_\_\_\_ DATE 8/17/07

Conditions of Approval (if any):

RCVD AUG 10 '07

OIL CONS. DIV.  
DIST. 3

## District I

1625 N. French Dr., Hobbs, NM 88240

## District II

1301 W. Grand Avenue, Artesia, NM 88210

## District III

1000 Rio Brazos Rd., Aztec, NM 87410

## District IV

1220 S. St. Francis Dr., Santa Fe, NM 87505

State of New Mexico  
Energy, Minerals & Natural Resources Department  
**OIL CONSERVATION DIVISION**  
1220 South St. Francis Dr.  
Santa Fe, NM 87505

Form C-102

Revised October 12, 2005

Submit to Appropriate District Office

State Lease - 4 Copies

Fee Lease - 3 Copies

☐ AMENDED REPORT

## WELL LOCATION AND ACREAGE DEDICATION PLAT

<sup>1</sup> API Number <b>30</b> -05-045-07944	<sup>2</sup> Pool Code 82329	<sup>3</sup> Pool Name Otero Chacra (Gas)	RCVD AUG 22 '07 <b>OIL CONS. DIV.</b>
<sup>4</sup> Property Code 010172	<sup>5</sup> Property Name Simmons E		Well Number <b>DIST. 3</b> 2
<sup>7</sup> OGRID No. 00578	<sup>6</sup> Operator Name DJ Simmons Inc		<sup>8</sup> Elevation 5886 GL

<sup>10</sup> Surface Location

UL or lot no.	Section	Township	Range	Lot Idn	Feet from the	North/South line	Feet from the	East/West line	County
M	23	29N	9W	(13)	890	South	990	West	San Juan

<sup>11</sup> Bottom Hole Location If Different From Surface

UL or lot no.	Section	Township	Range	Lot Idn	Feet from the	North/South line	Feet from the	East/West line	County
---------------	---------	----------	-------	---------	---------------	------------------	---------------	----------------	--------

<sup>12</sup> Dedicated Acres 146.09	<sup>13</sup> Joint or Infill	<sup>14</sup> Consolidation Code	<sup>15</sup> Order No.
---	-------------------------------	----------------------------------	-------------------------

No allowable will be assigned to this completion until all interests have been consolidated or a non-standard unit has been approved by the division.

<sup>16</sup> 	<sup>17</sup> <b>OPERATOR CERTIFICATION</b> I hereby certify that the information contained herein is true and complete to the best of my knowledge and belief, and that this organization either owns a working interest or unleased mineral interest in the land including the proposed bottom hole location or has a right to drill this well at this location pursuant to a contract with an owner of such a mineral or working interest, or to a voluntary pooling agreement or a compulsory pooling order heretofore entered by the division. Signature: <u>Rodey L. Seale</u> Date: <u>08/22/07</u> Rodey L. Seale Printed Name: _____

COMPANY D. Jack Simmons

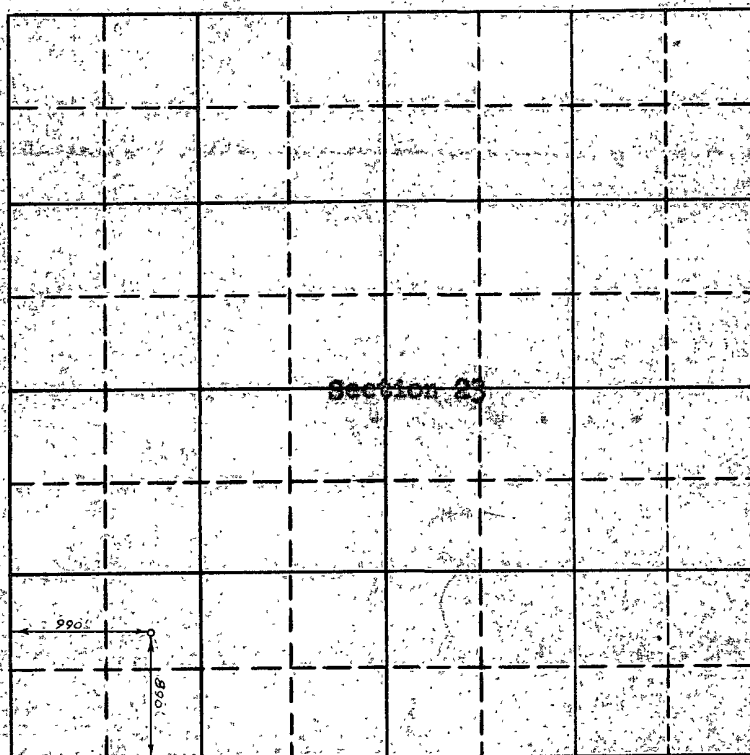
Well Name & No. Simmons 2 E Lease No. 080000-A

Location 990 Ft. from the West line 890 feet from the South line

Being in The SW<sup>4</sup> of the SW<sup>4</sup>

Sec. 23, T29N., R9W., N.M.P.M., San Juan County, New Mexico

Ground Elevation 5885.66



Scale -- 4 inches equals 1 mile

Surveyed February 16, 19 52

This is to certify that the above plat was prepared from field notes of actual surveys made by me or under my supervision and that the same are true and correct to the best of my knowledge and belief.

C. O. Walker  
Registered Professional  
Engineer and Land Surveyor.

Seal:

Farmington, New Mexico

RCVD AUG 23 1957  
OIL CONS. DIV.  
DIST. 3

1-A



## Simmons E #2

Location: Surface: 890' FSL, 990' FWL,  
Sec 23, T29N, R9W, San Juan  
County, New Mexico  
Lease #: SF 080000-A

Field: Blanco

Zone: Mesa Verde

API #: 30-045-07944

Spud Date: August 8, 1952

Elevation: 5886' GL

9 5/8" CSA 110' w/ 75sx, circ

### Procedure Summary:

- Plug back open hole with cement retainer set in 7" casing at 3900' and 100sx cement pumped through retainer
- Load casing with water and run bond log to determine cement top
- Run neutron log
- Repair primary cement as necessary with BLM approval prior to repair.
- Perforate Chacra section over 3300' to 3500'. New log will determine perforations. Location will be reported on subsequent sundry.
- Foam frac Chacra down 3 1/2" frac string under a packer with 70Q foamed xlink 2% KCl water and install 65,000# 16/30 mesh sand.
- Clean well up with air and return to production.

TOC: unknown

RCVD AUG 22 '07

OIL CONS. DIV.

DIST. 3

7" 23# J55 CSA 3942' w/ 300sx

8 3/4" hole TD at 3952'

11-18-52 Open hole shot by Ind. Eastern Torpedo from 4030-4853' with 3 1/2" and 4 1/2" shells of 20qt and 30qt SNG-Nitro, 1915 Qts used

2 3/8" tubing landed at 4846' in open hole. Suspect 1 joint, PS, 145 jts to surface.

TD: 4,856'; PBTD: unknown

7/5/95 Bob Griffie thought the 2 3/8" was stuck at 4846' in the open hole



Simmons E #2

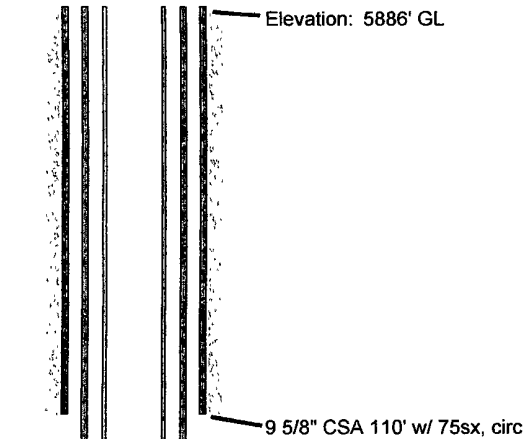
Location: Surface: 890' FSL, 990' FWL,  
Sec 23, T29N, R9W, San Juan  
County, New Mexico  
Lease #: SF 080000-A

Field: Blanco

Zone: Mesa Verde

API #: 30-045-07944

Spud Date: August 8, 1952



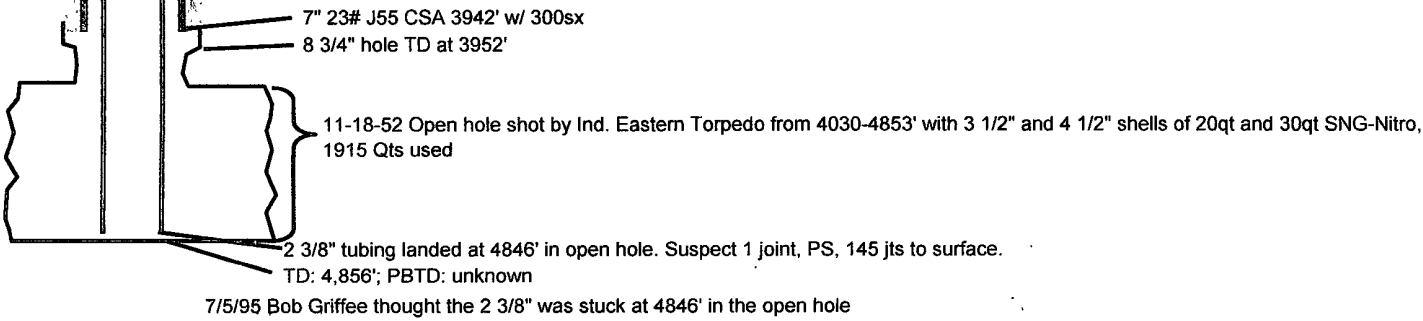
Procedure Summary:

- Plug back open hole with cement retainer set in 7" casing at 3900' and 100sx cement pumped through retainer
- Load casing with water and run bond log to determine cement top
- Run neutron log
- Repair primary cement as necessary with BLM approval prior to repair.
- Perforate Chacra section over 3300' to 3500'. New log will determine perforations. Location will be reported on subsequent sundry.
- Foam frac Chacra down 3 1/2" frac string under a packer with 70Q foamed xlink 2% KCl water and install 65,000# 16/30 mesh sand.
- Clean well up with air and return to production.

TOC: unknown

RCVD AUG 22 '07  
OIL CONS. DIV.

DIST. 3



## **BLM CONDITIONS OF APPROVAL**

### ***WORKOVER, RECOMPLETION & CASING REPAIR OPERATIONS:***

- 1. A properly functioning BOP and related equipment must be installed prior to commencing worker and/or recompletion operations.**
- 2. If this well is in a Seasonal Closure Area, adhere to the closure requirements and timeframes.**

### ***SURFACE USE OPERATIONS:***

The following Stipulations will apply to this well unless a particular Surface Managing Agency or private surface owner has supplied to BLM and operator a contradictory environmental stipulation. The failure of operator to comply with these requirements may result in assessments or penalties pursuant to 43 CFR 3163.1 or 3163.2. A copy of these conditions of approval shall be present on location during construction, drilling and reclamation activity.

An agreement between operator and fee landowner will take precedence over BLM surface stipulations unless (in reference to 43 CFR Part 3160) 1) BLM determines that operator's actions will affect adjacent Federal or Indian surface, or 2) operator does not maintain well area and lease premises in a workmanlike manner with due regard for safety, conservation and appearance, or 3) no such agreement exists, or 4) in the event of well abandonment, minimal Federal restoration requirements will be required.

***STANDARD STIPULATIONS:*** All surface areas disturbed during work-over activities and not in use for production activities will be reseeded. This should occur in the first 90 days after completion of work-over activities.

### ***SPECIAL STIPULATIONS:***

- 1. Pits will be fenced during work-over operation.**
- 2. All disturbance will be kept on existing pad.**
- 3. All pits will be pulled and closed immediately upon completion of the work-over activities.**
- 4. Pits will be lined with an impervious material at least 12 mils thick.**

RCVD AUG 22 '07

OIL CONS. DIV.