

DISTRICT I  
P.O. Box 1980, Hobbs, N.M. 88241-1980

DISTRICT II  
P.O. Drawer DD, Artesia, N.M. 88211-0719

DISTRICT III  
1000 Rio Brazos Rd., Aztec, N.M. 87410

DISTRICT IV  
PO Box 2088, Santa Fe, NM 87504-2088

State of New Mexico  
Energy, Minerals & Natural Resources Department

OIL CONSERVATION DIVISION

P.O. Box 2088  
Santa Fe, NM 87504-2088

Form C-102  
Revised February 21, 1994  
Instructions on back  
Submit to Appropriate District Office  
State Lease - 4 Copies  
Fee Lease - 3 Copies

☐ AMENDED REPORT

WELL LOCATION AND ACREAGE DEDICATION PLAT

<sup>1</sup> API Number 30-039-26093	<sup>2</sup> Pool Code 97036	<sup>3</sup> Pool Name La Jara Canyon, Tertiary
<sup>4</sup> Property Code 24248	<sup>5</sup> Property Name JICARILLA 29-02-20	<sup>6</sup> Well Number 1
<sup>7</sup> OGRID No. 151618	<sup>8</sup> Operator Name MALLON OIL COMPANY	<sup>9</sup> Elevation 7138'

<sup>10</sup> Surface Location

UL or lot no.	Section	Township	Range	Lot Idn	Feet from the	North/South line	Feet from the	East/West line	County
D	20	29-N	2-W		860	NORTH	660	WEST	RIO ARRIBA

<sup>11</sup> Bottom Hole Location If Different From Surface

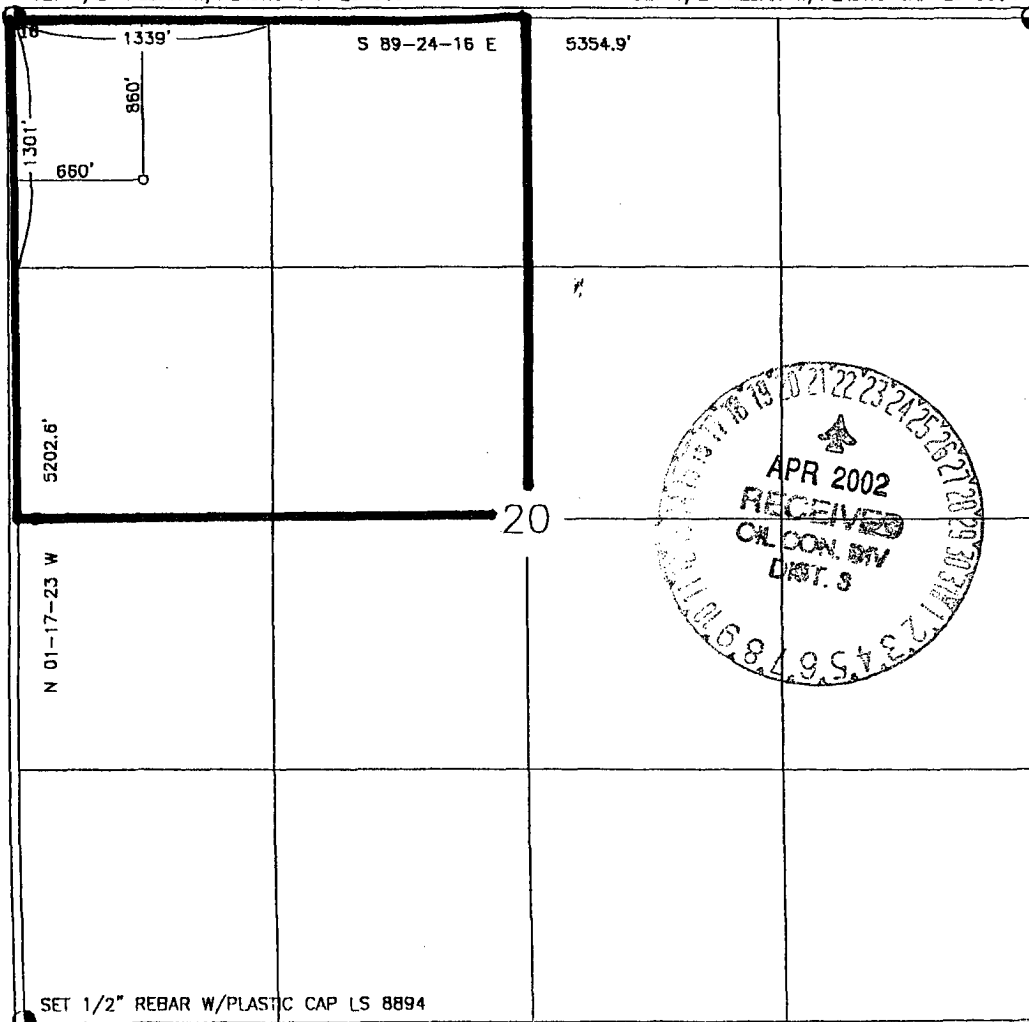
UL or lot no.	Section	Township	Range	Lot Idn	Feet from the	North/South line	Feet from the	East/West line	County

<sup>12</sup> Dedicated Acres 160	<sup>13</sup> Joint or Infill	<sup>14</sup> Consolidation Code	<sup>15</sup> Order No.
--------------------------------------	-------------------------------	----------------------------------	-------------------------

NO ALLOWABLE WILL BE ASSIGNED TO THIS COMPLETION UNTIL ALL INTERESTS HAVE BEEN CONSOLIDATED  
OR A NON-STANDARD UNIT HAS BEEN APPROVED BY THE DIVISION

SET 1/2" REBAR W/PLASTIC CAP LS 8894

SET 1/2" REBAR W/PLASTIC CAP LS 8894



17 OPERATOR CERTIFICATION

I hereby certify that the information contained herein is true and complete to the best of my knowledge and belief

Signature  
Robert Blaylock  
Printed Name  
District Manager  
Title  
4/18/02  
Date

18 SURVEYOR CERTIFICATION

I hereby certify that the well location shown on this plat was plotted from field notes of actual surveys made by me or under my supervision, and that the same is true and correct to the best of my belief

11-5-98  
Date of Survey  
Signature and Seal of Professional Surveyor  
ROY A. RUSH  
NEW MEXICO  
REGISTERED PROFESSIONAL LAND SURVEYOR  
8894  
Certificate Number