

UNITED STATES  
DEPARTMENT OF THE INTERIOR  
BUREAU OF LAND MANAGEMENT

OIL CONSERVATION DIVISION  
RECEIVED  
JUN 8 1995  
AM 8 52  
N 9:47

Form approved.  
Budget Bureau No. 1004-0136  
Expires: December 31, 1991

APPLICATION FOR PERMIT TO DRILL OR DEEPEN

1a. TYPE OF WORK

DRILL ☒

DEEPEN ☐

b. TYPE OF WELL

OIL WELL ☐

GAS WELL ☐

OTHER ☐

SINGLE ZONE ☐

MULTIPLE ZONE ☒

2. NAME OF OPERATOR

Attention

Amoco Production Company

Julia L. Acavado Patty Mae Fele

3. ADDRESS AND TELEPHONE NO.

P.O. Box 800

Denver

Colorado

80201

4. LOCATION OF WELL (Report location clearly and in accordance with any State requirements.)

At surface

1880FNL & 1780FEL

At proposed prod. zone

14. DISTANCE IN MILES AND DIRECTION FROM NEAREST TOWN OR POST OFFICE\*

31 Miles from Aztec, N.M.

15. DISTANCE FROM PROPOSED\* LOCATION TO NEAREST PROPERTY OR LEASE LINE, FT. (Also to nearest drlg. unit line, if any)

18. DISTANCE FROM PROPOSED LOCATION\* TO NEAREST WELL, DRILLING, COMPLETED, OR APPLIED FOR, ON THIS LEASE, FT.

21. ELEVATIONS (Show whether DF, RT, OR, etc.)

8715 GL 6732

This action is subject to technical and procedural review pursuant to 43 CFR 3165.3 and appeal pursuant to 43 CFR 3165.4.

23. PROPOSED CASING AND CEMENTING PROGRAM

SIZE OF HOLE	GRADE, SIZE OF CASING	WEIGHT PER FOOT	SETTING DEPTH	QUANTITY OF CEMENT
17.5"	13.375"	54.5#	50'	61 cu.ft. CI B Cement to Surface
12.25	9.625"	36#	3090'	1548 cu.ft. CI B Cement to Surface
8.75	2.875"	6.5#	5530' 7461'	1194 cu.ft. CI B

Notice of Staking was submitted on 3/9/95 as the Florance #68E.

DRILLING OPERATIONS AUTHORIZED ARE  
SUBJECT TO COMPLIANCE WITH ATTACHED  
"GENERAL REQUIREMENTS"

Lease Description: T27N-R8W:

Sec. 17: ALL

Sec. 18: E/2, Lots 1,2, E/2NW/4

Sec. 19: E/2

Sec. 20: ALL

Sec. 21: S/2

RECEIVED  
AUG 16 1995

RECEIVED  
JUN 12 1995  
OIL CON. DIV.  
DIST. 3

IN ABOVE SPACE DESCRIBE PROPOSED PROGRAM: If proposal is to deepen, give data on present productive zone and proposed new productive zone. If proposal is to drill or deepen directionally, give pertinent data on subsurface locations and measured and true vertical depths. Give blowout preventer program, if any.

24.

SIGNED

TITLE Sr. Staff Assistant

DATE

04-28-1995

(This space for Federal or State office use)

PERMIT NO.

APPROVAL DATE

Application approval does not warrant or certify that the applicant holds legal or equitable title to those rights in the subject lease which would entitle the applicant to conduct operations thereunder.

CONDITIONS OF APPROVAL, IF ANY:

APPROVED BY

TITLE

\* See Instructions On Reverse Side

Title 18 U.S.C. Section 1001, makes it a crime for any person knowingly and willfully to make a false statement.

APPROVED  
AS AMENDED

JUN 13 1995  
DISTRICT MANAGER

District I  
PO Box 1980, Hobbs, NM 88241-1980  
District II  
PO Drawer DD, Artesia, NM 88211-0719  
District III  
1000 Rio Brazos Rd., Aztec, NM 87410  
District IV  
PO Box 2088, Santa Fe, NM 87504-2088

State of New Mexico  
Energy, Minerals & Natural Resources Department

OIL CONSERVATION DIVISION  
PO Box 2088  
Santa Fe, NM 87504-2088

Form C-102

Revised February 21, 1994

Instructions on back

Submit to Appropriate District Office

State Lease - 4 Copies

Fee Lease - 3 Copies

☒ AMENDED REPORT

WELL LOCATION AND ACREAGE DEDICATION PLAT

Revise Elev. 3-23-95

API Number <u>30-045-24273</u>	Pool Code 71599	Pool Name Basin Dakota
Property Code <u>518</u>	Property Name FLORANCE	Well Number # 62E
OGRID No. 00778	Operator Name AMOCO PRODUCTION COMPANY	Elevation 6732

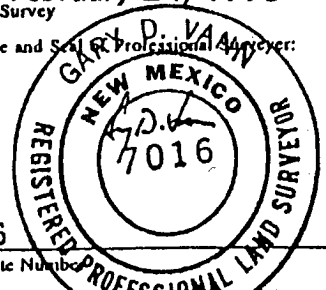
10 Surface Location

UL or lot no. G	Section 20	Township 27 N	Range 8 W	Lot Idm	Feet from the 1880	North/South line NORTH	Feet from the 1780	East/West line EAST	County SAN JUAN
--------------------	---------------	------------------	--------------	---------	-----------------------	---------------------------	-----------------------	------------------------	--------------------

11 Bottom Hole Location If Different From Surface

UL or lot no.	Section	Township	Range	Lot Idm	Feet from the	North/South line	Feet from the	East/West line	County
Dedicated Acres 320		Joint or Infill		Consolidation Code		Order No.			

NO ALLOWABLE WILL BE ASSIGNED TO THIS COMPLETION UNTIL ALL INTERESTS HAVE BEEN CONSOLIDATED  
OR A NON-STANDARD UNIT HAS BEEN APPROVED BY THE DIVISION

16	1331.05'	1336.17'	1288.65'	1288.65'	1880'	1780'	1336.17'	1331.05'	20	1246.24'	1246.25'	17	OPERATOR CERTIFICATION I hereby certify that the information contained herein is true and complete to the best of my knowledge and belief  <u>Patty Haeefe</u> Signature Patty Haeefe Printed Name Staff Assistant Title August 15, 1995 Date
RECEIVED AUG 16 1995 OIL CON. DIV. DIST. 3												18 SURVEYOR CERTIFICATION I hereby certify that the well location shown on this plat was plotted from field notes of actual surveys made by me or under my supervision, and that the same is true and correct to the best of my belief.  February 24, 1995 Date of Survey Signature and Seal of Professional Surveyor:  7016 Certificate Number	

BLM RECORD

District I  
PO Box 1980, Hobbs, NM 88241-1980  
District II  
PO Drawer DD, Artesia, NM 88211-0719  
District III  
1000 Rlo Brazos Rd., Aztec, NM 87410  
District IV  
PO Box 2088, Santa Fe, NM 87504-2088

State of New Mexico  
Energy, Minerals & Natural Resources Department

OIL CONSERVATION DIVISION  
PO Box 2088  
Santa Fe, NM 87504-2088

Form C-102  
Revised February 21, 1994  
Instructions on back  
Submit to Appropriate District Office  
State Lease - 4 Copies  
Fee Lease - 3 Copies

☒ AMENDED REPORT

WELL LOCATION AND ACREAGE DEDICATION PLAT

Revise Elev. 3-23-95

API Number <u>30-045-29273</u>	Pool Code 72319	Pool Name Blanco Mesaverde
Property Code <u>529</u>	Property Name FLORANCE D LS	Well Number # 4R
OGRID No. 000778	Operator Name AMOCO PRODUCTION COMPANY	Elevation 6732

10 Surface Location

UL or lot no. G	Section 20	Township 27 N	Range 8 W	Lot Ida	Feet from the 1880	North/South line NORTH	Feet from the 1780	East/West line EAST	County SAN JUAN
--------------------	---------------	------------------	--------------	---------	-----------------------	---------------------------	-----------------------	------------------------	--------------------

11 Bottom Hole Location If Different From Surface

UL or lot no.	Section	Township	Range	Lot Ida	Feet from the	North/South line	Feet from the	East/West line	County
---------------	---------	----------	-------	---------	---------------	------------------	---------------	----------------	--------

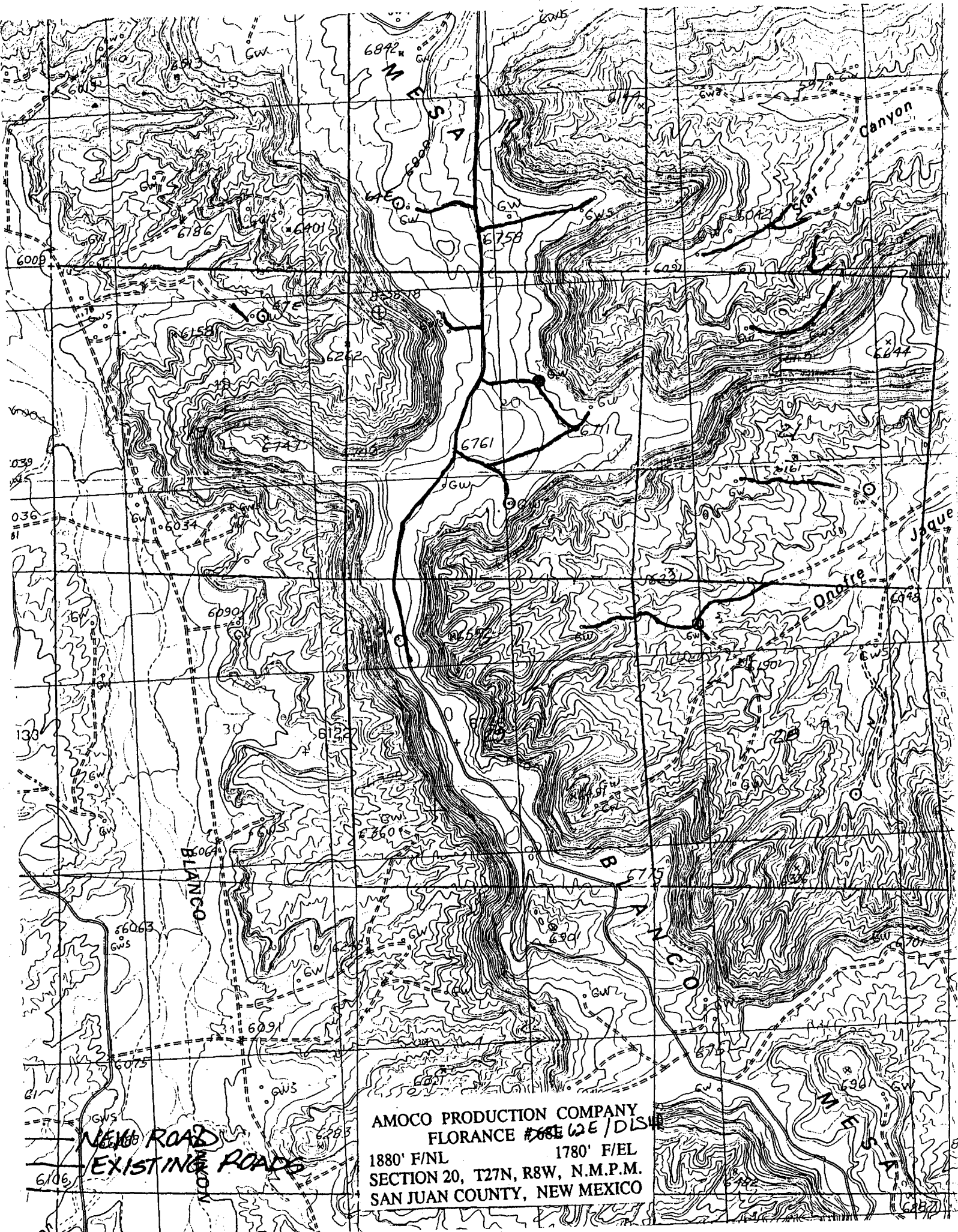
12 Dedicated Acres 320	13 Joint or Infill	14 Consolidation Code	15 Order No.
---------------------------	--------------------	-----------------------	--------------

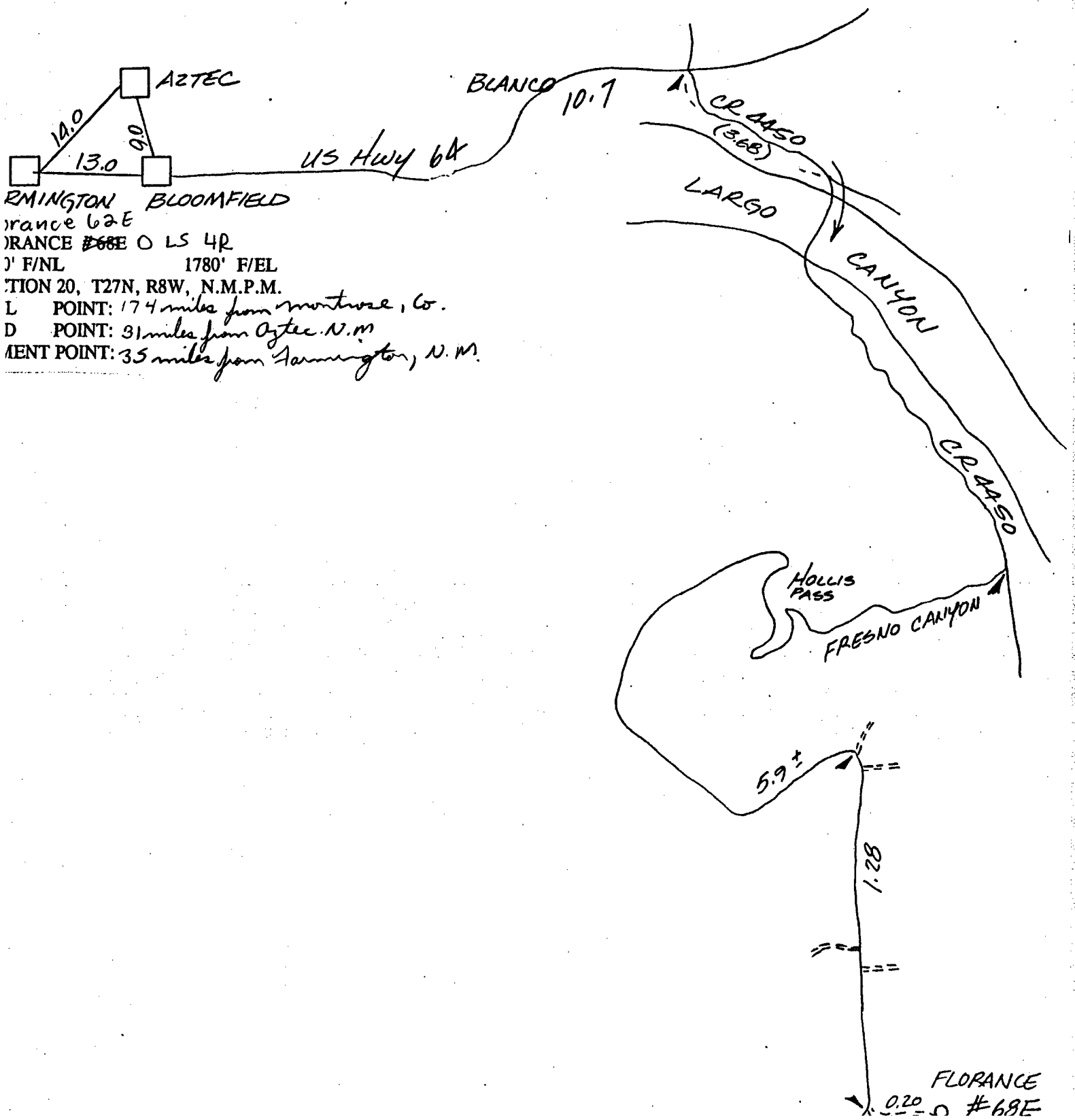
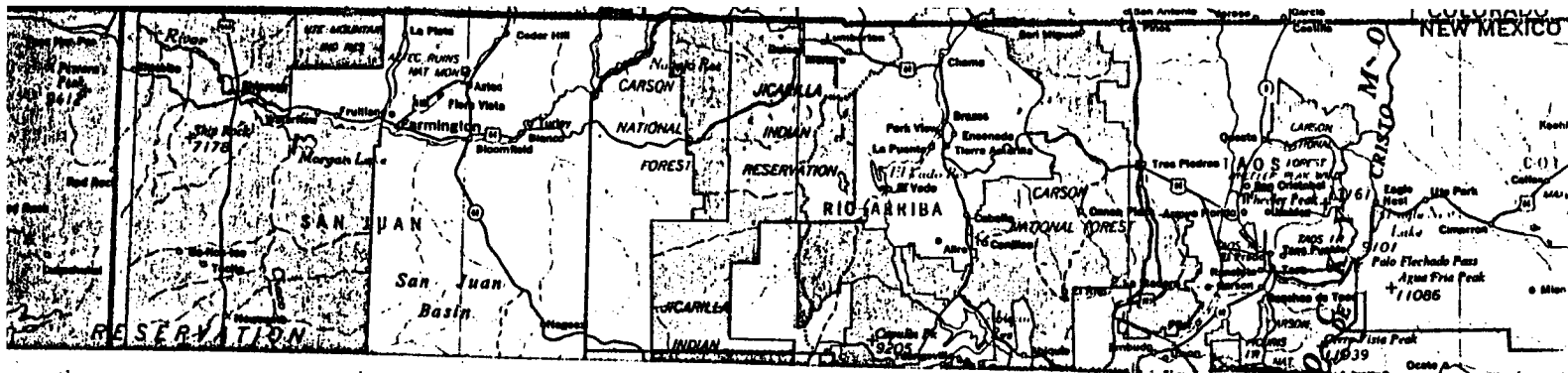
NO ALLOWABLE WILL BE ASSIGNED TO THIS COMPLETION UNTIL ALL INTERESTS HAVE BEEN CONSOLIDATED  
OR A NON-STANDARD UNIT HAS BEEN APPROVED BY THE DIVISION

16 	17 OPERATOR CERTIFICATION I hereby certify that the information contained herein is true and complete to the best of my knowledge and belief  <u>Patty Haeefe</u> Signature Patty Haeefe Printed Name Staff Assistant Title August 15, 1995 Date	
	18 SURVEYOR CERTIFICATION I hereby certify that the well location shown on this plat was plotted from field notes of actual surveys made by me or under my supervision, and that the same is true and correct to the best of my belief.  February 24, 1995 Date of Survey Signature and Seal of Professional Approver:  7016 Certificate Number	

RECEIVED  
AUG 6 1995  
OIL CON. DIV.  
DIST. 3

BLM RECORD





RMINGTON BLOOMFIELD  
 orance 62E  
 ORANCE 68E OLS 4R  
 0' F/NL 1780' F/EL  
 TION 20, T27N, R8W, N.M.P.M.  
 L POINT: 174 miles from Montrose, Co.  
 D POINT: 31 miles from Aztec, N.M.  
 AMENT POINT: 35 miles from Farmington, N.M.