

UNITED STATES
DEPARTMENT OF THE INTERIOR
BUREAU OF LAND MANAGEMENT

2002 SEP 10 PM 1:48

5. LEASE DESIGNATION AND SERIAL NO.

SF-078772

6. IF INDIAN, ALLOTTEE OR TRIBE NAME

7. UNIT AGREEMENT NAME

Rosa Unit

8. FARM OR LEASE NAME, WELL NO.

242A

9. API WELL NO.

30 045 31888

10. FIELD AND POOL OR WILDCAT

Basin Fruitland Coal

11. SEC. T., R., M., OR BLK.
AND SURVEY OR AREA

6 Sec. 33, T32N, R6W

12. COUNTY OR PARISH

San Juan

13. STATE

NM

APPLICATION FOR PERMIT TO DRILL, DEEPEN, OR PLUG BACK

1a. TYPE OF WORK

DRILL ☒DEEPEN ☐

1b. TYPE OF WELL

OIL
WELL ☐GAS
WELL ☒OTHER ☐SINGLE
ZONE ☒MULTIPLE
ZONE ☐

2. NAME OF OPERATOR

Williams Production Company, LLC

3. ADDRESS OF OPERATOR

P.O. Box 316 - Ignacio, CO 81137 - (970) 563-3308

4. LOCATION OF WELL (Report location clearly and in accordance with any State requirements.)*

At Surface G 1965' FNL and 2155' FEL

At proposed Prod. Zone

F-E From 1850' FNL & 2610' FWL to 1325' FNL & 10' FWL Horizontal

14. DISTANCE IN MILES AND DIRECTION FROM NEAREST TOWN OR POST OFFICE*

27 miles NE of Blanco, NM

15. DISTANCE FROM PROPOSED* LOCATION TO NEAREST PROPERTY
OR LEASE LINE, FT. (Also to nearest drlg. unit line, if any)

540

16. NO. OF ACRES IN LEASE

2561.86

17. NO. OF ACRES ASSIGNED TO THIS WELL

320 W/2

18. DISTANCE FROM PROPOSED LOCATION* TO NEAREST WELL,
DRILLING, COMPLETED, OR APPLIED FOR ON THIS LEASE, FT.

200

19. PROPOSED DEPTH

5900' (measured depth)

20. ROTARY OR CABLE TOOLS

Rotary

21. ELEVATIONS (Show whether DF, RT, GR, etc.)

6384'

22. APPROX. DATE WORK WILL START*

October 1, 2003

23. PROPOSED CASING AND CEMENTING PROGRAM

SIZE OF HOLE	SIZE OF CASING	WEIGHT/FOOT	SETTING DEPTH	QUANTITY OF CEMENT
12-1/4"	9-5/8"	36.0#	+/- 300'	~208 cu.ft. Type III with 2% CaCl ₂
8-3/4"	7"	20.0#	+/- 3011'	~627 cu.ft. 65/35 poz & ~139 cu.ft. Type
6-1/4"	4-1/2" perf	10.5#	+/- 2400' - 5900'	Open hole completion - no cement

Williams Production Company proposes to drill a horizontal well to develop the Fruitland Coal formation at the above described location in accordance with the attached drilling and surface use plans.

This location has been archaeologically surveyed by Independent Contract Archaeology. Copies of their report have been submitted directly to your office.

This APD also is serving as an application to obtain road and pipeline right-of-ways. This well will not require any new access road (see Pipeline & Well Plats #3 & #4). The well will be adjacent to the Rosa #355 well pad.

HOLD C104 FOR Directional Survey

IN ABOVE SPACE DESCRIBE PROPOSED PROGRAM : If proposal is to deepen or plug back, give data on present productive zone and proposed new productive zone.
If proposal is to drill or deepen directionally, give pertinent data on subsurface locations and measured and true vertical depths. Give blowout preventer program, if any.

24.

SIGNED

Larry Higgins

TITLE Larry Higgins, Drlg COM

DATE

9/10/2003

(This space for Federal or State office use)

PERMIT NO.

APPROVAL DATE

Application approval does not warrant or certify that the applicant holds legal or equitable title to those rights in the subject lease which would entitle the applicant to conduct operations thereon.

CONDITIONS OF APPROVAL David J. Mankiewicz

APPROVED BY

TITLE

DATE

SEP 30 2003

*See Instructions On Reverse Side

Title 18 U.S.C. Section 1001, makes it a crime for any person knowingly and willfully to make to any department or agency of the United States any false, fictitious or fraudulent statements or representations as to any matter within its jurisdiction.

This action is subject to technical and
procedural review pursuant to 43 CFR 3165.3
and appeal pursuant to 43 CFR 3165.4

NMOC

DRILLING OPERATIONS AUTHORIZED ARE
SUBJECT TO COMPLIANCE WITH ATTACHED
"GENERAL REQUIREMENTS".

District I
PO Box 1980, Hobbs, NM 88241-1980

District II
PO Drawer 00, Artesia, NM 88211-0719

District III
1000 Rio Brazos Rd., Aztec, NM 87410

District IV
PO Box 2088, Santa Fe, NM 87504-2088

State of New Mexico
Energy, Minerals & Natural Resources Department

OIL CONSERVATION DIVISION
PO Box 2088
Santa Fe, NM 87504-2088

Form C-102
Revised February 21, 1994
Instructions on back
Submit to Appropriate District Office
State Lease - 4 Copies
Fee Lease - 3 Copies

☐ AMENDED REPORT

WELL LOCATION AND ACREAGE DEDICATION PLAT

*API Number 30-045-31888	*Pool Code 71529	*Pool Name BASIN FRUITLAND COAL
*Property Code 17033	*Property Name ROSA UNIT	*Well Number 242A
*OGRID No. 120782	*Operator Name WILLIAMS PRODUCTION COMPANY	*Elevation 6384'

10 Surface Location

UL or lot no.	Section	Township	Range	Lot Idn	Feet from the	North/South line	Feet from the	East/West line	County
G	33	32N	6W		1965	NORTH	2155	EAST	SAN JUAN

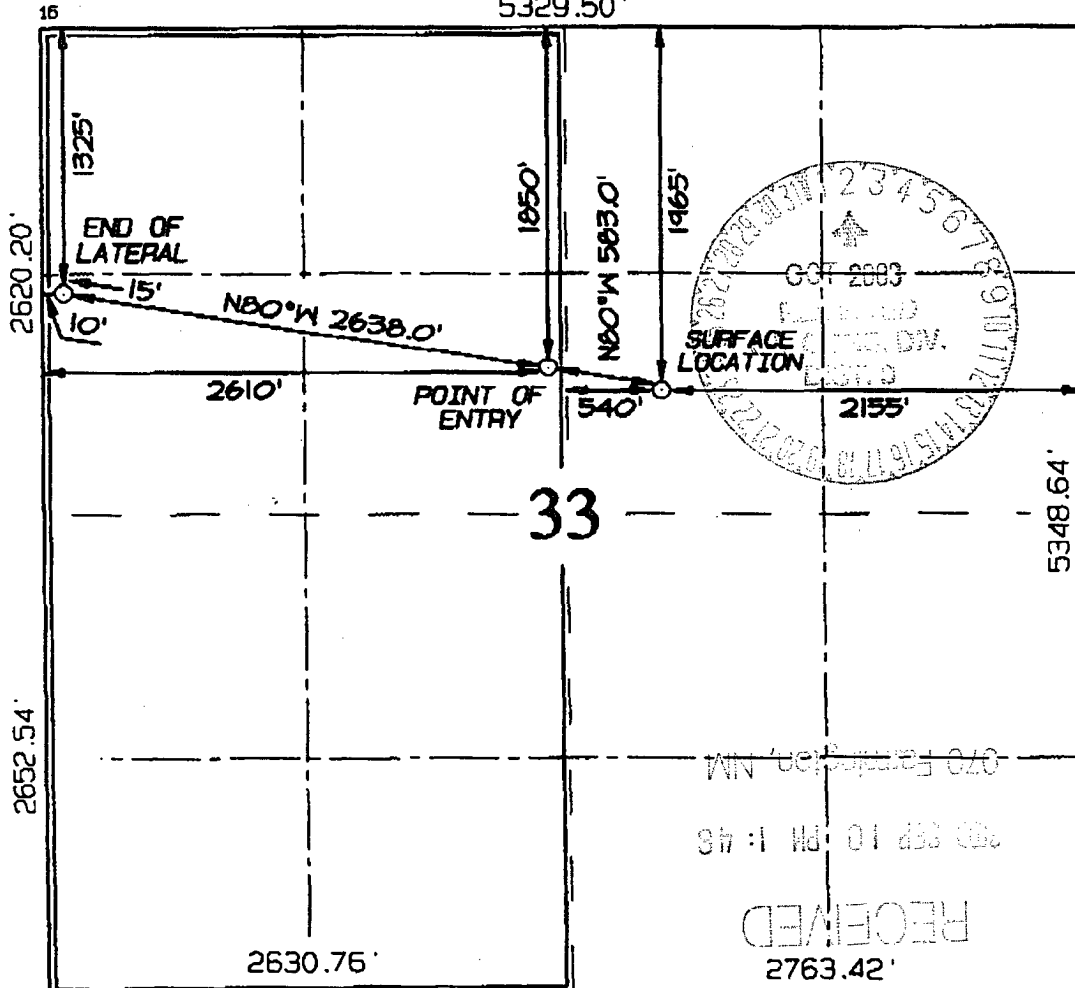
11 Bottom Hole Location If Different From Surface

UL or lot no.	Section	Township	Range	Lot Idn	Feet from the	North/South line	Feet from the	East/West line	County
E	33	32N	6W	1423 1325		NORTH	10 101	WEST	SAN JUAN

*Dedicated Acres 320.0 Acres - (W/2)	*Joint or Infill	*Consolidation Code	*Order No.
--	------------------	---------------------	------------

NO ALLOWABLE WILL BE ASSIGNED TO THIS COMPLETION UNTIL ALL INTERESTS HAVE BEEN CONSOLIDATED OR A NON-STANDARD UNIT HAS BEEN APPROVED BY THE DIVISION

5329.50'



17 OPERATOR CERTIFICATION

I hereby certify that the information contained herein is true and complete to the best of my knowledge and belief

Signature

LARRY HIGGINS

Printed Name

DRLE COM

Title

9-10-03

Date

18 SURVEYOR CERTIFICATION

I hereby certify that the well location shown on this plat was plotted from field notes of actual surveys made by me or under my supervision, and that the same is true and correct to the best of my belief.

Revised: SEPTEMBER 3, 2003

Date of Survey: JULY 18, 2003

Signature and Seal of Professional Surveyor



JASON C. EDWARDS

Certificate Number

15269

B. Drilling Fluid: Horizontal Coal section will be drilled with Fruitland Coal water + CaCl water.

C. BOP TESTING: While drill pipe is in use, the pipe rams and the blind rams will be function tested once each trip. The anticipated reservoir is expected to be less than 1300 psi, so the rams will be tested to 1500 psi. The drum brakes will be inspected and tested each tour. All tests, inspections and SPR's will be recorded in the tour book as to time and results.

III. MATERIALS

A. CASING PROGRAM:

<u>CASING TYPE</u>	<u>HOLE SIZE</u>	<u>DEPTH</u>	<u>CASING SIZE</u>	<u>WT. & GRADE</u>
Surface	12-1/4"	300'	9-5/8"	36# K-55
Intermediate	8-3/4"	3,011'	7"	20# K-55
Prod. Liner	6-1/4"	2,400-5,900'	4-1/2" perf'd	10.5# K-55

B. FLOAT EQUIPMENT:

1. SURFACE CASING: 9-5/8" notched regular pattern guide shoe.
2. INTERMEDIATE CASING: 7" cement nose guide shoe with a self- fill insert float. Place float one (1) joint above the shoe and one (1) centralizers, spaced every other joint, starting with the float joint. Place turbulent centralizers, at 120' intervals, starting at 1585' to the surface.
3. PRODUCTION LINER: 4-1/2" perforated liner with Guide Shoe on bottom.

C. CEMENTING:

(Note: Volumes may be adjusted onsite due to actual conditions)

1. SURFACE: Use 155 sx (208 cu.ft.) of "Type III" with 2% CaCl₂ and 1/4# of cello-flake/sk (Yield = 1.41 cu.ft./sk, Weight = 14.5 #/gal.). Use 100% excess to circulate the surface. WOC 12 hours. Test to 1500#.
2. INTERMEDIATE: Lead - 300 sx (627 cu.ft.) of "Type III" 65/35 poz with 8% gel, 1% CaCl₂ and 1/4# cello-flake/sk (Yield = 2.09 cu.ft./sk, Weight = 12.1 #/gal.). Tail - 100 sx (139 cu.ft.) of "Type III" with 1/4# cello-flake/sk, and 1% CaCl₂ (Yield = 1.4 cu.ft./sk, Weight = 14.5#/gal.). Use 100% excess in Lead Slurry to circulate to surface. No excess in Tail Slurry. Total volume = 766 cu.ft. Bump Plug to 1,500 psi. Notify engineering if cement is not circulated to surface.
3. PLUG-BACK SLURRY: (3,206 ft. – 2,300 ft. est.) Cement Slurry – 300 sks (379 cft – gauge hole) of "Type III + 0.1% CD-32 + ¼ lb/sk cello flake (Yield = 1.29 cft/ sk Weight = 15.0 ppg) Volume will be adjusted to caliper log + 20%.
4. PRODUCTION LINER: Open hole completion. No cement.

IV. RUNNING TUBING

1. Fruitland Coal: Run 2-3/8", 4.7#, J-55, EUE tubing with a SN (1.375" ID) on top of bottom joint. Land

Williams Production Company, LLC

Well Control Equipment Schematic for 2M Service

Attachment to Drilling Technical Program

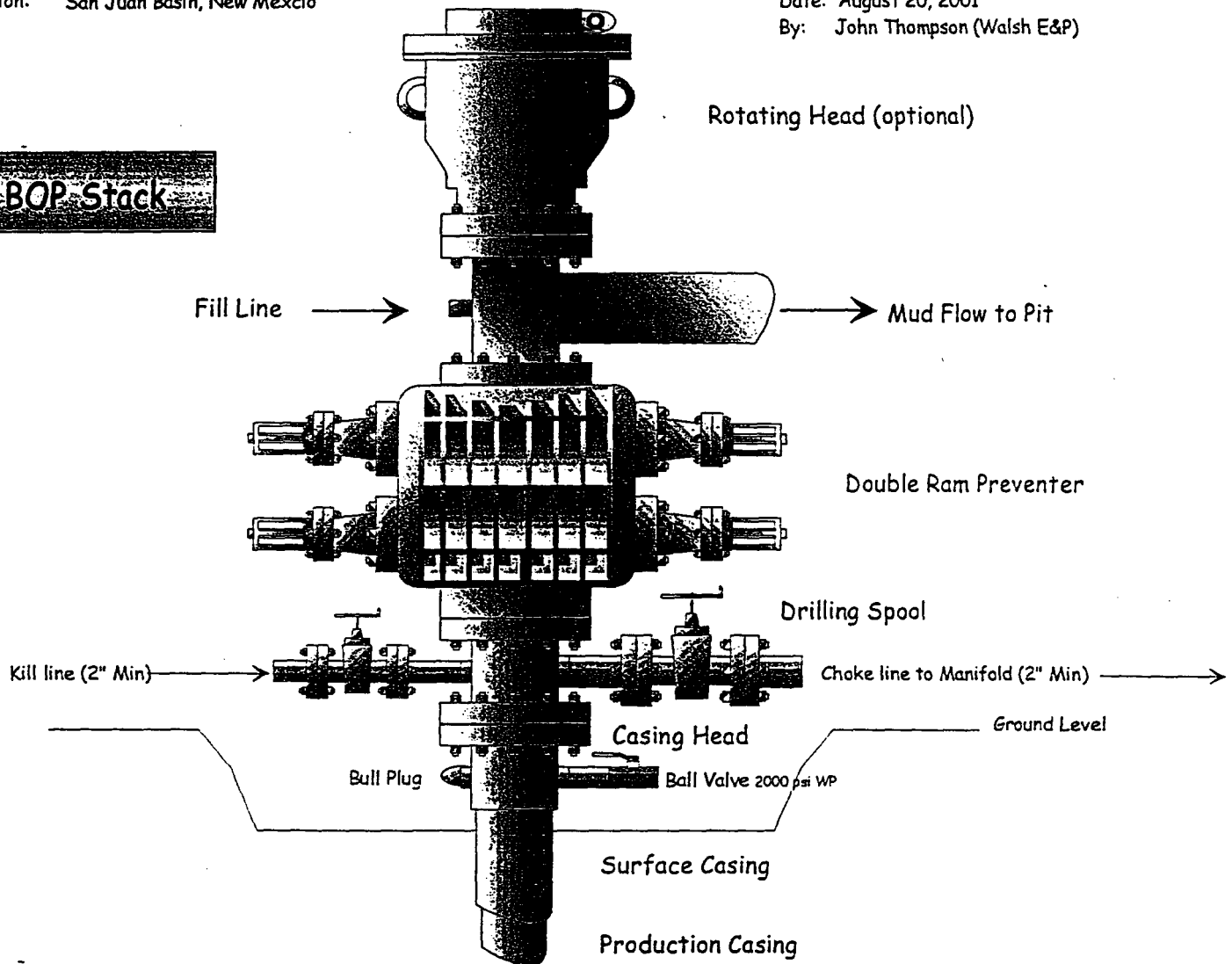
Typical BOP setup

Location: San Juan Basin, New Mexico

Date: August 20, 2001

By: John Thompson (Walsh E&P)

BOP Stack



Choke & Kill Manifold

