

DISTRICT I  
1627 N. French Dr., Hobbs, N.M. 88240

DISTRICT II  
1501 E. Grand Ave., Artesia, N.M. 88210

DISTRICT III  
1000 Rio Brazos Rd., Aztec, N.M. 87410

DISTRICT IV  
1220 South St. Francis Dr., Santa Fe, NM 87505

State of New Mexico  
Energy, Minerals & Natural Resources Department

OIL CONSERVATION DIVISION

1220 South St. Francis Dr.  
Santa Fe, NM 87505

Form C-1

Revised October 12, 200

Submit to Appropriate District Office

State Lease - 4 Copies

Fee Lease - 3 Copies

AS DRILLED

☐ AMENDED REPORT

RCVD OCT 11 '07

Oil Cons. Div.

DIST. 3

WELL LOCATION AND ACREAGE DEDICATION

1 API Number 30-045-33937		2 Pool Code 72319/71599		3 Pool Name Blanco Mesaverde/ Basin Dakota	
4 Property Code 7563		5 Property Name SUNRAY B			6 Well Number 2M
7 OGRID No. 14538		8 Operator Name BURLINGTON RESOURCES OIL & GAS COMPANY LP			9 Elevation 6635

10 Surface Location

UL or lot no.	Section	Township	Range	Lot Idn	Feet from the	North/South line	Feet from the	East/West line	County
E	1	30-N	10-W	9	1550	NORTH	255	WEST	SAN JUAN

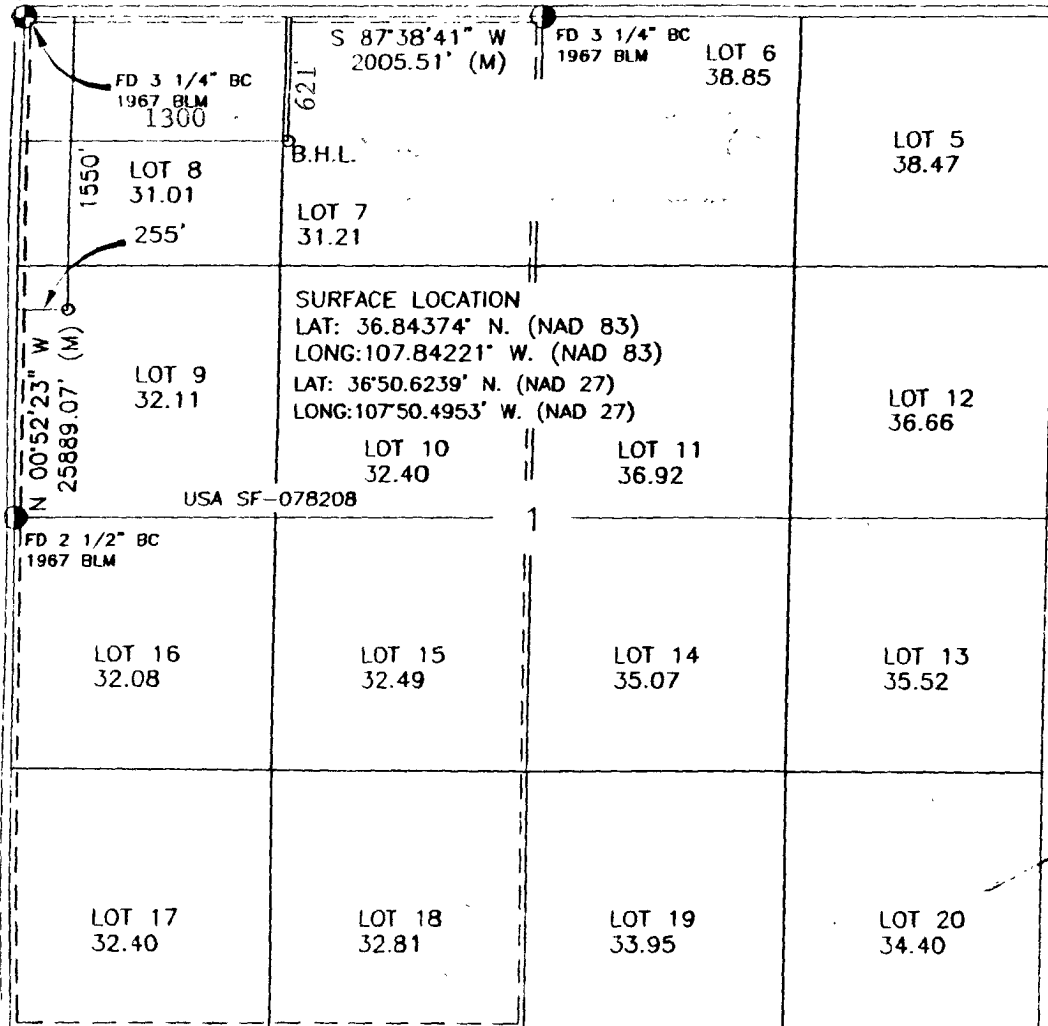
11 Bottom Hole Location If Different From Surface

UL or lot no.	Section	Township	Range	Lot Idn	Feet from the	North/South line	Feet from the	East/West line	County
C	1	30-N	10-W	7	621	NORTH	1300	WEST	SAN JUAN

12 Dedicated Acres E2-320-MV/DK MY 256.51 W/R/DK		13 Joint or Infill		14 Consolidation Code		15 Order No.	
--	--	--------------------	--	-----------------------	--	--------------	--

NO ALLOWABLE WILL BE ASSIGNED TO THIS COMPLETION UNTIL ALL INTERESTS HAVE BEEN CONSOLIDATED OR A NON-STANDARD UNIT HAS BEEN APPROVED BY THE DIVISION

16



17 OPERATOR CERTIFICATION

I hereby certify that the information contained herein is true and complete to the best of my knowledge and belief, and that this organization either owns a working interest or unleased mineral interest in the land including the proposed bottom hole location or has a right to drill this well at this location pursuant to a contract with an owner of such a mineral or working interest, or to a voluntary pooling agreement or a compulsory pooling order heretofore entered by the division.

Signature: Tracey N. Monroe 10/10/07  
Date

Printed Name: Tracey N. Monroe

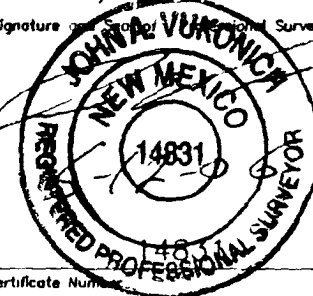
18 SURVEYOR CERTIFICATION

I hereby certify that the well location shown on this plat was plotted from field notes of actual surveys made by me or under my supervision, and that the same is true and correct to the best of my belief.

MARCH 16, 2006

Date of Survey

Signature of Registered Surveyor



Certificate Number

The above is true and correct to the best of my Knowledge