

RCVD OCT 9 '07

OIL CONS. DIV.

DIST. 3

Form C-101

May 27, 2004

## District I

1625 N. French Dr., Hobbs, NM 88240

## District II

1301 W. Grand Avenue, Artesia, NM 88210

## District III

1000 Rio Brazos Road, Aztec, NM 87410

## District IV

1220 S. St. Francis Dr., Santa Fe, NM 87505

State of New Mexico  
Energy Minerals and Natural Resources

## Oil Conservation Division

1220 South St. Francis Dr.

Santa Fe, NM 87505

Submit to appropriate District Office

RCVD OCT 15 '07

☐ AMENDED REPORT

OIL CONS. DIV.

## APPLICATION FOR PERMIT TO DRILL, RE-ENTER, DEEPEN, PLUGBACK, OR ADD A ZONE

Operator Name and Address Holcomb Oil and Gas Inc. P.O. Box 2058 Farmington, NM 87499		GRID Number 010605
Property Code 36685	Property Name Jacque	API Number 30-045-34463
Proposed Pool 1 Basin Fruitland Coal		Proposed Pool 2

## Surface Location

UL or lot no	Section	Township	Range	Lot Idn	Feet from the	North/South line	Feet from the	East/West line	County
1	27	29-N	11-W		1600	South	810	East	San Juan

## Proposed Bottom Hole Location If Different From Surface

UL or lot no	Section	Township	Range	Lot Idn	Feet from the	North/South line	Feet from the	East/West line	County
--------------	---------	----------	-------	---------	---------------	------------------	---------------	----------------	--------

## Additional Well Information

Work Type Code N	Well Type Code G	Cable/Rotary R	Lease Type Code P	Ground Level Elevation 5575
Multiple No	Proposed Depth 1850'	Formation Fruitland Coal	Contractor Scorpion Drilling	Spud Date
Depth to Groundwater Less than 100' ~ 42'		Distance from nearest fresh water well Greater than 1000' 600'		Distance from nearest surface water Greater than 1000'
Pit Liner Synthetic <input checked="" type="checkbox"/> mils thick Clay <input type="checkbox"/> Pit Volume _____ bbls Drilling Method Closed-Loop System <input type="checkbox"/> Fresh Water <input checked="" type="checkbox"/> Brine <input type="checkbox"/> Diesel/Oil-based <input type="checkbox"/> Gas/Air <input type="checkbox"/>				

## Proposed Casing and Cement Program

Hole Size	Casing Size	Casing weight/foot	Setting Depth	Sacks of Cement	Estimated TOC
8 3/4"	7"	20 #/ft.	150'	85	Surface
6 1/4"	4 1/2"	10.5 #/ft.	1850'	318	Surface

**22** Describe the proposed program. If this application is to DEEPEN or PLUG BACK, give the data on the present productive zone and proposed new productive zone. Describe the blowout prevention program, if any. Use additional sheets if necessary.

Holcomb Oil and Gas, Inc. proposes to drill a vertical well at the above listed location and to test the Fruitland Coal Formation. An 8 3/4" surface hole will be drilled to approx. 150' with spud mud. 7", 20# Casing will be set and cemented to surface with 85sx of Type V. w/.25#/sack Cello Flake plus 2% CaCL (350 excess). A 2000# rated double ran or annular BOP will be installed and pressure tested to 600psi. A 6 1/4" hole will be drilled using a freshwater-polymer mud system to approx. 1850'. 4 1/2", 10.5# casing will be set and cemented to surface with 243sx(500.6cuft.) of Type V. cement with 2% SMS+.25lbs./sack Cello Flake 3lb./sack Gilsonite mixed to 12.5ppg followed by 75sx(90cubic feet) standard Type V. Cement w/ 2% CaCL and .25#/sack Cello Flake and 3lbs/sack Gilsonite mixed to 15.5ppg. Casehole Spectral Density Log, Dual Spaced Neutron will be run from TD to the surface casing shoe. Deviation surveys will be run every 500'. The e/2 of sec.27(320 acres) is dedicated to this well. Formation Tops:0A-1376', Fruitland-1380'

**23** I hereby certify that the information given above is true and complete to the best of my knowledge and belief. I further certify that the drilling pit will be constructed according to NMOC guidelines ☒, a general permit ☐, or an (attached) alternative OCD-approved plan ☐.

Signature.

Printed name

Title

E-mail Address w.jholcomb@qwest.net

Date.

Phone. 505-326-0550

Approved by

Title

Approval Date

Expiration Date

Conditions of Approval Attached ☐

## OIL CONSERVATION DIVISION

Deputy Oil &amp; Gas Inspector,

District #3

OCT 18 2007

to

DISTRICT I  
1625 N. French Dr., Hobbs, N.M. 88240

DISTRICT II  
1301 W. Grand Ave., Artesia, N.M. 88210

DISTRICT III  
1000 Rio Brazos Rd., Aztec, N.M. 87410

DISTRICT IV  
1220 South St. Francis Dr., Santa Fe, NM 87505

State of New Mexico  
Energy, Minerals & Natural Resources Department

OIL CONSERVATION DIVISION

1220 South St. Francis Dr.  
Santa Fe, NM 87505

Form C-102

Revised October 12, 2005

Submit to Appropriate District Office

State Lease - 4 Copies

Fee Lease - 3 Copies

☐ AMENDED REPORT

WELL LOCATION AND ACREAGE DEDICATION PLAT

<sup>1</sup> API Number 30-045-34403	<sup>2</sup> Pool Code 71629	<sup>3</sup> Pool Name Basin Fruitland Coal
<sup>4</sup> Property Code	<sup>5</sup> Property Name JACQUE	<sup>6</sup> Well Number 1
<sup>7</sup> OGRID No. 010605	<sup>8</sup> Operator Name HOLCOMB OIL AND GAS INC.	<sup>9</sup> Elevation 5575

<sup>10</sup> Surface Location

UL or lot no.	Section	Township	Range	Lot Idn	Feet from the	North/South line	Feet from the	East/West line	County
1	27	29-N	11-W		1600	SOUTH	810	EAST	SAN JUAN

<sup>11</sup> Bottom Hole Location If Different From Surface

UL or lot no.	Section	Township	Range	Lot Idn	Feet from the	North/South line	Feet from the	East/West line	County

<sup>12</sup> Dedicated Acres 320 Acres E/2 Dedication	<sup>13</sup> Joint or Infill	<sup>14</sup> Consolidation Code	<sup>15</sup> Order No.
---	-------------------------------	----------------------------------	-------------------------

NO ALLOWABLE WILL BE ASSIGNED TO THIS COMPLETION UNTIL ALL INTERESTS HAVE BEEN CONSOLIDATED  
OR A NON-STANDARD UNIT HAS BEEN APPROVED BY THE DIVISION

16				CALC'D. CORNER BY DBL. PROP.	17
					OPERATOR CERTIFICATION
					I hereby certify that the information contained herein is true and complete to the best of my knowledge and belief, and that this organization either owns a working interest or unleased mineral interest in the land including the proposed bottom hole location or has a right to drill this well at this location pursuant to a contract with an owner of such a mineral or working interest, or to a voluntary pooling agreement or a compulsory pooling order heretofore entered by the division.
					<u>Jeffrey B. Holcomb</u> 10.8.07 Signature Date
					<u>Jeffrey B. Holcomb</u> Printed Name
					18 SURVEYOR CERTIFICATION
					I hereby certify that the well location shown on this plat was plotted from field notes of actual surveys made by me or under my supervision, and that the same is true and correct to the best of my belief.
					SEPTEMBER 27, 2007 Date of Survey
					Signature and Seal of Professional Surveyor: <u>[Signature]</u> 8894 02-07 REGISTERED PROFESSIONAL LAND SURVEYOR
					Certificate Number

27

LAT: 36.69417° N (NAD 83)  
LONG: 107.97276° W (NAD 83)

810'

1600'

QTR. CORNER  
3 1/4" BC.  
1999 B.L.M.

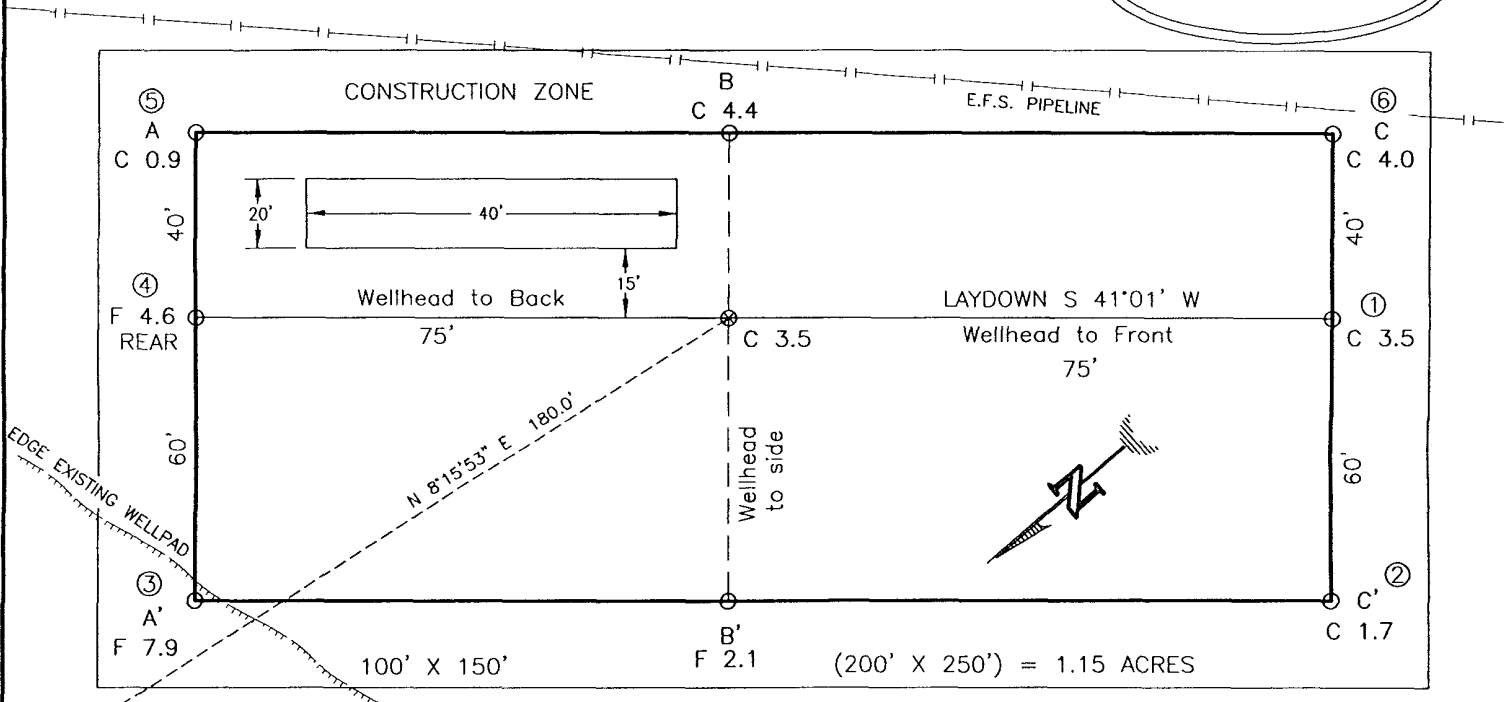
S 89-28-29 W  
2668.62' (M)

SEC. CORNER  
3 1/4" BC.  
1999 B.L.M.

N 00-24-12 W  
5241.01' (C)

HOLCOMB OIL & GAS INC.  
 JACQUE No. 1, 1600 FSL 810 FEL  
 SECTION 27, T29N, R11W, N.M.P.M., SAN JUAN COUNTY, N.M.  
 GROUND ELEVATION: 5575', DATE: SEPTEMBER 27, 2007

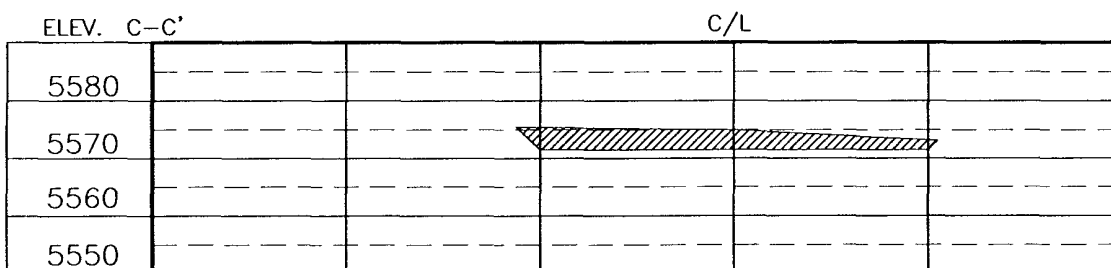
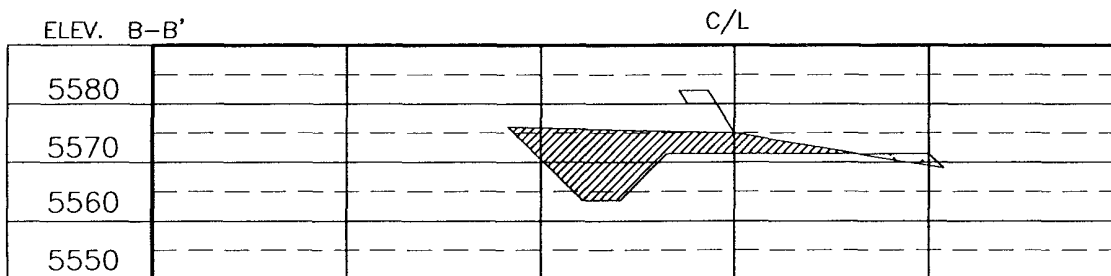
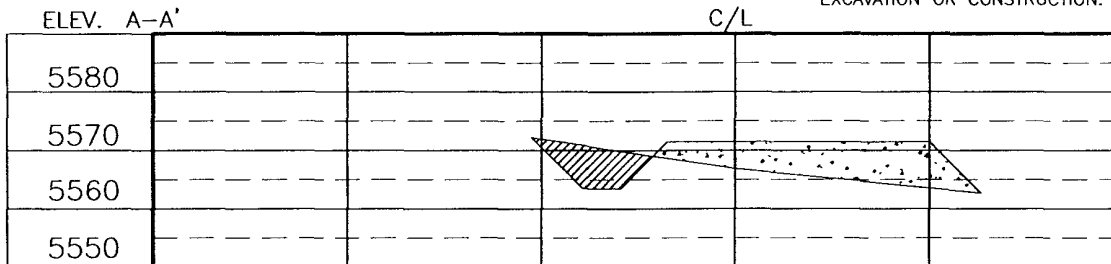
NAD 83  
 LAT. = 36.69417° N  
 LONG. = 107.97276° W



RESERVE PIT DIKE: TO BE 8' ABOVE DEEP SIDE (OVERFLOW - 3' WIDE AND 1' ABOVE SHALLOW SIDE).  
 BLOW PIT: OVERFLOW PIPE HALFWAY BETWEEN TOP AND BOTTOM AND TO EXTEND OVER PLASTIC LINER AND INTO BLOW PIT.

XTO-DAVIS GAS COM F No. 1R

NOTE: DAGGETT ENTERPRISES, INC. IS NOT LIABLE FOR UNDERGROUND UTILITIES OR PIPELINES. NEW MEXICO ONE CALL TO BE NOTIFIED 48 HOURS PRIOR TO EXCAVATION OR CONSTRUCTION.



NOTE: CONTRACTOR SHOULD CALL ONE-CALL FOR LOCATION OF ANY MARKED OR UNMARKED BURIED PIPELINES OR CABLES ON WELL PAD AND OR ACCESS ROAD AT LEAST TWO (2) WORKING DAYS PRIOR TO CONSTRUCTION.

REVISION	DATE	REVISION BY	DATE

Daggett Enterprises, Inc.  
 Surveying and Oil Field Services  
 P. O. Box 510 Farmington, NM 87499  
 Phone (505) 326-1772 • Fax (505) 326-6019  
 NEW MEXICO L.S. No. 8894  
 CADFILE: HOG009\_CFB  
 DATE: 09/28/07

DRAWN BY: G.V.  
 ROW# HOG009