

District II  
1301 W. Grand Avenue, Artesia, NM 88210

District III  
1000 Rio Brazos Rd., Aztec, NM 87410

District IV  
1220 S St Francis Dr., Santa Fe, NM 87505

OIL CONSERVATION DIVISION  
1220 South St. Francis Dr.  
Santa Fe, NM 87505

Submit to Appropriate District Office  
State Lease - 4 Copies  
Fee Lease - 3 Copies

RCVD OCT 26 '07

☐ AMENDED REPORT

000000

## WELL LOCATION AND ACREAGE DEDICATION PLAT

*API Number 30-039-29506		*Pool Code 71629	*Pool Name BASIN FRUITLAND COAL
*Property Code 17033	*Property Name ROSA UNIT		*Well Number 389
*OGRID No. 120782	*Operator Name WILLIAMS PRODUCTION COMPANY		*Elevation 6457'

<sup>10</sup> Surface Location

U. or lot no	Section	Township	Range	Lat. Idn	Feet from the	North/South line	Feet from the	East/West line	County
G	7	31N	4W		2460	NORTH	2330	EAST	RIO ARRIBA

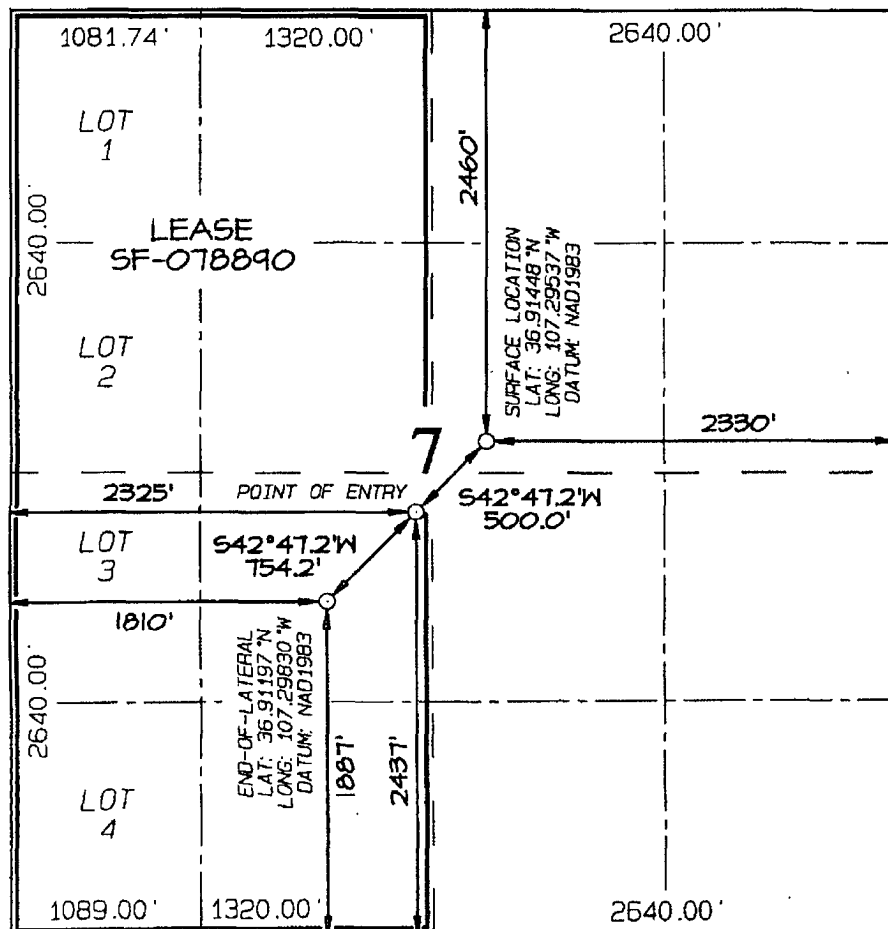
<sup>11</sup>Bottom Hole Location If Different From Surface

UL or lot no.	Section	Township	Range	Lot Idn	Feet from the	North/South line	Feet from the	East/West line	County
K	7	31N	4W		1887	SOUTH	1810	WEST	RIO ARRIBA

<sup>12</sup> Dedicated Acres	<sup>13</sup> Joint or Infill	<sup>14</sup> Consolidation Code	<sup>15</sup> Order No.
291.56 Acres - (W/2)			

NO ALLOWABLE WILL BE ASSIGNED TO THIS COMPLETION UNTIL ALL INTERESTS HAVE BEEN CONSOLIDATED OR A NON-STANDARD UNIT HAS BEEN APPROVED BY THE DIVISION

16



### 17 OPERATOR CERTIFICATION

I hereby certify that the information contained herein is true and complete to the best of my knowledge and belief, and that this organization either owns a working interest or unleased mineral interest in the land including the proposed bottom-hole location or has a right to drill this well at this location pursuant to a contract with an owner of such a mineral or working interest, or to a voluntary pooling agreement or a compulsory pooling order heretofore entered by the division.

Tracy Ross 10-25-07  
Signature Date

Signature Tracy Ross  
Printed Name

## 18 SURVEYOR CERTIFICATION

I hereby certify that the well location shown on this plat was plotted from field notes of actual surveys made by me or under my supervision, and that the same is true and correct to the best of my belief.

Date of Survey: JULY 22, 2004

Signature and Seal of Professional Surveyor



JASON C. EDWARDS  
Certificate Number 15269