

AS DRILLED

District I
1625 N. French Dr., Hobbs, NM 88240
District II
1301 W. Grand Avenue, Artesia, NM 88210
District III
1000 Rio Brazos Rd., Aztec, NM 87410
District IV
1220 S. St. Francis Dr., Santa Fe, NM 87505

State of New Mexico
Energy, Minerals & Natural Resources Department
OIL CONSERVATION DIVISION
1220 South St. Francis Dr.
Santa Fe, NM 87505

Form C-102
Revised October 12, 2005
Submit to Appropriate District Office
State Lease - 4 Copies
Fee Lease - 3 Copies

☒ AMENDED REPORT

WELL LOCATION AND ACREAGE DEDICATION PLAT

'API Number 30-039-29790	'Pool Code 71629	'Pool Name Basin Fruitland Coal
'Property Code	'Property Name San Juan 32-5 Unit Com	'Well Number 114
'OGRID No. 162928	'Operator Name Energen Resources Corporation	'Elevation 6472'

10 Surface Location

UL or lot no.	Section	Township	Range	Lot Idn	Feet from the	North/South line	Feet from the	East/West line	County
E	24	32N	6W		1345	North	225	West	Rio Arriba

11 Bottom Hole Location If Different From Surface

UL or lot no.	Section	Township	Range	Lot Idn	Feet from the	North/South line	Feet from the	East/West line	County
K	14	32N	6W		LL: 1315 UL: 1636	South	LL: 2257 UL: 1373	West	San Juan

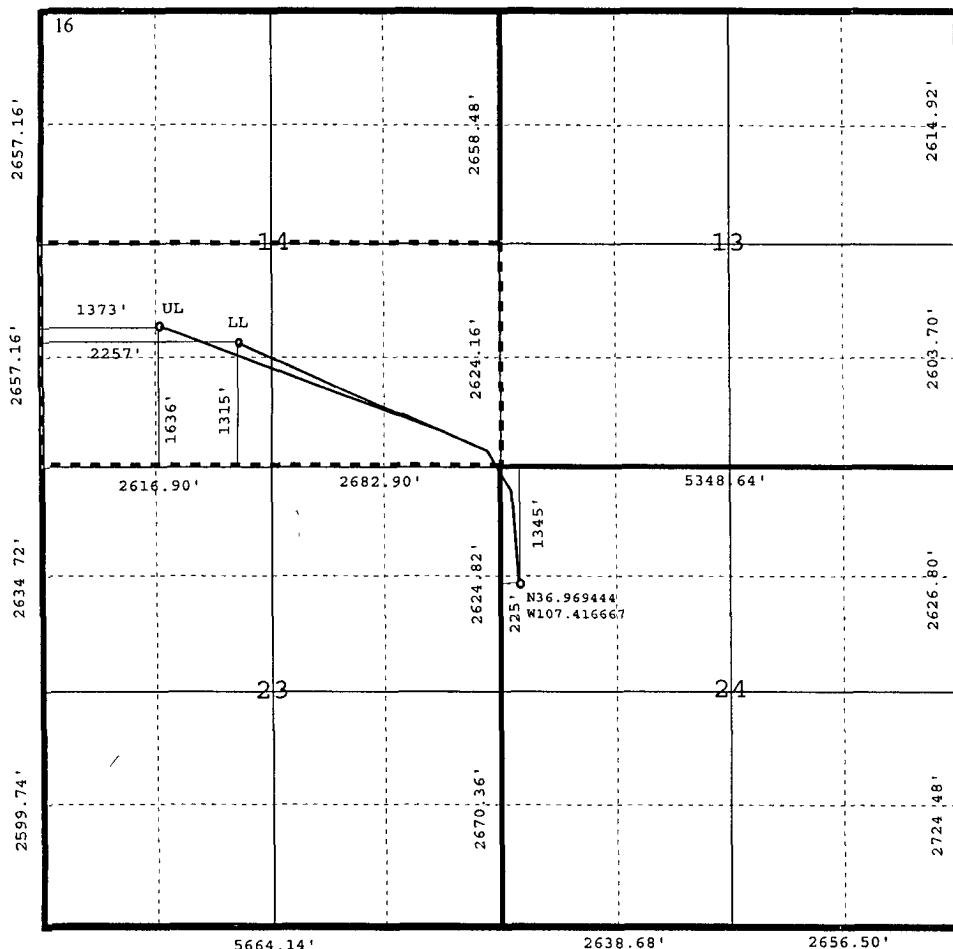
'Dedicated Acres	'Joint or Infill	'Consolidation Code	'Order No.
S/2			

RCVD OCT 15 '07
OIL CONS DIV

DIST. 3

No allowable will be assigned to this completion until all interests have been consolidated or a non-standard unit has been approved by the division.

2652.54' 2663.10' 5296.50'



17 OPERATOR CERTIFICATION

I hereby certify that the information contained herein is true and complete to the best of my knowledge and belief, and that this organization either owns a working interest or unleased mineral interest in the land including the proposed bottom hole location or has a right to drill this well at this location pursuant to a contract with an owner of such a mineral or working interest, or to a voluntary pooling agreement or a compulsory pooling order heretofore entered by the division.

Signature: Nathan Smith Date: 10/11/07

Printed Name

18 SURVEYOR CERTIFICATION

I hereby certify that the well location shown on this plat was plotted from field notes of actual surveys made by me or under my supervision, and that the same is true and correct to the best of my belief.

September 27, 2004

Date of Survey

Signature and Seal of Professional Surveyor.

Original survey conducted and recorded by Jason C. Edwards

15269

Certificate Number