

District I
1625 N French Dr., Hobbs, NM 88240

District II
1301 W. Grand Avenue, Artesia, NM 88210

District III
1000 Rio Brazos Rd., Aztec, NM 87410

District IV
1220 S. St. Francis Dr., Santa Fe, NM 87505

State of New Mexico
Energy, Minerals & Natural Resources Department

OIL CONSERVATION DIVISION
1220 South St. Francis Dr.
Santa Fe, NM 87505

Form C-102

Revised October 12, 2005

Instructions on back

Submit to Appropriate District Office

State Lease - 4 Copies

Fee Lease - 3 Copies

☒ AMENDED REPORT

RCVD NOV 13 '07

WELL LOCATION AND ACREAGE DEDICATION PLAT

*API Number 30-039-30244		*Pool Code 72319 / 71599	*Pool Name BLANCO MESAVERDE / BASIN DAKOTA
*Property Code 17033	*Property Name ROSA UNIT		*Well Number DICT 3 2283
*OGRID No. 120782	*Operator Name WILLIAMS PRODUCTION COMPANY		*Elevation 6465'

¹⁰ Surface Location

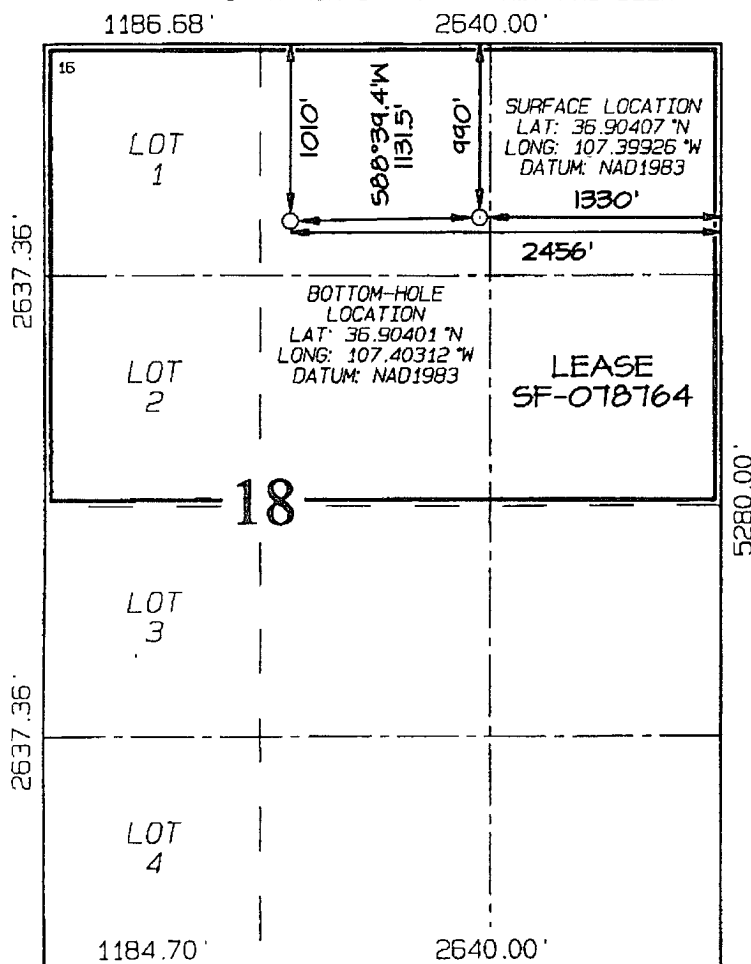
UL or lot no.	Section	Township	Range	Lot Idn	Feet from the	North/South line	Feet from the	East/West line	County
B	18	31N	5W		990	NORTH	1330	EAST	RIO ARriba

¹¹ Bottom Hole Location If Different From Surface

UL or lot no.	Section	Township	Range	Lot Idn	Feet from the	North/South line	Feet from the	East/West line	County
B	18	31N	5W		1010	NORTH	2456	EAST	RIO ARriba

¹² Dedicated Acres 231.89 Acres - (N/2)	¹³ Joint or Infill	¹⁴ Consolidation Code	¹⁵ Order No.
---	-------------------------------	----------------------------------	-------------------------

NO ALLOWABLE WILL BE ASSIGNED TO THIS COMPLETION UNTIL ALL INTERESTS HAVE BEEN CONSOLIDATED
OR A NON-STANDARD UNIT HAS BEEN APPROVED BY THE DIVISION



¹⁷ OPERATOR CERTIFICATION

I hereby certify that the information contained herein is true and complete to the best of my knowledge and belief, and that this organization either owns a working interest or unleased mineral interest in the land including the proposed bottom-hole location or has a right to drill this well at this location pursuant to a contract with an owner of such a mineral or working interest, or to a voluntary pooling agreement or a compulsory pooling order heretofore entered by the division.

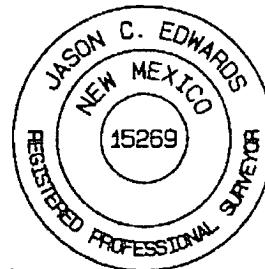
Tracy Ross 11-13-07
Signature Date
Tracy Ross
Printed Name

¹⁸ SURVEYOR CERTIFICATION

I hereby certify that the well location shown on this plat was plotted from field notes of actual surveys made by me or under my supervision, and that the same is true and correct to the best of my belief

Survey Date: DECEMBER 7, 2006

Signature and Seal of Professional Surveyor



JASON C. EDWARDS
Certificate Number 15269