

**UNITED STATES
DEPARTMENT OF THE INTERIOR
BUREAU OF LAND MANAGEMENT**

RCVD FEB 4 '08
OIL CONS. DIV.

Sundry Notices and Reports on Wells

DIST. 3

RECEIVED

JAN 28 2008

Bureau of Land Management
Farmington Field Office

1. **Type of Well**
GAS

2. **Name of Operator**

Burlington Resources Oil & Gas Company LP

3. **Address & Phone No. of Operator**

PO Box 4289, Farmington, NM 87499 (505) 326-9700

4. **Location of Well, Footage, Sec., T, R, M**
Sec., T--N, R--W, NMPM

Unit O (SWSE) 790' FSL & 1450' FEL, Sec. 27, T26N, R06W NMPM

5. **Lease Number**
SF-079266

6. **If Indian, All. or
Tribe Name**

7. **Unit Agreement Name**

8. **Well Name & Number**

Vaughn 24

9. **API Well No.**

30-039-20652

10. **Field and Pool**

PC/CH

11. **County and State**
Rio Arriba Co., NM

12. CHECK APPROPRIATE BOX TO INDICATE NATURE OF NOTICE, REPORT, OTHER DATA

Type of Submission

☒ Notice of Intent

☐ Subsequent Report

☐ Final Abandonment

Type of Action

☐ Abandonment

☐ Recompletion

☐ Plugging

☐ Casing Repair

☐ Altering Casing

☐ Change of Plans

☐ New Construction

☐ Non-Routine Fracturing

☐ Water Shut off

☐ Conversion to Injection

☒ Other P & A Chacra

13. Describe Proposed or Completed Operations

Burlington Resources requests to P & A the Chacra formation on the subject well per the attached procedure.

14. I hereby certify that the foregoing is true and correct.

Signed Tracey N. Monroe

Tracey N. Monroe Title Regulatory Technician Date 1/28/08

(This space for Federal or State Office use)

APPROVED BY Original Signed: Stephen Mason Title _____

Date

JAN 31 2008

CONDITION OF APPROVAL, if any:

Title 18 U.S.C. Section 1001, makes it a crime for any person knowingly and willfully to make any department or agency of the United States any false, fictitious or fraudulent statements or representations as to any matter within its jurisdiction

NMOCD

PLUG AND ABANDONMENT PROCEDURE

(Prepared by A-Plus)

Vaughn #24

South Blanco Pictured Cliffs & Otero Chacra Extension

790' FSL and 1450' FEL, Section 27, T26N, R6W, Rio Arriba County, New Mexico

API 30-039-20652 / Lat: 36° 27' 8" N / Long: 107° 27' 2" W

Note: All cement volumes use 100% excess outside pipe and 50' excess inside. The stabilizing wellbore fluid will be 8.3 ppg, sufficient to balance all exposed formation pressures. All cement will be ASTM Type III, mixed at 14.8 ppg with a 1.32 cf/sx yield,

1. Project will require a Pit Permit (C103) from the NMOCD.
2. Install and test rig anchors. Prepare waste fluid holding pit. Comply with all NMOCD, BLM and ConocoPhillips safety rules and regulations. Conduct safety meeting for all personnel on location. MOL and RU daylight pulling unit. NU relief line and blow well down; kill with water as necessary. ND wellhead and NU BOP and stripping head; test BOP.

Pictures Cliffs Casing Repair:

3. Rig up a wireline unit and run a gauge ring to 2570' or as deep as possible. Spot a sand plug from PBTD up to 2500'. Tag with tubing to confirm placement.
4. Load the PC casing with water and pressure test to 500 PSI, hold for 30 minutes. If the casing leaks then PU a packer and 1.25" workstring; isolate the casing leak(s). TOH with packer.
5. If the leak in the PC casing is fairly shallow (above 200'), then skip ahead to step #12 in this procedure. Once the PC casing is repaired, continue with plugging of the Chacra completion.

Chacra P&A Procedure:

6. Tally and prepare a 1.25" tubing workstring. Round-trip wireline gauge ring to 3400' in the Chacra casing.
7. **Plug #1 Ch (Chacra perforations and top; plug length: 3382' – 3000')**: RIH and set 2.875" wireline CIBP at 3382'. TIH with tubing and tag CIBP at 3382'. Load casing with water and circulate well clean. Pressure test casing to 500#. *If the casing does not test, then spot or tag subsequent plugs as appropriate.* Mix 10 sxs Type III cement and spot a balanced plug inside the casing above the CIBP to isolate the Chacra perforations. PUH with tubing to 2648'.
8. **Plug #2 Ch (Pictured Cliffs and Fruitland, Kirtland, Ojo Alamo tops; plug length: ^{2600'}2648' – ^{2048'}1950')**: Mix 19 sxs Type III cement and spot a balanced plug inside the casing above the CIBP to isolate the Pictured Cliffs through Ojo Alamo tops. TOH with tubing. WOC if necessary and tag cement.
9. ND the BOP and pick up on the Chacra 2.875" casing. Calculate the free point by stretch measurements. If the casing is free deeper than 1500', then jet cut the casing as deep as possible. If the casing is successfully cut and free, then NU a companion flange and NU the BOP on the casing head. Pull and LD the 2.875' Chacra casing.

1910'-1410'
casing

- 824 724
10. If the casing is not free below 1400', then set **Plug #3 (Nacimiento top, 1475' – 1375')**: TIH with tubing to 1475'. Mix 7 sxs Type III cement and spot a balanced plug inside the casing to cover the Nacimiento top. TOH with tubing. WOC if necessary and tag cement. If the PC casing has a leak, then this plug may be modified as appropriate.
 11. If the casing was not free below 1500' and the Nacimiento plug has been set, then jet cut the 2.875" Chacra casing as deep as possible. NU a companion flange and the BOP. Pull and LD the 2.875" Chacra casing. ND the BOP and companion flange.

Pictured Cliffs Casing:

12. NU the BOP on the PC casing. If there was not a casing leak, then TIH with workstring and clean out the sand plug on the PC perforations with air. Blow well clean.
13. If the PC casing does have a leak, then calculate the free point by stretch measurements.
14. If the PC casing leak is less than 200' deep and the pipe is free, then back off then 2.875" casing one joint deeper than the leak depth and pull the PC casing. Replace the bad joint(s) and then re-run the 2.875" casing. Screw onto the casing stub and re-set the wellhead slips. Then clean out the well with air to PBTD.
15. Blow the well until it is clean. Then land tubing.
16. ND BOP and NU the PC wellhead. RD and MOL.
17. If the PC casing leak is deeper than 200', call the Engineer to determine if the casing is repairable or the PC side of the well will be plugged.

Pictured Cliffs P&A:

- 1510
18. **Plug #1 PC (Pictured Cliffs and Fruitland, Kirtland, Ojo Alamo tops, 2500' – 1950')**: Mix 15 sxs Type III cement and spot a balanced plug inside the casing above the sand plug to isolate the Pictured Cliffs perforations and to cover the Fruitland, Kirtland and Ojo Alamo tops. TOH with tubing. WOC and tag cement.
 - 824 724
 19. **Plug #2 PC (Nacimiento top, 1475' – 1375')**: Load casing with water and circulate well clean. Pressure test casing to 500#. *If the casing does not test, then spot or tag subsequent plugs as appropriate.* TOH with tubing. Perforate 2 bi-wire holes at 1475'. RIH and set 2.875" wireline cement retainer at 1425'. TIH with tubing and sting into the CR. Establish rate into the squeeze holes. Mix 62 sxs Type III cement, squeeze 57 sxs outside the casing and spot 5 sxs inside to cover the Nacimiento top. TOH with tubing. WOC if necessary and tag cement.
 20. **Plug #3 PC (Surface casing, 196' – Surface)**: Perforate 2 bi-wire holes at 196' and then establish circulation to surface out the bradenhead valve. Circulate the BH annulus clean. Mix approximately 80 sxs Type III cement and pump down the 2.875" casing to circulate good cement out the bradenhead valve. Shut in well and WOC.
 21. ND BOP and cut off wellhead below surface casing flange. Install P&A marker with cement to comply with regulations. RD, MOL and cut off anchors. Restore location per BLM stipulations.

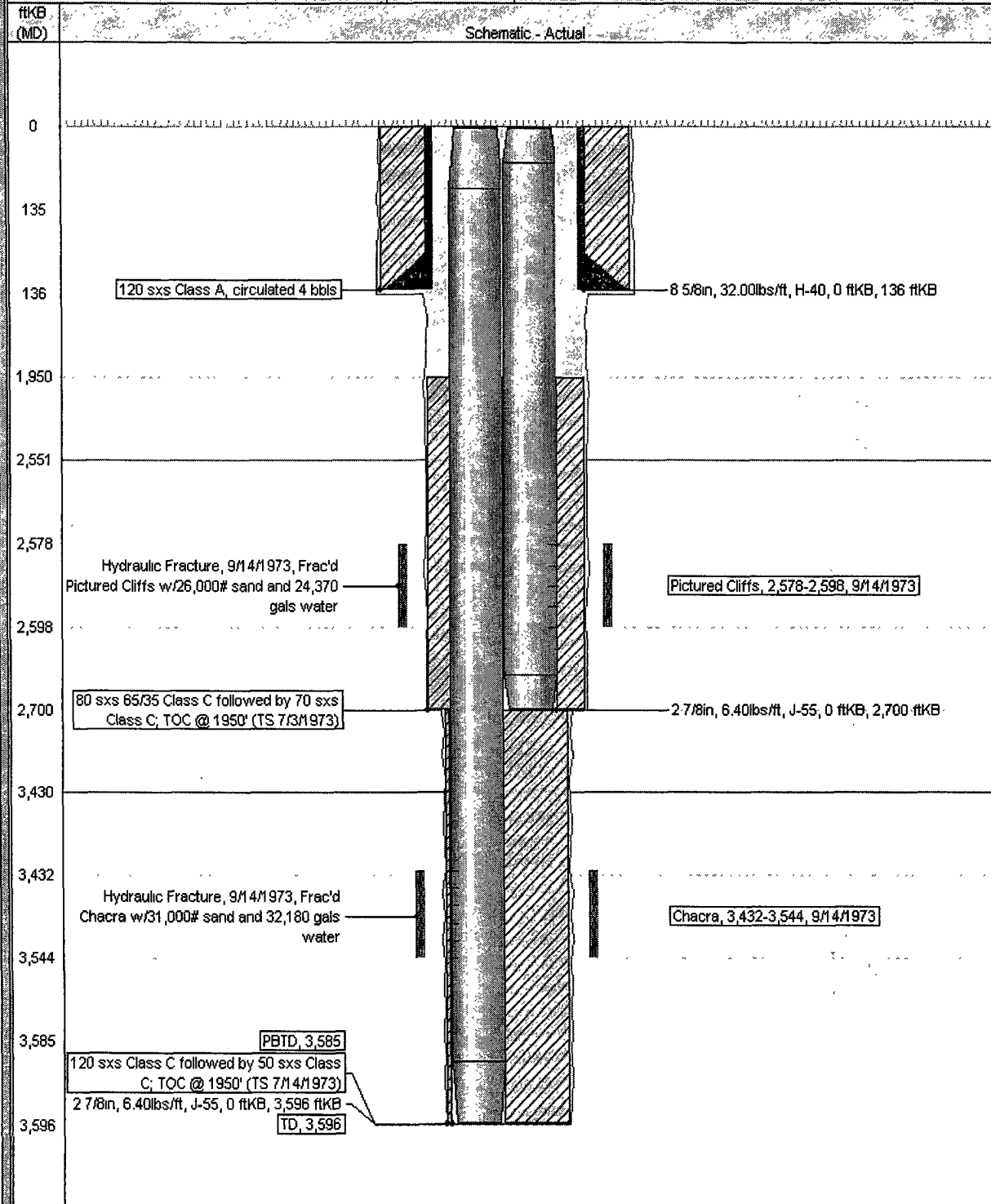
Current Schematic

ConocoPhillips

Well Name: VAUGHN #24

API/UVI 3003920652	Surface Legal Location NMPM,027-026N-006W	Field Name BLANCO P.C. SOUTH GAS	License No.	State/Province NEW MEXICO	Well Configuration Type	Edit
Ground Elevation (ft) 6,323.00	Original KB Elevation (ft) 6,324.00	KB-Grout Distance (ft) 1.00	KB-Casing Flange Distance (ft)	KB-Tubing Hanger Distance (ft)		

Well Config: - VAUGHN 24, 1/14/2008 10:38:09 AM



Pertinent Data Sheet

ConocoPhillips

Well Name: VAUGHN #24

API/UNH 3003920652	Surface Legal Location NMPM,027-026N-006W	Field Name BLANCO P.C. SOUTH GAS	License No.	State/Province NEW MEXICO	Well Configuration Type	Edit
Ground Elevation (ft) 6,323.00	Original KB Elevation (ft) 6,324.00	KB-Ground Distance (ft) 1.00	KB-Casing Flange Distance (ft)	KB-Tubing Hanger Distance (ft)		

Well Attributes			Edit
Orig Spud Date 6/27/1973	Latitude (DMS) 36° 27' 8.28" N	Longitude (DMS) 107° 27' 2.232" W	

PBTDS		Edit
Depth (ft) 3,585.0	Comment	

Formations		Edit
Formation Name Pictured Cliffs Chacra	Final Top MD (ft) 2,551.0 3,430.0	

Casing Strings				
Casing Description	Run Date	Set Depth (ft)	Comment	Edit
Surface	6/27/1973	136.1		

Item Description	OD (in)	ID (in)	WT (lb/ft)	Grade	JS	Lat (ft)	Edit
Casing Joints	8 5/8	7.921	32.00	H-40		4	135.11
Shoe	8 5/8	7.921				1	1.00

Casing Description Production PC	Rin Date 7/4/1972	Set Depth (ft) 2,700.0	Comment	
-------------------------------------	----------------------	---------------------------	---------	--

Item Description	OD (in)	ID (in)	WT (lb/ft)	Grade	JS	Lat (ft)	Edit
Casing Joints	2 7/8	2.441	6.40	J-55		89	2,700.00

Item Description	OD (in)	ID (in)	WT (lb/ft)	Grade	JS	Lat (ft)	Edit
Casing Joints	2 7/8	2.441	6.40	J-55		3,595.00	
Cement							Edit

Description	Start Date	End Date	Comment
Surface Casing Cement	6/27/1973		120 sxs Class A; circulated 4 bbls
Production Casing Cement	7/3/1973		80 sxs 65/35 Class C followed by 70 sxs Class C; TOC @ 1950' (TS 7/3/1973)
Production Casing Cement	7/4/1973		120 sxs Class C followed by 50 sxs Class C; TOC @ 1950' (TS 7/4/1973)

Tubing Description	Rin Date	Set Depth (ft)	Comment	Edit

Perforations					Edit
Date	Top (ft)	Fin (ft)	Zone	Comment	
9/14/1973	2 578.0	2 598.0	PICTURED CLIFFS, VAUGHN	Perfed Pictured Cliffs @ 2578-2598'	

Stimulations & Treatments		Edit
Hydraulic Fracture on 9/14/1973 00:00		

Type	Zone	Comment
Hydraulic Fracture	PICTURED CLIFFS, VAUGHN 24	Frac'd Pictured Cliffs w/26,000# sand and 24,370 gals water

Hydraulic Fracture on 9/14/1973 00:00		Edit
Type	Zone	Comment
Hydraulic Fracture	CHACRA, VAUGHN 24	Frac'd Chacra w/31,000# sand and 32,180 gals water

Logs		Edit
Date	Type	

7/3/1973	Densilog
7/3/1973	Induction Electrolog
7/4/1973	Temperature Survey
9/14/1973	Gamma Ray

**UNITED STATES DEPARTMENT OF THE INTERIOR
BUREAU OF LAND MANAGEMENT
FARMINGTON DISTRICT OFFICE
1235 LA PLATA HIGHWAY
FARMINGTON, NEW MEXICO 87401**

Attachment to notice of
Intention to Abandon:

Re: Permanent Abandonment
Well: 24 Vaughn

CONDITIONS OF APPROVAL

1. Plugging operations authorized are subject to the attached "General Requirements for Permanent Abandonment of Wells on Federal and Indian Lease."

2. Farmington Office is to be notified at least 24 hours before the plugging operations commence (505) 599-8907.

3. The following modifications to your plugging program are to be made:

a) Place the Pictured Cliffs/Fruitland/Kirtland plug from 2600' - 2048'.

b) Place the Ojo Alamo plug from 1910' – 1810' inside and outside the 2 7/8" casing.

c) Place the Nacimiento plug from 824' – 724' inside and outside the 2 7/8" casing.

You are also required to place cement excesses per 4.2 and 4.4 of the attached General Requirements.

Office Hours: 7:45 a.m. to 4:30 p.m.