

UNITED STATES
DEPARTMENT OF THE INTERIOR
BUREAU OF LAND MANAGEMENT

APPLICATION FOR PERMIT TO DRILL OR REENTER

RECEIVED

FORM APPROVED
OMB No. 1004-0136
Expires January 31, 2004

DEC 31 2007

Bureau of Land Management
Farmington Field Office

Lease Serial No.

NMNM-099739

Age of Indian, Allottee or Tribe Name
Office

7. If Unit or CA Agreement, Name and No.

Federal 21-7-35

8. Lease Name and Well No

1

9. APN Well No.

80-043-21060

10. Field and Pool, or Exploratory

Basin Fruitland Coal

11. Sec., T., R., M., or Blk. and Survey or Area

B

Section 35, T21N, R7W

12. County or Parish

Sandoval

13. State

NM

1a. Type of Work: ☒ DRILL ☐ REENTER1b. Type of Well: ☐ Oil Well ☒ Gas Well ☐ Other ☒ Single Zone ☐ Multiple Zone

2. Name of Operator

SG Interests I, LTD c/o NIKA Energy Operating

3a. Address

P.O. Box 2677 Durango, CO 81302

3b. Phone No. (include area code)

(970) 259-2701

4. Location of Well (Report location clearly and in accordance with any State requirements. *)

At surface Lot B : 860' FNL & 1725' FEL

At proposed prod. zone

14. Distance in miles and direction from nearest town or post office*

approximately 28 miles southwest of Counselor, New Mexico

15. Distance from proposed*

location to nearest
property or lease line, ft.
(Also to nearest drg. unit line, if any)

860'

16. No. of Acres in lease

1,440.00

17. Spacing Unit dedicated to this well

E/2 320.00 acres

RCVD FEB 7 '08

18. Distance from proposed location*
to nearest well, drilling, completed,
applied for, on this lease, ft.

See attached map

19. Proposed Depth

approx. 1000'

20. BLM/BIA Bond No. on file

PIB0003277

OIL CONS. DIV.

21. Elevations (Show whether DF, KDB, RT, GL, etc.)

6,645 GR

22. Approximate date work will start*

as soon as permitted

23. Estimated duration

1 month

DIST. 3

24. Attachments

The following, completed in accordance with the requirements of Onshore Oil and Gas Order No.1, shall be attached to this form:

1. Well plat certified by a registered surveyor.

2. A Drilling Plan.

3. A Surface Use Plan (if the location is on National Forest System Lands, the
SUPO shall be filed with the appropriate Forest Service Office).4. Bond to cover the operations unless covered by an existing bond on file (see
Item 20 above).

5. Operator certification.

6. Such other site specific information and/or plans as may be required by the
authorized officer.

25. Signature

Name (Printed/Typed)

William Schwab III

Date

12/27/2007

Title

President NIKA Energy Operating/ Agent for SG Interests I, LTD

Approved by (Signature)

Name (Printed/Typed)

Office

FFO

Date

2/5/08

Application approval does not warrant or certify that the applicant holds legal or equitable title to those rights in the subject lease which would entitle the applicant to conduct
operations thereon.

Conditions of approval, if any, are attached.

Title 18 U.S.C. Section 1001 and Title 43 U.S.C. Section 1212, make it a crime for any person knowingly and willfully to make to any department or agency of the United
States any false, fictitious or fraudulent statements or representations as to any matter within its jurisdiction.

*(Instructions on reverse)

SG Interests I, LTD. proposes to drill a well to develop the Basin Fruitland Coal formation at the above described location in accordance with the attached
drilling and surface use plans.

The surface is under jurisdiction of the Bureau of Land Management, Farmington Field Office.

This location has been archaeologically surveyed by Aztec Archaeological Consultants. Copies of their report have been submitted directly to the BLM.

A new access road approximately 4059.06 feet in length would be required for this location.

This APD is also serving as an application for an on-lease pipeline tie of approximately 4,059.06 feet; to parallel the proposed access road

BLM'S APPROVAL OR ACCEPTANCE OF THIS
ACTION DOES NOT RELIEVE THE LESSEE AND
OPERATOR FROM OBTAINING ANY OTHER
AUTHORIZATION REQUIRED FOR OPERATIONS
ON FEDERAL AND INDIAN LANDS

FEB 07 2008

AV

NMOC

This action is subject to technical and
procedural review pursuant to 43 CFR 3165.3
and appeal pursuant to 43 CFR 3165.4DRILLING OPERATIONS AUTHORIZED ARE
SUBJECT TO COMPLIANCE WITH ATTACHED
"GENERAL REQUIREMENTS".NOTIFY AZTEC OCD 24 HRS.
PRIOR TO CASING & CEMENT

District I
1625 N. French Dr., Hobbs, NM 88240
District II
1301 W. Grand Avenue, Artesia, NM 88210
District III
1000 Rio Bruces Rd., Aztec, NM 87410
District IV
1220 S. St. Francis Dr., Santa Fe, NM 87505

State of New Mexico
Energy, Minerals & Natural Resources Department
OIL CONSERVATION DIVISION
1220 South St. Francis Dr.
Santa Fe, NM 87505

Form C-102
Revised October 12, 2005
Submit to Appropriate District Office
State Lease - 4 Copies
Fee Lease - 3 Copies

☐ AMENDED REPORT

WELL LOCATION AND ACREAGE DEDICATION PLAT

* API Number 30-043-21060		* Pool Code 71629		* Pool Name Basin Fruitland Coal	
* Property Code 36977		* Property Name FEDERAL 21-7-35			* Well Number 1
* OGRID No. 20572		* Operator Name SG INTERESTS I. LTD.			* Elevation 6645

10 Surface Location

UL or lot no.	Section	Township	Range	Lot Idn	Feet from the	North/South line	Feet from the	East/West line	County
B	35	21N	7W		860	North	1725	East	Sandoval

11 Bottom Hole Location If Different From Surface

UL or lot no.	Section	Township	Range	Lot Idn	Feet from the	North/South line	Feet from the	East/West line	County
* Dedicated Acres E/2 320		* Joint or Infill		* Consolidation Code		* Order No.			

No allowable will be assigned to this completion until all interests have been consolidated or a non-standard unit has been approved by the division.

16		N 89°44' W		79.90 Ch.		80.65 Ch.	
		Lat. 36.01247° N Long. 107.54333° W		860'		1725'	
		Sec.				80.66 Ch.	
		35					
N 89°56' W				N 89°29' W		N 0°09' E	
		39.91 Ch.		39.84 Ch.			
17 OPERATOR CERTIFICATION I hereby certify that the information contained herein is true and complete to the best of my knowledge and belief, and that this organization either owns a working interest or unleased mineral interest in the land including the proposed bottom hole location or has a right to drill this well at this location pursuant to a contract with an owner of such a mineral or working interest, or to a voluntary pooling agreement or a compulsory pooling order heretofore entered by the division. Signature: <u>William Schnab</u> Date: <u>12/17/2007</u> Printed Name: <u>William Schnab</u>						18 SURVEYOR CERTIFICATION I hereby certify that the well location shown on this plat was plotted from field notes of actual surveys made by me or under my supervision, and that the same is true and correct to the best of my belief. Date of Survey: <u>15 Nov 2007</u> Signature and Seal of Professional Surveyor: <u>William E. Mahnke II</u> Certificate Number: <u>8466</u>	

Submit 3 copies to appropriate District Office
District I
1625 N. French Dr., Hobbs, NM 88240
District II
1301 W. Grand Ave., Artesia, NM 88210
District III
1000 Rio Brazos Rd., Aztec, NM 87410
District IV
1220 S. St. Francis Dr., Santa Fe, NM 87505

State of New Mexico
Energy, Minerals and Natural Resources

Form C-103
May 27, 2004

OIL CONSERVATION DIVISION
1220 South St. Francis Dr.
Santa Fe, NM 87505

WELL API NO. <u>30-043-21060</u>
5. Indicate Type of Lease STATE <input type="checkbox"/> FEE <input type="checkbox"/> FED <input checked="" type="checkbox"/>
6. State Oil & Gas Lease No. Federal NMNM 099739
7. Lease Name or Unit Agreement Name Federal 21-7-35
8. Well Number #1
9. OGRID Number <u>20572</u>
10. Pool name or Wildcat Basin Fruitland Coal

SUNDRY NOTICES AND REPORTS ON WELLS
(DO NOT USE THIS FORM FOR PROPOSALS TO DRILL OR TO DEEPEN OR PLUG BACK TO A DIFFERENT RESERVOIR. USE "APPLICATION FOR PERMIT" (FORM C-101) FOR SUCH PROPOSALS.)

1. Type of Well: Oil Well ☐ Gas Well ☒ Other

2. Name of Operator SG Interests I, Ltd

3. Address of Operator

C/O Nika Energy Operating, PO Box 2677, Durango, CO, 81303

4. Well Location

Unit Letter B: 860 feet from the North line and 1725 feet from the East line

Section 35 Township 21N Range 7W NMPM County Sandoval

11. Elevation (Show whether DR, RKB, RT, GR, etc.)
6,645'

Pit or Below-grade Tank Application ☒ or Closure ☐

Pit type Drilling Depth to Groundwater >1,000 Distance from nearest fresh water well >1,000 ft Distance from nearest surface water >500 ft

Pit Liner Thickness: 12 mil Below-Grade Tank: Volume 1000 Bbls; Construction Material Synthetic

12. Check Appropriate Box to Indicate Nature of Notice, Report or Other Data

NOTICE OF INTENTION TO:

PERFORM REMEDIAL WORK ☐ PLUG AND ABANDON ☐
TEMPORARILY ABANDON ☐ CHANGE PLANS ☐
PULL OR ALTER CASING ☐ MULTIPLE COMPL ☐

OTHER: Pit Application ☒

SUBSEQUENT REPORT OF:

REMEDIAL WORK ☐ ALTERING CASING ☐
COMMENCE DRILLING OPNS. ☐ P AND A ☐
CASING/CEMENT JOB ☐

OTHER: ☐

13. Describe proposed or completed operations. (Clearly state all pertinent details, and give pertinent dates, including estimated date of starting any proposed work). SEE RULE 1103. For Multiple Completions: Attach wellbore diagram of proposed completion or recompletion.

Drilling/Completion pit to be located approximately 15 feet from well head. Pit multi-use drilling and completion to avoid additional site disturbance and pit will be considered out of service once production tubing set. Pit to be 75 feet long by 15 feet wide by 10 feet deep. Pit to be constructed, operated and closed in accordance with NMOCD guidelines and SGI procedures

I hereby certify that the information above is true and complete to the best of my knowledge and belief. I further certify that any pit or below-grade tank has been/will be constructed or closed according to NMOCD guidelines ☒, a general permit ☐ or an (attached) alternative OCD-approved plan ☐.

SIGNATURE William Schwab III TITLE Agent for SG Interests I, Ltd. DATE 12/17/2007

Type or print name William Schwab III

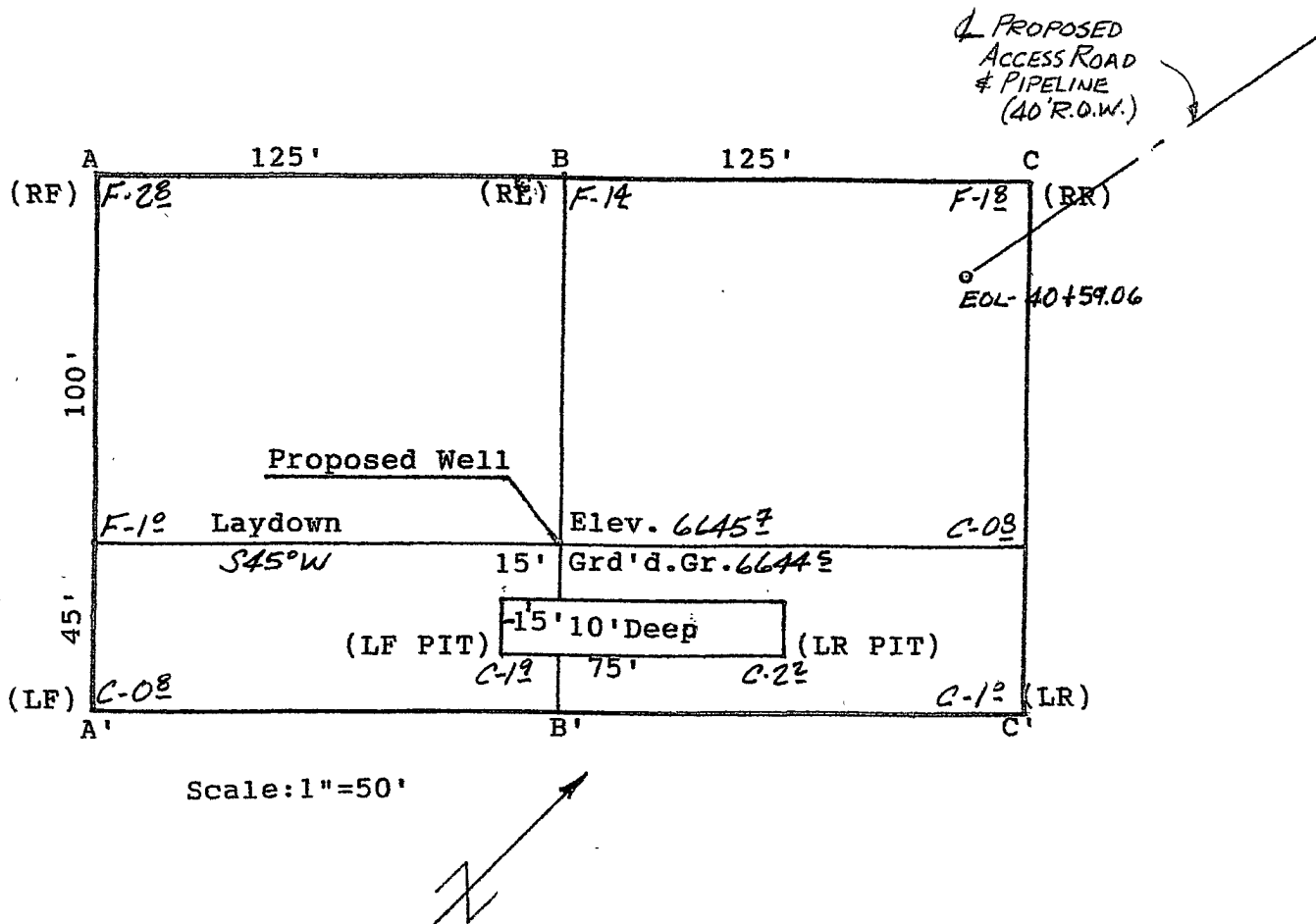
E-mail address: tripp@nikaenergy.com

Telephone No. 970-259-2701

For State Use Only

APPROVED BY: [Signature] TITLE Deputy Oil & Gas Inspector, DATE FEB 07 2008
Conditions of Approval (if any): District #3

SG INTERESTS I, LTD.
 FEDERAL 21-7-35 #1
 860' FNL & 1725' FEL
 Sec. 35, T21N, R7W, NMPM
 Sandoval Co., NM



A-A'	Vert.: 1"=30'	Horiz.: 1"=50'	C/L
6650			
6640			
B-B'			
6650			
6640			
C-C'			
6650			
6640			

DRILLING SKELETON:

<u>Interval</u>	<u>Hole Size</u>	<u>Casing Size</u>	<u>Depth</u>
Surface	12-1/4"	8-5/8"	180'
Production	7-7/8"	4-1/2"	715'

MUD PROGRAM:

<u>Interval</u>	<u>Mud Type</u>	<u>Mud Weight</u>	<u>Funnel Viscosity</u>	<u>Water Loss</u>
0 - 180'	Native	8.5 - 9.1	30 - 50	N/C
180'-715'	Native/LSND	8.5 - 9.1	30 - 50	8 - 10

CORE PROGRAM: None

ELECTRICAL LOGGING PROGRAM: Openhole logs will include a GR/Caliper and a Formation Density log from TD to the surface casing shoe.

CASING AND CEMENTING PROGRAM:

<u>Interval</u>	<u>Size, Wt, Grade, Thread</u>	<u>Depth</u>	<u>Cement</u>
Surface	8-5/8", 24#, J-55, ST&C	180'	125 sx Class B. 2% CaCl, 1/4#sx celloflake
Production	4-1/2", 10.5#, J-55, ST&C	TD	210 sx Class B. 1/4#sx celloflake, 3# Gilsonite

WELLHEAD: 3000# Independent Style

BLOWOUT PREVENTION EQUIPMENT REQUIREMENTS:

<u>Description</u>	<u>Rating</u>
Double Ram Type Preventer	2000 psi
Rotating Head	2000 psi

BOPE testing will be done by third party testers in accordance with Onshore Order No. 2. The test must be performed and recorded using a test pump, calibrated test gauges and properly calibrated strip or chart recorder. The test gauges and recorders must be of the proper range and resolution commensurate with the authorized test pressure. The test must be recorded in the driller's log and will include a low pressure test requirement of 250 psig held for 5 minutes and a high pressure test requirement held for 10 minutes. Casing pressure tests must be held for 30 minutes with no more than 10 percent pressure drop during the test.

GEOLOGIC PROGNOSIS:

Elevations: GL ~ 6645', KB ~ 6648'

Formation Tops:

<u>Formation</u>	<u>Depth</u>
Ojo Alamo	15' (Surface)
Kirtland	165'
Fruitland	340'
Coal Top	540'
PC	565'
Total Depth	715'

Note: TD will be 150' below the lowest coal. The company man will be on location once coal(s) are penetrated until TD to monitor drilling breaks and to insure that 150' of rathole is drilled. When the hole is logged, if a coal zone is indicated within 150' of bottom, additional hole is to be drilled to provide 150' of rathole.

MUD PROGRAM:

A fresh water native mud (using lime, benex & gel additions) will be used to drill the surface hole. The 7-7/8" hole should be drilled with native mud and a LSND mud as necessary for hole stability just before the top of the Fruitland formation is encountered.

At the top of the Fruitland formation mud weights should be sufficient to control pressures; viscosity should be in the 30 - 50 sec range with a water loss of 8 – 10 cc, as needed.

The Fruitland Coals are expected to be under-pressured to normal-pressured and may encounter lost circulation. LCM should be stored on location and used as needed in the event of lost circulation. Barite should also be on location in the event an over-pressured zone is encountered and a kick is taken.

CASING AND CEMENTING PROCEDURE:

Note: Notify BLM 24 hours prior to spud and testing of BOP's and cementing.

505-599-8907. **Note the new (June 1, 2005) Federal (BLM) requirements for the testing and test recording of the Blow-out Preventer Equipment.** A copy is attached to the approved APD.

Surface Casing:

1. Drill to a minimum of 185' to accommodate tallied 8 5/8" casing plus 3'. Casing tally to be taken on location.
2. Use a landing joint of 8 5/8" casing to set casing at ground level. Guide shoe on casing should be not more than 2 feet off bottom. Casing head flange to be set at ground level.
3. Displace hole with casing volume of fresh water ahead of cement.
4. Pump Class B cement with 2% CaCl at 5-7 barrel per minute.
Drop plug and displace with fresh water when preflush returns are observed at the surface. Do not over-displace.
6. If plug does not bump, hold pressure for a minimum of three hours.
 - a. Wait on cement a minimum of 8 hours or until surface samples are hard *, whichever is longer **before** nipping up the BOP. Pressure test casing and BOP to 1500 psig for 30 minutes. Low pressure test BOP and Casing 250# for 10 minutes.
 1. **Note:** The BLM requirement is a minimum of 250 psi @ 60degrees F compressive strength **before** BOP may be nipped up.
 2. **Notes:** Use a standard 8 5/8" guide shoe, an 8 5/8" insert float, 3 centralizers and 1 stop ring. Set insert on top of first joint. Bakerlok shoe, float collar and bottom two joints of casing.

Cement Slurry Designs and Notes

<u>Slurry</u>	<u>Cement & Additives</u>	<u>Water Requirements</u>	<u>Weight</u>	<u>Yield</u>
Surface	Class B + 1/4#/sx celloflake, and 2% CaCl	5.2 gals/sx	15.6 ppg	1.18 cu. ft/sk

Calculate slurry using estimated volume + 100% excess.

Production	Class B + 1/4#/sx celloflake, and 3# gilsonite	5.2 gals/sx	15.6 ppg	1.18 cu. ft/sk
------------	---	-------------	----------	----------------

Calculate slurry using caliper volume + 50% excess. Cement volume shown in this prognosis is based on hole and casing size and surface/long string annular volumes plus percentage excess shown above.

Notes:

1. Pump rates should be a minimum of 4 BPM through displacement.
2. Slurry weights should be measured using a mud balance at least every 10 minutes during mixing.
3. At least two samples of the tail should be caught and monitored at room temperature for thickening time.
4. Run Temperature Log if cement does not circulate.

SG Interests I, Ltd.
(Agent: Nika Energy Operating, LLC)
PO Box 2677
Durango, CO 81302
(970) 259-2701

Federal 21-7-35 #1
NE Sec 35-21N-R7W
860' FNL & 1725' FEL
Sandoval County, New Mexico

EIGHT POINT DRILLING PROGRAM

1. Estimated Formation Tops:

Ojo Alamo	15'
Kirtland	165'
Fruitland	340'
Coal Top	540'
PC	565'
Total Depth	715'

2. Estimated Depth of Anticipated Minerals:

Fruitland (Gas)	540'
-----------------	------

3. Minimum Specifications for Pressure Control Equipment:

BOP equipment and accessories will meet or exceed BLM requirements outlined in 43 CFR Part 3160.

A 2000 psig double ram hydraulic BOP will be used (see attached diagram). Accessories to the BOP will meet BLM requirements for a 2000 psig system. The accumulator system capacity will be sufficient to close all BOPE with a 50% safety factor. Fill line, kill line and line to choke manifold will be 2". BOP's will be function tested every 24 hours and will be recorded on IADC log.

Surface casing will be tested to 1500 psig for 30 minutes.

Accessories to BOPE will include upper and lower Kelly cocks with handles, stabbing valve to fit drill pipe on floor at all times, string float at bit, 2000 psig choke manifold with 2" adjustable and 2" positive chokes, and pressure gauge.

4. Casing and Cementing Program:

<u>Hole Size</u>	<u>Interval</u>	<u>Csq Size</u>	<u>Wt, Grd, Jt</u>
12-1/4"	0-180'	8-5/8"	24.0#, J-55, STC
7-7/8"	0-715'	4-1/2"	10.5#, J-55, STC

Surface Casing will be cemented with 125 sx (148 cu ft) class B w/2% CaCl and 1/4#/sx of celloflake (Yield = 1.18 cuft/sx, Weight = 15.6 #/gal). Cement volumes include 100% excess to circulate cement to surface. A guide shoe, insert float and three (3) centralizers will be used. WOC time is 8 hours. The casing will be pressure tested to 1500 psig.

Production Casing will be cemented with 210 sx (248 cu ft) class B w/2% CaCl and 1/4#/sx celloflake (Yield = 1.18 cuft/sx, Weight = 15.6 #/gal). Cement volume includes 50% excess to circulate cement to surface. In the event cement is not circulated a temperature survey will be run to determine the actual cement top. Cementing equipment will include a guide shoe, float collar and 7 centralizers. Type 5 or Class G cement may be used depending on availability of Class B.

5. Mud Program:

A native water based mud system (FW) will be used initially followed by a low-solids, non-dispersed gel system (LSND) as needed to condition the hole for logs. Adequate amounts of lost circulation and weighting material will be on location if needed as well as sorbitive agents to handle potential spills of fuel or lubricants.

<u>Depth</u>	<u>Type</u>	<u>Wt (ppg)</u>	<u>Vis (sec)</u>	<u>Wtr loss</u>
0-180'	FW	± 8.5	30-33	NC
180'-TD	FW & LSND	± 8.7-9.1	30-50	8-10 cc

6. Testing, Coring and Logging Program:

No DST's or cores are planned. Openhole logs, if run, will include GR, Induction, Density and Caliper Logs. The GR-Density logs will be run from TD to the top of the Fruitland formation. GR-Induction-Caliper logs will be run from TD to the bottom of the surface casing.

2-M SYSTEM

