

UNITED STATES
DEPARTMENT OF THE INTERIOR
BUREAU OF LAND MANAGEMENTFORM APPROVED
OMB NO. 1004-0137
Expires March 31, 2007

SUNDRY NOTICES AND REPORTS ON WELLS

Do not use this form for proposals to drill or to re-enter an abandoned well. Use Form 3160-3 (APD) for such proposals.

SUBMIT IN TRIPLICATE - Other instructions on reverse side

1. Type of Well

☐ Oil Well ☒ Gas Well ☐ Other

2. Name of Operator

Energen Resources Corporation

3a. Address

2010 Afton Place, Farmington, NM 87401

4. Location of Well (Footage, Sec., T., R., M., or Survey Description)

SHL: 790' ENL, 1140' FWL (D)

BHL: 2530' ENL, 760' FWL (E)

Sec. 24 T32N, R5W

RECEIVED

JAN 9 2008

Bureau of Land Management

3b. Phone Not (include area code)

(505) 325-6800

5. Lease Serial No.

NM 30586

6. If Indian, Allottee or Tribe Name

7. If Unit or CA/Agreement, Name and/or No.

8. Well Name and No.

Carracas Canyon 4

Unit 24 A

9. API Well No.

30-039-24324

10. Field and Pool, or Exploratory Area

Basin Fruitland Coal

11. County or Parish, State

Rio Arriba NM

12. CHECK APPROPRIATE BOX(ES) TO INDICATE NATURE OF NOTICE, REPORT, OR OTHER DATA

TYPE OF SUBMISSION

☒ Notice of Intent☐ Subsequent Report☐ Final Abandonment Notice

TYPE OF ACTION

☐ Acidize☐ Alter Casing☐ Casing Repair☐ Change Plans☐ Convert to Injection☐ Deepen☐ Fracture Treat☐ New Construction☐ Plug and Abandon☐ Plug Back☐ Production (Start/Resume)☐ Reclamation☒ Recomplete☐ Temporarily Abandon☐ Water Disposal☐ Water Shut-Off☐ Well Integrity☐ Other

13. Describe Proposed or Completed Operation (clearly state all pertinent details, including estimated starting date of any proposed work and approximate duration thereof. If the proposal is to deepen directionally or recompleate horizontally, give subsurface locations and measured and true vertical depths of all pertinent markers and zones. Attach the Bond under which the work will be performed or provide the Bond No. on file with BLM/BIA. Required subsequent reports shall be filed within 30 days following completion of the involved operations. If the operation results in a multiple completion or recompletion in a new interval, a Form 3160-4 shall be filed once testing has been completed. Final Abandonment Notices shall be filed only after all requirements, including reclamation, have been completed, and the operator has determined that the final site is ready for final inspection.)

Energen Resources would like to recompleate the Carracas Canyon Unit 24 A #4 by drilling a horizontal lateral off of the existing vertical wellbore as indicated on the revised attached C-102 and directional wellplan. A whipstock will be set at 3767' +/- (TVD) and a window milled in the existing 5-1/2" casing from 3755'-3761' +/- (TVD). The lateral will be drilled to 5650' MD, 3955' TVD. A 3.5" 9.3 ppf, J-55, flush joint pre-drilled liner will be ran and set from 3757'-5650' MD. A 2 3/8" tubing string will be landed at 3952' TVD in the 5-1/2" casing. A closed loop system will be implemented during recompletion.

NOTIFY AZTEC OCD 24 HRS.
PRIOR TO CASING & CEMENTRCVD FEB 8 '08
OIL CONS. DIV.

DIST. 3

HOLD C104 FOR directional survey
as drilled C-102SEE ATTACHED FOR
CONDITIONS OF APPROVAL14. I hereby certify that the foregoing is true and correct
Name (Printed/Typed)

Jason Kincaid

Title

Drilling Engineer

Date 1/8/2008

THIS SPACE FOR FEDERAL OR STATE OFFICE USE

Approved by

Title

Date

Conditions of approval, if any, are attached. Approval of this notice does not warrant or certify that the applicant holds legal or equitable title to those rights in the subject lease which would entitle the applicant to conduct operations thereon.

Office

Title 18 U.S.C. Section 1001, and Title 45 U.S.C. Section 1212, makes it a crime for any person knowingly and willfully to make to any department or agency of the United States any false, fictitious or fraudulent statements or representations as to any matter within its jurisdiction.

NMOCD

District I
1625 N. French Dr., Hobbs, NM 88240
District II
1301 W. Grand Avenue, Artesia, NM 88210
District III
1000 Rio Brazos Rd., Aztec, NM 87410
District IV
1220 S. St. Francis Dr., Santa Fe, NM 87505

State of New Mexico
Energy, Minerals & Natural Resources Department
OIL CONSERVATION DIVISION
1220 South St. Francis Dr.
Santa Fe, NM 87505

Form C-102
Revised October 12, 2005
Submit to Appropriate District Office
State Lease - 4 Copies
Fee Lease - 3 Copies

☒ AMENDED REPORT

WELL LOCATION AND ACREAGE DEDICATION PLAT

¹ API Number 30-039-24324	² Pool Code 71629	³ Pool Name Basin Fruitland Coal
⁴ Property Code	⁵ Property Name Carracas Canyon Unit 24A	⁶ Well Number #4
⁷ OGRID No. 162928	⁸ Operator Name Energen Resources Corporation	⁹ Elevation 7325' GL

¹⁰ Surface Location

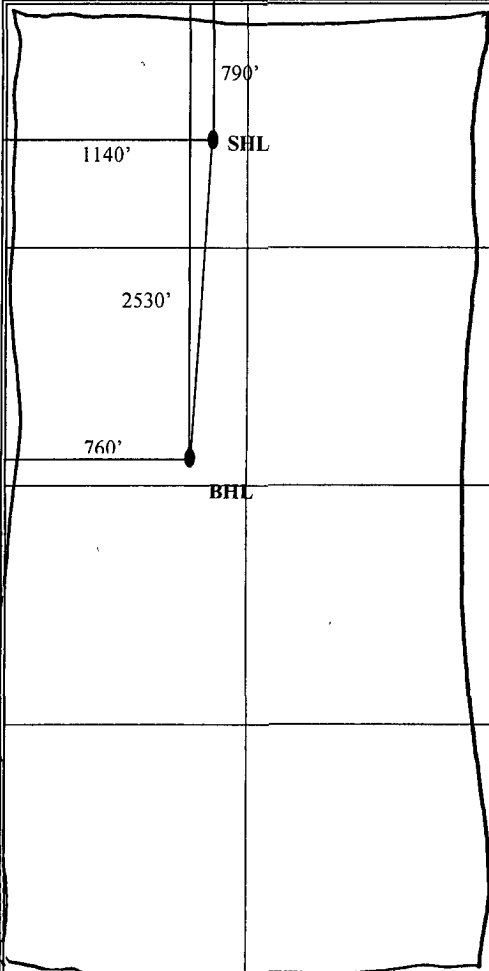

UL or lot no. D	Section 24	Township 32N	Range 5W	Lot Idn	Feet from the 790	North/South line North	Feet from the 1140	East/West line West	County Rio Arriba
--------------------	---------------	-----------------	-------------	---------	----------------------	---------------------------	-----------------------	------------------------	----------------------

¹¹ Bottom Hole Location If Different From Surface

UL or lot no. E	Section 24	Township 32N	Range 5W	Lot Idn	Feet from the 2530	North/South line North	Feet from the 760	East/West line West	County Rio Arriba
--------------------	---------------	-----------------	-------------	---------	-----------------------	---------------------------	----------------------	------------------------	----------------------

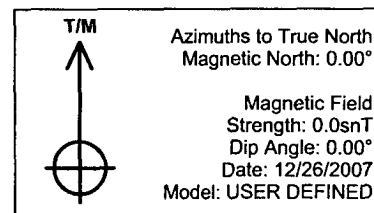
¹² Dedicated Acres 320 W/2	¹³ Joint or Infill	¹⁴ Consolidation Code	¹⁵ Order No.
--	-------------------------------	----------------------------------	-------------------------

No allowable will be assigned to this completion until all interests have been consolidated or a non-standard unit has been approved by the division.

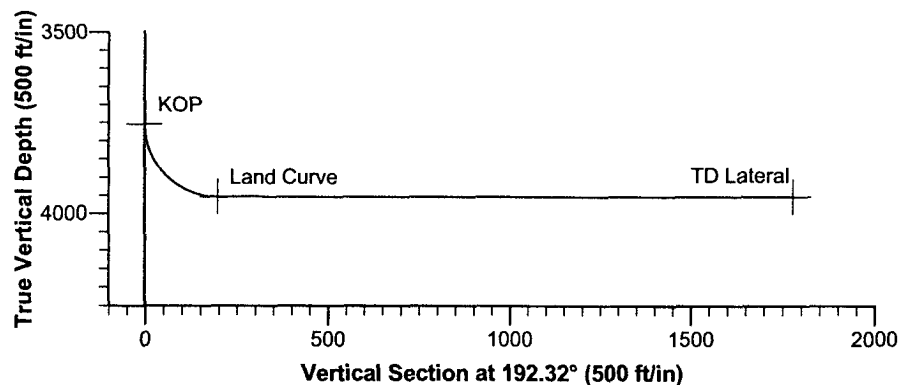
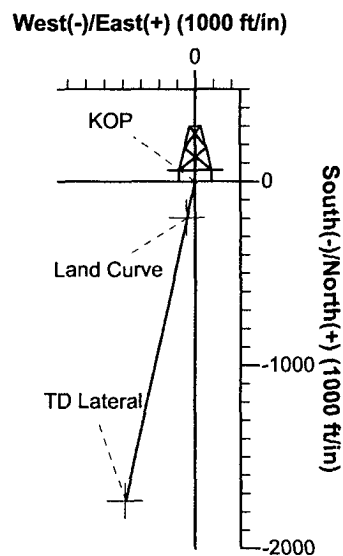
	<p>¹⁷ OPERATOR CERTIFICATION <i>I hereby certify that the information contained herein is true and complete to the best of my knowledge and belief, and that this organization either owns a working interest or unleased mineral interest in the land including the proposed bottom hole location or has a right to drill this well at this location pursuant to a contract with an owner of such a mineral or working interest, or to a voluntary pooling agreement or a compulsory pooling order heretofore entered by the division.</i></p> <p> 8/30/2007 Signature Date</p> <p>Jason Kincaid Printed Name</p>
	<p>¹⁸ SURVEYOR CERTIFICATION <i>I hereby certify that the well location shown on this plat was plotted from field notes of actual surveys made by me or under my supervision, and that the same is true and correct to the best of my belief</i></p> <p>June 6, 1988 Date of Survey</p> <p>Signature and Seal of Professional Surveyor</p> <p>Original Survey Conducted and Recorded By: Neale C. Edwards</p> <p>6857 Certificate Number</p>

Project: Carson Nat'l Forest - NW S24, T32N, R5W
Site: Carracas Canyon
Well: Carracas Canyon Unit 24 A #4
Wellbore: Carracas Canyon Unit 24 A #12 ST
Plan: Preliminary Plan (Carracas Canyon Unit 24 A #4/Carracas Canyon Unit 24 A #12 ST)

PROJECT DETAILS: Carson Nat'l Forest - NW S24, T32N, R5W	
Geodetic System: US State Plane 1983	
Datum: North American Datum 1983	
Ellipsoid: GRS 1980	
Zone: New Mexico Central Zone	
System Datum: Mean Sea Level	



SECTION DETAILS										
Sec	MD	Inc	Azi	TVD	+N/-S	+E/-W	DLeg	TFace	VSec	Target
1	0.0	0.00	0.00	0.0	0.0	0.0	0.00	0.00	0.0	
2	3755.0	0.00	0.00	3755.0	0.0	0.0	0.00	0.00	0.0	KOP
3	4069.2	90.00	192.33	3955.0	-195.4	-42.7	28.65	192.33	200.0	Land Curve
4	5650.2	90.00	192.31	3955.0	-1740.0	-380.0	0.00	-110.92	1781.0	TD Lateral



ENERGEN RESOURCES

Pertinent Data Sheet

Date: 3/1/06 **Well Name:** CCU 24 A 4 **API#:** 30-039-24324 **DP#:** 24324A
Unit: D **Sec:** 24 **Twp:** 32N **Rge:** 5W **Footage:** 790' FNL, 1140' FWL
County: Rio Arriba **State:** NM **Spud:** 10/20/88 **Completed:** 4/11/89
Field: Fruitland Coal **Elev:** 7325' **TD:** 4075' **PBTD:** 4036' **KB:** 12'
Perfs: 3948'-3965' w/68 - 0.42" holes at 4 SPF

Frac: Original-2840 bbls MMIIB-30 fluid, 10,000# 40/70 sand & 184,000# 12/20 sand

Refrac: 1000 gal 10% formic acid, followed w/ 60,054 gal 25# Delta frac 140 gel w/sandwedge containing 116,000# 20/40 brady sd.

Hole Size	Casing Size	Weight & Grade	Depth Set	Cement	TOC
12 1/4"	9 5/8"	36# K-55	359'	224 cf	Circ to surface
8 3/4"	5 1/2"	15.5# K-55	4036'	1685 cf	Circ to surface

Tubing Size	# Joints	Weight & Grade	Depth Set	Seat Nipple	Packer
2 3/8"	125	4.7# J-55	3950' KB	3950' KB	
2 3/8" P.Sub	1	4.7# J-55	3957' KB		
2 3/8" MA	1+Collar	4.7# J-55	3989' KB		

Rod & Pump Record: 2" x 1-1/2" x 20' RHAC; 1-2', 1-4', 1-6' & 1-8' pony rods

Rod Size	# Rods	Length	Grade
3/4"	157		

Log Record: CN-FD, Coal, GR-CBL, Digital Sonic, Mudlog

Formation Tops:

Ojo Alamo	3212	Menefee
Kirtland	3381	Point Lookout
Fruitland	3824	Mancos
Pictured Cliffs		Gallup
Lewis		Graneros
Cliffhouse		Dakota

Work History: 10/18/05 TOOH WITH 48 JTS TO FIND HOLE IN TUBING. REPLACE BAD JOINT AND TRIP BACK IN HOLE. ND BOP, NU WELLHEAD. RIH WITH NEW PUMP AND RODS. SET TAG AND CHECK PUMP ACTION, OK.

Sept 2003-TOH w/pump, rods & tbg. CO fill from 3960' to 4036'. TIH w/2-3/8" tng, land @ 3989'. Run 1-1/2" pump and rods.

July 2003-changed out bad jt tbg.

June 2003-change pump from 1-1/4" to 1-1/2".

Sept 2001-TOH w/1-1/2" tbg., CO fill from 3990' - 4036'. Ran 2-3/8" tbg. Land tbg @ 3960'. Rod up well.

April 2000-reperf & refrac coal. Ran 1 1/2" tbg., Land @ 3945'

Aug 2000-Installed gas lift mandrels on 1 1/2" tbg. Sept 2001-Changed out tbg from 1 1/2" to 2 3/8". Rod up well.

May 1993-removed pumping unit, changed to plunger lift.

Well was originally on rod pump, 2-7/8" tbg