

UNITED STATES
DEPARTMENT OF THE INTERIOR
BUREAU OF LAND MANAGEMENT

RCVD MAR 12 '08

OIL CONS. DIV.

DIST. 3

APPLICATION FOR PERMIT TO DRILL, DEEPEN, OR PLUG BACK

1a. Type of Work DRILL	2006 AUG 22 PM 2 21	5. Lease Number SF-078422
1b. Type of Well GAS	RECEIVED 070 FARMINGTON NM	Unit Reporting Number NMNM-078395C-DK
2. Operator BURLINGTON RESOURCES Oil & Gas Company LP		6. If Indian, All. or Tribe
3. Address & Phone No. of Operator PO Box 4289, Farmington, NM 87499 (505) 326-9700		7. Unit Agreement Name Huerfano Unit
4. Location of Well Unit I (NESE), 1395' FSL & 1080' FEL Lat. 36*31.70828'N Long. 107*55.85220'W		8. Farm or Lease Name
		9. Well Number #282E
		10. Field, Pool, Wildcat Basin Dakota
		11. Sec., Twn, Rge, Mer. (NMPM) I Sec. 31, T27N, R10W
		API # 30-045-33911
14. Distance in Miles from Nearest Town 18 miles to Bloomfield, NM	12. County San Juan	13. State NM
15. Distance from Proposed Location to Nearest Property or Lease Line 1080'		
16. Acres in Lease	17. Acres Assigned to Well DK 327.21 E/2 320	
18. Distance from Proposed Location to Nearest Well, Drig, Compl, or Applied for on this Lease 52' Huerfano Unit #300 Gallup		
19. Proposed Depth 6377'	20. Rotary or Cable Tools Rotary	
21. Elevations (DF, FT, GR, Etc.) 6086' GR	22. Approx. Date Work will Start	
23. Proposed Casing and Cementing Program See Operations Plan attached	NOTIFY AZTEC OGD 24 HRS. PRIOR TO CASING & CEMENT.	
24. Authorized by: <u><i>Andreas Thompson</i></u> Regulatory Analyst	<u>8-22-06</u> Date	

PERMIT NO.

APPROVAL DATE

APPROVED BY *AM*

TITLE AFM

DATE 3/11/08

Archaeological Report attached

Threatened and Endangered Species Report attached

NOTE: This format is issued in lieu of U.S. BLM Form 3160-3

Title 18 U.S.C. Section 1001, makes it a crime for any person knowingly and willfully to make to any department or agency of the United States any false, fictitious or fraudulent statements or presentations as to any matter within its jurisdiction.

This well is NOT in the HPA area.

DRILLING OPERATIONS AUTHORIZED ARE
SUBJECT TO COMPLIANCE WITH ATTACHED
"GENERAL REQUIREMENTS".

NMOCDB

MAR 19 2008

This action is subject to technical and
procedural review pursuant to 43 CFR 3165.3
and appeal pursuant to 43 CFR 3165.4

DISTRICT I
1625 N. French Dr., Hobbs, N.M. 88240

State of New Mexico
Energy, Minerals & Natural Resources Department

Form C-102
Revised August 15, 2000

DISTRICT II
811 South First, Artesia, N.M. 88210

Submit to Appropriate District Office
State Lease - 4 Copies
Fee Lease - 3 Copies

DISTRICT III
1000 Rio Brazos Rd., Aztec, N.M. 87410

OIL CONSERVATION DIVISION

2040 South Pacheco
Santa Fe, NM 87505

DISTRICT IV
2040 South Pacheco, Santa Fe, NM 87505

AMENDED REPORT

WELL LOCATION AND ACREAGE DEDICATION PLAT

1 API Number 30-045- <u>33911</u>		2 Pool Code 71599		3 Pool Name DAKOTA	
4 Property Code 7139		5 Property Name HUERFANO UNIT			6 Well Number 282 E
7 OGRID No. 14538		8 Operator Name BURLINGTON RESOURCES O&G CO LP			9 Elevation 6086'

10 Surface Location

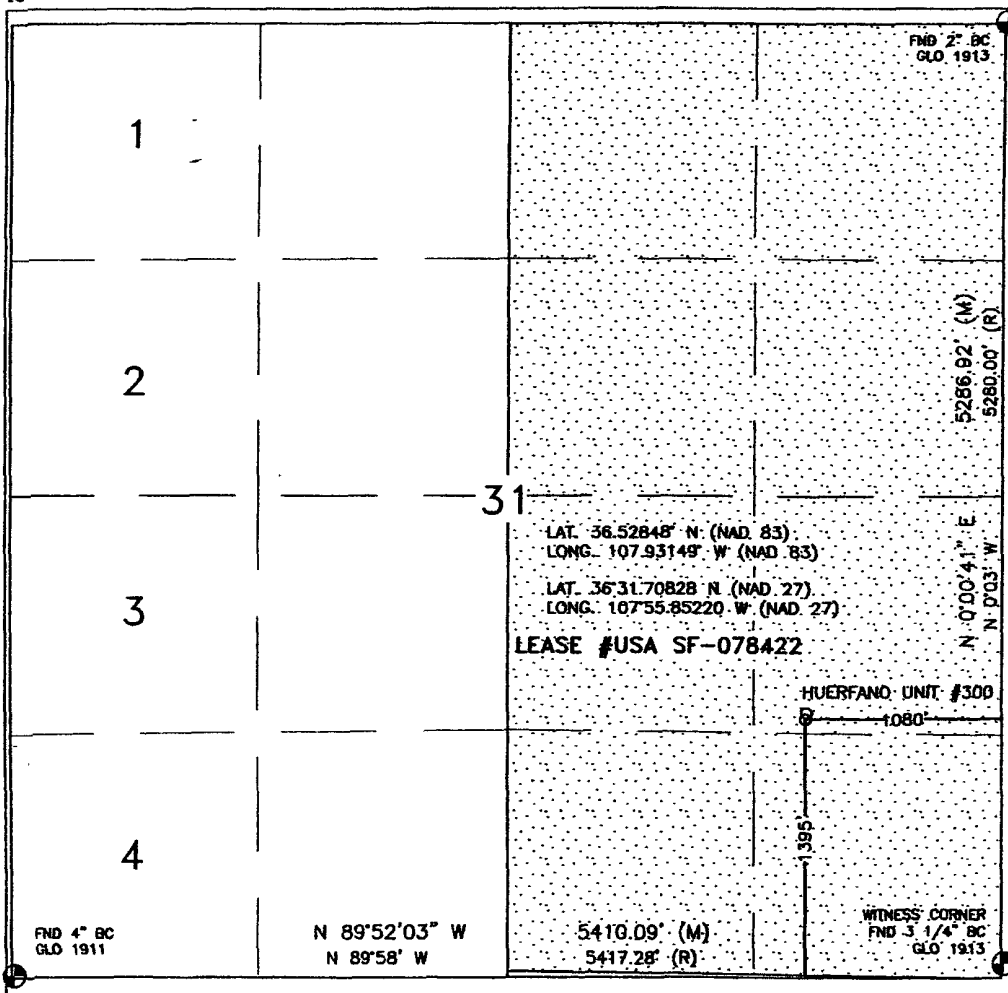
UL or lot no.	Section	Township	Range	Lot Idn	Feet from the	North/South line	Feet from the	East/West line	County
I	31	27N	10W		1395'	SOUTH	1080'	EAST	SAN JUAN

11 Bottom Hole Location If Different From Surface

UL or lot no.	Section	Township	Range	Lot Idn	Feet from the	North/South line	Feet from the	East/West line	County
I									
12 Dedicated Acres <u>327.21</u> Acres - (E/2)			13 Joint or Infill		14 Consolidation Code		15 Order No.		

NO ALLOWABLE WILL BE ASSIGNED TO THIS COMPLETION UNTIL ALL INTERESTS HAVE BEEN CONSOLIDATED OR A NON-STANDARD UNIT HAS BEEN APPROVED BY THE DIVISION

16



17 OPERATOR CERTIFICATION

I hereby certify that the information contained herein is true and complete to the best of my knowledge and belief

Patsy Clugston
Signature

Patsy Clugston
Printed Name

Sr. Regulatory Specialist
Title

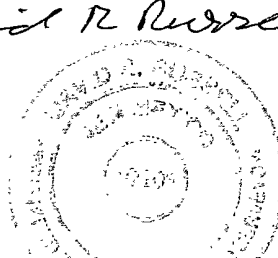
7/24/06
Date

18 SURVEYOR CERTIFICATION

I hereby certify that the well location shown on this plat was plotted from field notes of actual surveys made by me or under my supervision, and that the same is true and correct to the best of my belief.

JUNE 28, 2006
Date of Survey

Signature and Seal of Professional Surveyor:
David R. Russell



DAVID RUSSELL
Certificate Number 10201

District I
1625 N. French Dr., Hobbs, NM 88240
District II
1301 W. Grand Ave., Artesia, NM 88210
District III
1000 Rio Brazos Rd., Aztec, NM 87410
District IV
1220 S. St. Francis Dr., Santa Fe, NM 87505

OIL CONSERVATION DIVISION
1220 South St. Francis Dr.
Santa Fe, NM 87505

WELL API NO. 30-045-33911
5. Indicate Type of Lease STATE [] FEE []
6. State Oil & Gas Lease No. Federal Lease NMSF-078422
7. Lease Name or Unit Agreement Name Huerfano Unit
8. Well Number #282E
9. OGRID Number 14538
10. Pool name or Wildcat Basin Dakota
11. Elevation (Show whether DR, RKB, RT, GR, etc.) 6086' GR
Pit or Below-grade Tank Application [X] or Closure []
Pit type New Drill Depth to Groundwater >100' Distance from nearest fresh water well >1000' Distance from nearest surface water <200'
Pit Liner Thickness: 12 mil Below-Grade Tank: Volume bbls; Construction Material

SUNDRY NOTICES AND REPORTS ON WELLS
(DO NOT USE THIS FORM FOR PROPOSALS TO DRILL OR TO DEEPEN OR PLUG BACK TO A DIFFERENT RESERVOIR. USE "APPLICATION FOR PERMIT" (FORM C-101) FOR SUCH PROPOSALS)
1. Type of Well: Oil Well [] Gas Well [X] Other
2. Name of Operator BURLINGTON RESOURCES OIL & GAS COMPANY LP
3. Address of Operator 3401 E. 30TH STREET, FARMINGTON, NM 87402
4. Well Location Unit Letter I : 1395 feet from the South line and 1080 feet from the East line
Section 31 Township 27N Range 10W NMPM County San Juan

12. Check Appropriate Box to Indicate Nature of Notice, Report or Other Data
NOTICE OF INTENTION TO:
PERFORM REMEDIAL WORK [] PLUG AND ABANDON []
TEMPORARILY ABANDON [] CHANGE PLANS []
PULL OR ALTER CASING [] MULTIPLE COMPL []
OTHER: New Drill [X]
SUBSEQUENT REPORT OF:
REMEDIAL WORK [] ALTERING CASING []
COMMENCE DRILLING OPNS [] P AND A []
CASING/CEMENT JOB []
OTHER: []

13. Describe proposed or completed operations. (Clearly state all pertinent details, and give pertinent dates, including estimated date of starting any proposed work). SEE RULE 1103. For Multiple Completions: Attach wellbore diagram of proposed completion or recompletion.

New Drill, Lined:

Burlington Resources proposes to construct a new drilling pit and an associated vent/flare pit. Based on Burlington's interpretation of the Ecosphere's risk ranking criteria, the new drilling pit will be a lined pit as detailed in Burlington's Revised Drilling / Workover Pit Construction / Operation Procedures dated November 11, 2004 on file at the NMOCD office. A portion of the vent/flare pit will be designed to manage fluids and that portion will be lined as per the risk ranking criteria. Burlington Resources anticipates closing these pits according to the Drilling / Workover Pit Closure Procedure dated August 2, 2004 on file at the NMOCD office.

I hereby certify that the information above is true and complete to the best of my knowledge and belief. I further certify that any pit or below-grade tank has been/will be constructed or closed according to NMOCD guidelines [], a general permit [X] or an (attached) alternative OCD-approved plan [].

SIGNATURE Philana Thompson TITLE Regulatory Analyst DATE 8/9/2006

Type or print name Philana Thompson E-mail address: PThompson@br-inc.com Telephone No. 505-326-9530

For State Use Only Deputy Oil & Gas Inspector, District #3

APPROVED BY [Signature] TITLE DATE MAR 19 2008

Conditions of Approval (if any):

OPERATIONS PLAN

Well Name: HUERFANO UNIT 282E
Location: 1395' FSL & 1080' FEL, Section Sec 31-T27N-R10W
 San Juan County, New Mexico

Formation: Basin Dakota
Elevation: 6086' GL

<u>Formation Tops:</u>	<u>Top</u>	<u>Bottom</u>	<u>Contents</u>
Surface	San Jose	693'	
Ojo Alamo	693'	824'	aquifer
Kirtland	824'	1487'	gas
Fruitland	1487'	1679'	gas
Pictured Cliffs	1679'	1859'	gas
Lewis	1859'	2135'	
Huerfano Bentonite	2135'		
Chacra	2563'	3268'	gas
Massive Cliff House	3268'	3312'	gas
Menefee	3312'	4136'	gas
Massive Point Lookout	4136'	4476'	gas
Mancos Shale	4476'	5206'	
Upper Gallup	5206'	6096'	gas
Greenhorn	6096'	6157'	gas
Graneros	6157'	6216'	gas
Two Wells	6216'	6261'	gas
Paguate	6261'	6303'	gas
Upper Cubero	6303'	6311'	gas
Lower Cubero	6311'	6377'	gas
Encinal	6377'	6377'	gas
Total Depth:	6377'		gas

Logging Program:

Mud Logs/Coring/DST

Mud logs - none
 Coring - none
 DST - none
 Open hole - none
 Cased hole - Gamma Ray, CBL - surface to TD

Mud Program:

<u>Interval</u>	<u>Type</u>	<u>Weight</u>	<u>Vis.</u>	<u>Fluid Loss</u>
0 - 320'	Spud MUD/Air/ Air Mist	8.4 - 9.0	40 - 50	no control
320' - 6377'	LSND	8.4 - 9.0	30 - 60	no control

Casing Program (as listed, the equivalent, or better):

<u>Hole Size</u>	<u>Depth Interval</u>	<u>Csg. Size</u>	<u>Wt.</u>	<u>Grade</u>
12 1/4"	0' - 320'	8 5/8"	24.0#	J-55
7-7/8"	0' - 6377'	4-1/2"	10.5#	J-55

Tubing Program:

<u>Depth Interval</u>	<u>Csg. Size</u>	<u>Wt.</u>	<u>Grade</u>
0' - 6377'	2 3/8"	4.7#	J-55

Surface to Total Depth -

2" nominal, 2000 psi minimum choke manifold (Reference Figure #3).

Completion Operations -

7 1/16" 2000 psi double gate BOP stack (Reference Figure #2). After nipple-up prior to completion, pipe rams, casing and liner top will be tested to 2000 psi for 15 minutes.

Wellhead -

8 5/8" x 4 1/2" x 2 3/8" x 2000 psi tree assembly.

General -

- Pipe rams will be actuated once each day and blind rams will be actuated once each trip to test proper functioning.
- An upper kelly cock valve with handle available and drill string valves to fit each drill string will be available on the rig floors at all times.
- BOP pit level drill will be conducted weekly for each drill crew.
- All BOP tests & drills will be recorded in daily drilling reports.
- Blind and pipe rams will be equipped with extension hand wheels.

Cementing:

8 5/8" surface casing conventionally drilled -
Cement with 321 sacks Type III cement with 0.25 pps Celloflake, 3% calcium chloride. (200% excess, bring cement to surface). Wait on cement appropriate time until cement achieves 250 psi compressive strength at 60 degrees F. prior to nipple up of BOPE. Wait on cement for 8 hrs for conventionally set holes before pressure testing or drilling out from under surface.

Saw tooth guide shoe on bottom. Bowspring centralizers will be run in accordance with Onshore Order #2.

4 1/2" Production Casing Two Stage - 410
Stage collar set @ 3986'. First Stage: Lead with w/~~264~~ sacks Premium Lite HS FM cmt w/0.25 pps celloflake, 0.3% CD-32, 6.25 pps LCM-1 and 1% FL-52. Second Stage: 430 sacks Premium Lite cmt w/3% calcium chloride, 0.4% metasilicate, 0.25 pps celloflake, 5 pps LCM-1 and 0.4% FL-52. (2149) cu ft - 50% excess, circulate to surface, run CBL/temperature survey if cement is not circulated to surface.)

Cement nose guide shoe on bottom with float collar spaced on top of shoe joint. Bowspring centralizers spaced every fourth joint off bottom, to the base of the Ojo Alamo @ 824'. Two turbolating centralizers at the base of the Ojo Alamo 824'. Bowspring centralizers spaced every fourth joint from the base of the Ojo Alamo to the base of the surface casing.

Note: If open hole logs are run, cement volumes will be based on 25% excess over caliper volumes.

If hole conditions permit, an adequate water spacer will be pumped ahead of each cement job to prevent cement/ mud contamination or cement hydration.

Special Drilling Operations (Air/Mist Drilling):

The following equipment will be operational while air/mist drilling:

- An anchored blooie line will be utilized to discharge all cuttings and circulating medium to the blow pit a minimum of 100' from the wellhead.
- The blooie line will be equipped with an automatic igniter or pilot light.
- Compressors will be located a minimum of 100' from the wellhead in the opposite direction from the blooie line.
- Engines will have spark arresters or water cooled exhaust.

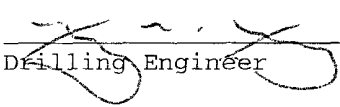
Special Drilling Operations (Air/Mist Drilling):

- The rotating head will be properly lubricated and maintained.
- A float valve will be utilized above the bit.
- Mud circulating equipment, water, and mud materials will be sufficient to maintain control of the well.

Additional Information:

- The Dakota formation will be completed.
- No abnormal temperatures or hazards are anticipated.
- Anticipated pore pressures are as follows:

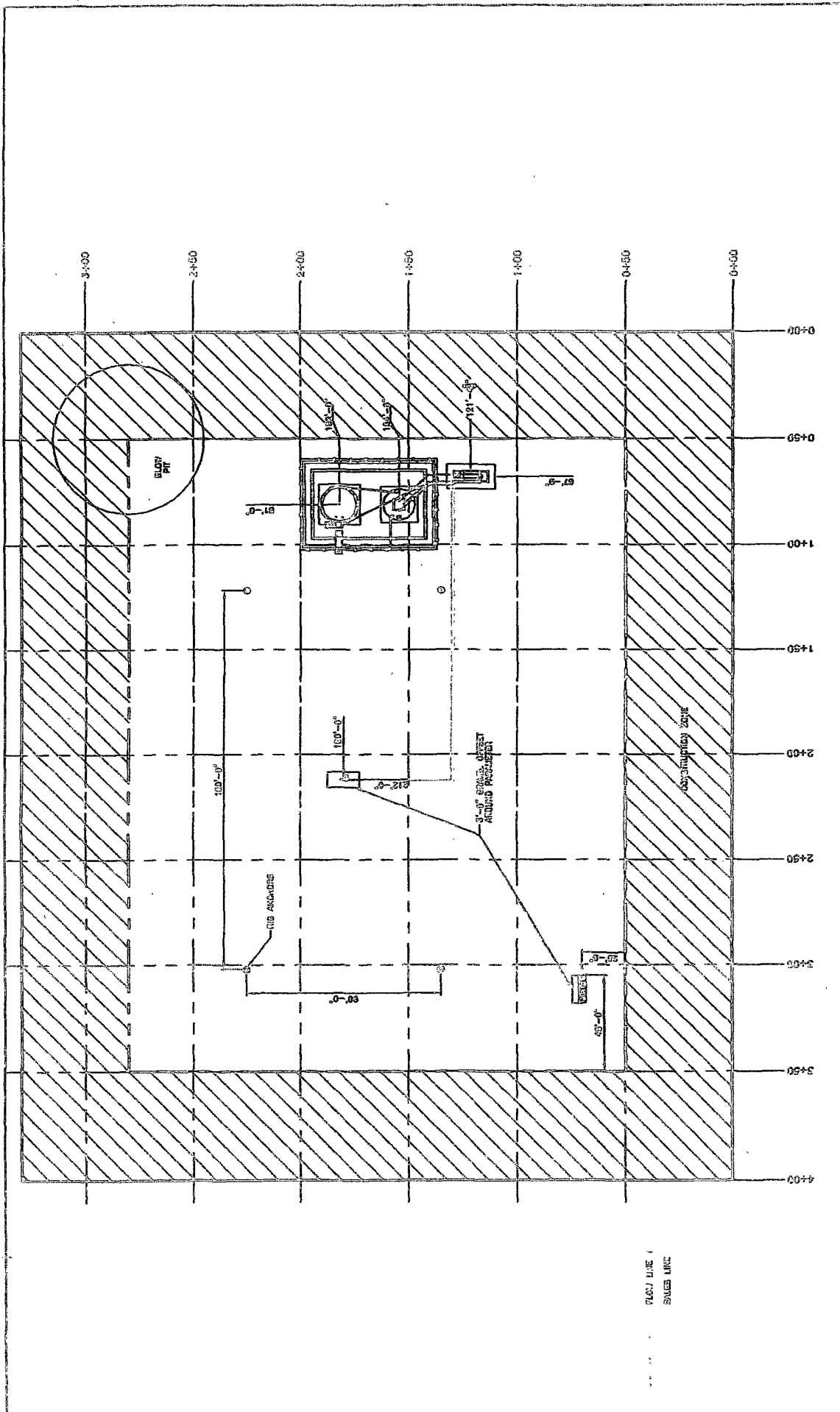
Fruitland Coal	300 psi
Pictured Cliffs	600 psi
Mesa Verde	700 psi
Dakota	2500 psi
- Sufficient LCM will be added to the mud system to maintain well control, if lost circulation is encountered below the top of the Pictured Cliffs.
- The East half of Section 31 is dedicated to the Dakota formation.
- This gas is dedicated.



Drilling Engineer

8/9/06

Date



PLAN LINE 1
SCALE LINE

DATE: _____

BY: _____

FOR: _____

PROJECT: _____

DESCRIPTION: _____

SCALE: _____

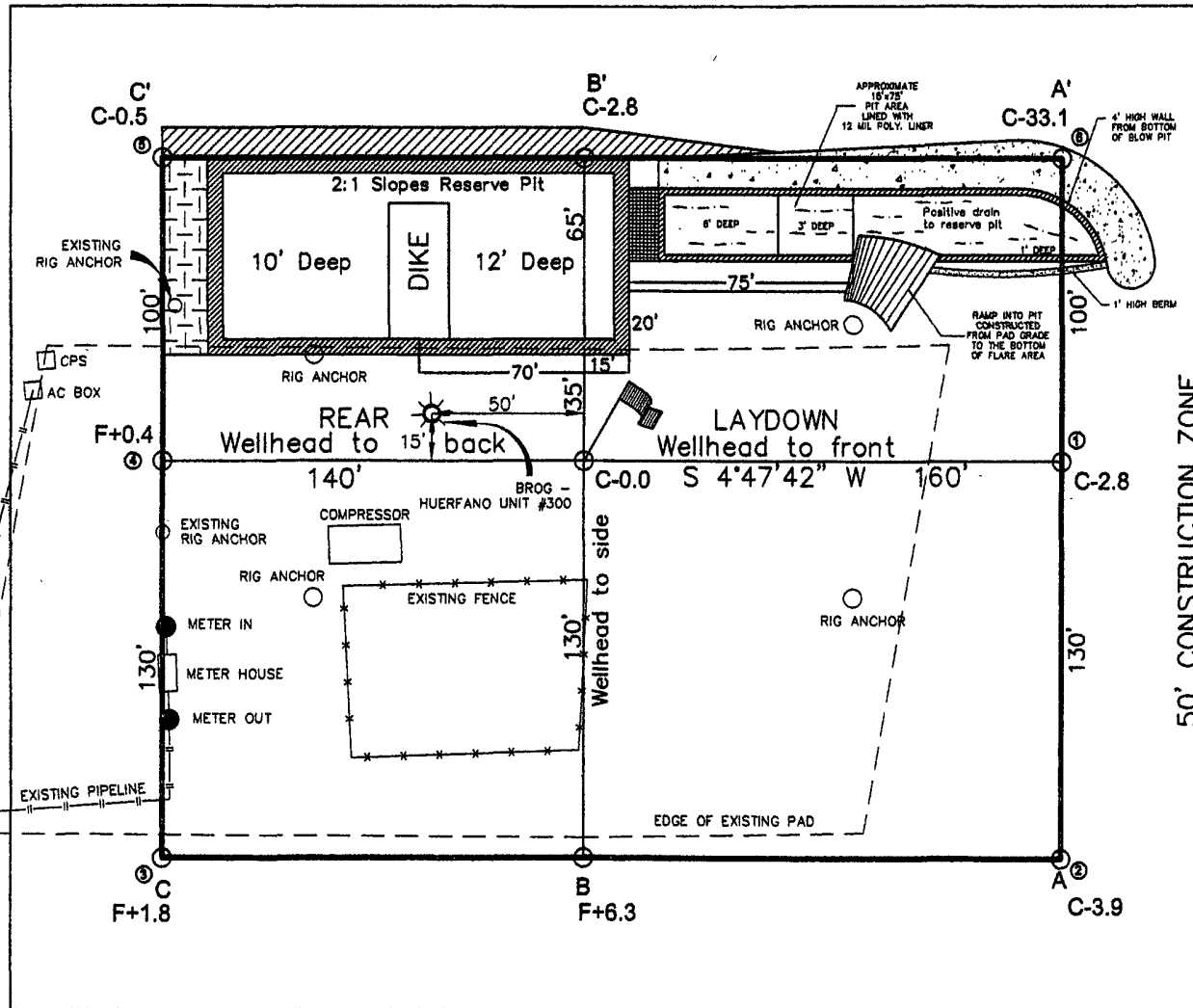
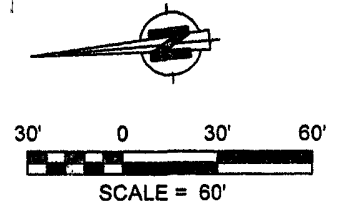
SHEET 1 OF 4

WASHINGTON, NEW MEXICO

HIGH PRESSURE MESA VERDE/DAKOTA FACILITY DIAGRAM - SITE LAYOUT


LATITUDE: 36.52848°N
 LONGITUDE: 107.93149°W
 DATUM: NAD 83

BURLINGTON RESOURCES O&G CO LP
 HUERFANO UNIT #282 E
 1395' FSL & 1080' FEL
 LOCATED IN THE NE/4 SE/4 OF
 SECTION 31, T27N, R10W, N.M.P.M.,
 SAN JUAN COUNTY, NEW MEXICO
 GROUND ELEVATION: 6086', NAVD 88
 FINISHED PAD ELEVATION: 6086.4', NAVD 88



330' X 400' = 3.03 ACRES OF DISTURBANCE
 SCALE: 1" = 60'
 JOB No.: COPC015
 DATE: 07/12/06

NOTE:
 RESERVE PIT DIKE: TO BE 8' ABOVE DEEP SIDE (OVERFLOW - 3' WIDE AND 1' ABOVE SHALLOW SIDE).
 RUSSELL SURVEYING, INC. IS NOT LIABLE FOR UNDERGROUND UTILITIES OR PIPELINES.
 CONTRACTOR SHOULD CALL ONE-CALL FOR LOCATION OF ANY MARKED OR UNMARKED, BURIED PIPELINES OR CABLES ON WELL PAD, IN CONSTRUCTION ZONE AND/OR ACCESS ROAD AT LEAST TWO (2) WORKING DAYS PRIOR TO CONSTRUCTION.

 **Russell Surveying**
 1409 W. Aztec Blvd. #5
 Aztec, New Mexico 87410
 (505) 334-8637

BURLINGTON RESOURCES O&G CO LP

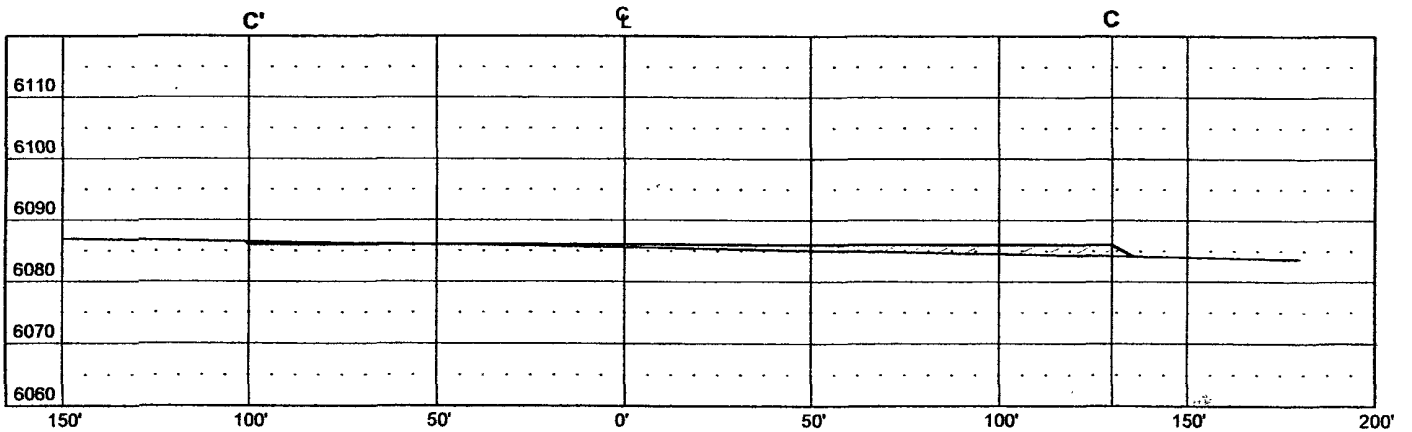
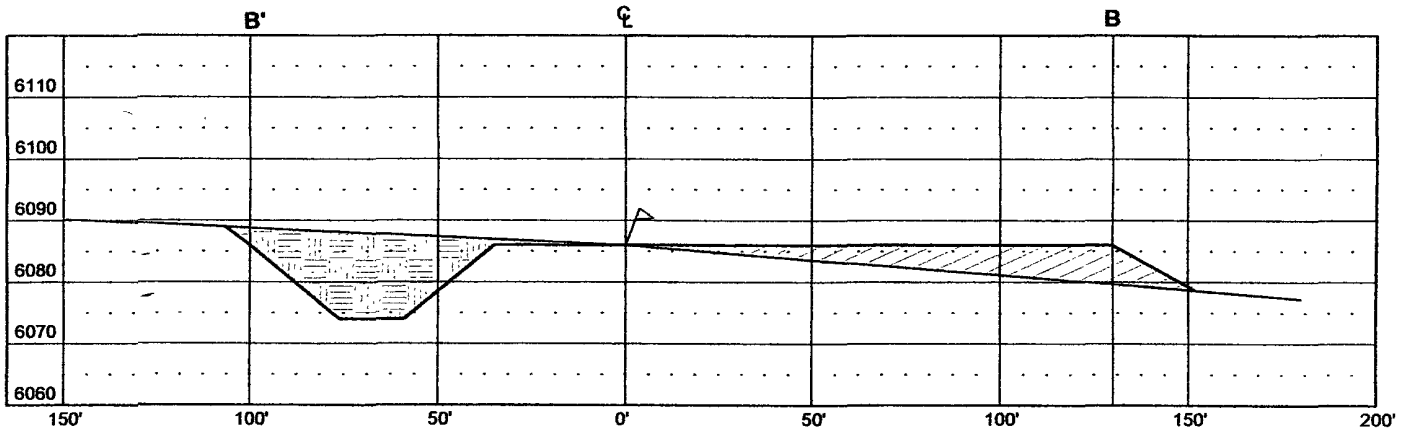
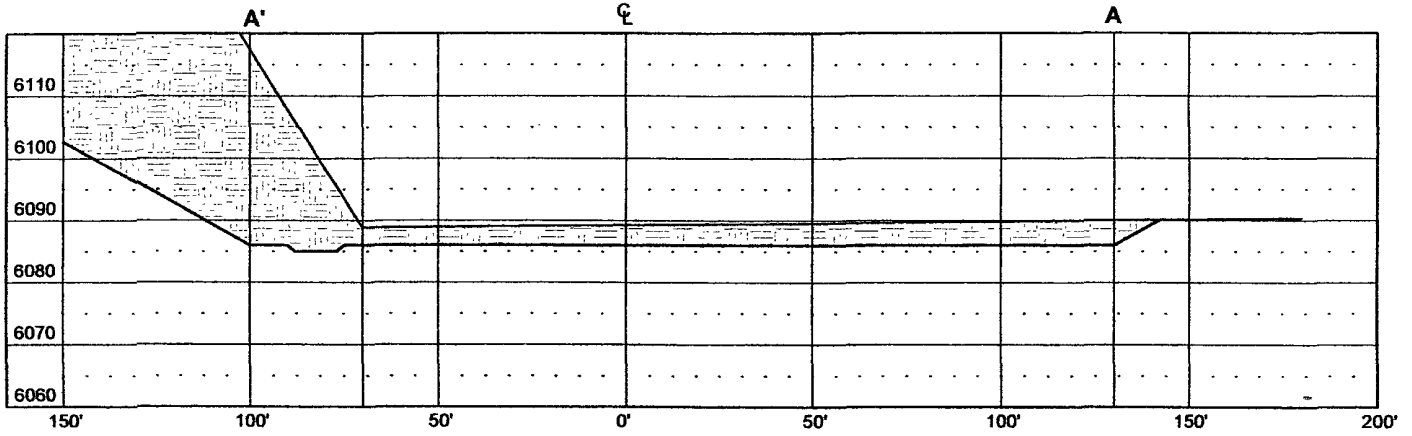
HUERFANO UNIT #282 E

1395' FSL & 1080' FEL

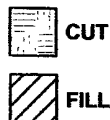
LOCATED IN THE NE/4 SE/4 OF
SECTION 31, T27N, R10W, N.M.P.M.,
SAN JUAN COUNTY, NEW MEXICO


GROUND ELEVATION: 6086', NAVD 88

FINISHED PAD ELEVATION: 6086.4', NAVD 88



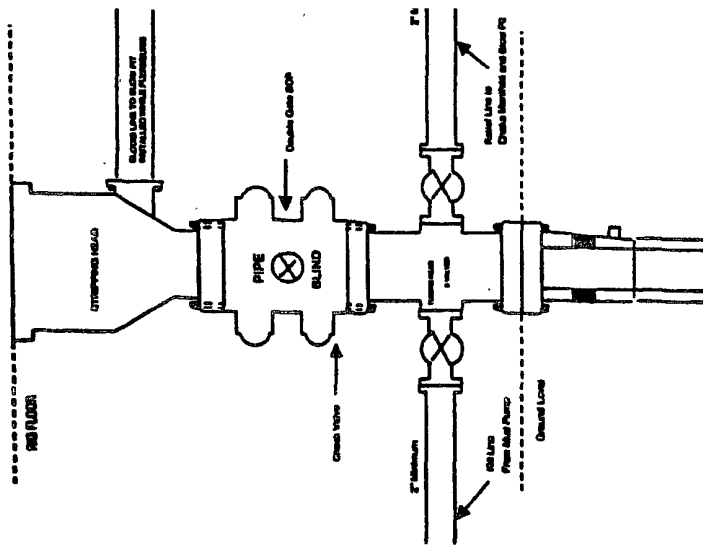
VERT. SCALE: 1" = 30'
HORZ. SCALE: 1" = 50'
JOB No.: COPC015
DATE: 07/12/06



 **Russell Surveying**
1409 W. Aztec Blvd. #5
Aztec, New Mexico 87410
(505) 334-8637

BURLINGTON RESOURCES

**Completion/Workover Rig
BOP Configuration
2,000 psi System**

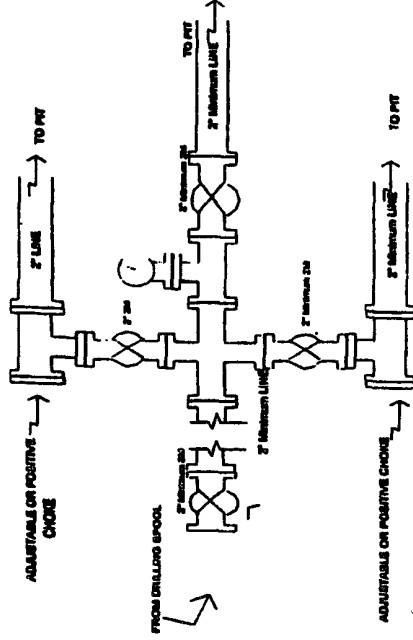


Minimum BOP installation for all Completion/Workover Operations. 7-1/16" bore, 2000 psi minimum working pressure double gate BOP to be equipped with blind and pipe rams. A stripping head to be installed on the top of the BOP. All BOP equipment is 2000 psi working pressure or greater excluding 800 psi stripping head.

Figure #2

BURLINGTON RESOURCES

**Drilling Rig
Choke Manifold Configuration
2000 psi System**

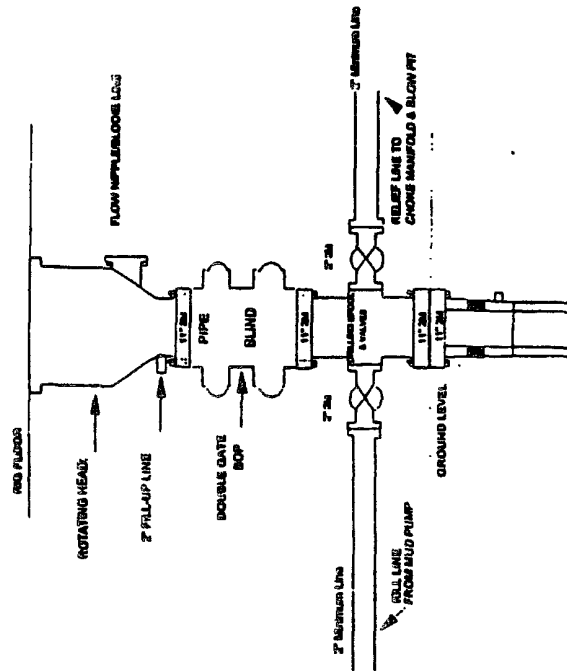


Choke manifold installation from Surface Casing Point to Total Depth. 2,000psi working pressure equipment with two chokes.

Figure #3

Burlington Resources

**Drilling Rig
2000 psi System**



BOP installation from Surface Casing Point to Total Depth. 1 1/8" Bore 10" Nominal, 2000 psi working pressure double gate BOP to be equipped with blind rams and pipe rams. A 500 psi ramming head on top of ram preventers. All BOP equipment is 2,000 psi working pressure.

Figure #1