

UNITED STATES
DEPARTMENT OF THE INTERIOR
BUREAU OF LAND MANAGEMENT

Sundry Notices and Reports on Wells

1. Type of Well
GAS

2. Name of Operator
BURLINGTON
RESOURCES OIL & GAS COMPANY LP

3. Address & Phone No. of Operator

P.O. Box 4289, Farmington, NM 87499

4. Location of Well, Footage, Sec., T, R, M

Unit P (SESE), 1165' FSL & 790' FEL, Section 10, T31N, R10W, NMPM

RECEIVED

MAR 14 2008

Bureau of Land Management
Farmington Field Office

5. Lease Number
NM-014110

6. If Indian, All. or
Tribe Name

7. Unit Agreement Name

8. Well Name & Number
Walker Koch 2A

9. API Well No.

30-045-21693

10. Field and Pool
Blanco Mesaverde
Blanco Pictured Cliffs

11. County and State
San Juan Co., NM

12. CHECK APPROPRIATE BOX TO INDICATE NATURE OF NOTICE, REPORT, OTHER DATA

Type of Submission

☒ Notice of Intent

☐ Subsequent Report

☐ Final Abandonment

Type of Action

☐ Abandonment

☐ Recompletion

☐ Plugging

☐ Casing Repair

☐ Altering Casing

☐ Change of Plans

☐ New Construction

☐ Non-Routine Fracturing

☐ Water Shut off

☐ Conversion to Injection

☒ Other - Casing Clean out / MIT

13. Describe Proposed or Completed Operations

Burlington Resources wishes to clean out casing and perform MIT per attached procedures.

RCVD MAR 21 '08

OIL CONS. DIV.

14. I hereby certify that the foregoing is true and correct.

DIST. 3

Signed Tamra Sessions Tamra Sessions Title Regulatory Technician Date 3/13/2008

(This space for Federal or State Office use)

APPROVED BY Wayne Wansford Title P.C. Eng. Date 3-19-08

CONDITION OF APPROVAL, if any:

Title 18 U.S.C. Section 1001, makes it a crime for any person knowingly and willfully to make any department or agency of the United States any false, fictitious or fraudulent statements or representations as to any matter within its jurisdiction

SEE ATTACHED FOR
CONDITIONS OF APPROVAL

INMOCD 8

**ConocoPhillips
Walker Koch #2A
Clean out**

Lat 36° 54' 32.16" N Long 107° 51' 46.68" W

Prepared By: Ben Kelly Date: 03/06/08
BAE Peer review/approved By: Stan Terwilliger Date: 03/07/08

Scope of work: Pull tubing, clean out to PBTD, and Replace any bad joints. Perform MIT.

Est. Cost:

Est. Rig Days: 4

WELL DATA:

API: 30-045-21693

Location: 1165' FSL & 790' FEL, P-10-031N-010W

PBTD: 5472' **TD:** 5507'

Perforations: 2906'-2952', (PC) 4456'-4608', 4650'-4818', 4868'- 5042', 5176'-5461' (MV)

Well History: Well was spud in 1975. The well has produced event free until Sept 2007. Coil tubing was used to clean out fill and restore production to 250 Mcfd. The well produced at this volume until Jan 2008 when Coil tubing was utilized again to clean out. The coil tubing job in Jan 2008 was unsuccessful. Pulling the tubing and cleaning out the fill should restore production to 200+ Mcfd.

B2 Adapters are required on all wells other than pumping wells.

Artificial lift on well (type): None

Est. Reservoir Pressure (psig): 350psi (MV)

Well Failure Date: 1/15/2008

Current Rate (Mcfd): 0 mcfd **Est. Rate Post Remedial (Mcfd):** 200 mcfd

Earthen Pit Required: NO

Special Requirements: Several joints of 2-3/8" tubing for replacements

BAE Production Engineer: Ben Kelly, Office: (505) 599 3432, Cell: (505) 320 8099

BAE Backup: Kassadie Gastgeb, Office: (505) 324 5145, Cell: (505) 793 6312

MSO: Robert Paddack Cell # (505) 320-2482

Lead: Jim Peace Cell # (505) 320 0210

**ConocoPhillips
Walker Koch #2A
Clean out**

Lat 36° 54' 32.16" N Long 107° 51' 46.68" W

PROCEDURE:

1. Hold pre-job safety meeting. Comply with all NMOCD, BLM, and COPC safety and environmental regulations. Test rig anchors prior to moving in rig.
2. MIRU workover rig. Check casing, tubing, and bradenhead pressures and record them in Wellview.
3. RU blow lines from casing valves and begin blowing down casing pressure. Kill well with 2% KCl if necessary. ND wellhead and NU BOPE.
4. PU and release tubing hanger and tag for fill, adding additional joints as needed. PBTD is at **5472'**. Indicate fill depth in Wellview.
5. TOOH w/ 2-3/8", 4.7#, EUE tubing string. Visually inspect tubing and record findings in Wellview. Make note of corrosion or scale. LD and replace any bad joints.
6. PU Baker Full Bore packer and perform MIT on 7" 23# casing from 2840' to surface. Hold 500psi for 30 minutes. If test fails be prepared to squeeze. Contact engineer for squeeze volumes and procedure.
7. PU tubing bailer, TIH, and bail fill to PBTD = 5472'. If unable to bail fill, PU air package to clean out. If scale on tubing, spot acid. Contact Rig Superintendent and Engineer for acid volume, concentration, and tubing volume. TOOH.
8. RIH with the following 2-3/8" production string:

Bottom to Top
1) (1) Joint 2 3/8" 4.70#, J-55 EUE 8rd tubing with (full open) pump out plug.
2) 2-3/8" F-Nipple (1.78" ID)
3) 2-3/8" 4.70#, J-55 EUE 8rd tubing to surface (+/- 168 jts)
9. Land the tubing so the **F-Nipple** is at +/- **5390'**
10. Load tubing with water and test tubing to 1000 psig. Hold 1000psi for 30 minutes.
11. Contact MSO of finished project so that he can return well to production with Plunger lift.

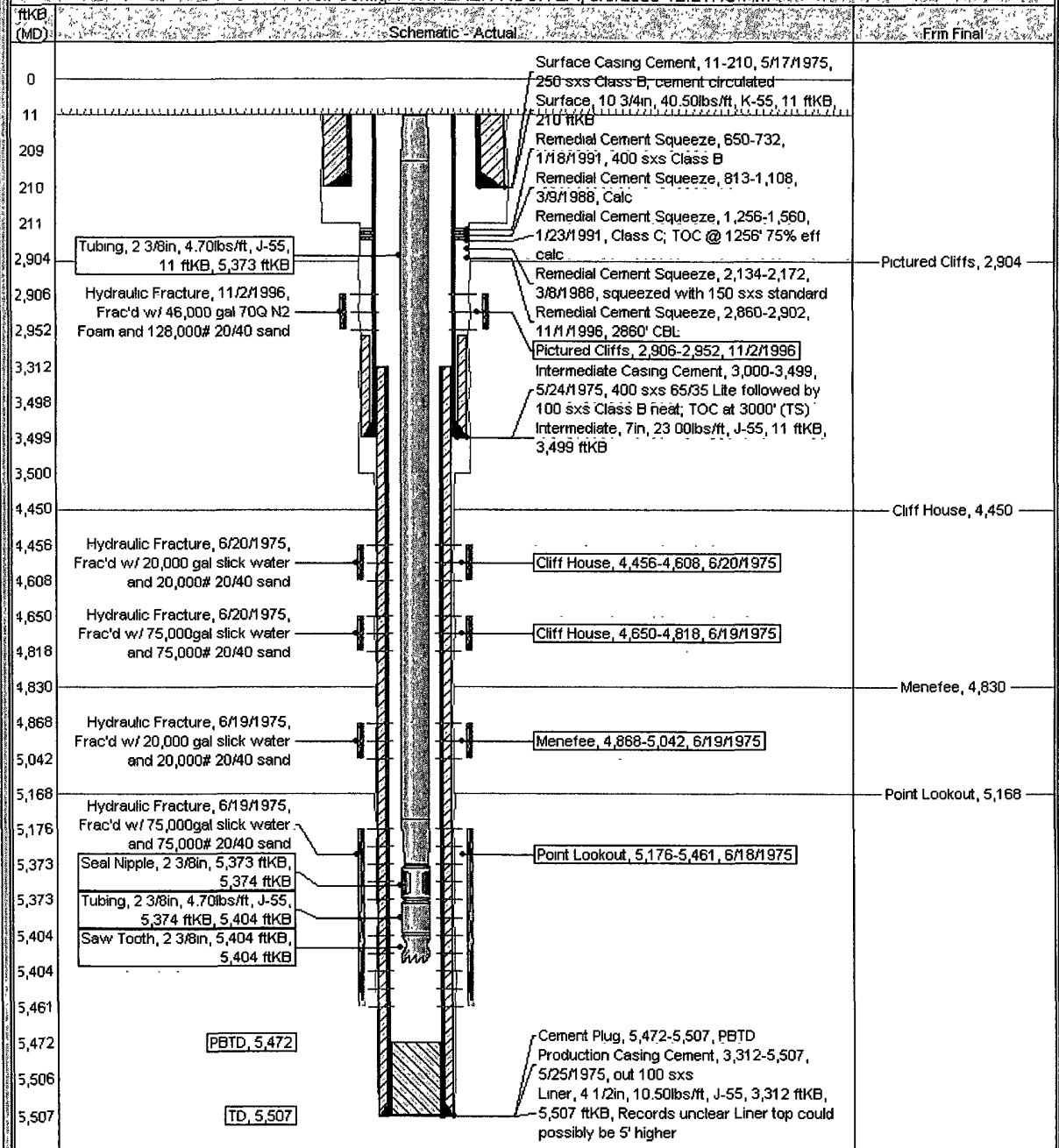
Current Schematic - Revised

ConocoPhillips

Well Name: WALKER KOCH #2A

API/ UWI	Surface Legal Location	Field Name	License No.	State/Province	Well Configuration Type	Edit
3004521693	NMPM 010-031N-010W	BLANCO MESA VERDE (REPAIRED)		NEW MEXICO		
Ground Elevation (ft)	Original Rd Elevation (ft)	Rd-Grout Distance (ft)	Rd-Casing Flange Distance (ft)	Rd-Tubing Hanger Distance (ft)		
6,132.00	6,143.00	14.00				

Well Config: WALKER KOCH 2A, 3/6/2008 12:21:16 PM



BLM CONDITIONS OF APPROVAL

WORKOVER AND RECOMPLETION OPERATIONS:

- 1. A properly functioning BOP and related equipment must be installed prior to commencing workover and/or recompletion operations.**
- 2. If this well is in a Seasonal Closure Area, adhere to the closure requirements and timeframes.**
- 3. If casing repair operations are needed, obtain prior approval from this office before commencing repairs**

SURFACE USE OPERATIONS:

The following Stipulations will apply to this well unless a particular Surface Managing Agency or private surface owner has supplied to BLM and operator a contradictory environmental stipulation. The failure of operator to comply with these requirements may result in assessments or penalties pursuant to 43 CFR 3163.1 or 3163.2. A copy of these conditions of approval shall be present on location during construction, drilling and reclamation activity.

An agreement between operator and fee landowner will take precedence over BLM surface stipulations unless (in reference to 43 CFR Part 3160) 1) BLM determines that operator's actions will affect adjacent Federal or Indian surface, or 2) operator does not maintain well area and lease premises in a workmanlike manner with due regard for safety, conservation and appearance, or 3) no such agreement exists, or 4) in the event of well abandonment, minimal Federal restoration requirements will be required.

STANDARD STIPULATIONS: All surface areas disturbed during work-over activities and not in use for production activities will be reseeded. This should occur in the first 90 days after completion of workover activities.

SPECIAL STIPULATIONS:

- 1. Pits will be fenced during workover operation.**
- 2. All disturbance will be kept on existing pad.**
- 3. All pits will be pulled and closed immediately upon completion of the workover activities.**
- 4. Pits will be lined with an impervious material at least 12 mils thick.**