

UNITED STATES  
DEPARTMENT OF INTERIOR  
BUREAU OF LAND MANAGEMENT

FORM APPROVED  
Budget Bureau No. 1004-0135  
Expires: March 31, 1993

SUNDRY NOTICE AND REPORTS ON WELLS

Do not use this form for proposals to drill or to deepen or reentry to a different reservoir. Use "APPLICATION TO DRILL" for permit for such proposals

SUBMIT IN TRIPLICATE

RECEIVED

MAR 24 2008

Bureau of Land Management  
Farmington Field Office

1. Type of Well  
Oil Well ☒ Gas Well ☐ Other ☐

2. Name of Operator  
WILLIAMS PRODUCTION COMPANY

3. Address and Telephone No.  
PO BOX 3102 MS 25-4, TULSA, OK 74101 (918) 573-3046

4. Location of Well (Footage, Sec., T., R., M., or Survey Description)  
2010' FNL & 2170' FWL, SE/4 NW/4 SEC 26-T31N-R06W

5. Lease Designation and Serial No.  
SF-078771

6. If Indian, Allottee or Tribe Name

7. If Unit or CA, Agreement Designation  
ROSA UNIT

8. Well Name and No.  
ROSA UNIT #8B

9. API Well No.  
30-039-26632

10. Field and Pool, or Exploratory Area  
BLANCO MV

11. County or Parish, State  
RIO ARRIBA, NM

CHECK APPROPRIATE BOX(s) TO INDICATE NATURE OF NOTICE, REPORT, OR OTHER DATA

TYPE OF SUBMISSION

TYPE OF ACTION

Notice of Intent

☒ Subsequent Report

Final Abandonment

☒ Temporary Abandonment  
Recompletion  
Plugging Back  
Casing Repair  
Altering Casing  
Other \_\_\_\_\_

Change of Plans  
New Construction  
Non-Routine Fracturing  
Water Shut-Off  
Conversion to Injection  
Dispose Water  
(Note: Report results of multiple completion on Well Completion or Recompletion Report and Log form.)

13. Describe Proposed or Completed Operations (Clearly state all pertinent details, and give pertinent dates, including estimated date of starting any proposed work. If well is directionally drilled, give subsurface locations and measured and true vertical depths for all markers and zones pertinent to this work.)\*

This is a subsequent sundry to request a 1 year extension for Temporary Abandonment (TA) of the Dakota formation in the Rosa 8B. The TA was completed in December 2006; a subsequent sundry to request a 1 year extension for the TA was not filed in 2007.

The TA was originally granted for two reasons; 1) could not retrieve the Dakota tail pipe below the production packer and it would require milling the production packer to clean out and 2) evaluation for potential commingle based on results from commingles completed on the Rosa 30 and Rosa 125E. It is our intention to evaluate the Dakota production and re-complete or P&A the formation in 2008. Before the temporary abandonment the Dakota produced 0 Mcfd and the Mesa Verde is currently averaging 90 Mcfd.

RCVD MAR 28 '08

Attached are a wellbore schematic and the original completion/TA recap with bridge plug depths and recorded integrity tests.

OIL CONS. DIV.

DIST. 3

14. I hereby certify that the foregoing is true and correct

Signed

Rachel Lipperd

Title Engineering Technician

Date March 20, 2008

ACCEPTED FOR RECORD

(This space for Federal or State office use)

MAR 26 2008

Approved by

Title

Date

FARMINGTON FIELD OFFICE

Conditions of approval, if any:

Title 18 U.S.C. Section 1001, makes it a crime for any person knowingly and willfully to make to any department or agency of the United States any false, fictitious or fraudulent statements or representations as to any matter within its jurisdiction.

NMOCD

## **Temporary Abandonment Extension Request**

March 20, 2008

### **Rosa Unit #8B**

2010' FNL, 2170' FEL, SE/4 NW/4, Section 26, T31N, R6W  
Rio Arriba County, NM API 30-039-26632

This is a subsequent sundry to request a 1 year extension for Temporary Abandonment (TA) of the Dakota formation in the Rosa 8B. The TA was completed in December 2006; a subsequent sundry to request a 1 year extension for the TA was not filed in 2007.

The TA was originally granted for two reasons; 1) could not retrieve the Dakota tail pipe below the production packer and it would require milling the production packer to clean out and 2) evaluation for potential commingle based on results from commingles completed on the Rosa 30 and Rosa 125E. It is our intention to evaluate the Dakota production and re-complete or P&A the formation in 2008. Before the temporary abandonment the Dakota produced 0 Mcfd and the Mesa Verde is currently averaging 90 Mcfd.

Attached are a wellbore schematic and the original completion/TA recap with bridge plug depths and recorded integrity tests.

## ROSA UNIT #8B WORKOVER RECAP

12-02-2005

MIRU. RU Phoenix WL, TIH, 2 1/16" LS tbg was standard 1.7" gauge ring, stopped @ 94'. TIH w/ 1.5" gauge ring & stopped @ 5812', located fluid level @ 1500'. TIH w/ 2 1/16" SS tbg w/ standard 1.7" gauge ring, stopped @ 31'. TIH w/ 1.5" gauge ring, stopped @ 5793'. Located fluid level @ 3200'. RD Phoenix WL. Bled down 190 psi on SS & 20 psi on LS tbg. ND tree, NU BOP, offset spool & tbg stripper. NU blow back tank, circulating pump & air package. RU to pull 2 1/16" SS tbg, unlanded SS. TIH w/ SS & tagged top of fill @ 3010' = 25' fill on top of pkr @ 6035'. TOO H w/ 2 1/16" SS tbg, measured out of hole. Recovered 180 jts 2 1/16" IJ tbg w/ SN 1 jt off bottom w/ no perforated sub or mule shoe. Located 1 crimped jt of tbg, no indication of scale. SDFN.

12-03-2005

Rig idle

12-04-2005

Rig idle

12-05-2005

Csg psi = 380. Bled down csg & pumped minimal 2% KCl to kill well. MU 2 1/16" mule shoe & TIH w/ same on SS tbg. Tagged top of sand fill @ 6010'. NU air package, broke circulation with 10 bph air/soap/corrosion inhibitor. Displaced 30 bbls formation water w/ air. Circulated sand fill from 6010' to top of production packer at 6035', sand hard packed. Circulated wellbore clean and made soap sweeps. TOO H w/ 2 1/16" SS, blowing hard up tbg. Had to kill several times coming out of hole. Reversed off-set pipe rams, RU to pull 2 1/16" LS tbg. Unlanded tubing and found long string tubing stuck in sand. Worked pipe at 34000#, unable to go down hole. Worked up hole 25', pipe moving up hole at 30K, pulled 5' & pipe parted. TOO H w/ 2 1/16" tbg. Recovered 18' pups, 76 jts tbg & a 1' piece = 2508'. Pipe parted 1' below box, very clean break. Pipe appears to have some inside corrosion & a layer of scale. Will begin fishing in morning. Made well safe until morning, SDFN.

12-06-2005

390 psi csg pressure, bled down & kill w/ 2% KCl. MU 4 11/16" overshot w/ 2 1/16" basket grapple, 4 11/16" extension, 3 3/4" bumper sub, 3 3/4" jar & 4 x 3 1/2" DC's, TIH w/ same on work string. Engaged fish @ 2508', worked fish up hole 9' without setting off jars. Pulled 35000# & got moving up hole 6" at a pull. Slacked off & repeated, worked up hole 9' & parted. TOO H w/ work string & fishing assembly, recovered 21' section of tbg, leaving TOF @ 2478', 9' stub looking up. Made well safe for night, SDFN.

12-07-2005

Csg pressure = 260 psi, bled down & killed w/ minimal 2% KCL. MU 4 11/16" overshot w/ 2" basket grapple w/ pack off & control, 3' extension, 3 3/4" bumper sub, 3 3/4" jars & 4 x 3 1/2" DC's. TIH w/ same on 2 3/8" work string tbg, singled out drill line, NU power swivel. Engaged TOF @ 2478'. NU air package, unable to break circulation through work string. Pulled @ 30,000#, worked up hole 15', slacking off, made 6" each time pipe worked. Pipe parted @ 30000 pull. ND power swivel. TOO H w/ work string tbg & fishing assembly. Killed well w/ 2% KCL. TOO H w/ fish, recovered 13' section of pipe & 44 jts. Pin pulled out of box, leaving box to fish. Total pipe recovered to date = 121 jts, leaving 116 jts 2 11/16" in hole w/ 60 jts above seal assembly & 56 jts below seal assembly. Seal assembly 44' above pkr. MU 4 11/16" overshot w/ 2 15/16" basket grapple w/ pack off & control, 3' extension, 3 3/4" bumper sub, 3 3/4" jars & 4 x 3 1/2" DC's/ TOH w/ same on work string, PU 44 singles & hung well off @ 3900'. SDFN.

12-08-2005

Csg pressure = 260 psi & tbg pressure = 250 psi, bled down tbg, TIH, engage fish @ 3792', unable to break circulation with air. Work stuck tbg up & down without settings off jars, making 6" each pull, working tbg @ 28000#, parted. TOO H w/ work string & fishing assembly. Recovered 62 jts plus 15'. Leaving TOF @ 6002'. MU 4 11/16" overshot w/ 2" basket grapple w/ 3' extension & pack off, 3 3/4" bumper sub, 3 3/4" jars & 4 x 3 1/2" DC's. TIH w/ same on work string. Hung tbg off @ 4900', above all perforations. SDFN.

12-09-2005

Csg pressure = 250 psi, tbq pressure = 220 psi. Bled down tbq & killed w/ minimal 2% KCL. TIH w/ fishing assembly, engaged fish @ 6002', worked fish, unable to get moving without jars. Jarring on fish @ 30000#, jarred free. TOOH w/ 2 3/8" work string & fishing assembly. Recovered 15' section of 2 1/16" tbq, leaving 3' section looking up. TOF @ 6017'. Fish top tapered down to 1 15/16" fishing neck w/ 3' to box or seal assembly. MU 4 11/16" overshot w/ 1 15/16" basket grapple w/ 3' extension, 3 3/4" bumper sub, 3 3/4" jars & 4 x 3 1/2" DC's, TIH w/ same on work string. Engaged fish @ 6017', work stuck 2 1/16" tbq, set jars off @ 30,000#, jarred free, TOOH w/ work string & fishing assembly. Recovered 2' section of 2 1/16" tbq. Parted in the body, leaving body looking up w/ fishing neck looking up. Break down & load out fishing tools. SDFN.

12-10-2005

Rig idle

12-11-2005

Rig idle

12-12-2005

CSG pressure = 550 psi, bled down & kill with minimal 2% KCL. TIH w/ 100 sgls 2 1/16" tbq from derrick. TOOH w/ 100 sgls 2 1/16" tbq in singles. MU Weatherford TS RBP in tandem w/ aero set S-1 5 1/2", 17# pkr. TIH w/ same on work string. Set RBP @ 5970' = 49' above 2 1/16" fish. TUH, set pkr @ 5925'. Unable to fill tbq w/ water. Moved pkr to 5895', unable to get solid test. Moved pkr various settings w/ last setting depth @ 5933'. Catching pressure but unable to pressure up. TOOH w/ pkr. TIH w/ exchange pkr on 2 3/8" work string. Set pkr @ 5886' = 12' below bottom PLO perfs. RU pressure pump, pressured up to 700 psi, made 30 min pressure test w/ chart. Pressured to 700 psi, bled to 650 psi in 30 min, good test. RD test unit. Released pkr & TUH, hung well off above all perforations @ 4900', SDFN.

12-13-2005

CSG pressure = 260 psi, tbq pressure = 240 psi. Bled well down. Killed tbq w/ 2% KCL. TOOH w/ work string. Broke down & loaded out pkr equipment. TIH w/ remainder of 2 3/8" tbq & DC's. Singled down w/ 2 3/8" tbq & DC's. TIH w/ 150 stds of 2 1/16" tbq, TOOH w/ 200 jts 2 1/16" tbq, singled down w/ same. SDFN.

12-14-2005

Csg pressure = 250 psi, bled down, killed down tbq w/ minimal 2% KCL. TOOH, singled down w/ 100 jts of 2 1/16" tbq. Sent 360 jts tbq to Tuboscope for inspection. MU 2 3/8" x 4' bull nosed perforated pup, 1 jt tbq, 1.5" SN w/ expendable check, TIH w/ same on new 2 3/8", 4.7#, J-55, 8rd EUE production string. Landed tbq @ 5871', SN @ 5864'. ND BOP, NU WH, pressure test tbq hanger, wellhead & tree @ 3500 psi, solid test. RU air package, pumped off check @ 800 psi, unload wellbore of water. ND air package, flowback tank & circulating pump. Turn well to production department, release rig @ 1630 hrs. Move to Rosa Unit #91B.

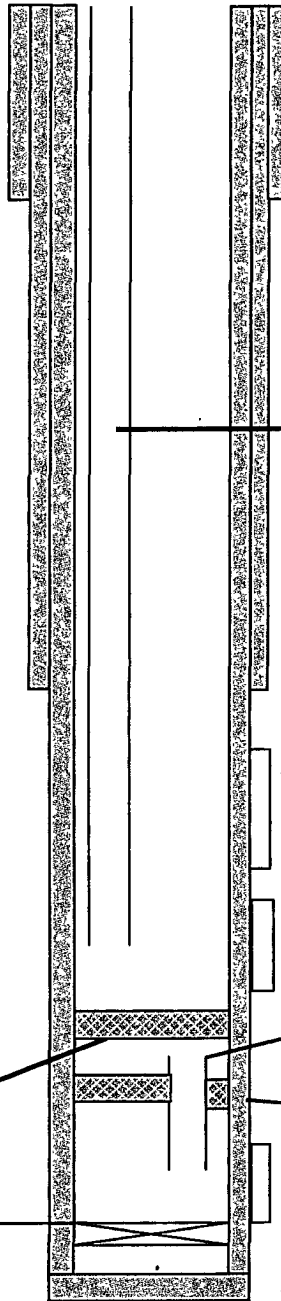
# **ROSA UNIT #8B** **BLANCO MV/BASIN DK**

**Location:** 2010' FNL, 2170' FEL  
 SE/4 NW/4 Section 26(F), T31N, R6W  
 Rio Arriba Co., NM  
 API No. 3003926632

**Elevation:** 6311' GR

Spud Date 10-10-01  
 Completed 12-08-01  
 ID'd 1-31-02

<i>Tops</i>	<i>Depth</i>
Kirtland	2515'
Pictured Cliffs	3318'
Cliff House	5271'
Point Lookout	5582'
Mancos	6083'
Dakota	7803'

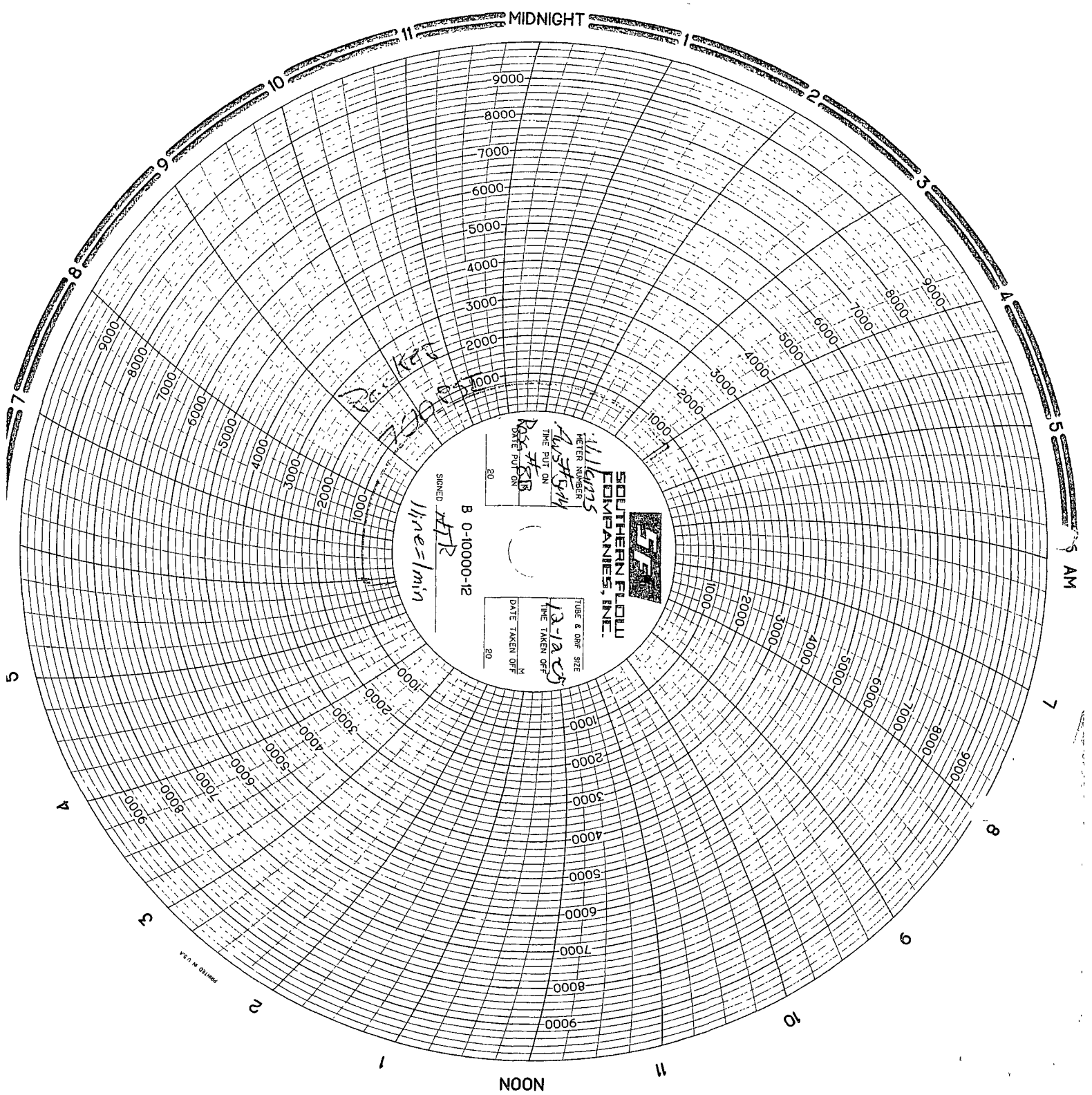


CliffHouse/Menefee 4986' - 5532' (31, 0.38" holes)  
 80,000# of 20/40 sand in 1886 BBI's slick water.

Point Lookout 5584' - 5874' (41, 0.38" holes)  
 80,000# of 20/40 sand in 1893 BBI's slick water.

Dakota 7805' - 7940' (23, 0.38" holes)  
 80,000# of 20/40 Acfrac SB Excel resin coated proppant  
 carried in 60Q Spectre G foam

HOLE SIZE	CASING	CEMENT	VOLUME	CMT TOP
14 3/4"	10 3/4"	225 sx	317 cu.ft.	230'
9 7/8"	7 5/8"	830 sx	1557 cu.ft.	surface
6 3/4"	5 1/2"	335 sx	692 cu.ft.	3570'



11-12-54  
11-12-54  
11-12-54  
11-12-54  
11-12-54  
11-12-54  
11-12-54  
11-12-54  
11-12-54  
11-12-54  
11-12-54  
11-12-54

11-12-54  
11-12-54  
11-12-54  
11-12-54  
11-12-54  
11-12-54  
11-12-54  
11-12-54  
11-12-54  
11-12-54  
11-12-54  
11-12-54

11-12-54  
11-12-54  
11-12-54  
11-12-54  
11-12-54  
11-12-54  
11-12-54  
11-12-54  
11-12-54  
11-12-54  
11-12-54  
11-12-54

**SOUTHERN FIDELITY**  
**EDMUNDS, INC.**

B 0-10000-12

SIGNED *HLR*

11-12-54

TUBE & ORIF. SIZE  
13-12-54  
TIME TAKEN OFF  
DATE TAKEN OFF

PRINTED IN U.S.A.