

59 - 30-039-07208  
62 - 30-039-07202

DATA SHEET FOR DEEP GROUND BED CATHODIC PROTECTION WELLS  
NORTHWESTERN NEW MEXICO  
(Submit 3 copies to OCD Aztec Office)

Operator MERIDIAN OIL Location: Unit NE Sec. 6 Twp 27 Rng 5

Name of Well/Wells or Pipeline Serviced SAN JUAN 27-5 UNIT #59, #62

cps 741w

Elevation 6494' Completion Date 7/17/72 Total Depth 280' Land Type\* N/A

Casing, Sizes, Types & Depths N/A

If Casing is cemented, show amounts & types used N/A

If Cement or Bentonite Plugs have been placed, show depths & amounts used

N/A

Depths & thickness of water zones with description of water when possible:

Fresh, Clear, Salty, Sulphur, Etc. 40'

Depths gas encountered: N/A

Type & amount of coke breeze used: 2200 lbs.

Depths anodes placed: 195', 185', 175', 145', 135', 125', 115', 105', 95', 60', 50'

Depths vent pipes placed: N/A

Vent pipe perforations: 195'

Remarks: qb #2

RECEIVED  
MAY 21 1991  
OIL CON. DIV.  
DIST. 3

If any of the above data is unavailable, please indicate so. Copies of all logs, including Drillers Log, Water Analyses & Well Bore Schematics should be submitted when available. Unplugged abandoned wells are to be included.

\*Land Type may be shown: F-Federal; I-Indian; S-State; P-Fee.  
If Federal or Indian, add Lease Number.

WELL CASING  
CATHODIC PROTECTION CONSTRUCTION REPORT  
DAILY LOG

*Logg*

Drilling Log (Attach Hereto). ☐

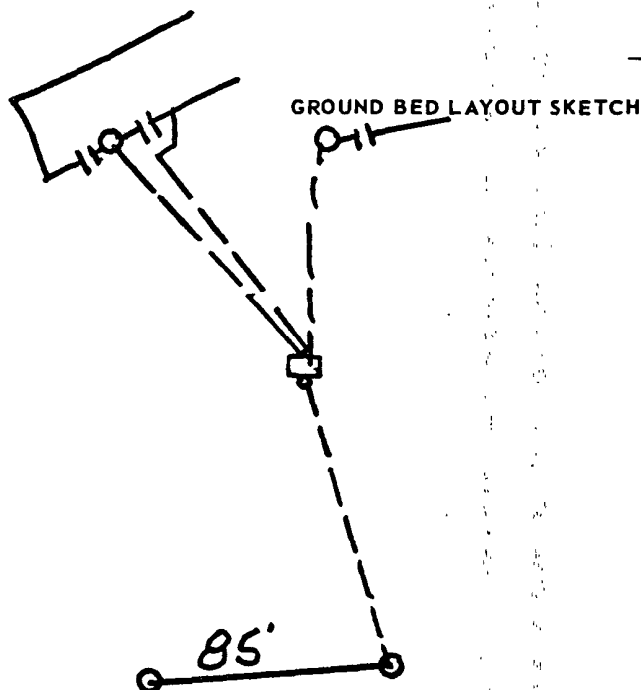
Completion Date 7-17-72

Well Name <b>SJ 27-5 #59 &amp; 62</b>		Location <b>NE6-27-5</b>		CPS No. <b>741 W</b>	
Type & Size Bit Used <b>6 3/4</b>				Work Order No. <b>54006</b> <b>184-54069-50-20</b>	
Anode Hole Depth <b>280'</b>	Total Drilling Rig Time	Total Lbs. Coke Used <b>EST 2200</b>	Lost Circulation Mat'l Used	No. Sacks Mud Used	
Anode Depth					
# 1 <b>195</b>	# 2 <b>185</b>	# 3 <b>175</b>	# 4 <b>145</b>	# 5 <b>135</b>	# 6 <b>125</b>
# 7 <b>115</b>	# 8 <b>105</b>	# 9 <b>95</b>	# 10 <b>60</b>		
Anode Output (Amps)					
# 1 <b>3.8</b>	# 2 <b>4.0</b>	# 3 <b>3.4</b>	# 4 <b>2.5</b>	# 5 <b>3.5</b>	# 6 <b>3.6</b>
# 7 <b>4.2</b>	# 8 <b>3.5</b>	# 9 <b>3.9</b>	# 10 <b>3.4</b>		
Anode Depth					
# 11 <b>50</b>	# 12 <b>40</b>	# 13	# 14	# 15	# 16
# 17	# 18	# 19	# 20		
Anode Output (Amps)					
# 11 <b>4.2</b>	# 12 <b>2.8</b>	# 13	# 14	# 15	# 16
# 17	# 18	# 19	# 20		
Total Circuit Resistance		No. 8 C.P. Cable Used		No. 2 C.P. Cable Used	
Volts <b>11.8</b>	Amps <b>14.0</b>	Ohms <b>0.84</b>			

Remarks: Driller said water at 40' water level over  
night at 70'-  
Vent Perforated all 195'  
Pump 2755 hours

All Construction Completed

*Paul H. Darrells*  
(Signature)



741W DAILY DRILLING REPORT

SIGNED: Toolpusher

Aut. Mon.

Company Supervisor

225  
220029.0 V 15.0 A  
741 W -

X = 19.0

240 TD

MW	gas/mol
15	6.4
30	9.56
45	12.8
60	16.0
75	19.2
90	22.4
105	25.6
120	28.8
135	32.0
150	35.2
165	38.4
180	41.6
195	44.8
210	48.0
225	51.2
240	54.4
255	57.6
270	60.8
285	64.0
300	67.2

MW	gas/mol
44	6.38
54	7.7
64	9.08
74	10.46
84	11.84
94	13.22
104	14.6
114	15.98
124	17.36
134	18.74
144	20.12
154	21.5
164	22.88
174	24.26
184	25.64
194	27.02
204	28.4
214	29.78
224	31.16
234	32.54
244	33.92
254	35.3
264	36.68
274	38.06
284	39.44
294	40.82
304	42.2

30	1.7			20	8					Driller said wtr. at 30'
35	1.8				8					Blew out of Hole at 40'
40	1.8									Drill - 7-16-72 - wtr. at 70' on
45	1.6									7-17-72 -
50	2.2			30	1.0					UCWT Perf. All
	3.0			33	2.4	Bar				Pump 275 shovels
60	2.1			40						
	1.4									
70	6" wtr. level			45						
	6"									
80	7"			60						
	5"									
90	6"			70			1	1.95	1.7	3.8
	2.2						2	1.85	1.8	4.0
100	2.8			80			3	1.75	1.7	3.4
	7.0						4	1.45	1.2	2.6
110	2.3			90			5	1.35	1.8	3.5
	2.6						6	1.25	1.9	3.6
120	2.3						7	1.15	2.3	4.2
	2.2						8	1.05	1.9	3.5
130	2.3			10			9	.95	2.4	3.9
	2.1						10	.60	1.7	3.4
140	1.4			20			11	.50	2.4	4.2
	1.5						12	.40	1.5	2.8
150	.9									
	.7									
160	.5									
	1.3									
170	2.0									
	1.2									
180	1.8									
	2.1									
190	1.7									
	1.9									
200	1.2									
	1.0									
210	.9									
	.9									

11.8 X 14.0 A

140 11.30  
 1120  
 600  
 560