

UNITED STATES
DEPARTMENT OF THE INTERIOR
GEOLOGICAL SURVEY

APPLICATION FOR PERMIT TO DRILL, DEEPEN, OR PLUG BACK

1a. TYPE OF WORK

DRILL ☒DEEPEN ☐PLUG BACK ☐

b. TYPE OF WELL

OIL
WELL ☒GAS
WELL ☐

OTHER

SINGLE
ZONE ☐MULTIPLE
ZONE ☐

2. NAME OF OPERATOR

Tenneco Oil Company

3. ADDRESS OF OPERATOR

Box 1714, Durango, Colorado

4. LOCATION OF WELL (Report location clearly and in accordance with any State requirements.)*

At surface

990' FNL 2300' FWL

At proposed prod. zone

Unit C

14. DISTANCE IN MILES AND DIRECTION FROM NEAREST TOWN OR POST OFFICE*

30-033-20010

5. LEASE DESIGNATION AND SERIAL NO.
NM-081208

6. IF INDIAN, ALLOTTEE OR TRIBE NAME

7. UNIT AGREEMENT NAME

8. FARM OR LEASE NAME
Hospah

9. WELL NO.
10

10. FIELD AND (POOL, OR WILDCAT)
See Hospah Lower Sand

11. SEC., T., R., M., OR BLK.
AND SURVEY OR AREA
Sec. 12-T17N-R9W

12. COUNTY OR PARISH
McKinley

13. STATE
New Mexico

15. DISTANCE FROM PROPOSED*

LOCATION TO NEAREST
PROPERTY OR LEASE LINE, FT.
(Also to nearest drlg. unit line, if any)

16. NO. OF ACRES IN LEASE

40

17. NO. OF ACRES ASSIGNED
TO THIS WELL

NE NW/4 40 acres

18. DISTANCE FROM PROPOSED LOCATION*

TO NEAREST WELL, DRILLING, COMPLETED,
OR APPLIED FOR, ON THIS LEASE, FT.

19. PROPOSED DEPTH

2700'

20. ROTARY OR CABLE TOOL

Rotary

21. ELEVATION (Show whether DP, RT, GR, etc.)

7034' GR

22. APPROX. DATE WORK WILL START*

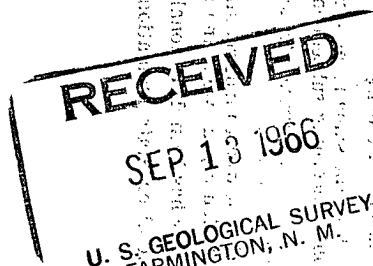
February 23, 1967

23.

PROPOSED CASING AND CEMENTING PROGRAM

SIZE OF HOLE	SIZE OF CASING	WEIGHT PER FOOT	SETTING DEPTH	QUANTITY OF CEMENT
12-1/4"	9-5/8"	32.40#	90'	Cement to surface 100 sx.
8-3/4"	7"	23#	2700'	Cement w/ 150 sx. cement.

We plan to drill to approximate T.D. 2700'. Run GRD and IES logs. Run casing as shown above. Complete as an oil well if productive. Run tubing and conduct potential test.



IN ABOVE SPACE DESCRIBE PROPOSED PROGRAM: If proposal is to deepen or plug back, give data on present productive zone and proposed new productive zone. If proposal is to drill or deepen directionally, give pertinent data on subsurface locations and measured and true vertical depths. Give blowout preventer program if any.

24.

SIGNED

Harold C. Nichols
Harold C. Nichols

TITLE

Senior Production Clerk

DATE

February 14, 1967

(This space for Federal or State office use)

PERMIT NO.

APPROVAL DATE

APPROVED BY

TITLE

DATE

CONDITIONS OF APPROVAL, IF ANY:

5-USGS
1-File

*See Instructions On Reverse Side

**NEW MEXICO OIL CONSERVATION COMMISSION
WELL LOCATION AND ACERAGE DEDICATION PLAT**

All distances must be from the outer boundaries of the Section

Operator TENNECO OIL COMPANY			Lease HOSPAN		Well No. 10
Unit Letter C	Section 12	Township 17 North	Range 9 West	County McKinley	
Actual Footage Location of Well: 990 feet from the North line and 2300 feet from the West line					
Ground Level Elev. 7034 GR.	Producing Formation Dakota So. Hoshpah Lower Sand		Pool Wildcat So. Hoshpah Lower Sand	Dedicated Acreage NE/4 40	Acres

- Outline the acreage dedicated to the subject well by colored pencil or hatchure marks on the plat below.
- If more than one lease is dedicated to the well, outline each and identify the ownership thereof (both as to working interest and royalty),
- If more than one lease of different ownership is dedicated to the well, have the interests of all owners been consolidated by communitization, unitization, force-pooling, etc?
() Yes () No If answer is "yes," type of consolidation

If answer is "no," list the owners and tract descriptions which have actually consolidated. (Use reverse side of this form if necessary.)

No allowable will be assigned to the well until all interests have been consolidated (by communitization, unitization, forced-pooling, or otherwise) or until a non standard unit, eliminating such interests, has been approved by the Commission.

CERTIFICATION

I hereby certify that the information contained herein is true and complete to the best of my knowledge and belief.

Harold C. Nichols
Name

Harold C. Nichols

Position

Senior Production Clerk

Company

Tenneco Oil Company

Date

February 14, 1967

I hereby certify that the well location shown on this plat was plotted from field notes of actual surveys made by me or under my supervision, and that the same is true and correct to the best of my knowledge and belief.

20 January 1967

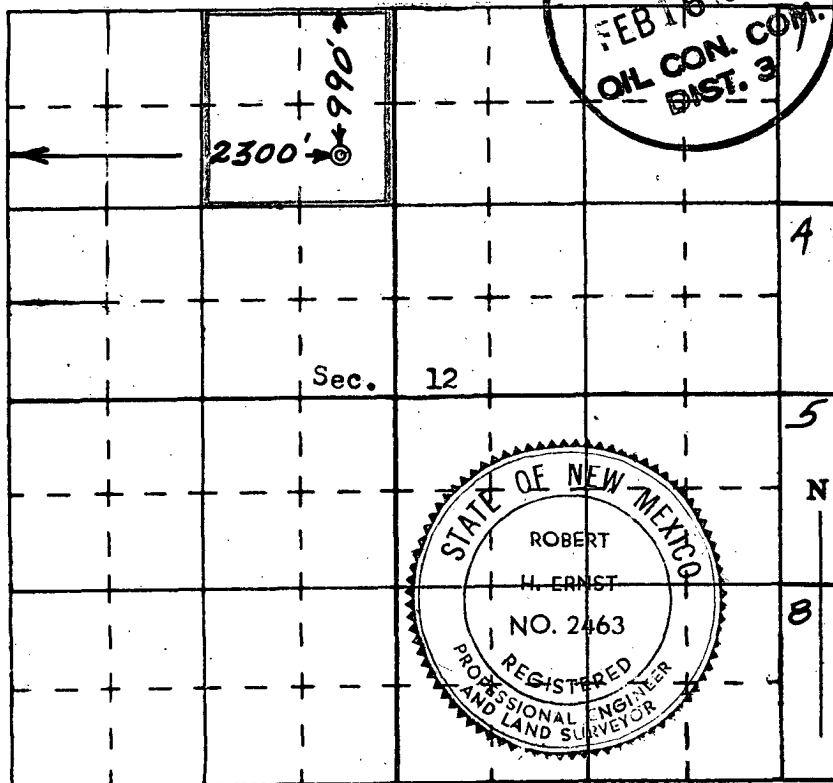
Date Surveyed

Robert H. Ernst
Registered Professional Engineer
and/or Land Surveyor

Robert H. Ernst

N. Mex. PE & LS 2463

Certificate No.



**ERNST ENGINEERING CO.
DURANGO, COLORADO**