

UNITED STATES
DEPARTMENT OF INTERIOR
BUREAU OF LAND MANAGEMENT

FORM APPROVED
Budget Bureau No 1004-0135
Expires March 31, 1993

SUNDRY NOTICE AND REPORTS ON WELLS

Do not use this form for proposals to drill or to deepen or reentry to a different reservoir. Use "APPLICATION TO DRILL" for permit for such proposals

5. Lease Designation and Serial No
NMSF-078764

6. If Indian, Allottee or Tribe Name

SUBMIT IN TRIPLICATE

RECEIVED

APR 01 2008

Bureau of Land Management

Farmington Field Office

1. Type of Well
Oil Well ☒ Gas Well ☐ Other ☐

2. Name of Operator
WILLIAMS PRODUCTION COMPANY

3. Address and Telephone No
PO Box 640 Aztec, NM 87410-0640

4. Location of Well (Footage, Sec., T., R., M., or Survey Description)
2305' FNL & 2305' FEL Sec 30, T31N, R5W NMPM

7. If Unit or CA, Agreement Designation
Rosa Unit

8. Well Name and No
Rosa Unit #166B

9. API Well No
30-039-29841

10. Field and Pool, or Exploratory Area
BLANCO MV/BASIN MANCOS/BASIN DK

11. County or Parish, State
Rio Arriba, New Mexico

CHECK APPROPRIATE BOX(s) TO INDICATE NATURE OF NOTICE, REPORT, OR OTHER DATA

TYPE OF SUBMISSION

☒ Notice of Intent

☒ Subsequent Report

☐ Final Abandonment

TYPE OF ACTION

Abandonment

Recompletion

Plugging Back

Casing Repair

Altering Casing

☒ Other Multiple zone completion

Change of Plans

New Construction

Non-Routine Fracturing

Water Shut-Off

Conversion to Injection

Dispose Water

(Note Report results of multiple completion on Well Completion or Recompletion Report and Log form)

13. Describe Proposed or Completed Operations (Clearly state all pertinent details, and give pertinent dates, including estimated date of starting any proposed work. If well is directionally drilled, give subsurface locations and measured and true vertical depths for all markers and zones pertinent to this work)*

Williams Production Company, LLC. hereby requests authority to drill this as a Mesa Verde/Mancos/Dakota Triple completion as per attached plat and drilling plan. The plan is for the Mancos and Dakota to be commingled at completion.

CONDITIONS OF APPROVAL

Adhere to previously issued stipulations.

RCVD APR 15 '08

OIL CONS. DIV.

DIST. 3

NMOC D approval is required for the NSL. (Mancos + Dakota formations.)

HOLD C1M FOR NSL order for Mancos.

Notify C1M 24 HRG.

PRIOR TO CASING & CEMENT

14. I hereby certify that the foregoing is true and correct

Signed

Larry Higgins
Larry Higgins

Title Drilling C.O.M.

Date 3-31-08

(This space for Federal or State office use)

Approved by

Wayne Courant

Title

Pet. Eng.

Date

4/14/08

Conditions of approval, if any.

NMOC D



WILLIAMS PRODUCTION COMPANY

DRILLING PLAN

(Note: This procedure will be adjusted on site based upon actual conditions)

DATE: 3/27/2008

WELL NAME: Rosa Unit #166B **FIELD:** Blanco MV/DK/Mancos

SURFACE LOCATION: SW/4 NE/4 Sec. 30- T31N-R5W **SURFACE:** BLM
Rio Arriba, NM

ELEVATION: 6,385ft. (GL) **MINERALS:** BLM

LEASE # SF-078764 **API#:** 30-039-29841

TOTAL DEPTH: 8,239ft. (MD)

I. GEOLOGY: Surface formation - San Jose

A. FORMATION TOPS: (KB)

	<u>MD</u>		<u>MD</u>
20in. Casing	400ft.	Graneros sh	7,789ft.
Ojo Alamo	2,514ft.	Dakota ss	7,919ft.
Kirtland sh	2,644ft.	Morrison fm	8,139ft.
Fruitland cl	3,009ft.		
Pictured Cliffs ss	3,244ft.		
Lewis sh	3,539ft.		
13-3/8in. Casing	3,719ft.		
Cliff House ss trans	5,109ft.		
Cliff House ss	5,419ft.		
Menefee	5,474ft.		
Point Lookout ss	5,644ft.		
9-5/8in. Liner	5,989ft.		
Mancos sh	5,989ft.		
Gallup ss	7,014ft.		
Greenhorn ls	7,734ft.		
		Total Depth (MD)	8,239ft.

B. LOGGING PROGRAM: (PEX-ECS-HNGS) OH log will be run from surface shoe to 17-1/2" TD, and from 9-5/8" shoe to TD; PEX Only from 13-3/8" shoe to 12-1/4" TD; FMI-Sonic Scanner and MSCT over intervals of interest(selected intervals by on-site Geologist). *Subject to change as wellbore conditions dictate.*

C. NATURAL GAUGES: Gauge any noticeable increases in gas flow. Record all gauges in Tour book and on morning reports.

II. DRILLING

- A. **SURFACE HOLE:** PU 12 1/4", 17 1/2" 26" in. Bit, Drill / ream to +400 ft. (MD). Drill with water and Gel sweeps. RU and run 20 in. Surface Casing, set at 400 ft.+ (MD). NU 20in. SOW X 21-1/4 in. 2000 psi Braden Head. NU 20in annular preventer. The surface casing will be pressure tested to 1400 psi in conjunction with the BOP test before drilling out cement. Run TOTCO surveys at 200ft. and 400ft.
- B. **INTERMEDIATE HOLE:** Drill out of 20in. csg. with a 17-1/2in. Tri-cone bit. Use LSND Mud System to 13-3/8 in. intermediate casing point. Increase Viscosity of mud system to 40+ to run casing. Treat for lost circulation as necessary. Obtain 100% returns prior to cementing. Notify Engineering of any mud losses. Circulate cement to surface. NU 21-1/4in 2,000 psi X 13-5/8 in. "B" Section. Run TOTCO Surveys each 500 ft.
- C. **INTERMEDIATE LINER HOLE:** Drill out of 13-3/8in. csg. with a 12-1/4in. air hammer bit. Use Air Drilling System, to 9-5/8 in. intermediate casing point. Run & set 9-5/8" liner. Circulate cement to 100ft. above TOL. Run TOTCO Surveys each 500 ft.
- D. **PRODUCTION HOLE:** Drill out of 9-5/8in. csg with an 7-7/8in tri-cone bit. Use Dispersed Mud System with water loss less than 8 ml/30 min to 6724'. POOH, P/U Coring BHA (7-7/8in. coring head) and 5in. drill pipe. Cut and wireline retrieve 3in. cores over following intervals; 6724'-6994, 7229'-7469', 7659'-7779', 7910'-8150'. POOH, run OH logs. Increase Viscosity of mud system to 40+ to run casing. Treat for lost circulation as necessary. Notify Engineering of any mud losses.
- E. **BOP TESTING:** While drill pipe is in use, the pipe rams and the blind rams will be function tested once each trip. The anticipated reservoir is expected to be less than 1300 psi, so the BOPE will be tested to **250 psi (Low) for 5 minutes and 1500 psi (High) for 10 minutes**. Utilize a BOPE Testing Unit with a recording chart and appropriate test plug for testing. The surface and Intermediate casing will be pressure tested to **1500 psi for 30 minutes** after the BOPE test before drilling out cement. The drum brakes will be inspected and tested each tour. **All tests, inspections and SPR's will be recorded in the tour book as to time and results.**

III. MATERIALS

A. **CASING PROGRAM:**

<u>CASING TYPE</u>	<u>HOLE SIZE</u>	<u>DEPTH</u>	<u>CASING SIZE</u>	<u>WT. & GRADE</u>
Surface	26in.	+/- 400'	20in.	94#/ft X-52
Intermediate	17-1/2in.	+/- 3,719'	13-3/8in.	68#/ft HCL-80
Drilling Liner	12-1/4in.	+/-3,550ft.- 5,989ft.	9-5/8in.	47#/ft P-110
Longstring	8-3/4in.	+/- 8,239ft.	5-1/2in.	17#/ft N-80

B. **FLOAT EQUIPMENT:**

1. **SURFACE CASING:** 20in. notched regular pattern guide shoe. Run one (1) standard centralizer on each of the bottom three (3) joints
2. **INTERMEDIATE CASING:** 13-3/8in. cement nose guide shoe with a self-fill insert float. Place float collar one joint above the shoe. Install one Turbulent centralizer on each of the bottom (3) joints and one standard centralizer every (3) joints to the surface casing.
3. **DRILLING LINER:** 9-5/8in. Whirler type cement nose guide shoe with a latch collar on top of

bottom joint.

Rosa #166B
Drilling Plan
Page #3

4. LONGSTRING CASING: 5-1/2in. cement nose guide shoe with a Float Collar on top of bottom joint.

C. CEMENTING:

(Note: Volumes may be adjusted onsite due to actual conditions)

1. SURFACE: Lead: ~~300 sx~~ ⁵¹⁶ (602 cu.ft.) of class Premium Lite FM, 8% gel+2% CaCl₂+2% Pheno Seal+1/4# cello-flake/sk (Yield = 1.72 cu.ft./sk, Weight = 12.1 #/gal.). Tail: ~~270sx~~ (381 cu.ft.) of class "Type III" with 1/4# cello-flake/sk +2% CaCl₂ (Yield = 1.41 cu.ft./sk, Weight = 14.5#/gal.). ~~126%~~ excess in lead and tail to circulate to surface. Total volume = ~~983~~ ⁸¹⁷ cu.ft. WOC 12 hours. Run a temperature survey after 8 hours if cement is not circulated.
2. INTERMEDIATE: 10 bbl fresh water spacer Lead: ~~2365sx~~ (4921 cu.ft.) of class "Premium Lite FM" with 8% gel and 1/4# cello-flake/sk + 2% phenol seal (Yield = 2.08 cu.ft./sk, Weight = 12.1 #/gal.). Tail: ~~200sx~~ (350 cu.ft.) of class "Type III" with 1/4# cello-flake/sk (Yield = 1.39 cu.ft./sk, Weight = 14.5#/gal.). 100% excess in lead to circulate to surface. Total volume = 5271 cu.ft. WOC 12 hours. Run a temperature survey after 8 hours if cement is not circulated.
3. DRILLING LINER: 10 bbl gelled water +0.25 gal/bbl XLFC-5 spacer and 10 bbl fresh water spacer. 540 sx (1152 cu. Ft.) "Premium Lite HS FM"+1% FL-52+0.2%CD-32+1/4 lb/sk cello-flake (Yield = 2.14 cu ft/sk, weight = 12.3 #/gal). The 50% excess should cover liner top. Total volume 1152 ft³. WOC 12 hours.
4. LONGSTRING: 20 bbl Mud Clean II as spacer Lead: 150 sx (362 cu ft) Premium Lite HS FM +1% FL-52+0.2% CD-32+3 #/skCSE+2% Pheno Seal+1/4 #/skcello-flake (Yield=2.44 #/sx, Weight=11.8 #/gal). Tail: 285 sx (604 cu ft) Premium Lite HS FM+1% FL-52+0.2% CD-32+3 #/skCSE+2% Pheno Seal+1/4 #/sk Cello-flake (Yield=2.14 cu ft/sk, Weight =12.30 #/gal) Displace cement at a minimum of 8 BPM. The 50% excess in slurry to place 100' into liner. Total volume 966 ft³. WOC 12 hours.

Gary C. Sizemore
Sr. Drilling Engineer

District I
1625 N. French Dr., Hobbs, NM 88240

District II
1301 W. Grand Avenue, Artesia, NM 88210

District III
1000 Rio Brazos Rd., Aztec, NM 87410

District IV
1220 S. St. Francis Dr., Santa Fe, NM 87505

State of New Mexico
Energy, Minerals & Natural Resources Department

OIL CONSERVATION DIVISION
1220 South St. Francis Dr.
Santa Fe, NM 87505

Form C-102
Revised October 12, 2005
Instructions on back
Submit to Appropriate District Office
State Lease - 4 Copies
Fee Lease - 3 Copies

☐ AMENDED REPORT

RCVD APR 21 '08

OIL CONS. DIV.

WELL LOCATION AND ACREAGE DEDICATION PLAT

DIST. 3

*API Number	*Pool Code	*Pool Name
	97232 / 72319 / 71599	BASIN MANCOS / BLANCO MESAVERDE / BASIN DAKOTA
*Property Code	*Property Name	*Well Number
17033	ROSA UNIT	166B
*GRID No.	*Operator Name	*Elevation
120782	WILLIAMS PRODUCTION COMPANY	6385'

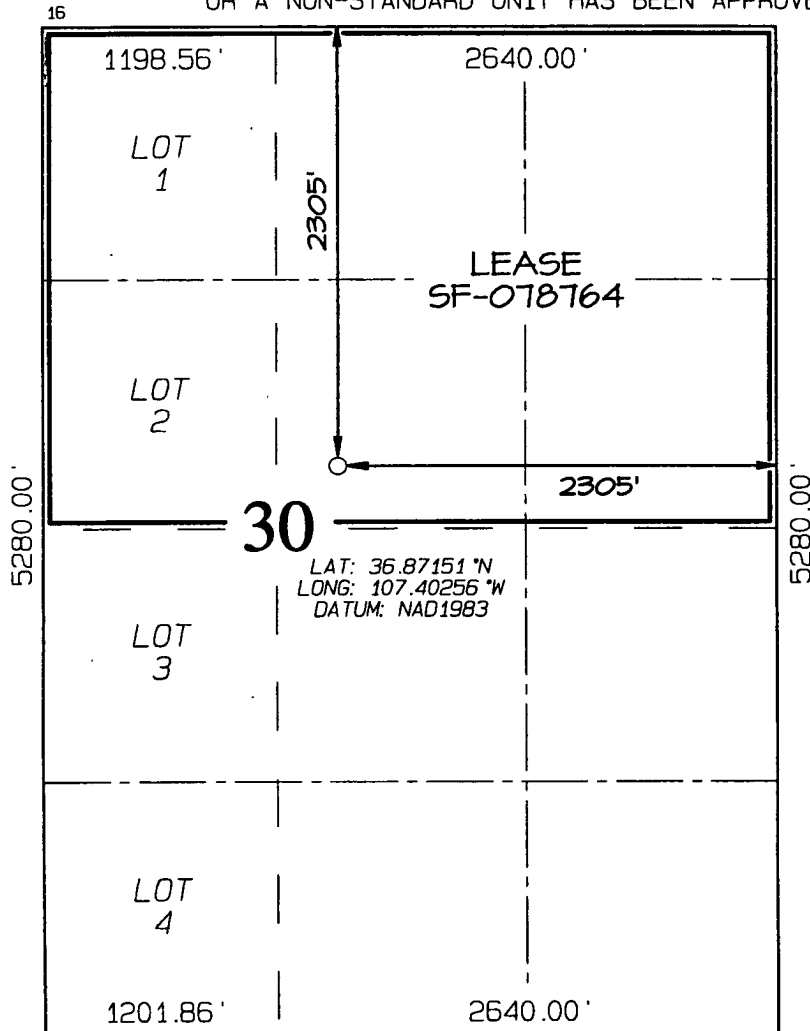
¹⁰ Surface Location

UL or lot no.	Section	Township	Range	Lot Idn	Feet from the	North/South line	Feet from the	East/West line	County
G	30	31N	5W		2305	NORTH	2305	EAST	RIO ARriba

¹¹ Bottom Hole Location If Different From Surface

UL or lot no.	Section	Township	Range	Lot Idn	Feet from the	North/South line	Feet from the	East/West line	County
¹² Dedicated Acres					¹³ Joint or Infill	¹⁴ Consolidation Code	¹⁵ Order No.		
232.69 Acres - (N/2)							NSL 5681 - M/OK + nsp R- 2046B Tract 8		

NO ALLOWABLE WILL BE ASSIGNED TO THIS COMPLETION UNTIL ALL INTERESTS HAVE BEEN CONSOLIDATED OR A NON-STANDARD UNIT HAS BEEN APPROVED BY THE DIVISION



¹⁷ OPERATOR CERTIFICATION

I hereby certify that the information contained herein is true and complete to the best of my knowledge and belief, and that this organization either owns a working interest or unleased mineral interest in the land including the proposed bottom-hole location or has a right to drill this well at this location pursuant to a contract with an owner of such a mineral or working interest, or to a voluntary pooling agreement or a compulsory pooling order heretofore entered by the division.

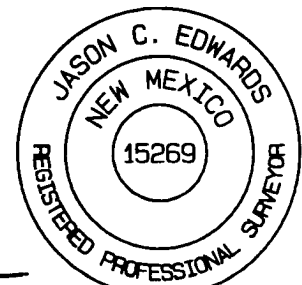
Larry Higgins 4-21-08
Signature Date
LARRY HIGGINS
Printed Name

¹⁸ SURVEYOR CERTIFICATION

I hereby certify that the well location shown on this plat was plotted from field notes of actual surveys made by me or under my supervision, and that the same is true and correct to the best of my belief.

Date Revised: MARCH 10, 2008
Survey Date: OCTOBER 4, 2005

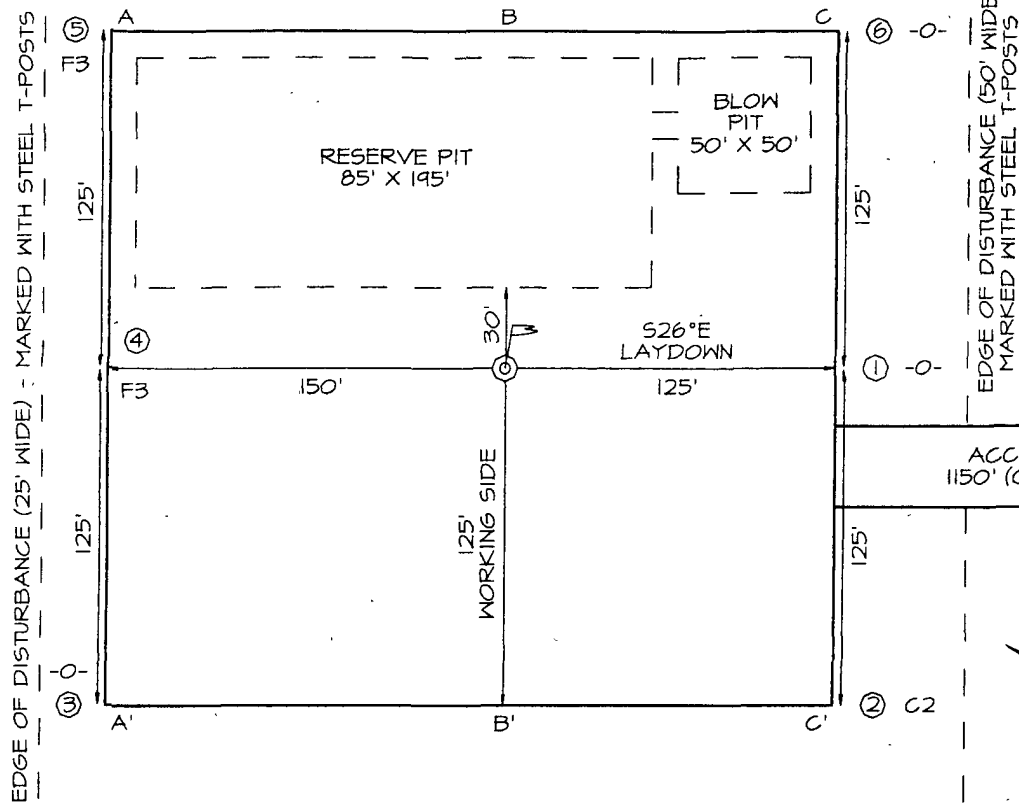
Signature and Seal of Professional Surveyor



JASON C. EDWARDS
Certificate Number 15269

WILLIAMS PRODUCTION COMPANY ROSA UNIT #166B
2305' FNL & 2305' FEL, SECTION 30, T31N, R5W, NMPM
RIO ARriba COUNTY, NEW MEXICO ELEVATION: 6384'

EDGE OF DISTURBANCE (25' WIDE) - MARKED WITH STEEL T-POSTS



LATITUDE: 36°52'17"
LONGITUDE: 107°24'07"
 DATUM: NAD1927

EDGE OF DISTURBANCE (50' WIDE) - MARKED WITH STEEL T-POSTS

