

Submit 3 Copies  
To Appropriate  
District Office  
**DISTRICT I**  
P.O. Box 1980, Hobbs, NM 88240

State of New Mexico  
Energy, Minerals and Natural Resources Department

Form C-103  
Revised 1-1-89

**OIL CONSERVATION DIVISION**

2040 South Pacheco  
Santa Fe, NM 87505

**DISTRICT II**  
811 South First, Artesia NM 88210

**DISTRICT III**  
1000 Rio Brazos Rd., Aztec, NM 87410

WELL API NO. 30-045-11487
5. Indicate Type of Lease STATE <input type="checkbox"/> FEE <input checked="" type="checkbox"/>
6. State Oil & Gas Lease No. E-504
7. Lease Name or Unit Agreement Name: <b>RCUD MAY 2 '08</b> <b>MADDOX</b> <b>OIL CONS. DIV.</b> <b>DIST. 3</b>
8. Well No. #1
9. Pool name or Wildcat BLANCO MV

<b>SUNDRY NOTICES AND REPORTS ON WELLS</b> (DO NOT USE THIS FORM FOR PROPOSALS TO DRILL OR TO DEEPEN OR PLUG BACK TO A DIFFERENT RESERVOIR. USE "APPLICATION FOR PERMIT" (FORM C-101) FOR SUCH PROPOSALS)	
1. Type of Well: Oil Well <input type="checkbox"/> Gas Well <input checked="" type="checkbox"/> Other	
2. Name of Operator WILLIAMS PRODUCTION COMPANY	
3. Address of Operator P O BOX 3102, MS 25-4, TULSA, OK 74101	
4. Well Location (Surface) Unit letter <u>N</u> : <u>955</u> feet from the <u>SOUTH</u> line & <u>1630</u> feet from the <u>WEST</u> line Sec 10-32N-R11W SAN JUAN, NM	
10. Elevation (Show whether DF, RKB, RT, GR, etc. 6423' GL	

Check Appropriate Box to Indicate Nature of Notice, Report or Other Data

**NOTICE OF INTENTION TO:**

**SUBSEQUENT REPORT OF:**

PERFORM REMEDIAL WORK	PLUG AND ABANDON	REMEDIAL WORK	ALTERING CASING
TEMPORARILY ABANDON	CHANGE PLANS	COMMENCE DRILLING OPNS.	PLUG AND ABANDONMENT
PULL OR ALTER CASING		CASING TEST AND CEMENT JOB	
OTHER:		X OTHER: <u>TBG Repair / Fill C/O</u>	

12. Describe proposed or completed operations. (Clearly state all pertinent details, and give pertinent dates, including estimated date of starting any proposed work). Data below to satisfy NM OCD Rule 303.C.3 (b) (i)-(vii)

04-01-2008

MIRU, spot FB tank & frac tank, NU w/ same. Filled frac tank w/ 2% kcl. Csg & tbg = 100 psi, bled to FB tank & killed w/ kcl. ND w/ xmas tree, one lockdown pin gaulded in WH, Antelope broke off lockdown pin on outside of WH, ground off lockdown pin inside WH to free up tbg hanger. NU w/ BOP & working platform. TOH w/ 2 3/8" prod string tbg, tbg parted 17 jts down = 532', parted 1' below collar, ordered out fishing equip. MU four 11/16" overshot, would not go in csg, indicating csg to be 5". MU 3 7/8" overshot w/ 2 3/8" basket grapple & TIH w/ same on 2 3/8" work string tbg. Engaged fish top @ 586', pulled 10,000# over WS wt, fish parted. TOH w/ fish assy & WS tbg, rec 2 jts = 63', TIH w/ fish assy engaged fish & MSFN.

Continued on attached sheets:

I hereby certify that the information above is true and complete to the best of my knowledge and belief.

SIGNATURE Rachel Lipperd TITLE: Engineering Technician DATE: April 30, 2008

Type or print name Rachel Lipperd Telephone No: (918) 573-3046

(This space for State use) APPROVED

BY A. Villanueva TITLE Deputy Oil & Gas Inspector, DATE 5/16/08  
Conditions of approval, if any: District #3

04-02-2008

Csg = 200#, bled to FB tank & kill w/ 2% kcl. MIRU w/ WL Spec equip. MU & TIH w/ 17/16" free point tools, working free point & pipe @ 30,000#, pipe started moving up hole. TOH w/ WL Spec tools, RD w/ WL Spec equip. TOH w/ WS tbg & fish assy, slowly recovering to date 171 jts plus 12' = 5387' prod string tbg, recovered tbg eaten up inside w/ corrosion. Fishing neck flared out, unable to get a concave mill to dress top of fish until morning. TIH w/ 2 3/8" work string tbg, PU in sgls & std back in derrick. Mill arrived, MU 4 1/4" concave mill, 3 1/8" jars, 4 x 3 1/8" DC's, TIH w/ assy on 2 3/8" WS tbg, mill stopped solid @ 360', stuck mill, worked mill free, TOH w/ tbg & mill assy, mill indicated tight pipe, MSFN.

04-03-2008

Csg = 200#, bled to FB tank & kill w/ kcl. MU 4" concave mill, 3 1/8" jars, 4 x 3 1/8" DC's. TIH w/ mill assy on 2 3/8" WS tbg, PU tbg in sgls, meas & rabbited same. Tag up solid @ 5420'. Sgld out w/ drl line to 4 line string up. NU w/ PS & air pack, break circ w/ 10 bph air/soap/corr inhib in 30 min @ 925#. Displace 20 bbls pure condensate. Circ sand fill from 5420' to fish top @ 5428'. Milled from 5428' to 5431', rec metal cuttings & med frac sand. Circ clean & made soap sweeps. ND w/ air pack & PS. Doubled up w/ drl line to 2 line string up. TOH w/ tbg & mill assy, mill indicated good fish neck looking up. MU w/ 3 1/8" overshot w/ 2 3/8" bskt grapple, 3 1/8" bumper sub, 3 1/8" jars, accelerator, and 4 x 3 1/8" DC's. TIH w/ fishing assy on 2 3/8" WS tbg. Hung off above all perfs @ 4950' & MSFN.

04-04-2008

Csg = 200#, bled to FB tank & kill w/ kcl. TIH w/ 2 3/8" WS tbg & fish assy. Tag top of sand fill @ 5423'. Sgl out w/ drl line to 4 line string up. NU w/ PS & air pack. Break circ w/ 12 bph air/soap/corrosion inhibitor in 35 min @ 925#. Displace 20 bbls condensate w/ air. Circ sand fill from 5423' to top of fish @ 5431', well making sand, circ clean & made soap sweeps. Engaged fish top @ 5431'. Jarred on fish @ 22,000# above WS tbg wt, jarred free. Circ clean & made soap sweeps. ND w/ PS & air pack. Dbl line to 2 line string up. TOH w/ WS tbg & fish assy, no fish recovery, tang stripped dull. Ordered out spring dog catch. MU 4" WO shoe, 2 jts 3 3/4" WO pipe, jars, 4 x 3 1/8" DC's & TIH w/ same to 200' below tight spot in csg, no obstruction noted. TOH w/ wash over assy, MU w/ wash over assy w/ spring latch & TIH w/ same on 2 3/8" WS tbg. Hit an obstruction @ 4950', TUH & hung off tbg @ 4300' & MSFN.

04-07-2008

200# csg, bled to FB tank & kill w/ kcl. TDH w/ wash over assy to tight spot @ 4678'. Sgl out w/ drl line to 4 line string up, NU w/ air pack & PS. Circ & rotate milling from 4678' to 4692' = 14', rec metal shavings & rubber w/ very little scale. Tight pulling 10,000# over to pull free. Circ clean w/ soap sweeps. ND w/ air pack & PS, double up w/ drl line to 2 line string up. TOH w/ wash over assy, sgl down w/ wash over pipe. MU w/ 3 7/8" overshot w/ 2 3/8" bskt grapple w/ 9' extension, 3 1/8" bump sub, 3 1/8" jars, 4 x 3 1/8" DC's & accelerator. TIH w/ fish assy on WS tbg. Tag fish top @ 5431'. Sgl out drl line to 4 line string up, NU w/ PS & air pack. Break cir w/ 12 bph air/soap/corr inhib. Fish started moving up hole. ND w/ PS & air pack. Double up drl line to 2 line string up. TOH w/ tbg & fishing assy. Rec 18' piece, 2 jts & seat nipple, all fish rec, MSFN.

04-08-2008

250# csg = 50# increase, bled to FB tank, kill w/ kcl. MU 4 1/4" string mill, 3 1/8" jars, 4 x 3 1/8" DC's & TIH w/ same on WS tbg, stopped solid @ 4678'. Sgl out drl line to 4 lines. NU w/ PS & air pack. Break circ w/ 10 bph air/soap/corr inhib in 10 min @ 450#. Circ & rotate, mill @ 4678' for 15 min, rec 2 gal frac sand in 5 gal bkt test w/ rubber cuttings. Circ clean w/ soap sweeps. ND w/ PS & air pack, double drl line to 2 lines. TOH w/ SM assy. MU w/ 4" junk mill, 3 1/8" jars, 4 x 3 1/8" DC's & TIH w/ same on WS tbg. Tag fill @ 5465'. Sgl drl line to 4 lines, NU w/ PS & air pack. Break circ w/ 10 bph air/soap/corr inhib in 15 min @ 450#. Circ sand fill from 5465' to 5548' = 30' below perfs, rec hvy sand (coming in) 2 gal in 5 gal bkt test. Rec rubber chunks, possibly from drillable bridge plug. Made soap sweeps, ND w/ PS & air pack, double up drl line to 2 line string up. TUH above tight spot & hung off @ 4600' & MSFN.

04-09-2008

250# on csg, bled to FB tank & killed w/ kcl. TDH w/ junk mill assy & tag top of sand fill @ 5523' = 25' sand entry overnight. NU w/ air pack & broke circ w/ 10 bph air/soap/corr inhib in 25 min @ 650 #. Rec hvy sand w/ nickel size pieces of white shale & quarter size pieces of rubber (believe they are from a DBP & we are on top of bridge plug remnants). Circ clean, rec 1 TBSP sand in 5 gal bkt test. Pumping 10 bph kcl & rec 10 bph form wtr, well not making wtr. Circ clean & made soap sweeps. ND w/ air pack, TUH w/ mill assy & hung off in tight spot @ 4678'. NU w/ air pack, break circ w/ 10 bph air/soap/corr inhib. Circ & rec resin coated sand, 3 TBSP per 5 gal bkt test. Circ clean & made soap sweeps. ND w/ PS & air pack, double up w/ drl line to 2 lines. TOH w/ mill assy & tbg, LD DC's in sgls, loaded out w/ fishing tools & MSFN.

04-10-2008

Csg = 250#, bled to FB tank & killed w/ 2% kcl. MU 5" x 10K tension packer, TIH & set packer @ 500'. Filled csg w/ kcl, ND w/ damaged csg valves & NU w/ new 2" csg valves. Tested Braden head for communications, Braden head between 10 3/4" surface pipe & 7" intermediate, tested well. Braden head between 5" csg & 7" intermediate had 150 psi. Bled down to 0 psi, unable to press test seal. Rigged out w/ Antelope equip, TIH w/ 2 3/8" WS tbg, TOH w/ 2 3/8" WS tbg, LD in sgls & MSFN.

04-11-2008

250# csg, bled to FB tank & kill w/ kcl. Loaded up & move out w/ 2 3/8" WS tbg. MI & spot 2 3/8" prod tbg. MU 2' pup jt, 1.875" X -nipple w/ pump out chk, 16 jts 2 3/8" tbg w/ turned down collars & TIH w/ same on new 2 3/8" prod string tbg, PU up in sgls, measured & rabbited same. Landed w/ X-nipple @ 5476' & overall @ 5478'. Tagged for fill @ 5563' = pbtd, no fill entry. ND w/ work platform & BOP. NU w/ xmas tree & air pack, pump ahead w/ 3 bbls kcl & pump off check @ 575#. Mix 20 gals BJ Technoclean w/ 10 bbls kcl & pumped around, circ w/ air & rec load wtr. ND w/ air pack, load out w/ PS & rig tools. LD rig mast & cleaned location. Well ready for production. Prepare to move to the NWCH 32-10 #21 on Monday morning.

# MADDOX #1 BLANCO MESAVERDE

## Location:

955' FSL and 1630' FWL  
SE/4 SW/4 Sec 10(N), T32N, R11W  
San Juan, New Mexico  
Elevation: 6423' GL  
API # 30-045-11487

Spud Date: 11/10/55

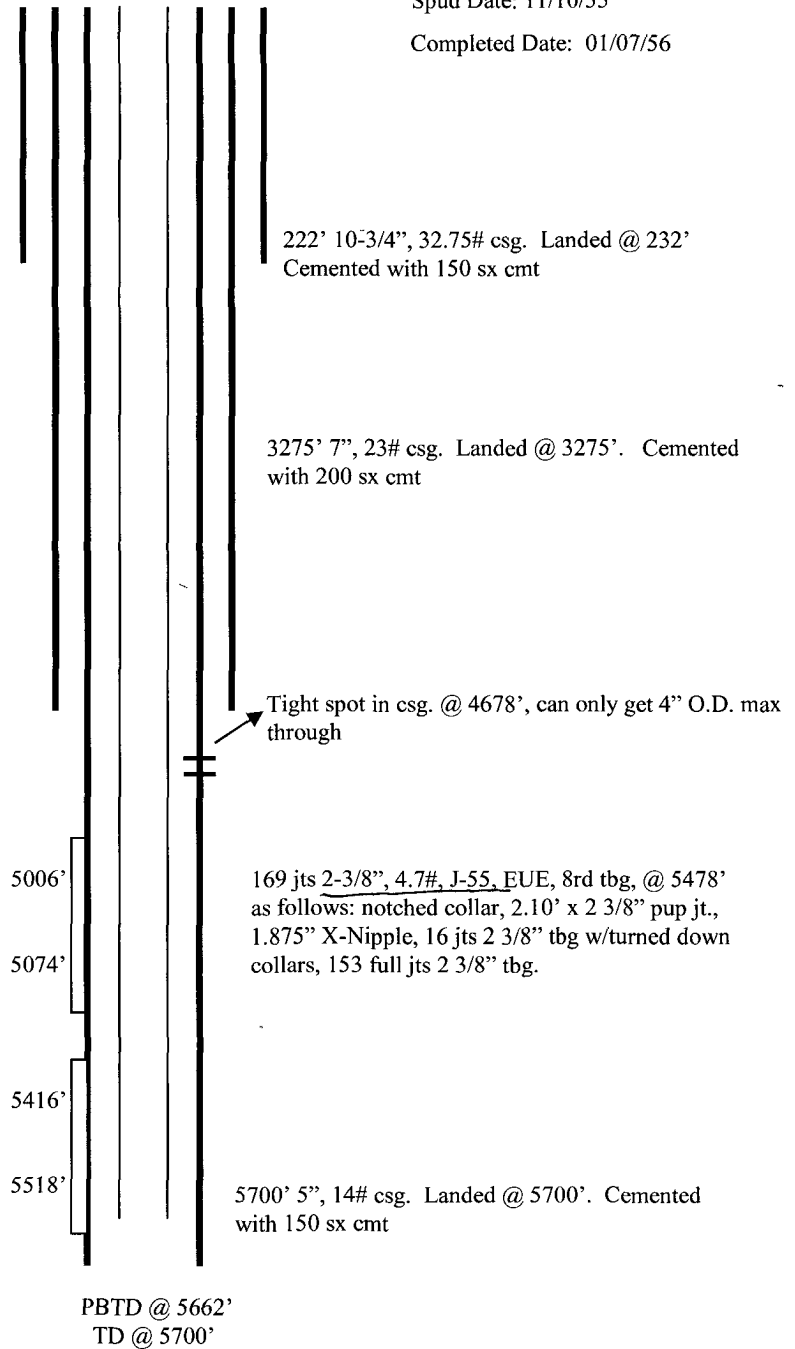
Completed Date: 01/07/56

Top	Depth
Pictured Cliffs	2830'
Mesa Verde	4812'
Menefee	5220'
Point Lookout	5502'

## Stimulation:

Perf'd 2 zones: 5006'-5074' and  
5416'-5518'

Fraced each zone w/ 51,100 gal  
water and 60,000# sand



Casing	Cement	
10-3/4", 32.75#	150 sx	
7", 23#	200 sx	
5", 14#	150 sx	