

RECEIVED

submitted in lieu of Form 3160-5

UNITED STATES
DEPARTMENT OF THE INTERIOR
BUREAU OF LAND MANAGEMENT
Sundry Notices and Reports on Wells

JUN 03 2008

Bureau of Land Management
Farmington Field Office

1. Type of Well Oil

5. Lease Number
NM-014024 19925

6. If Indian, All. or
Tribe Name

2. Name of Operator
Questar Exploration & Production Company

7. Unit Agreement Name
Federal 1-22

3. Address & Phone No. of Operator
1050 17th Street, Suite 500, Denver, CO 80265

8. Well Name & Number
#1

9. API Well No.
30-039-05349

Location of Well, Footage, Sec., T, R, M

10. Field and Pool
Escrito Gallup

660' FSL and 1980' FWL, Section 22, T-24-N, R-7-W, Unit N

11. County & State
Rio Arriba County, NM

12. CHECK APPROPRIATE BOX TO INDICATE NATURE OF NOTICE, REPORT, OTHER DATA

Type of Submission

☒ Notice of Intent

☐ Subsequent Report

☐ Final Abandonment

Type of Action

☒ Abandonment

☐ Recompletion

☐ Plugging Back

☐ Casing Repair

☐ Altering Casing

☐ Other -

☐ Change of Plans

☐ New Construction

☐ Non-Routine Fracturing

☐ Water Shut off

☐ Conversion to Injection

13. Describe Proposed or Completed Operations

Questar Exploration & Production Company proposes to plug and abandon this well
per the attached procedure.

PIT, CLOSED LOOP SYSTEM, BELOW
GRADE TANK, PROPOSED
ALTERNATIVE METHOD OR CLOSURE
PLAN TO BE DESIGNED, CONSTRUCTED
& OPERATED PURSUANT TO NMOCD
RULE 19.15.17 EFFECTIVE 06/16/08

RCVD JUN 6 '08
OIL CONS. DIV.
DIST. 3

14. I hereby certify that the foregoing is true and correct.

Signed Kirby Sanchez Title Production Foreman Date 6/02/08

(This space for Federal State Office use)
APPROVED BY Original Signed: Stephen Mason Title Production Foreman
CONDITION OF APPROVAL, if any:

Date JUN 04 2008

Title 18 U.S.C. Section 1001, makes it a crime for any person knowingly to make to any department or agency of the
United States any false, fictitious or fraudulent statements or representations as to any matter within its jurisdiction.

NMOCD

PLUG AND ABANDONMENT PROCEDURE

June 2, 2008

Federal 1-22 #1

Escrito Gallup
660' FSL & 1980' FWL, SW, Section 22, T24N, R7W
Rio Arriba County, New Mexico, API #30-039-05349

Note: All cement volumes use 100% excess outside pipe and 50' excess inside pipe. The stabilizing wellbore fluid will be 8.3 ppg, sufficient to balance all exposed formation pressures. All cement will be Class G, mixed at 15.8 ppg with a 1.15 cf/sx yield.

1. Project will require a Pit Permit (C103) from the NMOCD.
2. Install and test location rig anchors. Prepare and line a waste fluid pit. Comply with all NMOCD, BLM, and Operator safety regulations. MOL and RU daylight pulling unit. Conduct safety meeting for all personnel on location. Record casing, tubing and bradenhead pressures. NU relief line and blow down well. Kill well with water as necessary and at least pump tubing capacity of water down the tubing. ND wellhead and NU BOP. Function test BOP.
3. Rods: Yes ☐, No ☒ X, Unknown ☐
Tubing: Yes ☐, No ☒ X, Unknown ☐, Size 2?, Length 5609'
Packer: Yes ☐, No ☒ X, Unknown ☐, Type
If well has rods or a packer, then modify the work sequence in Step #2 as appropriate.

4. **Plug #1 (Gallup perforations and top, 5510' - 5326')**: TIH and set 5.5" cement retainer at 5510'. Pressure test tubing to 1000#. Load casing with water and circulate well clean. Pressure test casing to 800#. *If casing does not test, then spot or tag subsequent plugs as appropriate.* Mix ~~28~~ ²⁸ sxs cement and spot a balanced plug inside casing above CR to isolate the Gallup perforations and top. PUH to 4379'.
2895 2795
5. **Plug #2 (Mesaverde top, 4379' - 4279')**: Mix ~~18~~ ¹⁸ sxs cement and ~~spot a balanced plug inside casing~~ ^{inside outside} to cover the Mesaverde top. TOH. (note: if the casing leaks, then increase the cement to 25 sxs.)
6. **Plug #3 (Pictured Cliffs and Fruitland top, 2080' - 1765')**: Perforate 3 squeeze holes at 2080'. Attempt to establish rate into squeeze holes if the casing tested. Set 5.5" cement retainer at 2030'. Establish rate into squeeze holes. Mix and pump ~~138~~ ⁴⁸ sxs cement, squeeze ~~95~~ ⁹⁵ sxs outside the casing and leave ~~48~~ ⁴⁸ sxs inside casing to cover through the Fruitland top. TOH.
1601 1327
7. **Plug #4 (Kirtland and Ojo Alamo tops, 1515' - 1255')**: Perforate 3 squeeze holes at ~~1515'~~ ¹⁶⁰¹. Attempt to establish rate into squeeze holes if the casing tested. Set 5.5" cement retainer at ~~1465'~~ ¹³²⁷. Establish rate into squeeze holes. Mix and pump ~~118~~ ¹⁶⁰¹ sxs cement, squeeze ~~78~~ ⁷⁸ sxs outside the casing and leave ~~37~~ ³⁷ sxs inside casing to cover through the Ojo Alamo top. TOH and LD tubing.
8. **Plug #5 (9.625" Surface casing shoe, 301' - 0')**: Perforate 3 squeeze holes at 301'. Establish circulation out the bradenhead valve with water; circulate the BH annulus clean. Mix and pump approximately 110 sxs cement down the 5.5" casing to circulate good cement out bradenhead valve. Shut well in and WOC.
9. ND BOP and cut off casing below surface casing flange. Install P&A marker with cement to comply with regulations. RD, move off location, cut off anchors and restore location.

Federal 1-22 #1

Current

Escrito Gallup

660' FSL & 1980' FWL, Section 22, T-24-N, R-7-W
Rio Arriba County, NM / API #30-039-05349

Today's Date: 6/2/08

Spud: 4/25/58

Comp. 6/2/58

Elevation: 6778' GL
6789' KB

12.25" Hole

9.625" 36# Casing set @ 251'
150 sxs cement, circulated to surface

Ojo Alamo @ 1305' *est

Kirtland @ 1465' *est

Fruitland @ 1815' *est

Pictured Cliffs @ 2030'

Mesaverde @ 4329'

Gallup @ 5376'

Tubing set at unknown depth
(original tubing was 2" at 5609')

Holes in casing 4382' - 4412'
squeeze with total 500 sxs Type H
cement (1984).

Top of Cmt @ 4629' (Calc, 75%)

Note: May or may not have a CIBP
at 5485'. Records do not indicate
one in hole.

Gallup Perforations:
5560' - 5590'

5.5" 15.5#, J-55 Casing @ 5651'
Cemented with 200 sxs (236 cf)

7.875" Hole

TD 5651'
PBD 5609'

Federal 1-22 #1

Proposed P&A

Escrito Gallup

660' FSL & 1980' FWL, Section 22, T-24-N, R-7-W
Rio Arriba County, NM / API #30-039-05349

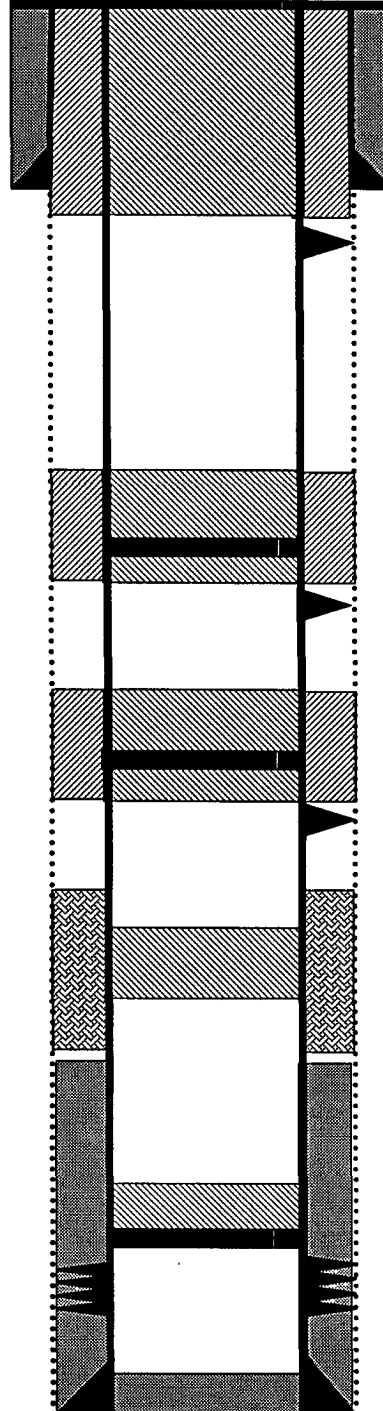
Today's Date: 6/2/08

Spud: 4/25/58

Comp: 6/2/58

Elevation: 6778' GL
6789' KB

12.25" Hole



9.625" 36# Casing set @ 251'
150 sxs cement, circulated to surface

Perforate @ 301'

Plug #5: 301' - 0':
Class G cement, 110 sxs

Ojo Alamo @ 1305' *est

Kirtland @ 1465' *est

Cement Retainer @ 1465'

Perforate @ 1515'

Plug #4: 1515' - 1255':
Class G cement, 116 sxs:
37 inside and 79 outside

Fruitland @ 1815' *est

Pictured Cliffs @ 2030'

Cement Retainer @ 2030'

Perforate @ 2080'

Plug #3: 2080' - 1765':
Class G cement, 138 sxs:
43 inside and 95 outside

Mesaverde @ 4329'

Holes in casing 4382' - 4412'
squeeze with total 500 sxs Type H
cement (1984).

Top of Cmt @ 4629' (Calc, 75%)

Gallup @ 5376'

Note: May or may not have a CIBP
at 5485'. Records do not indicate
one in hole.

Set CR @ 5510'

Plug #1: 5510' - 5326':
Class G cement, 28 sxs

Gallup Perforations:
5560' - 5590'

7.875" Hole

5.5" 15.5#, J-55 Casing @ 5651'
Cemented with 200 sxs (236 cf)

TD 5651'
PBD 5609'

**UNITED STATES DEPARTMENT OF THE INTERIOR
BUREAU OF LAND MANAGEMENT
FARMINGTON DISTRICT OFFICE
1235 LA PLATA HIGHWAY
FARMINGTON, NEW MEXICO 87401**

Attachment to notice of
Intention to Abandon:

Re: Permanent Abandonment
Well: 1 Federal 1-22

CONDITIONS OF APPROVAL

1. Plugging operations authorized are subject to the attached "General Requirements for Permanent Abandonment of Wells on Federal and Indian Lease."
2. Farmington Office is to be notified at least 24 hours before the plugging operations commence (505) 599-8907.
3. The following modifications to your plugging program are to be made:
 - a) Bring the top of the Gallup plug to 5300'.
 - b) Place the Mesaverde plug from 2898' – 2798' inside and outside the 5 ½" casing.
 - c) Place the Pictured Cliffs/Fruitland plug from 2080' - 1748' inside and outside the 5 ½" casing.
 - d) Place the Kirtland/Ojo Alamo plug from 1601' – 1327' inside and outside the 5 ½" casing.

You are also required to place cement excesses per 4.2 and 4.4 of the attached General Requirements.

Office Hours: 7:45 a.m. to 4:30 p.m.